

DESCRIPTION:

- Sensible cooling coil on the induced air inlet handles zone sensible load. Opposite side to controls location. Aluminum ripple fins (10 FPI) and 1/2" (13) copper tubes. Hand of coil connection is determined looking in direction of airflow (RH shown).
- 20 ga. (1.0) galvanized steel construction.
- 16 ga. (1.6) galvanized steel inclined opposed blade damper. 45° rotation. CW to close. Size 30 only.
- Ultra-high efficiency ECM fan motor. EPIC fan volume controller.
- 1/2" (13) dual density fiberglass installation, exposed edge coated to prevent air erosion. Meets requirements of NFPA 90A and UL 181.
- Access panels top and bottom.
- Multi-point averaging diamond flow sensor.
- Discharge opening for flanged duct connection.
- Single point electrical connection.
- Low voltage enclosure for factory mounted DDC controls.
- Controls mounted as standard on RH side as shown. Unit size 30 ordered with LH controls (optional) is inverted and discharge duct hanging elevation will therefore change.
- Galvanized steel drip pan integral to sensible coil.

OPTIONS:

CW COIL:

- ☐ 2-Row ☐ 4-Row ☐ 6-Row
☐ Left Hand coil connections.
☐ Condensate Sensor.

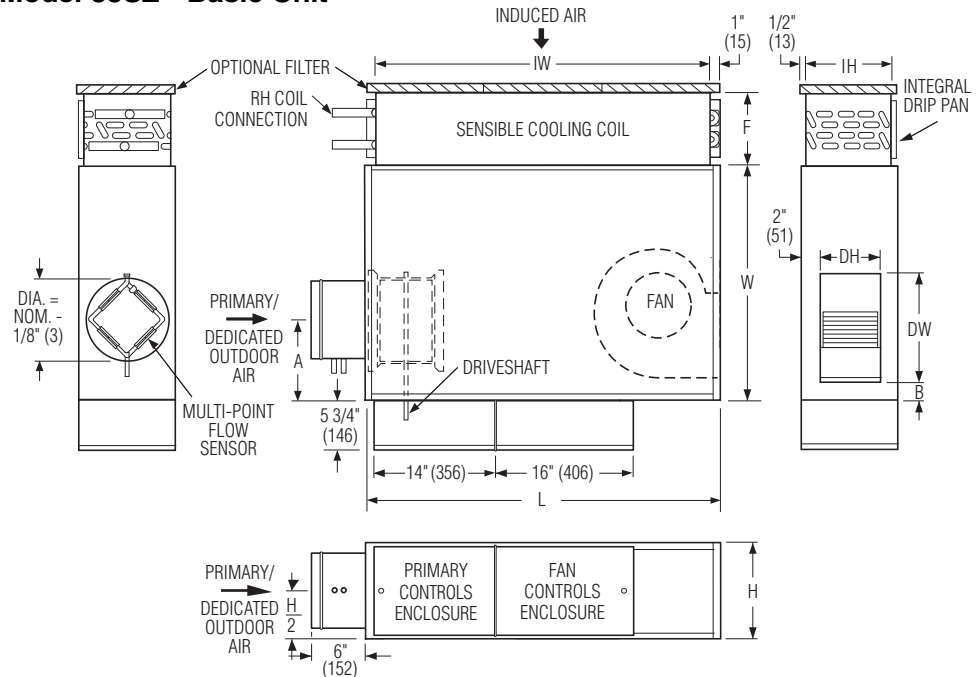
LINER:

- ☐ Fiber-free liner.
☐ Perforated metal liner.
☐ Solid metal liner.
☐ Steri-liner.
☐ Steri-liner w/perforated liner.

FILTERS:

- ☐ 1" (25) Throwaway.
☐ 2" (51) Pleated MERV 8.
☐ 2" (51) Pleated MERV 13.
☐ Ducted Return Filter Rack (See submittal 33SZ-FR).

Model 33SZ • Basic Unit



Dimensional Data

Unit Size	Inlet Size	W	H	L	A	B	Cooling Coil IW x IH	F	Outlet Discharge DW x DH	Filter Size
30	5, 6, 8 (127, 152, 203)	26 1/2 (673)	11 (279)	40 1/4 (1022)	7 (178)	2 (51)	36 X 8 3/4 (914 X 222)	2 Row: 5 1/8 (130) 4 Row: 7 5/16 (186) 6 Row: 9 1/2 (241)	12 3/8 X 6 7/8 (314 X 175)	38 X 10 (965 X 254)

Electrical Motor Data

Unit Size	Motor H. P.	ECM FLA			
		120/1/60	208/1/60	240/1/60	277/1/60
30	*	7.5	5.0	5.0	4.9

* The ECM is a variable horsepower motor.
Refer to Selectworks Schedule.
FLA = Full load amperage

ELECTRICAL:

- ☐ LH Controls enclosure
☐ Toggle disconnect switch.
☐ FN2 – 90° line voltage enclosure.
☐ FN3 – Remote line voltage enclosure.
☐ Motor fusing.

OTHERS:

- ☐ Hanger brackets.

CW Coil O.D. Sweat Connections

Unit Size	No. of Row
30	2, 4, & 6
30	7/8" (22)



Page 1 of 2.

For heat options; see page 2.
Dimensions are in inches (mm).

SCHEDULE TYPE:	DATE	B SERIES	SUPERSEDES	DRAWING NO.
PROJECT:	8 - 19 - 15	3300	12 - 3 - 14	33SZ-1
ENGINEER:				
CONTRACTOR:				

FAN POWERED CHILLED WATER TERMINAL UNIT CONSTANT VOLUME • SENSIBLE COOLING (DOAS) MODELS: 33SZ AND 33SZW UNIT SIZE 30 (LOW PROFILE)

Hot Water Coil Section Model 33SZW

Standard Features:

- Coil section installed on unit discharge.
- 1/2" (13) copper tubes.
- Aluminum ripple fins (10 FPI).
- Sweat Connections: One row: 1/2" (13) O.D. male solder. Two row: 5/8" (16) O.D. male solder.
- Flanged outlet duct connection.

Coil Rows:

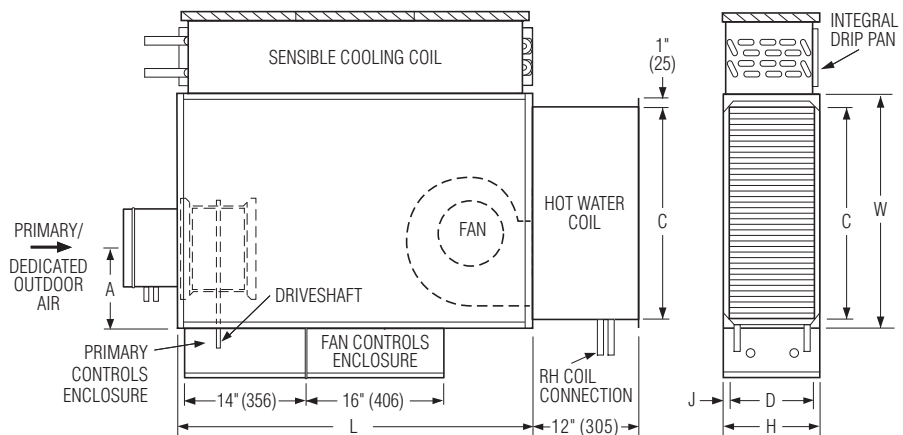
- ☐ 1-Row ☐ 2-Row

Coil Hand Connections:

(Looking in direction of airflow).

- ☐ Right Hand (illustrated). Standard.
☐ Left Hand. Optional.

Heating coil, sensible coil and controls enclosure orientation must all be specified separately.



Unit Size	W	H	L	J	Outlet Duct Size C x D
30	26 1/2 (673)	11 (279)	40 1/4 (1022)	1 (25)	24 X 8 3/4 (610 X 222)

Electric Coil Section Model 33SZE

Standard Features:

- Unique hinged heater design permits easy access, removal and replacement of heater element without disturbing ductwork.
- Coil installed on unit discharge.
- Insulated coil element wrapper.
- Automatic reset high limit cut-outs (one per element).
- Single point electrical connection for entire terminal unit.
- Electronic Fan Interlock Relay.
- Flanged outlet duct connection.
- Controls mounted as standard on RH side as shown. Terminals ordered with L.H. controls (optional) are inverted.

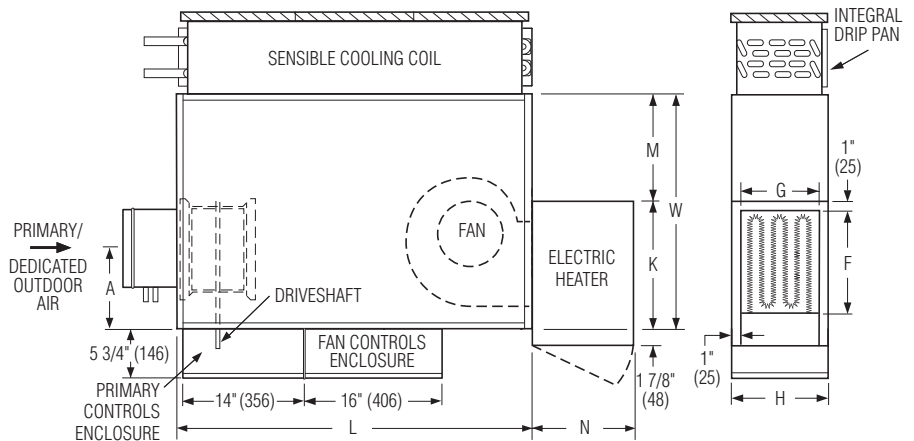
Voltage:

Single phase, 60 Hz.

- ☐ 120V ☐ 208V
☐ 240V ☐ 277V

Three phase, 60 Hz.

- ☐ 208V ☐ 480V (4 wire wye).
☐ 600V (dual point connection).
☐ _____



Unit Size	W	H	L	K	M	N	Outlet Duct Size F x G
30	26 1/2 (673)	11 (280)	40 1/4 (1022)	16 3/4 (416)	10 1/2 (257)	11 1/2 (292)	13 3/4 x 8 (340 x 203)

Electric Coil Options:

- ☐ SCR control (0-10 VDC).
☐ 4-20ma
☐ with discharge temperature control.
☐ Toggle disconnect (includes fan).
☐ Door interlock disconnect switch.
☐ Quiet contactors.
- ☐ Main line fusing.
☐ Class 'A' 80/20 Ni./Ch. wire.
☐ Dust tight construction.
☐ Manual Reset secondary thermal cut out.
☐ Positive Pressure airflow switch.

Page 2 of 2.

Dimensions are in inches (mm).

SCHEDULE TYPE:

PROJECT:

ENGINEER:

CONTRACTOR:

DATE

B SERIES

SUPERSEDES

DRAWING NO

8 - 19 - 15

3300

12 - 3 - 14

33SZ-1

FAN POWERED CHILLED WATER TERMINAL UNIT

CONSTANT VOLUME • SENSIBLE COOLING (DOAS)

MODELS: 33SZ, 33SZE AND 33SZW

UNIT SIZES: 40 AND 50

DESCRIPTION:

- Sensible cooling coil on the induced air inlet handles zone sensible load. Opposite side to controls location. Aluminum ripple fins (10 FPI) and 1/2" (13) copper tubes. Hand of coil connection is determined looking in direction of airflow (RH shown).
- 16 ga. (1.6) galvanized steel channel frame with 20 ga. (1.0) casing components.
- 16 ga. (1.6) galvanized steel inclined opposed blade damper. 45° rotation. CW to close.
- Ultra-high efficiency ECM, fan motor. EPIC fan volume controller.
- 3/4" (19) dual density fiberglass installation, exposed edge coated to prevent air erosion. Meets requirements of NFPA 90A and UL 181.
- Access panels top and bottom.
- Multi-point averaging diamond flow sensor.
- Discharge opening for flanged duct connection.
- Single point electrical connection.
- Low voltage enclosure for factory mounted DDC controls.
- Controls mounted as standard on RH side as shown. Terminals ordered with LH controls (optional) are inverted and discharge duct hanging elevation will therefore change.
- Galvanized steel drip pan integral to sensible coil.
- Filter Frame and 1" (25) disposable filter.

OPTIONS:

CW COIL:

- ☐ 2-Row ☐ 4-Row ☐ 6-Row
- ☐ Left Hand coil connections.
- ☐ Condensate sensor.

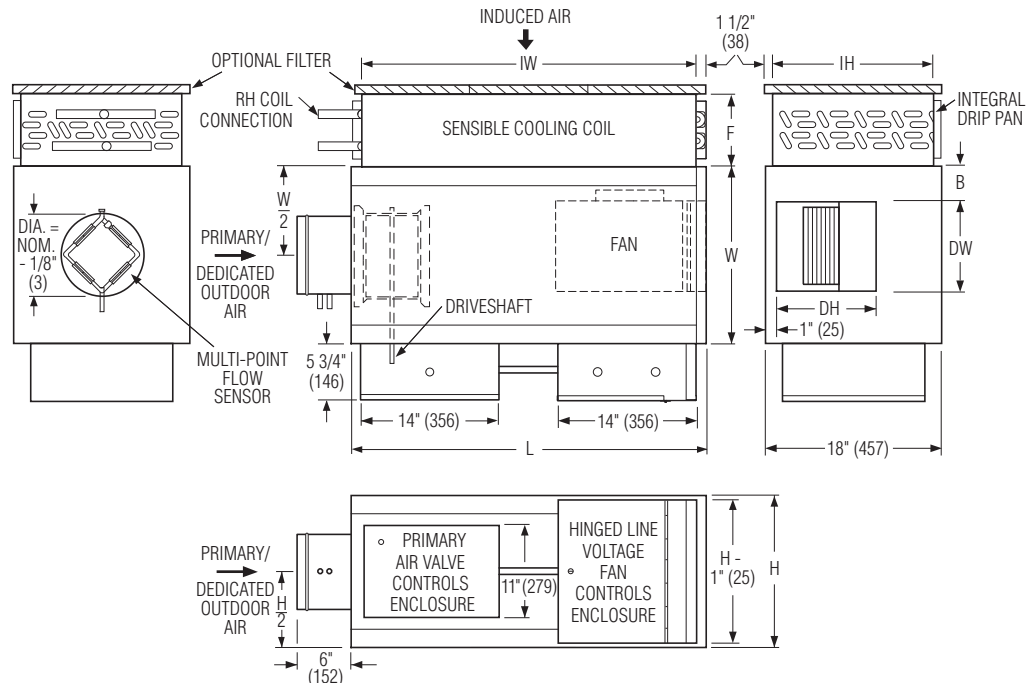
LINER:

- ☐ Fiber-free liner.
- ☐ Perforated metal liner.
- ☐ Solid metal liner.
- ☐ Steri-liner.
- ☐ Steri-liner w/perforated liner.

FILTERS:

- ☐ 1" (25) Throwaway.
- ☐ 2" (51) Pleated MERV 8.
- ☐ 2" (51) Pleated MERV 13.
- ☐ Ducted Return Filter Rack (See submittal 33SZ-FR).

Model 33SZ • Basic Unit



Dimensional Data

Unit Size	Inlet Size	W	H	L	B	Cooling Coil IW x IH	F	Outlet Discharge DW x DH	Filter Size
40	4, 5, 6, 8, 10 (102, 127, 152, 203, 254)	18 (457)	18 (457)	36 (914)	3 1/2 (89)	31 X 15 (787 X 381)	2 Row: 5 1/8 (130) 4 Row: 7 5/16 (186) 6 Row: 9 1/2 (241)	9 1/8 X 10 1/4 (232 X 260)	33 X 16 (838 X 406)
50	5, 6, 8, 10, 12 (127, 152, 203, 254, 305)	26 (660)	18 (457)	41 (1041)	5 (127)	36 x 15 (914 X 381)		13 1/8 X 11 1/4 (232 X 286)	38 X 16 (965 X 406)

Electrical Motor Data

Unit Size	Motor H. P.	ECM FLA			
		120/1/60	208/1/60	240/1/60	277/1/60
40	*	6.5	4.2	4.2	4.2
50	*	9.5	6.4	6.2	6.0

* The ECM is a variable horsepower motor.
Refer to Selectworks Schedule.

FLA = Full load amperage

ELECTRICAL:

- ☐ LH Controls enclosure
- ☐ Toggle disconnect switch.
- ☐ FN2 – 90° line voltage enclosure.
- ☐ FN3 – Remote line voltage enclosure.
- ☐ Motor fusing.

OTHERS:

- ☐ Hanger brackets.

CW Coil O.D. Sweat Connections

Unit Size	No. of Row
	2, 4, & 6
40	
50	7/8" (22)



Page 1 of 2.

For heat options; see page 2.
Dimensions are in inches (mm).

SCHEDULE TYPE:	DATE	B SERIES	SUPERSEDES	DRAWING NO.
PROJECT:	12 - 3 - 14	3300	NEW	33SZ-2
ENGINEER:				
CONTRACTOR:				

☐ **Hot Water Coil Section**
Model 33SZW

Standard Features:

- Coil section installed on unit discharge.
- 1/2" (13) copper tubes.
- Aluminum ripple fins @ 10 FPI.
- Sweat Connections:
 Size 40 one row: 1/2" (13) O.D. male solder. All others: 7/8" (22) O.D. male solder.
- Flanged outlet duct connection.

Coil Rows:

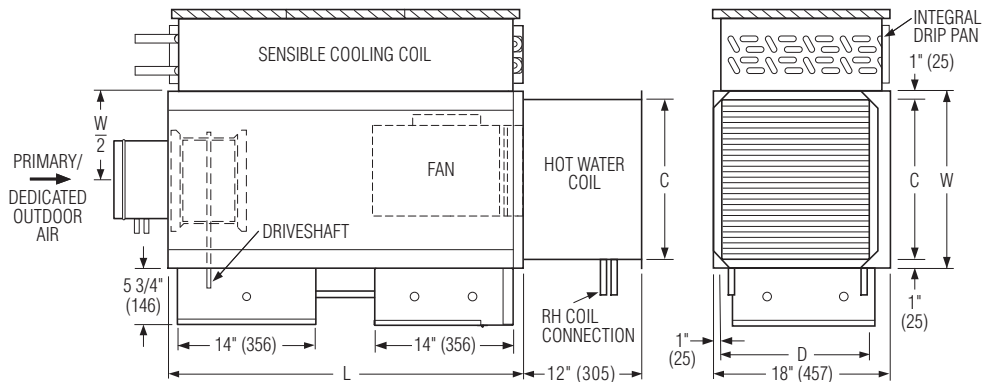
- ☐ 1-Row ☐ 2-Row

Coil Hand Connections:

(Looking in direction of airflow).

- ☐ Right Hand (illustrated). Standard.
☐ Left Hand. Optional.

Heating coil, sensible coil and controls enclosure orientation must all be specified separately.

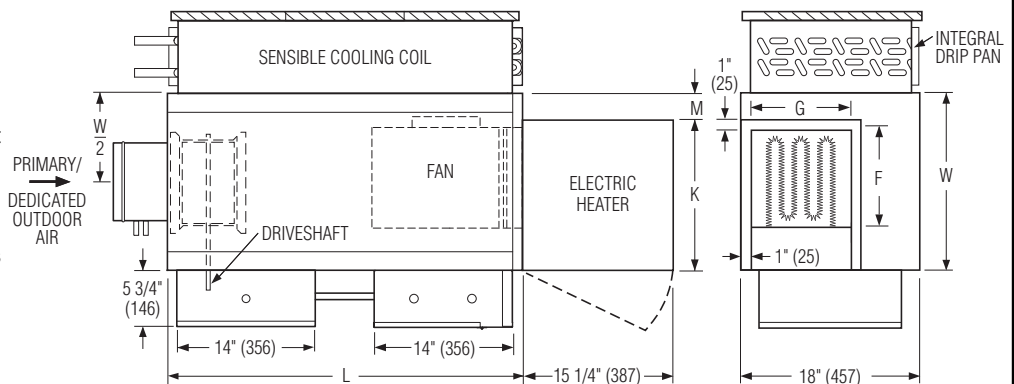


Unit Size	W	L	Outlet Duct Size C x D
40	18 (457)	36 (914)	16 X 15 (406 X 381)
50	26 (660)	41 (1041)	24 X 15 (610 X 381)

☐ **Electric Coil Section**
Model 33SZE

Standard Features:

- Unique hinged heater design permits easy access, removal and replacement of heater element without disturbing ductwork.
- Coil installed on unit discharge.
- Insulated coil element wrapper.
- Automatic reset high limit cut-outs (one per element).
- Single point electrical connection for entire terminal unit.
- Electronic Fan Interlock Relay.
- Flanged outlet duct connection.
- Controls mounted as standard on RH side as shown. Terminals ordered with L.H. controls (optional) are inverted and discharge duct hanging elevation will change.



Unit Size	W	L	K	M	Outlet Duct Size F x G
40	18 (457)	36 (914)	15 1/2 (394)	2 1/2 (64)	10 1/4 x 10 1/2 (260 x 267)
50	26 (660)	41 (1041)	22 (559)	4 (102)	14 1/4 x 11 1/4 (362 x 298)

Voltage:

Single phase, 60 Hz.

- ☐ 120V ☐ 208V
☐ 240V ☐ 277V

Three phase, 60 Hz.

- ☐ 208V ☐ 480V (4 wire wye).
☐ 600V (dual point connection).
☐ _____

Electric Coil Options:

- ☐ SCR control (0–10 VDC).
☐ 4–20ma
☐ with discharge temperature control.
☐ Toggle disconnect (includes fan).
☐ Door interlock disconnect switch.
☐ Quiet contactors.
- ☐ Main line fusing.
☐ Class 'A' 80/20 Ni./Ch. wire.
☐ Dust tight construction.
☐ Manual Reset secondary thermal cut out.
☐ Positive Pressure airflow switch.

Page 2 of 2.

Dimensions are in inches (mm).

SCHEDULE TYPE:

PROJECT:

ENGINEER:

CONTRACTOR:

DATE

B SERIES

SUPERSEDES

DRAWING NO.

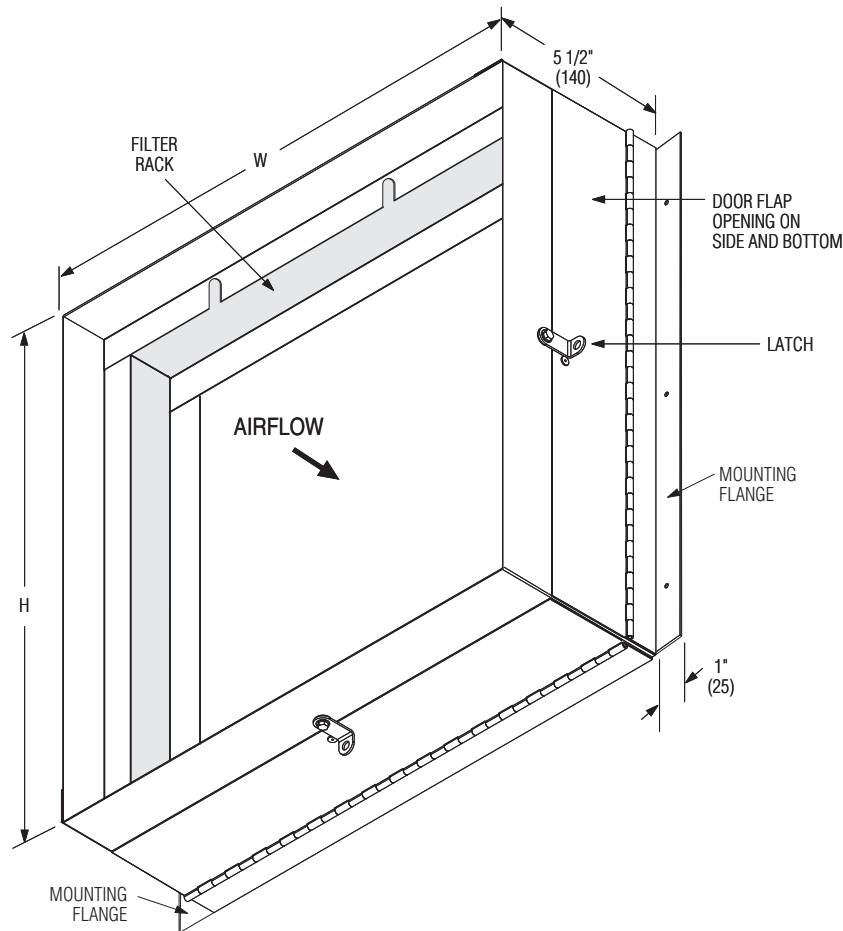
12 - 3 - 14

3300

NEW

33SZ-2

**FAN POWERED CHILLED WATER TERMINAL
 UNIVERSAL DUCTED RETURN FILTER RACK
 ACCESSORY CODE DRFR
 MODEL SERIES: 33SZ**



DESCRIPTION:

- The DRFR Ducted Return Filter Rack is an optional accessory for the Fan Powered Chilled Water Terminal Model Series 33SZ.
- The accessory is required for ducted inlet applications where a filter is also required and ease of accessibility is required.
- The Ducted Filter Connection features a filter rack, which accommodates a 1" (25) standard or 2" (51) optional filter.
- Factory mounted on the induced air inlet of the draw through water coil section.
- A piano-hinged door flap with latch on the side and bottom of the unit accessory allows for easy removal and replacement of the filter.
- The accessory is provided with a nominally sized duct connection collar.

Dimensional Data

Unit Size	Inlet Size W x H	Filter Size W x H
30	36 x 8 3/4 (914 x 222)	38 X 10 (965 X 254)
40	31 x 15 (787 x 381)	33 X 16 (838 X 406)
50	36 x 15 (914 x 381)	38 X 16 (965 X 406)

SCHEDULE TYPE:

PROJECT:

ENGINEER:

CONTRACTOR:

Dimensions are in inches (mm).

DATE

B SERIES

SUPERSEDES

DRAWING NO.

8 - 19 - 15

33SZ

2 - 11 - 15

33SZ-FR