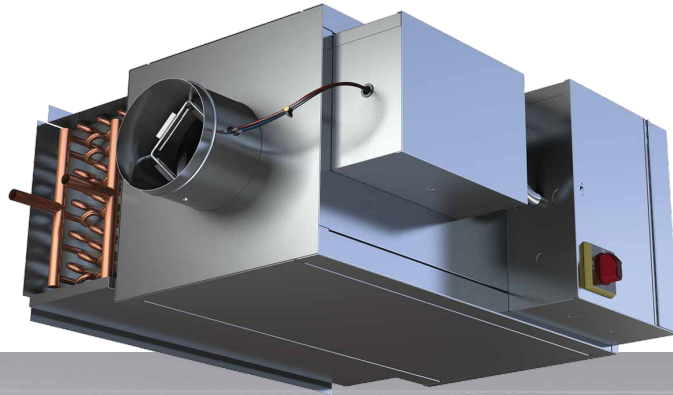


FAN POWERED CHILLED WATER TERMINAL UNIT 33SZ SERIES



The 33SZ Series Fan Powered Chilled Water Terminal Units (FPCWTU) enhance Nailor's already efficient and flexible Series Fan Powered Terminal Unit product line. The 33SZ Series incorporates a draw-thru cooling induction coil to use in conjunction with a DOAS (Dedicated Outdoor Air System). Useful in a variety of commercial and educational applications, like classrooms, office spaces, laboratories and auditoriums, the 33SZ provides a flexible, industry familiar unit that excels at zone sensible cooling while the dedicated outdoor air inlet delivers ASHRAE 62.1 ventilation requirements.

The unit can be used in a variety of applications including zone sensible cooling, supplemental heating, or even used together with an AHU to take advantage of economizer model. Depending on application, the 33SZ provides a universal product in a footprint similar to well established

fan powered terminal units. Additionally, the ducted discharge can service a larger zone than say, a chilled beam product. Whether the project uses a factory ready product or requires customization, Nailor is capable and ready to provide complete air control & distribution solutions.