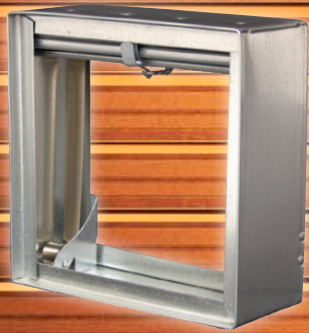


CURTAIN FIRE DAMPERS

UL 555
CLASSIFIED



MODEL SERIES:
D0100(SS)

MODEL SERIES:
D0500(SS)

MODEL SERIES:
(D)0110G

MODEL SERIES:
0100V/H(SS)

MODEL SERIES:
0500V/H(SS)

MODEL SERIES:
0200V/H

Dynamic Standard Frame

Min. Single Section	V/H: 6" x 6" (152 x 152)
Max. Single Section	V: 36" x 36" (914 x 914) H: 24" x 24" (610 x 610)
Max. Multiple Section	V: 72" x 24" (1829 x 610) or 36" x 48" (914 x 1219)

- 1-1/2 hour label
- 165°F (74°C) or 212°F (100°C) fusible link available
- Dynamic Velocity/Pressure ratings up to 4000 fpm @ 4 in. w.g. (20 m/s @ 1 kPa)
- Variety of transition styles and factory mounted sleeves available
- Use Model D01X4-1X for integral sleeve
- Optional non-standard fusible links, pull tab release, quick-set angle, flanged/hemmed sleeves, and microswitch options available
- Use Model D0100SS for Type 304 S. S. construction

Dynamic Standard Frame

Min. Single Section	V/H: 6" x 6" (152 x 152)
Max. Single Section	V: 36" x 36" (914 x 914) H: 24" x 24" (610 x 610)
Max. Multiple Section	V: 72" x 24" (1829 x 610) or 36" x 48" (914 x 1219)

- 3 hour label
- 165°F (74°C) or 212°F (100°C) fusible link available
- Dynamic Velocity/Pressure ratings up to 4000 fpm @ 4 in. w.g. (20 m/s @ 1 kPa)
- A variety of transition styles and factory mounted sleeves available
- Optional non-standard fusible links, pull tab release, quick-set angle, flanged/hemmed sleeves, and microswitch options available
- Use Model D0500SS for Type 304 S. S. construction

Static (Dynamic) Grille Mount

Min. Single Section	Static V/H: 4" x 4" (102 x 102)
	Dynamic V/H: 6" x 6" (152 x 152)
Max. Single Section	V/H: 24" x 24" (610 x 610)

- 1-1/2 hour label
- 165°F (74°C) or 212°F (100°C) fusible link available
- Dynamic Velocity/Pressure ratings up to 4000 fpm @ 4 in. w.g. (20 m/s @ 1 kPa)
- A variety of transition styles available
- Use Model D0110G for dynamic damper
- Optional quick-set angle for rear, flanged/hemmed sleeves, microswitch, and other options available

Static Standard Frame

Min. Single Section	V/H: 4" x 4" (102 x 102)
Max. Single Section	V/H: 60" x 60" (1524 x 1524)
Max. Multiple Section	V: 120" x 120" (3048 x 3048) H: 102" x 60" (2591 x 1524)

- 1-1/2 hour label
- 165°F (74°C) or 212°F (100°C) fusible link available
- A variety of transition styles and factory mounted sleeves available
- Optional non-standard fusible links, pull tab release, quick-set angle, flanged/hemmed sleeves, and microswitch options available
- Use Model 0100SS for Type 304 S. S. construction

Static Standard Frame

Min. Single Section	V/H: 4" x 4" (102 x 102)
Max. Single Section	V: 24" x 24" (610 x 610) H: 48" x 48" (1219 x 1219)
Max. Multiple Section	V: 108" x 72" (2743 x 1829) or 72" x 36" (1829 x 1219)

- 3 hour label
- 165°F (74°C) or 212°F (100°C) fusible link available
- A variety of transition styles and factory mounted sleeves available
- Optional non-standard fusible links, pull tab release, quick-set angle, flanged/hemmed sleeves, thinline frame variants, and microswitch options available
- Use Model 0500SS for Type 304 S. S. construction

Static Thinline Frame

Min. Single Section	V/H: 4" x 4" (102 x 102)
Max. Single Section	V: 41" x 36" (1041 x 914) or 36" x 60" (914 x 1524) H: 41" x 36" (1041 x 914)

- 1-1/2 hour label
- Suitable for narrow fire rated partitions, transfer duct openings, behind grilles, or wherever space is limited
- 165°F (74°C) or 212°F (100°C) fusible link available
- A variety of transition styles and factory mounted sleeves available
- Optional non-standard fusible links, pull tab release, quick-set angle, flanged/hemmed sleeves, and microswitch options available

NOTE: Max size and performance varies across models. Check submittal data sheets and RAPP for the most up to date information.



Per NFPA 80, Fire Dampers require inspection and testing 1 year after installation and every 4 years thereafter, except in hospitals, where the frequency is every 6 years.

For the most up to date information, go to
nailor.com

WACFL2