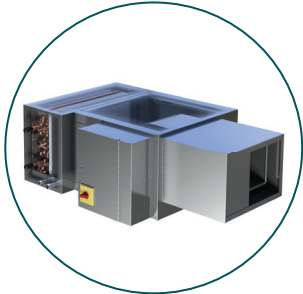


## Fan Coil Unit Portfolio



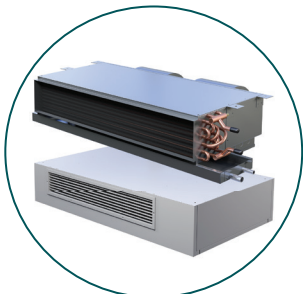
35FH	Sizes	Airflow (CFM)	Cooling Capacity (MBH)	Heating Capacity (MBH,KW)
Ducted draw through horizontal fan coil unit up to .75" of static pressure.	4 - 8	400 - 800	13.1 - 28.7	14 - 45, 1 - 5
	10 - 16	1,000 - 1,600	23 - 65	19 - 78, 2 - 11
	18 - 24	1,800 - 2,400	32 - 102	20 - 135, 2 - 16
	30	3,000	55 - 130	22 - 150, 2 - 30
	40	4,000	62 - 170	60 - 205, 2 - 50



37FH	Sizes	Airflow (CFM)	Cooling Capacity (MBH)	Heating Capacity (MBH,KW)
Low Profile, 11", Ducted draw through horizontal fan coil unit up to .75" of static pressure.	5	500	5 - 20.5	6.5 - 42, 1 - 6
	8	800	9 - 34	11 - 65, 1 - 10
	12	1,200	16 - 60	14 - 95, 1 - 18



39VH	Sizes	Airflow (CFM)	Cooling Capacity (MBH)	Heating Capacity (MBH,KW)
In room vertical stack high rise fan coil units. Delivered with or without risers.	3 - 6	360 - 600	8 - 25	10 - 44, 1 - 6.5
	8 - 10	900 - 1,000	10 - 42	12 - 68, 1 - 11.5
	12 - 15	1,250 - 1,500	20 - 65	25 - 95, 1 - 11.5
	19 - 21	1,900 - 2,150	25 - 80	28 - 110, 1 - 11.5



40H	Sizes	Airflow (CFM)	Cooling Capacity (MBH)	Heating Capacity (MBH,KW)
In room low profile, 10", horizontal units in concealed, ducted, and exposed configurations up to .5" of static pressure.	3	300	4.5 - 11.5	6 - 18, 1 - 3
	4	400	8 - 18	9 - 27, 1 - 3
	6	600	8 - 24	10 - 34, 1 - 6
	8	800	9 - 29	11 - 45, 2 - 7
	12	1,200	10 - 40	11 - 60, 2 - 8
	15	1,500	12 - 50	12.5 - 75, 2 - 10



41V & 42V	Sizes	Airflow (CFM)	Cooling Capacity (MBH)	Heating Capacity (MBH,KW)
Low Profile, 42V, and slim, 41V, in room floor mounted vertical units in exposed and concealed configurations	2, 42V	200	3.5 - 10	6.5 - 10, 1
	3	300	3.5 - 12.5	6.5 - 19, 1 - 1.5
	4	400	5 - 17	7 - 26, 1 - 2
	6	600	5.5 - 24	8 - 37, 1 - 3
	8, 41V	800	6 - 28	8 - 43, 1 - 4
	10, 41V	1,000	11 - 40	12 - 59, 1 - 5
	12, 41V	1,200	17 - 47	17 - 70, 1 - 6