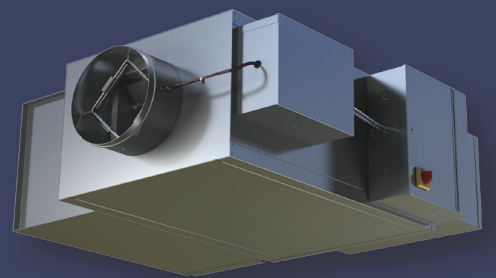


# STEALTH SERIES

FAN POWERED TERMINAL UNITS



 **Nailor**<sup>®</sup>  
The Comfort of Quality

# 35SST STEALTH Series

## Flow Sensor

Metallic multi-point averaging Diamond Flow sensor is more robust than a plastic option and is accurate to +/-5%, even without ideal supply ductwork.

## Cabinet

18 ga. frame provides structural strength and secure mounting for the 20 ga insulated panels. These panels provide access on top, bottom and side of the unit. Several liner options for any application.

## Line Voltage Enclosure

Hinged for easy access. Several mounting options, including remote, allow NEC code requirements to be met in tight spaces.

## Control Damper

Inclined Opposed Blade Damper provides superior control.

## STEALTH Attenuator

Reduces radiated sound and acts as an access panel for serviceability.

## Fan/Motor

Highly efficient fan and motor combinations are specifically designed to handle advanced control sequences for the most efficient VAV systems.

## Heating Coil: Hydronic/Electric

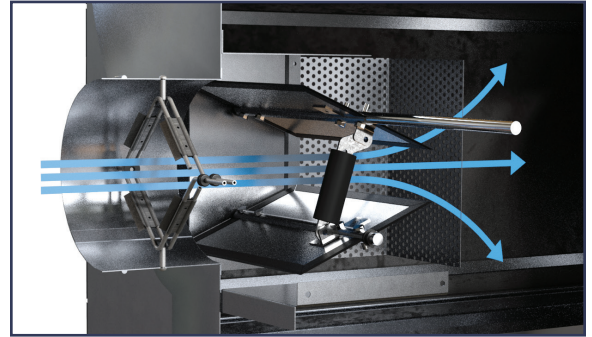
Hot Water Coils are fully encased and insulated. Nailor manufactures electric heating elements and can provide them in .1 kw increments.



# The Nailor Difference

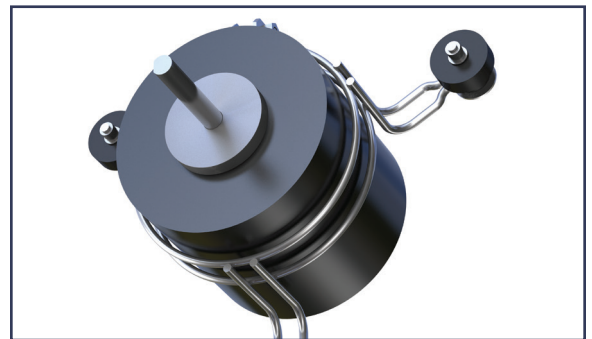
## Inclined Opposed Blade Damper (OBD)

The design and installation of the **Nailor OBD** significantly reduces inlet static pressure compared to a butterfly damper, reducing system energy use. The **45° closure design** delivers uniform air flow to the fan to ensure uniform airflow distributed through the ductwork. An air diffusion baffle on the damper eliminates fan shift.



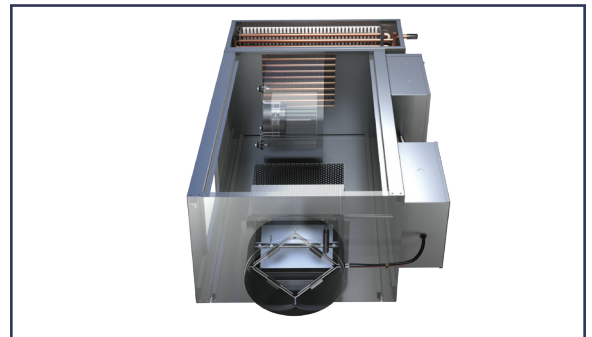
## EPIC Fan Technology®

Proprietary fully programmable and pressure independent ECM motor is paired with highly efficient blowers. Our ECM controller uses **EPIC Fan Technology®** to provide the most advanced control sequences and enables custom control to meet specific electric requirements for tight limits on building loads.



## Space Frame Cabinet Construction

Unique **space frame construction** provides increased strength and enables full size access panels on top, bottom and one side, including the STEALTH attenuator. **Fully encased hot water coils** reduce thermal heat loss and are protected from shipping/construction site damage. Valves are available to be factory mounted.



## Sound

The Nailor **STEALTH technology** includes an inlet attenuator that reduces the radiated sound from the units up to 20%. All Nailor sound data has been **100% independently verified**. Discharge silencers are also available for additional sound performance. The quietest portfolio of terminal units on the market allow the selection of larger units while maintaining acoustical comfort, reducing the system cost.



### Can units be flipped in the field?

Yes, regardless of how the unit is ordered, Right Hand/Left Hand, the unit can be flipped in the field to meet any application, even with electric heaters.

### In a retrofit application, can electrical current be limited to fit existing wiring and breakers?

Nailor has the unique ability to program the motor and electrical heater, if needed, to limit the supply to the unit. This information is stored at Nailor by serial number if any future modifications are required.

### Do motor replacements have the original program?

Like the custom electrical limits above, Nailor stores the program of every motor by serial number. If a replacement order references the serial number, the new motor will contain the original program.

### Is Nailor certified by AHRI?

All Nailor Units are tested in an independent lab, certified by AHRI, and listed at ETL.

### For sound sensitive large projects, is it possible to mock-up the space to ensure sound levels?

Nailor has partnered with Energistics Laboratory to recreate any room and measure actual sound levels.

### Can controls be mounted in the field?

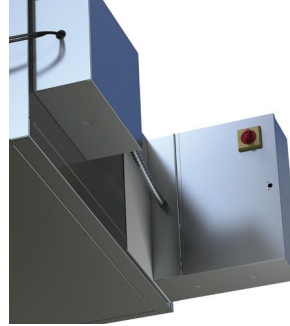
Yes, however factory mounting increases quality of the installation while reducing wire, conduit, and electrical box requirements. We mount all control manufacturers equipment supplied by the customer at our factory.

### What liner options, beyond the standard dual density fiberglass, are available?

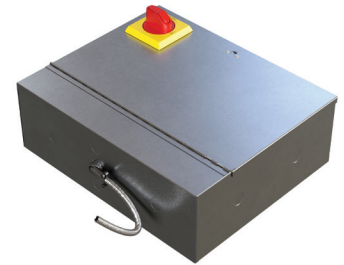
- Foil Faced Steri-Liner
- Fiber-Free Closed Cell Liner
- Perforated Metal Liner with FG
- Solid Metal Liner with FG
- Additional thicknesses

### What are the options for line voltage enclosure?

Two optional orientations for the control box are available for all fan powered terminal units to fit any application:



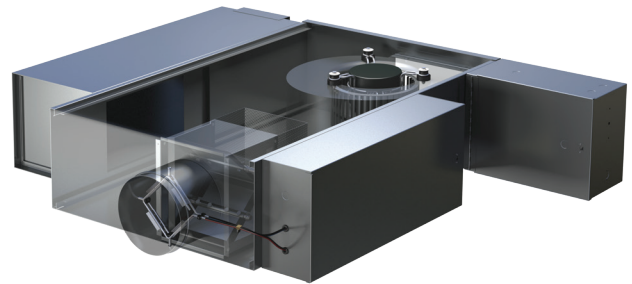
FN2 90° Mounted Control Box



FN3 Remote Control Box  
on 48" Umbilical

### Are there any low-profile options for ceiling constrained projects?

Nailor offers a full line of low-profile fan powered terminal units under the 37SST Model. The 37SST is only 11" tall while providing all the same features and benefits highlighted for the 35SST. The unit sizes range 100 to 1,700 cfm of airflow.



37SST Low Profile Series Fan Powered Terminal Unit