



**STATIC OUT OF WALL CURTAIN TYPE FIRE DAMPER
FOR GRILLES AND REGISTERS
FOR USE IN STATIC SYSTEMS
MODEL: 0120GOW (TYPE B)**



QUALIFICATIONS:

- **UL 555 & CAN/ULC-S112 CLASSIFIED FIRE DAMPER.**
1 1/2 hr. label (File # R9492).
- **Meets all the requirements of UL and NFPA 80, 90A and 101 for fire dampers in static HVAC systems, as well as IBC and NBC (Canada) Building Code requirements.**
- **City of New York Board of Standards and Appeals. Cal. No. 460-88-SA.**
- **California State Fire Marshal: Fire Damper Listing No. 3225-0935:0113.**

Model 0120GOW is an "out of wall or floor" integral sleeve curtain type fire damper, specifically designed for supply or return ducts that terminate at a grille or register. For use where local building codes require the protection of HVAC ductwork penetrations in walls, partitions or floors that have a fire resistance rating of up to two hours. The 0120GOW is classified for use only in static "fans off" systems where the HVAC system is automatically shut down in the event of a fire alarm.

The 0120GOW design provides sufficient damper off-set to accommodate most commercial grille/register designs while providing maximum free area without having to oversize the grille/register. This model is particularly suited for use in common steel stud drywall partition designs, as narrow as 3 1/2" (89) where a traditional "within the plane of the wall" fire damper installation is not possible.

FEATURES:

- 3/4" (19) mounting flange installation (field supplied), is hidden by grille frame and eliminates the requirement for unsightly mounting angles.
- Qualified for use with steel or aluminum grilles and registers (by Nailor or others).
- Shipped complete with integral insulated sleeve.
- UL Classified for vertical or horizontal installation.

STANDARD CONSTRUCTION:

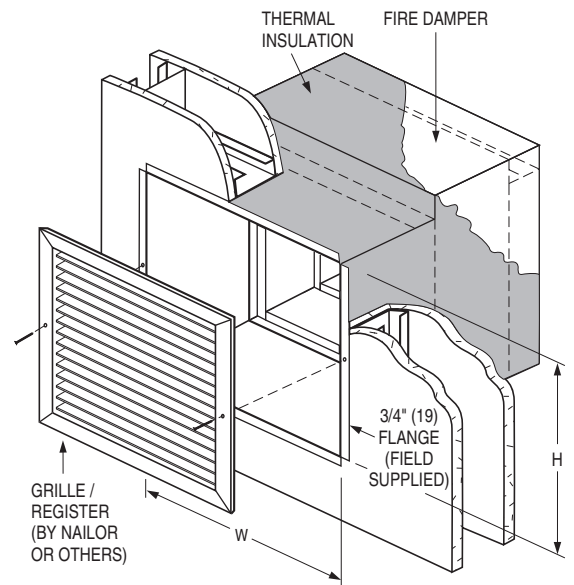
- Frame:** One piece, 22 ga. (0.85) roll-formed galvanized steel.
Blades: Curtain type interlocking blades, 22 ga. (0.85) roll-formed galvanized steel.
Fusible Link: 165°F (74°C) standard. UL Listed. 212°F (100°C) available.
Sleeve: 16 ga. (1.61) galvanized steel. Length varies to suit wall/floor depth.
Blade Closure: Vertical mount model; gravity.
Horizontal mount models are equipped with stainless steel closure springs and galvanized steel locking ramps.
Insulation: Intumescent thermal insulation on four sides.

Sizes (Duct W x H):

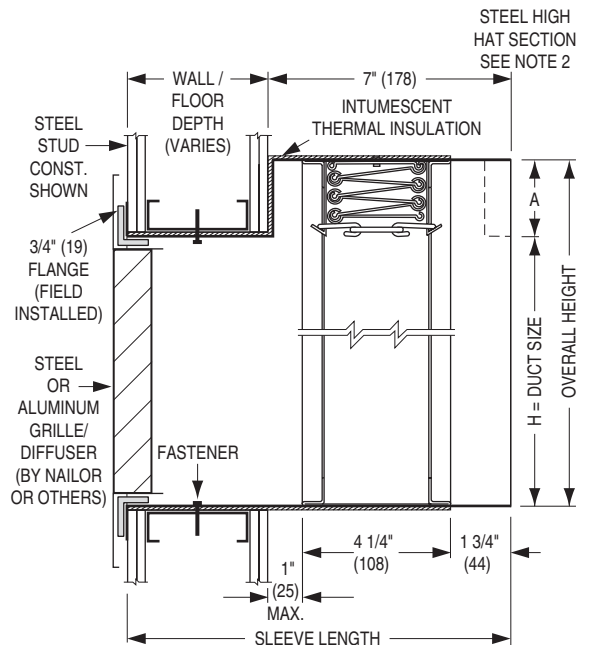
Minimum		Maximum
Single Section		Single Section
Vertical	Horizontal	Vertical/Horizontal
4" x 3" (102 x 76)	4" x 4" (102 x 102)	36" x 21" (914 x 533)

NOTES:

1. Sleeve Length Formula:
Wall or Floor Depth + 7" (178).
Example: Wall Depth 4" (102) + 7" (178) = 11" (279) sleeve.



STANDARD DAMPER/SLEEVE:



2.

Duct Height (H)	Dim. 'A'
4" - 17" (102 - 432)	2" (51)
18" - 21" (457 - 533)	3" (76)

SCHEDULE TYPE:

PROJECT:

ENGINEER:

CONTRACTOR:

For installation instructions, see IOM-FDGOWBINST.
Dimensions are in inches (mm).

DATE	B SERIES	SUPERSEDES	DRAWING NO.
9 - 1 - 23	FD	1 - 11 - 23	0100-10