



**STATIC OUT OF WALL CURTAIN TYPE FIRE DAMPER  
FOR THROUGH PENETRATIONS  
FOR USE IN STATIC SYSTEMS  
MODEL: 0110DOW (TYPE A)**



**QUALIFICATIONS:**

- **UL 555 & CAN/ULC-S112 CLASSIFIED FIRE DAMPER. 1 1/2 hr. label (File # R9492).**
- **Meets all the requirements of UL and NFPA 80, 90A and 101 for fire dampers in static HVAC systems, as well as IBC and NBC (Canada) Building Code requirements.**
- **City of New York Board of Standards and Appeals. Cal. No. 460-88-SA.**
- **California State Fire Marshal: Fire Damper Listing No. 3225-0935:0100.**

Model 0110DOW is an "out of wall or floor" integral sleeve curtain type fire damper, specifically designed for through penetrations (ductwork connected to both sides) where the damper cannot be installed within the plane of the wall. For use where local building codes require the protection of HVAC ductwork penetrations in walls, partitions or floors that have a fire resistance rating of up to two hours. The 0110DOW is classified for use only in static "fans off" systems where the HVAC system is automatically shut down in the event of a fire alarm.

**FEATURES:**

- Shipped complete with integral insulated sleeve. No field assembly required.
- UL Classified for vertical or horizontal installation.
- Qualified for use in Static Systems.

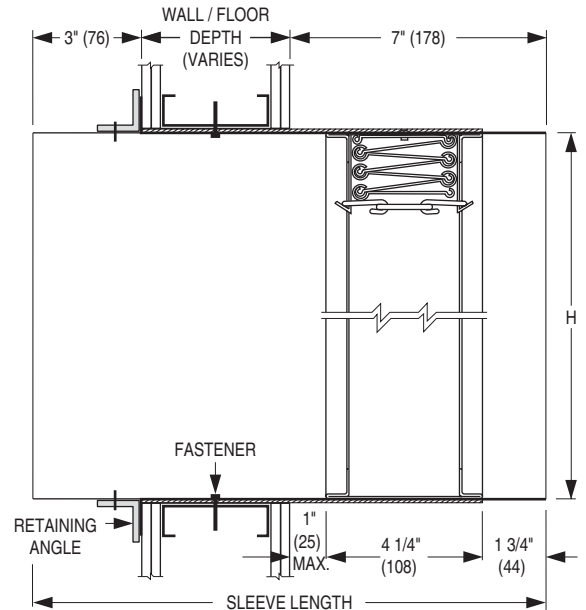
**STANDARD CONSTRUCTION:**

- Frame:** One piece, 22 ga. (0.85) roll-formed galvanized steel.  
**Blades:** Curtain type interlocking blades, 22 ga. (0.85) roll-formed galvanized steel.  
**Fusible Link:** 165°F (74°C) standard. UL Listed. 212°F (100°C) available.  
**Sleeve:** 16 ga. (1.61) galvanized steel with 3/4" (19) wide mounting flange. Length varies to suit wall/floor depth.  
**Blade Closure:** Vertical mount model; gravity. Horizontal mount models are equipped with stainless steel closure springs and galvanized steel locking ramps.  
**Insulation:** Intumescent thermal insulation on four sides.

**Sizes (Duct W x H):**

Minimum	Maximum
Single Section	Single Section
Vertical/Horizontal	Vertical/Horizontal
4" x 4" (102 x 102)	36" x 24" (914 x 610)

**STANDARD DAMPER/SLEEVE:**



**NOTES:**

Sleeve Length Formula:  
 Wall or Floor Depth + 10" (254)  
 Example: Wall Depth 4" (102) + 10" (254) = 14" (356)

For installation instructions, see IOM-FDDOWINST.

<b>SCHEDULE TYPE:</b>	Dimensions are in inches (mm)			
<b>PROJECT:</b>				
<b>ENGINEER:</b>	<b>DATE</b>	<b>B SERIES</b>	<b>SUPERSEDES</b>	<b>DRAWING NO.</b>
<b>CONTRACTOR:</b>	9 - 1 - 23	FD	1 - 11 - 23	0100-9