



CEILING RADIATION DAMPER WITH TOP EXTENSION AND ADJUSTABLE VOLUME CONTROL • ROUND MODELS: 0722A-SE AND 0722A-LE



QUALIFICATIONS:

- **UL 555C CLASSIFIED CEILING DAMPER (File # R9660).**
- **CAN4-S112.2 Ceiling Firestop Flap Assemblies.**
- **Meets the requirements for NFPA 90A, IBC, NBC (Canada) and associated local building codes.**
- **City of New York Board of Standards and Appeals. Cal. No. 460-88-SA.**
- **California State Fire Marshal: Fire Damper Listing No. 3225-0935:0102.**

MODEL SELECTION:

- 0722A-SE** Short extension
- 0722A-LE** Long extension

DESCRIPTION:

Ceiling dampers, or ceiling radiation dampers (known as Fire Stop Flaps in Canada), are designed to function as a fire and heat barrier in air duct openings penetrating fire resistive membrane ceilings. Models 0722A-SE and 0722A-LE are for use in round applications, in lieu of hinged door type dampers in any UL/ULC floor/ceiling or roof/ceiling assembly with up to a 3 hour fire resistance rating where air ducts are allowed. The extension collar on Models 0722A-SE and 0722A-LE minimizes the risk of interference with blade closure in flexible duct installations and helps ensure even airflow into the diffuser neck for optimum performance. These models incorporate a mechanism to adjust the opening of the blades for balancing airflow through the ceiling diffuser.

STANDARD CONSTRUCTION:

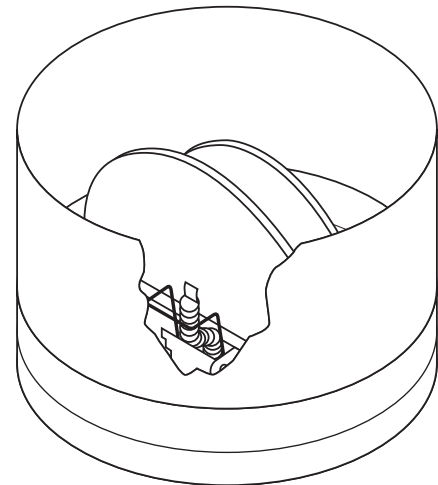
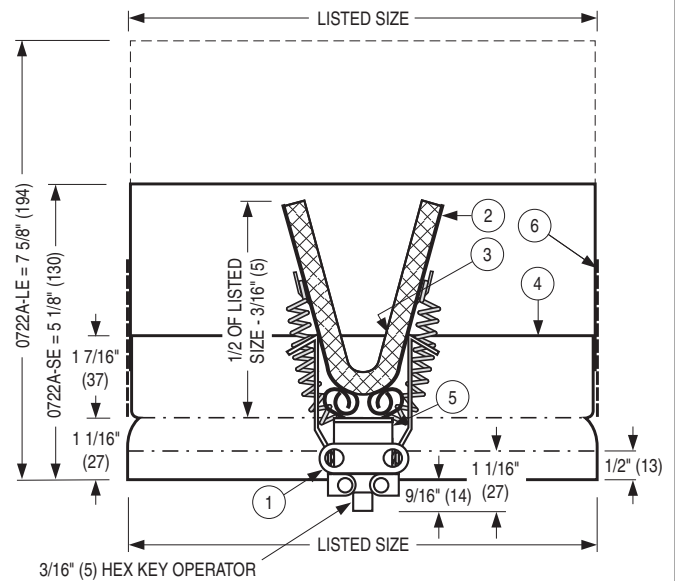
- Fusible Link:** UL Listed, 212°F (100°C), standard.
- Blades:** 22 ga. (0.85) G60 galvanized steel.
- Insulation:** Non-asbestos UL Classified on units 12 in. (305) dia. and larger. Not required on smaller units.
- Frame:** Roll-formed 22 ga. (0.85) G60 galvanized steel.
- Vol. Control:** Adjustable fusible link assembly permits volume control.
- Duct Drop:** By others.

Models 0722A-SE and 0722A-LE Sizes (Duct Dia.):

Minimum	Maximum
5" (127) dia.	16" (406) dia.

OPTION:

- Non-standard temperature U.L. Listed fusible link.
 - 165** 165°F (74°C)



For installation instructions, see IOM-CRDSINST and IOM-CRDTBINST.

Dimensions are in inches (mm).

SCHEDULE TYPE:				
PROJECT:				
ENGINEER:	DATE	B SERIES	SUPERSEDES	DRAWING NO.
CONTRACTOR:	4 - 28 - 14	0700	11 - 8 - 04R	0700-10