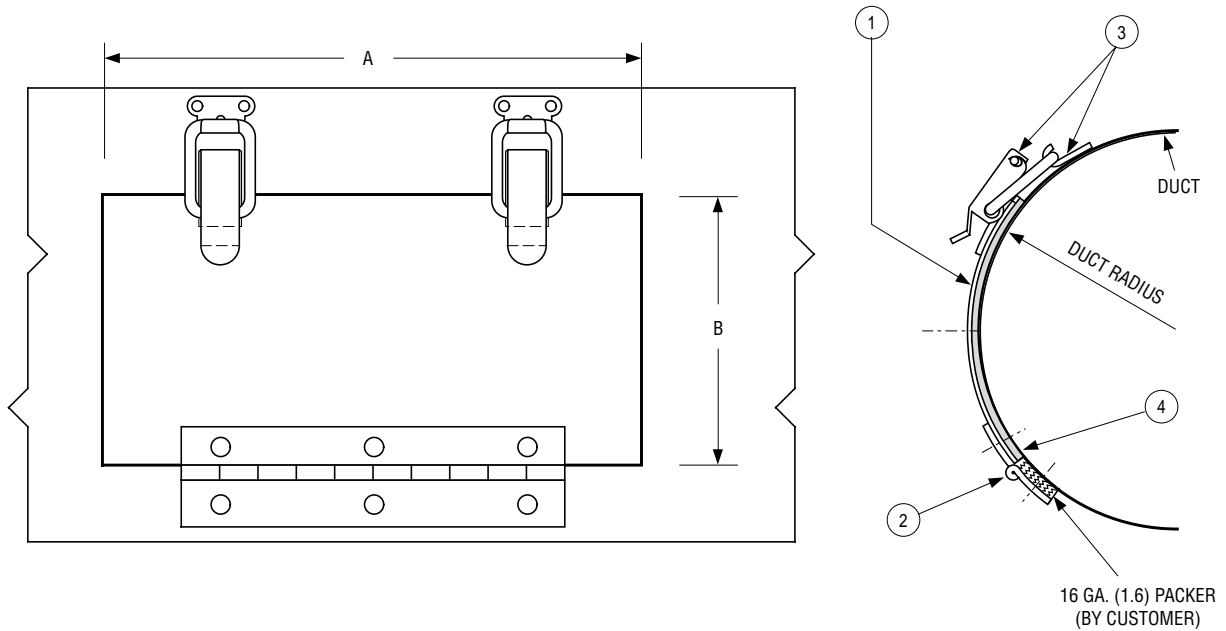




**LOW PRESSURE DUCT ACCESS DOOR  
FOR USE ON ROUND DUCT  
MODEL: 0890**

FOR USE IN LOW PRESSURE DUCT SYSTEMS



| DUCT SIZE | DIMENSION "A" | DIMENSION "B" |
|-----------|---------------|---------------|
| 5 (127)   | 7 (178)       | 4 (102)       |
| 6 (152)   | 8 (203)       | 5 (127)       |
| 7 (178)   | 9 (229)       | 6 (152)       |
| 8 (203)   | 10 (254)      | 7 (178)       |
| 9 (229)   | 11 (279)      | 8 (203)       |
| 10 (254)  | 12 (305)      | 9 (229)       |
| 12 (305)  | 14 (356)      | 10 (254)      |
| 14 (356)  | 16 (406)      | 12 (305)      |
| 16 (406)  | 16 (406)      | 12 (305)      |
| 18 (457)  | 18 (457)      | 14 (356)      |
| 20 (508)  | 18 (457)      | 16 (406)      |
| 24 (610)  | 18 (457)      | 16 (406)      |

**MODEL DESCRIPTION:**

Hinged door installs easily onto low pressure round duct providing convenient access. Strike and catch style closure and factory installed gasket ensure positive seal.

**STANDARD CONSTRUCTION:**

1. Duct access door 16 ga. (1.6) galvanized steel.
2. Zinc plated hinge.
3. Strike and catch. Zinc plated steel.
4. Polyethylene gasket.
5. Other sizes are available; contact factory.

|                       |  |
|-----------------------|--|
| <b>SCHEDULE TYPE:</b> |  |
| <b>PROJECT:</b>       |  |
| <b>ENGINEER:</b>      |  |
| <b>CONTRACTOR:</b>    |  |

Dimensions are in inches (mm).

| DATE        | B SERIES | SUPERSEDES | DRAWING NO. |
|-------------|----------|------------|-------------|
| 4 - 20 - 04 | 0800     | 9 - 93RR   | 0800-3      |