



**SMOKE DAMPER**  
LEAKAGE CLASS I OR II  
STEEL • VEE BLADE  
MODELS: 1260 AND 1261 (TYPE A)



**QUALIFICATIONS:**

- UL 555S & CAN/ULC-S112.1 CLASSIFIED SMOKE DAMPER Leakage Class I or II at 250°F or 350°F elevated temperature. (File # R9492)
- Meets NFPA 90A, 92, 101 and 105 as well as IBC and NBC (Canada) Building Code requirements.
- City of New York. Board of Standards and Appeals. Cal. No. 460-88-SA.
- California State Fire Marshal: Fire Damper Listing No. 3225-0935:0107.
- Maximum velocity: 2000 fpm @ 4" w.g. (10 m/s @ 1 kPa).

Model Series 1260 Dampers are ideal for applications where building codes require a leakage rated smoke damper as part of a static smoke control or dynamic smoke management system. The 1260 Series has been especially designed and tested to offer a rugged cost effective damper well suited to the majority of commercial applications. Qualified for vertical or horizontal installation with airflow in either direction.

**STANDARD CONSTRUCTION:**

- Frame:** 5" x 7/8" x 16 ga. (127 x 22 x 1.6) galv. steel hat channel.  
**Blades:** 6" (152) wide on 5 1/2" (140) centers. 16 ga. (1.6) galvanized steel vee groove or double-skin design.  
**Linkage:** Concealed in frame. 12 ga. (2.7) plated steel.  
**Bearings:** 1/2" (13) dia. self-lubricating oilite bronze.  
**Axles:** 1/2" (13) dia. plated steel double bolted to blades.  
**Jackshaft:** 1/2" (13) dia. plated steel.  
**Jamb Seals:** Stainless steel.  
**Blade Seals:** Silicone on vee groove blade.

**Sizes (Duct W x H):**

Velocity/ Pressure Rating	Elevated Temp. °F	Minimum		Maximum	
		Single Section	Single Section	Multiple Section	
		Vertical/Horizontal	Vertical/Horizontal	Vertical/Horizontal	Vertical/Horizontal
24	250/350	8" x 8" (203 x 203)	36" x 48" (914 x 1219)	144" x 48" (3658 x 1219) or 36" x 96" (914 x 2438)	

**Notes:** Dampers with duct heights less than 8" (203) require a Type 'B' sleeve enclosure (Model 1262). Units less than 8" (203) in width require a Type 'C' enclosure (Model 1263).

**BASE MODEL SELECTION:**

- 1260** With actuator side mounting plate
- 1261** Standard factory sleeve 16" long x 20 ga. (406 x 1.0) (18 ga. for dampers over 84" [2134] in width).
- 1261** Non-standard sleeve. Specify \_\_\_\_\_ length \_\_\_\_\_ ga. Available up to 36" (914) dependent upon wall thickness and 10 through 20 ga. (3.5 through 1.0).

**LEAKAGE CLASS / ELEVATED TEMPERATURE:**

- I  II @ 250°F (Standard)
- I  II @ 350°F (Optional)

**DYNAMIC VELOCITY/PRESSURE RATING:**

- 24** 2000 fpm @ 4" w.g. (Standard)

**ACTUATOR SELECTION:**

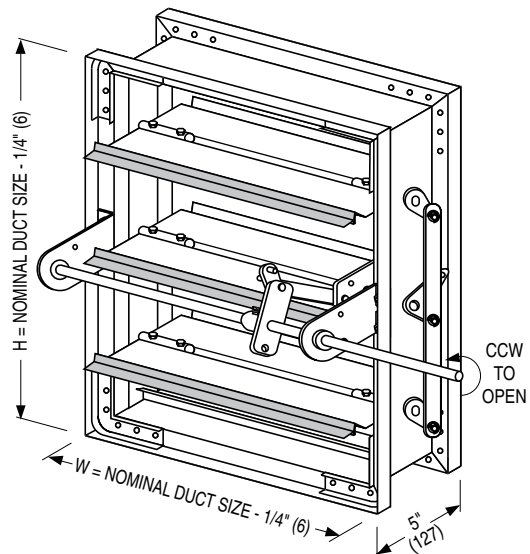
- Electric**  **Pneumatic** Specify model \_\_\_\_\_.

**SCHEDULE TYPE:**

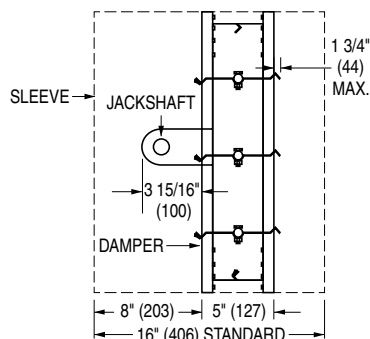
**PROJECT:**

**ENGINEER:**

**CONTRACTOR:**



**MODEL 1260**  
(Side Mounting Plate/Sleeve not shown)



Wall Thickness	Minimum Sleeve Length
4 (102)	16 (406)
8 (203)	20 (508)
12 (305)	24 (610)
16 (406)	28 (711)

**MODEL 1261:**  
**TYPE A SLEEVE**

**ACTUATOR LOCATION:**

- External** (std.)  **Internal** (in the airstream)

**ACTUATOR FAIL POSITION:**

- Normally Closed** (std.)  **Normally Open**

**OPTIONS:**

- BS** Stainless steel bearings
- MLS-300** Position indicator switch package
- DSDL** Low Flow Smoke Detector
- DSDN** No Flow Smoke Detector
- TDF1** Flange (one end)
- TDF2** Flange (both ends)
- Special features** \_\_\_\_\_.

For installation instructions, see IOM-SDINST.  
Dimensions are in inches (mm).

DATE	B SERIES	SUPERSEDES	DRAWING NO.
10 - 11 - 24	1260	4 - 28 - 14	1260-1