



COMBINATION FIRE/SMOKE DAMPER
1 1/2 HOUR LABEL • LEAKAGE CLASS I OR II
MODEL: 1272
(TYPE B SLEEVE ENCLOSURE)



FOR DUCTS UNDER 8" (203) IN HEIGHT AND 8" (203) OR MORE IN WIDTH

QUALIFICATIONS:

- UL 555 & CAN/ULC-S112 CLASSIFIED DYNAMIC FIRE DAMPER 1 1/2 hr. Label (File # R9492).
- UL 555S & CAN/ULC-S112.1 CLASSIFIED SMOKE DAMPER Leakage Class I or II at 250°F or 350°F elevated temperature (File # R9492).
- California State Fire Marshal: Fire Damper Listing No. 3225-0935:106.
- City of New York Board of Standards and Appeals. Cal. No. 460-88-SA.
- Meets NFPA 80, 90A, 92A, 92B, 101 and 105 as well as IBC and NBC (Canada) Building Code requirements.
- Maximum velocity 2000 fpm @ 4" w.g.

The 1270 Series dampers are ideal for applications where building codes require both a fire damper for the protection of ductwork penetrations in walls or floors that have a fire resistance rating of up to 2 hours and also require a leakage rated damper for operational smoke control in static or dynamic smoke management systems.

The 1270 Series has been especially designed and tested to offer a rugged cost effective damper well suited to the majority of commercial applications.

STANDARD SPECIFICATION:

- Frame:** 5" x 7/8" x 16 ga. (127 x 22 x 1.6) galvanized steel hat channel.
- Blades:** 6" (152) wide on 5 1/2" (140) centers. 16 ga. (1.6) galvanized steel vee groove or double-skin design.
- Linkage:** Concealed in frame. 12 ga. (2.7) plated steel.
- Bearings:** 1/2" (13) dia. self-lubricating oilite bronze.
- Axles:** 1/2" (13) dia. plated steel bolted to blades.
- Jackshaft:** 1/2" (13) dia. cadmium plated steel.
- Jamb Seals:** Stainless steel.
- Blade Seals:** Silicone on vee groove blade.

Heat Responsive Device (Controlled Closure):

ERL (Electric Resettable Link) is standard on dampers with electric actuators: 250°F (121°C) standard. 165°F (74°C), 212°F (100°C) and 350°F (176°C) available.

PRL (Pneumatic Replaceable Link) is standard on dampers with pneumatic actuators: 212°F (100°C) standard. 165°F (74°C) and 280°F (138°C) available.

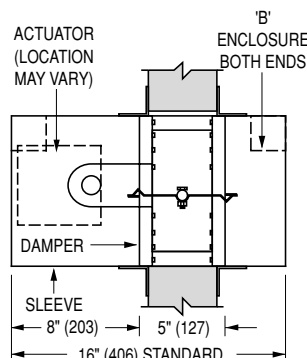
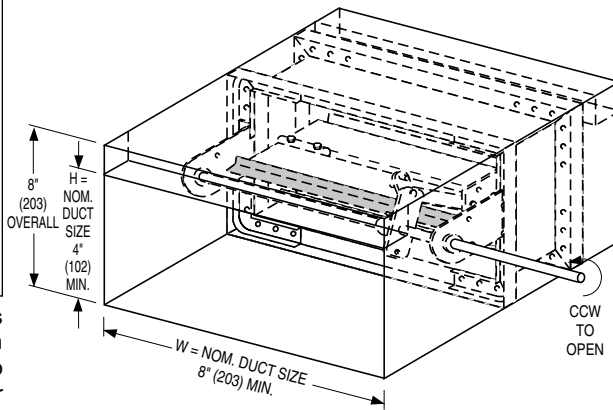
Min. Duct Size: 8" x 4" (203 x 102) (Overall damper H is 8" [203]).

- Max. Duct Size:** Single Section
 Vertical mount: 36" x 7 1/2" (914 x 191).
 Horizontal mount: 30" x 7 1/2" (762 x 191).
 Multiple Section Assembly
 Vertical mount: 72" x 7 1/2" (1829 x 191).
 Horizontal mount: 60" x 7 1/2" (1524 x 191).

Duct sizes less than 8" (203) in width require a Type 'C' enclosure (Model 1273).

SLEEVE/ENCLOSURE SELECTION:

- 1272** Standard factory sleeve (caulked to UL requirements) 16" long x 20 ga. (406 x 1.0) (18 ga. for dampers over 84" [2134] in width).
- 1272** Non-standard sleeve. Specify _____ length _____ ga. Available up to 36" (914) dependent upon wall thickness and 10 through 20 ga. (3.5 through 1.0).



| Wall Thickness | Minimum Sleeve Length |
|----------------|-----------------------|
| 4 (102) | 16 (406) |
| 8 (203) | 20 (508) |
| 12 (305) | 24 (610) |
| 16 (406) | 28 (711) |

LEAKAGE CLASS / ELEVATED TEMPERATURE:

- I II @ 250°F (Standard)
- I II @ 350°F (Optional)

ACTUATOR SELECTION:

- Electric Pneumatic Specify model _____

ACTUATOR LOCATION :

- External (std.) Internal (in the airstream)

ACTUATOR FAIL POSITION: Closed.

OPTIONS:

- BS** Stainless steel bearings
- MLS-300** Position indicator switch pack
- MLS-400** Electric Fire Sensor (Re-openable control system). Includes dual heat sensors (165°F and 250°F or 350°F) and position indicator switch pack.
- QS1** Quick-set retaining angle (one side)
- QS2** Quick-set retaining angles (two sides)

For installation instructions, see IOM-1270INST.

SCHEDULE TYPE:

PROJECT:

ENGINEER:

CONTRACTOR:

Dimensions are in inches (mm)

| DATE | B SERIES | SUPERSEDES | DRAWING NO. |
|--------------|----------|-------------|-------------|
| 10 - 16 - 24 | 1200 | 4 - 28 - 11 | 1270-2 |