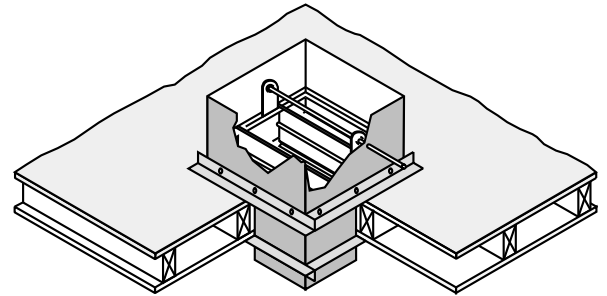
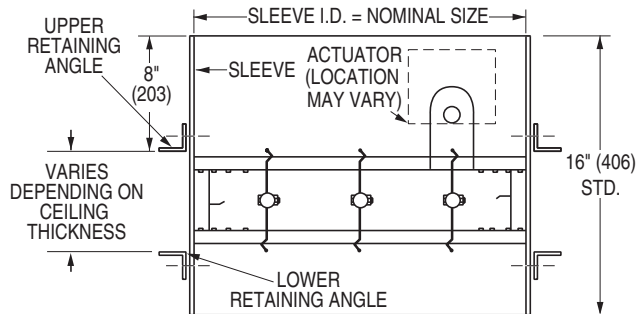




**TUNNEL CORRIDOR COMBINATION  
FIRE/SMOKE DAMPER FOR  
DUCTED INSTALLATION  
MODEL: 1271C-2**



**QUALIFICATIONS:**

- **UL 555 CLASSIFIED CORRIDOR DAMPER, 1 hr. Fire Resistance Rating (File #15441).**
- **UL 555S CLASSIFIED SMOKE DAMPER, Class I or II at 250°F or 350°F elevated temp. (File #9492).**
- **California State Fire Marshal: Fire Damper Listing No. 3225-0935:106.**
- **Meets the requirements of NFPA 90A, NFPA 92A for Fire/Smoke Dampers.**
- **Meets the requirements of City of Los Angeles, Uniform Building Code.**
- **Maximum velocity 2000 fpm @ 4" w.g.**

**STANDARD SPECIFICATION:**

- Frame:** 5" x 7/8" x 16 ga. (127 x 22 x 1.6) galvanized steel hat channel.
- Blades:** 6" (152) wide on 5 1/2" (140) centers. 16 ga. (1.6) galvanized vee groove or double-skin design.
- Sleeve:** 16" x 20 ga. (406 x 1.0) standard.
- Upper Retaining Angles:** 1 1/2" x 1 1/2" x 16 ga. (38 x 38 x 1.6) galvanized steel (by Nailor).
- Lower Retaining Angles:** 1 1/2" x 1 1/2" x 16 ga. (38 x 38 x 1.6) galvanized steel by installing contractor (optionally by Nailor).
- Linkage:** Concealed in frame.
- Bearings:** 1/2" (13) dia. self-lubricating oilite bronze.
- Axles:** 1/2" (13) dia. plated steel double bolted to blades.
- Jamb Seals:** Cambered stainless steel.
- Blade Seals:** Stainless steel on vee groove blade.
- Heat Responsive Device (Controlled Closure):**  
250°F (121°C) std. 165°F (74°C), 212°F (100°C) and, with ERL only, 350°F (176°C) available.  
ERL (Electric Resettable Link) is standard on all dampers with electric actuators. PRL (Pneumatic Replaceable Link) is standard on all dampers with pneumatic actuators.

**Minimum Size:** 8" x 8" (203 x 203).  
**Maximum Size:** 24" x 24" (610 x 610).

**LEAKAGE CLASS / ELEVATED TEMPERATURE:**

- I     II    @ 250°F (Standard)
- I     II    @ 350°F (Optional)

**ACTUATOR SELECTION:**

- Electric**       **Pneumatic Model** \_\_\_\_\_ .

Actuators are mounted for Fail Closed (Normally Closed) operation in accordance with code requirements.

**ACTUATOR LOCATION:**

- Out of airstream     In the airstream

**OPTIONS:**

- MLS-300** Position indicator switch pack.
- MLS-400** Electric Fire Sensor (Re-openable control system). Includes dual heat sensors (165°F and 250°F or 350°F) and position indicator switch pack.
- Non-standard sleeve length or gauge.**  
Specify: \_\_\_\_\_ inches (mm) x \_\_\_\_\_ ga.
- Factory mounted upper retaining angles.**
- Lower retaining angles by Nailor.**  
(Shipped loose for field attachment).
- Special Features.**  
Specify: \_\_\_\_\_ .

**Square-to-Round Transition Collars:**

(Factory mounted and caulked to UL requirements).

- SRT** (top of damper ) Dia. = \_\_\_\_\_ .
- SRB** (bottom of damper ) Below ceiling for round neck diffuser steel duct/flex duct connection.  
Dia. = \_\_\_\_\_ .
- SR2** (top and bottom ) Dia. = \_\_\_\_\_ .

For installation instructions, see IOM-TCFSDINST.

<b>SCHEDULE TYPE:</b>		Dimensions are in inches (mm).			
<b>PROJECT:</b>					
<b>ENGINEER:</b>	<b>DATE</b>	<b>B SERIES</b>	<b>SUPERSEDES</b>	<b>DRAWING NO.</b>	
<b>CONTRACTOR:</b>	6 - 16 - 16	1270C	1 - 19 - 05	1270C-2	