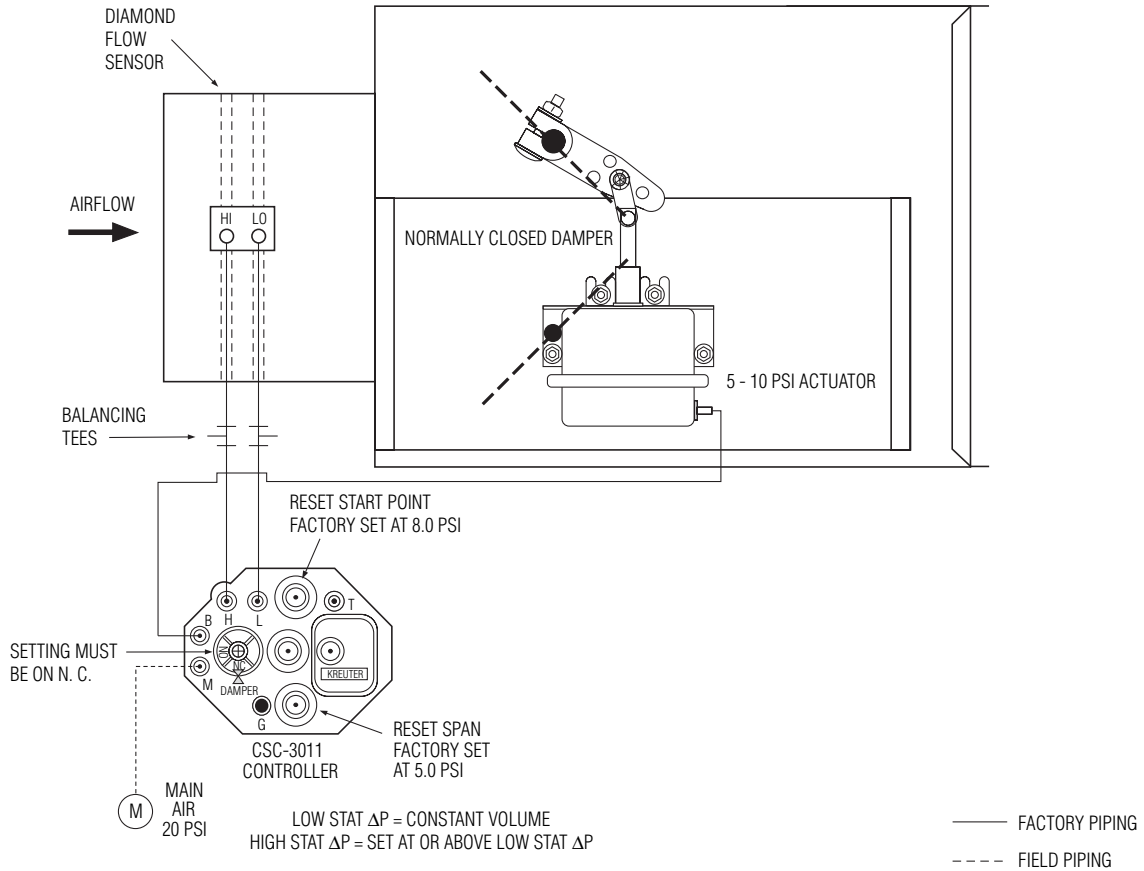




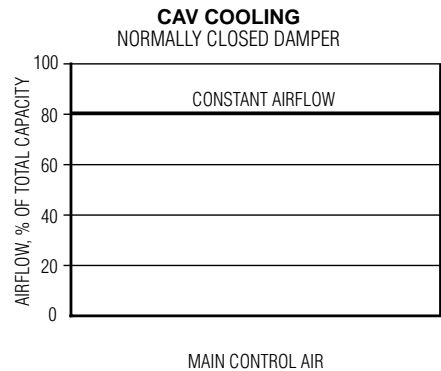
**PNEUMATIC CONTROLS
SINGLE DUCT CAV TERMINAL UNIT
MODEL: 3001
CONTROL SEQUENCE: 7P3 (CSC-3011)**



COOLING ONLY • CONSTANT AIR VOLUME, NORMALLY CLOSED DAMPER • PRESSURE INDEPENDENT

Sequence of Operation:

1. When main control air is off, damper is closed.
2. Main control air on - controller is activated. Maintains preset constant air volume regardless of duct pressure or room temperature.
3. A room thermostat is not used.
4. If main control air fails, damper fails closed.



SCHEDULE TYPE:					
PROJECT:					
ENGINEER:		DATE	B SERIES	SUPERSEDES	DRAWING NO.
CONTRACTOR:		10 - 18 - 07	3000	23 - 4 - 01	3000CD-7P3