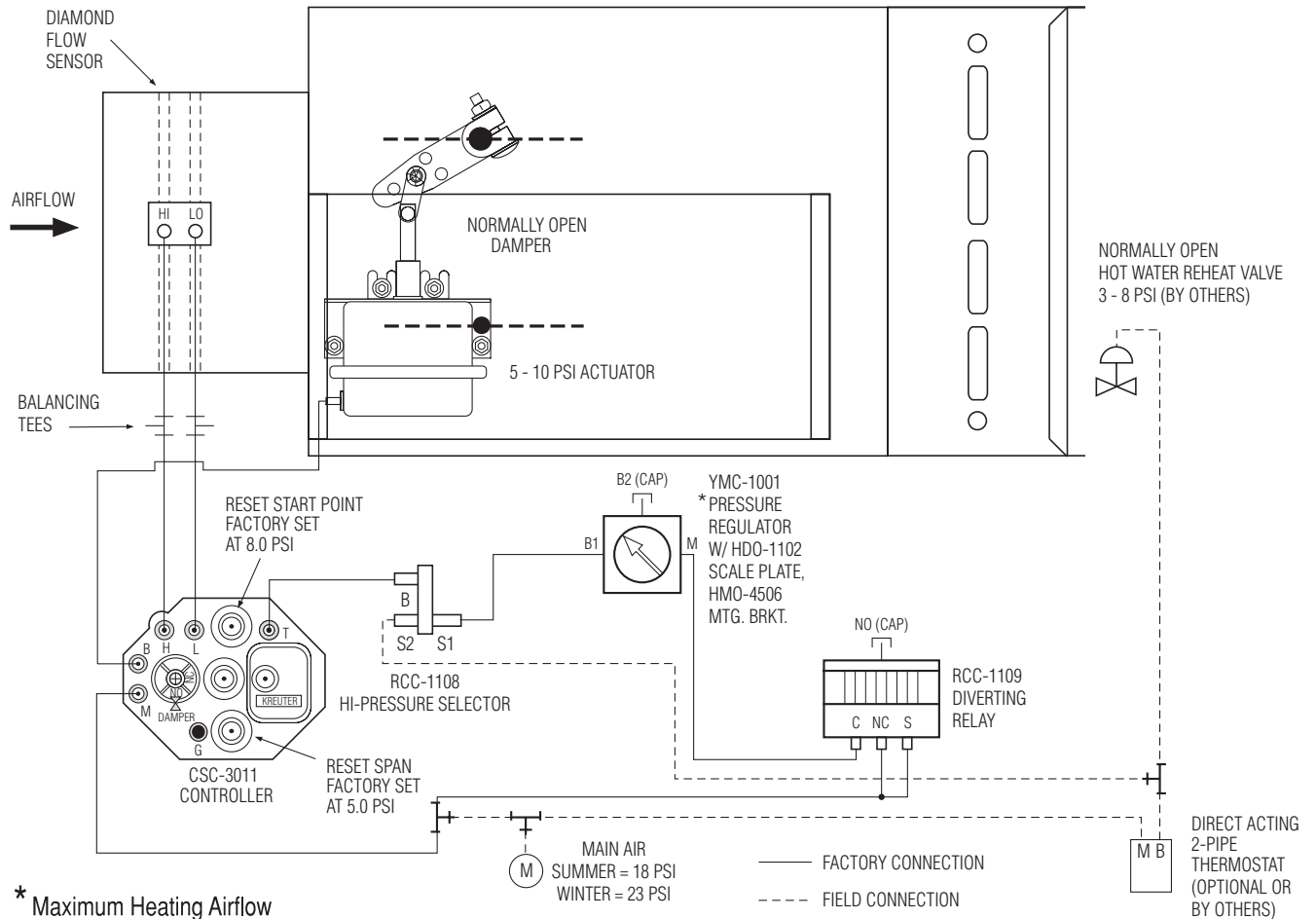




SINGLE DUCT TERMINAL UNIT
MODEL: 30RW • PNEUMATIC • CSC-3011
DUAL MIN. FLOW WITH HOT WATER REHEAT
CONTROL SEQUENCE: 1P3 + Q3



* Maximum Heating Airflow

$$= \left[\left(\frac{\text{max. heating cfm}}{\text{max. cooling cfm}} \right)^2 \times 5 \right] + 8.0$$

VARIABLE AIR VOLUME • PRESSURE INDEPENDENT DA/NO
• SUMMER/WINTER DUAL MINIMUM FLOWS WITH HOT WATER REHEAT • DUAL PRESSURE MAIN AIR

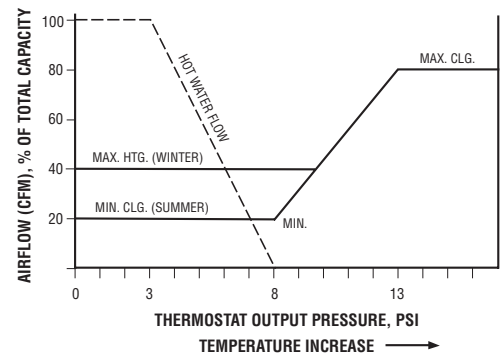
Sequence of Operation:

Summer: As the room temperature increases, the room thermostat modulates the cold airflow from minimum to the maximum setting. As the room temperature decreases, the damper modulates to the minimum airflow position. If room temperature continues to drop the hot water valve modulates open.

Winter: As the room temperature decreases, the airflow will modulate from maximum cooling airflow down to the maximum heating airflow. If room temperature continues to drop, the hot water valve will modulate open.

The maximum heating airflow is determined by the pressure signal from the pressure regulator.

If main control air fails, damper fails open and hot water valve fails open. (Morning warm-up setting if required).



Dimensions are in inches (mm).

SCHEDULE TYPE:			
PROJECT:			
ENGINEER:			
CONTRACTOR:			
DATE	B SERIES	SUPERSEDES	DRAWING NO.
11 - 1 - 01	3000	NEW	30RWCD-Q3