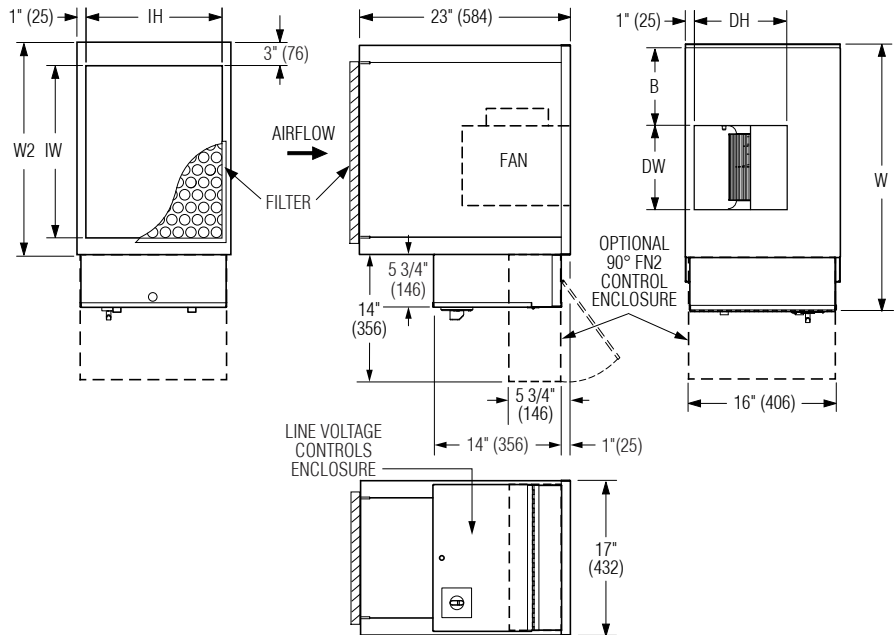


STANDARD FEATURES:

- 18 ga. (1.3) galvanized steel channel frame with 20 ga. (1.0) casing components.
- 3/4" (19) dual density insulation, exposed edges coated to prevent air erosion. Meets the requirements of NFPA 90A and UL 181.
- Ultra-energy efficient ECM fan motor with overload protection. Solid state EPIC fan volume controller.
- Motor blower assembly mounted on special 16 ga. (1.6) angles and isolated from casing with rubber isolators.
- Single point electrical connection.
- Discharge opening designed for flanged duct connection.
- Controls mounted as standard on RH side as shown. Fan Coil ordered with LH controls (optional) are inverted and discharge duct hanging location will change.
- 1" (25) throwaway fiberglass media filter.



CONTROLS:

- By others.

OPTIONS AND ACCESSORIES:

- 2" (51) pleated disposable filter.
 - MERV 8
 - MERV 13
- Fiber-free liner.
- Perforated metal liner.
- Steri-liner.
- Steri-liner w/perf.
- 1" (25) fiberglass liner.
- Hanger brackets.
- LH controls location/configuration.
- Toggle disconnect switch.
- Ducted return filter rack connection (see separate submittal 35FH/37FH-FFR).
- FN2 90° line voltage enclosure.
- FN3 Remote line voltage enclosure (see separate submittal FN3).

Dimensional Data

| Unit Size | Nominal CFM (l/s) | W | W2 | B | Inlet IW x IH | Outlet Discharge DW x DH | Filter Size |
|-----------|-------------------|---------------|----------|-------------|---------------------|-----------------------------|---------------------|
| 8 | 800 (378) | 28 3/4 (730) | 23 (584) | 8 1/2 (216) | 19 x 15 (483 x 381) | 9 1/4 x 10 1/8 (235 x 257) | 20 x 16 (508 x 406) |
| 16 | 1600 (755) | 42 3/4 (1086) | 37 (940) | 16 (406) | 33 x 15 (838 x 381) | 13 1/4 x 11 1/4 (337 x 286) | 35 x 16 (889 x 406) |

Electrical Data

| Unit Size | Motor HP | EPIC ECM Motor FLA | | | |
|-----------|----------|--------------------|------|------|------|
| | | 120V | 208V | 240V | 277V |
| 8 | * | 3.3 | 2.2 | 2.1 | 2.1 |
| 16 | * | 7.2 | 4.9 | 4.7 | 4.6 |

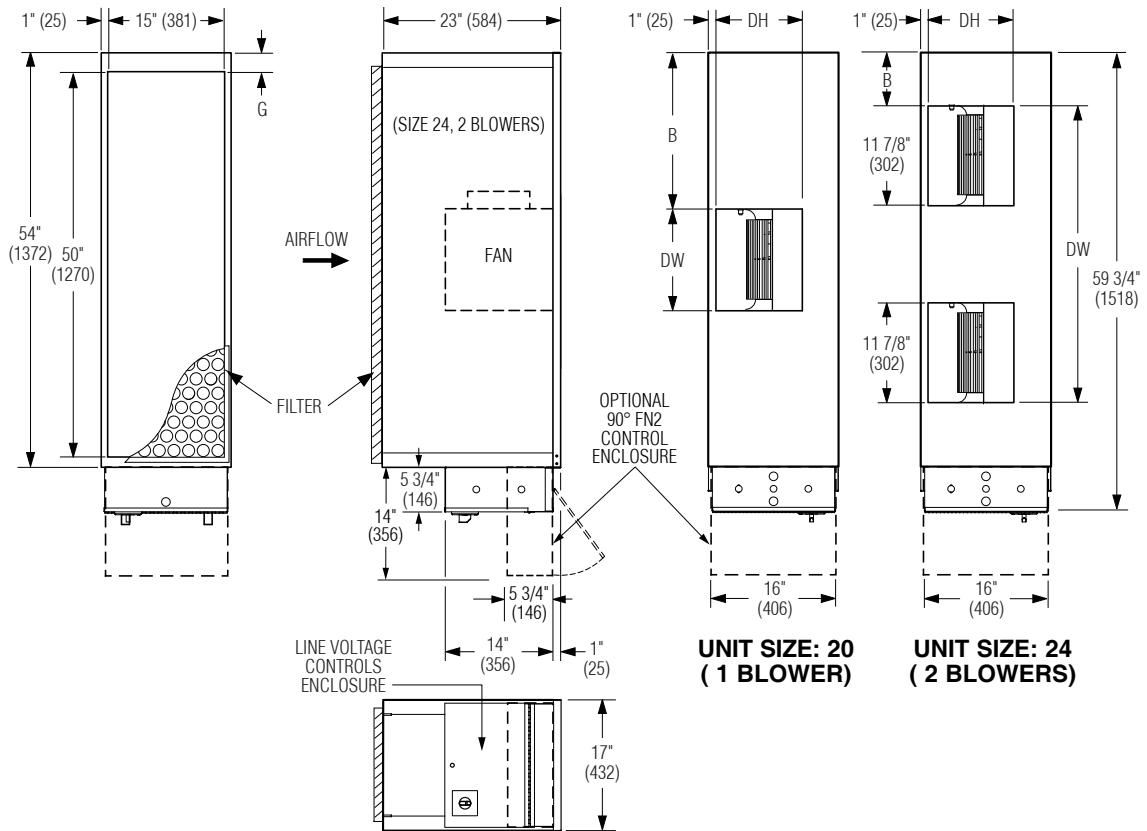
* The EPIC ECM is a variable horsepower motor. Refer to Selectworks schedule for actual power consumption. FLA = Full load amperage. All motors are single phase/60 Hz.



| | |
|-----------------------|--|
| SCHEDULE TYPE: | |
| PROJECT: | |
| ENGINEER: | |
| CONTRACTOR: | |

Page 1 of 3.
Dimensions are in inches (mm).

| DATE | B SERIES | SUPERSEDES | DRAWING NO. |
|-------------|----------|------------|-------------|
| 4 - 11 - 22 | 35FH | NEW | 35FH-10 |



Dimensional Data

| Unit Size | Nominal CFM (l/s) | B | G | Outlet Discharge DW x DH | Filter Size |
|-----------|-------------------|--------------|--------|-----------------------------|----------------------|
| 20 | 2000 (944) | 20 3/8 (518) | 3 (76) | 13 1/4 x 11 1/4 (337 x 286) | 52 x 16 (1321 x 406) |
| 24 | 2400 (1133) | 7 (178) | 3 (76) | 39 1/4 x 11 1/4 (997 x 286) | 52 x 16 (1321 x 406) |

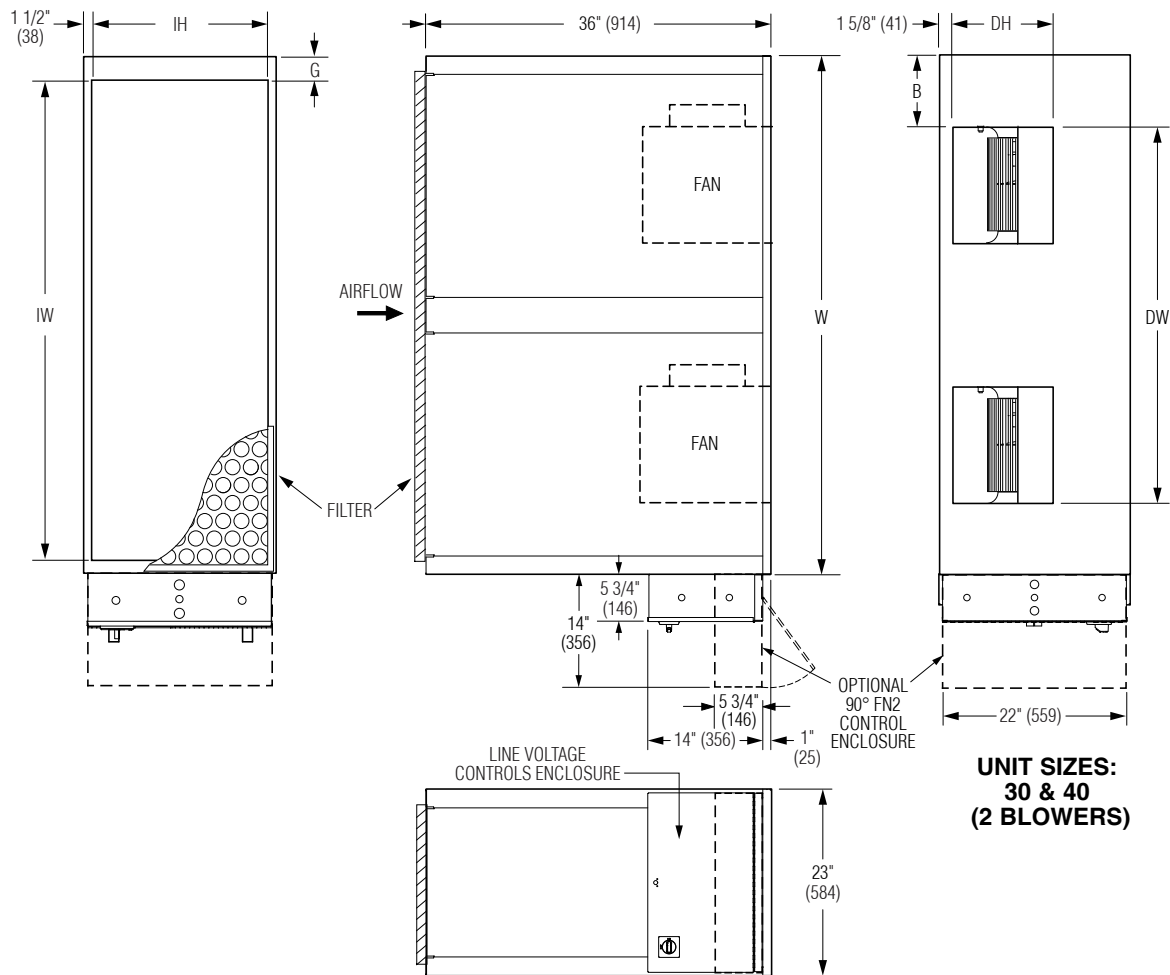
Electrical Data

| Unit Size | Motor HP | EPIC ECM Motor FLA | | | |
|-----------|----------|--------------------|------|------|------|
| | | 120V | 208V | 240V | 277V |
| 20 | * | 9.6 | 6.3 | 6.1 | 6.0 |
| 24 | * | 11.8 | 7.9 | 7.8 | 7.5 |



* The EPIC ECM is a variable horsepower motor.
Refer to Selectworks schedule for actual power consumption.
FLA = Full load amperage. All motors are single phase/60 Hz.

| | | | | | |
|-----------------------|-------------|--------------------------------|-------------------|--------------------|--|
| SCHEDULE TYPE: | | Page 2 of 3. | | | |
| PROJECT: | | Dimensions are in inches (mm). | | | |
| ENGINEER: | DATE | B SERIES | SUPERSEDES | DRAWING NO. | |
| CONTRACTOR: | 4 - 11 - 22 | 35FH | NEW | 35FH-10 | |



**UNIT SIZES:
30 & 40
(2 BLOWERS)**

Dimensional Data

| Unit Size | Nominal CFM (l/s) | W | B | G | Inlet IW x IH | Outlet Discharge DW x DH | Filter Size |
|-----------|-------------------|-----------|--------------|------------|----------------------|------------------------------|----------------------|
| 30 | 3000 (1416) | 54 (1372) | 7 (178) | 2 3/8 (60) | 50 x 20 (1270 x 508) | 39 1/4 x 11 1/2 (997 x 292) | 22 x 52 (559 x 1321) |
| 40 | 4000 (1888) | 64 (1626) | 8 5/16 (211) | 2 7/8 (73) | 60 x 20 (1524 x 508) | 46 3/8 x 12 1/2 (1178 x 318) | 22 x 62 (559 x 1575) |

Electrical Data

| Unit Size | Motor HP | EPIC ECM Motor FLA | | | |
|-----------|----------|--------------------|------|------|------|
| | | 120V | 208V | 240V | 277V |
| 30 | * | 12.6 | 8.7 | 8.4 | 8.0 |
| 40 | * | 19.4 | 12.5 | 11.9 | 11.6 |

* The EPIC ECM is a variable horsepower motor. Refer to Selectworks schedule for actual power consumption. FLA = Full load amperage. All motors are single phase/60 Hz.



| | |
|-----------------------|--|
| SCHEDULE TYPE: | |
| PROJECT: | |
| ENGINEER: | |
| CONTRACTOR: | |

Page 3 of 3.
Dimensions are in inches (mm).

| DATE | B SERIES | SUPERSEDES | DRAWING NO. |
|-------------|----------|------------|-------------|
| 4 - 11 - 22 | 35FH | NEW | 35FH-10 |