

CONTROLS:

- ☐ By others.
- ☐ Nailor Thermostat.

OPTIONS AND ACCESSORIES:

- 2" (51) pleated disposable filter.
 - ☐ MERV 8
 - ☐ MERV 13
 - ☐ Fiber-free liner.
 - ☐ Perforated metal liner.
 - ☐ Steri-liner.
 - ☐ Steri-liner w/perf.
 - ☐ 1" (25) fiberglass liner.
 - ☐ Hanger brackets.
 - ☐ LH controls location/configuration.
 - ☐ Safety overflow float switch.
 - ☐ Toggle disconnect switch.
 - ☐ Ducted return filter rack connection (see separate submittal 35FH/37FH-FFR).
 - ☐ Mixing Box (See submittal 35FH-MB).
 - ☐ FN2 90° line voltage enclosure.
 - ☐ FN3 Remote line voltage enclosure (see separate submittal FN3).
 - ☐ Induced Air Silencer (see separate submittals 35FH-DSI and 35FH-DSIE).
- Seismic Certification:
- ☐ SSI (Standard)
 - ☐ OSHPD
 - ☐ Special Features: _____

Dimensional Data

Unit Size	Nominal CFM (l/s)	Outlet Duct Size F x G	K	M	Filter Size
20	2000 (944)	15 1/4 x 11 3/4 (387 x 298)	23 (584)	18 3/8 (467)	52 x 16 (1321 x 406)
24	2400 (1133)	41 1/4 x 11 3/4 (1048 x 298)	49 (1245)	5 (127)	52 x 16 (1321 x 406)

Electrical Data

Unit Size	Motor HP	EPIC ECM Motor FLA			
		120V	208V	240V	277V
20	*	9.6	6.3	6.1	6.0
24	*	11.8	7.9	7.8	7.5

* The EPIC ECM is a variable horsepower motor.
Refer to Selectworks schedule for actual power consumption.
FLA = Full load amperage. All motors are single phase/60 Hz.



SCHEDULE TYPE:

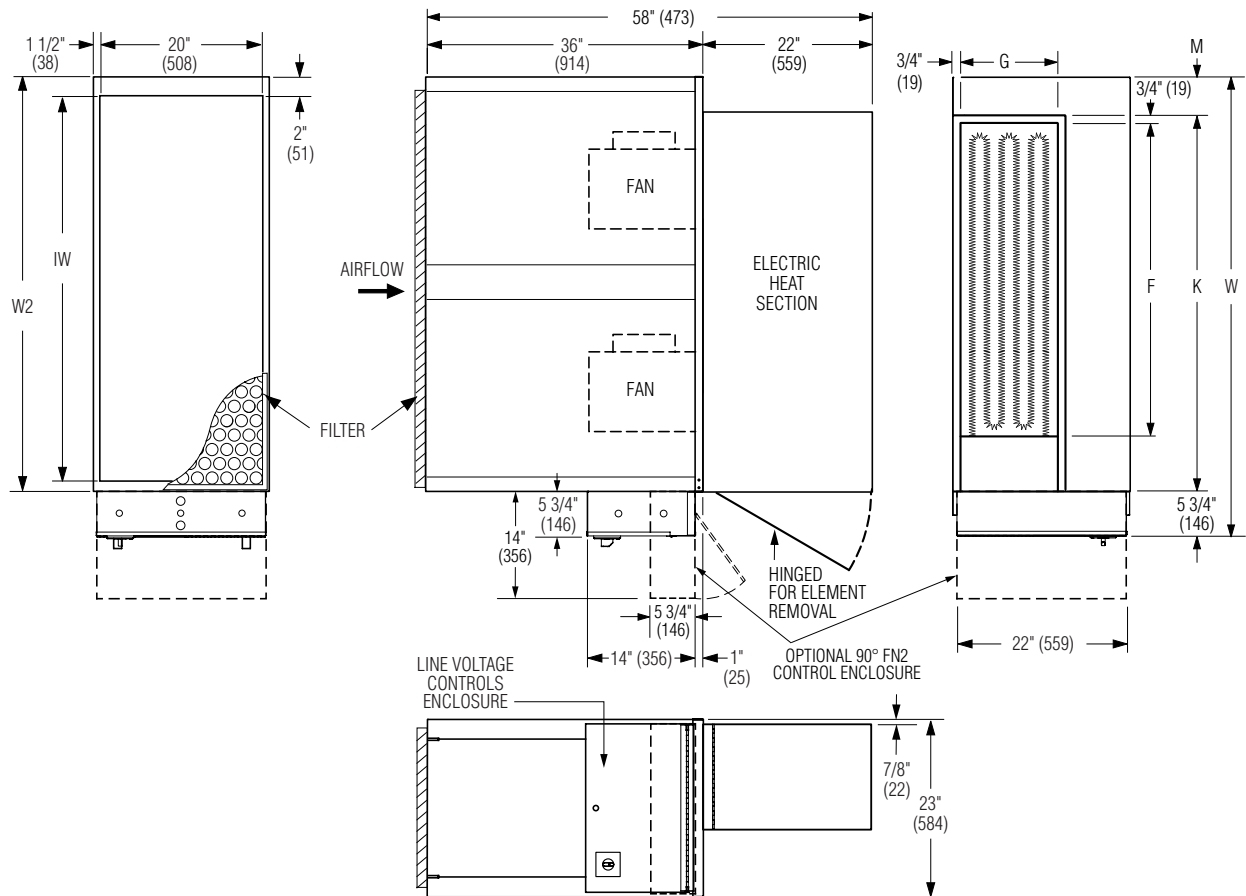
PROJECT:

ENGINEER:

CONTRACTOR:

Page 2 of 3.
Dimensions are in inches (mm).

DATE	B SERIES	SUPERSEDES	DRAWING NO.
5 - 6 - 25	35FH	4 - 11 - 22	35FH-6



Dimensional Data

Unit Size	Nominal CFM (l/s)	Outlet Duct Size F x G	K	M	W2	IW	W	Filter Size
30	3000 (1416)	41 1/2 x 12 (1054 x 305)	49 (1245)	5 (127)	54 (1372)	50 (1270)	59 3/4 (1518)	22 x 52 (559 x 1321)
40	4000 (1888)	48 1/2 x 13 1/2 (1232 x 343)	57 (1448)	7 (178)	64 (1626)	60 (1524)	69 3/4 (1772)	22 x 62 (559 x 1575)

Electrical Data

Unit Size	Motor HP	EPIC ECM Motor FLA			
		120V	208V	240V	277V
30	*	12.6	8.7	8.4	8.0
40	*	19.4	12.5	11.9	11.6

* The EPIC ECM is a variable horsepower motor.
Refer to Selectworks schedule for actual power consumption.
FLA = Full load amperage. All motors are single phase/60 Hz.



SCHEDULE TYPE:

PROJECT:

ENGINEER:

CONTRACTOR:

Page 3 of 3.
Dimensions are in inches (mm).

DATE

B SERIES

SUPERSEDES

DRAWING NO.

5 - 6 - 25

35FH

4 - 11 - 22

35FH-6