

STANDARD FEATURES:

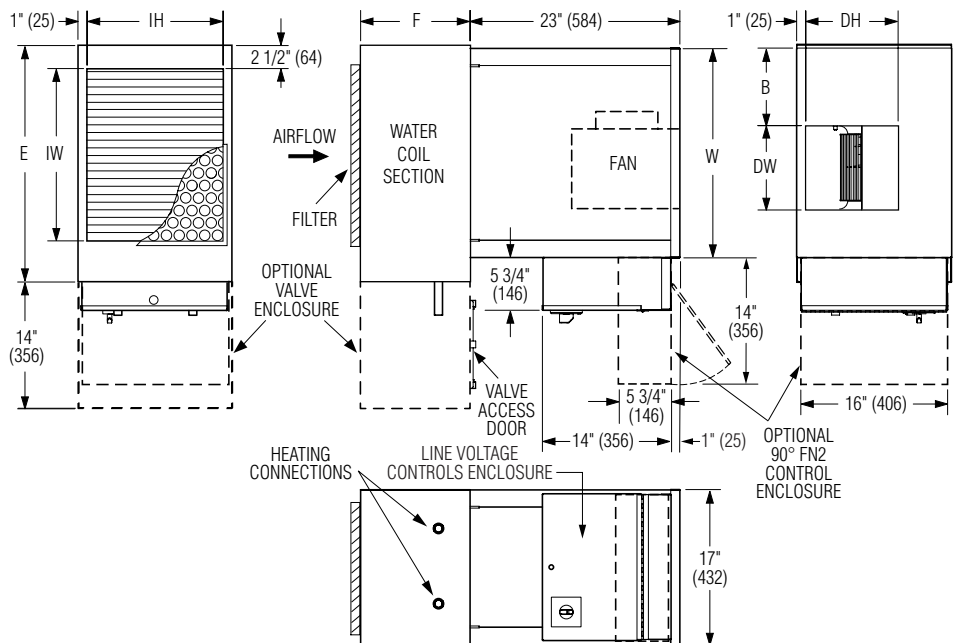
- 18 ga. (1.3) galvanized steel channel frame with 20 ga. (1.0) casing components.
- 3/4" (19) dual density insulation, exposed edges coated to prevent air erosion. Meets the requirements of NFPA 90A and UL 181.
- Side and bottom full size access panels for ease of maintenance and service.
- Ultra-energy efficient ECM fan motor with overload protection. Solid state EPIC fan volume controller.
- Motor blower assembly mounted on special 16 ga. (1.6) angles and isolated from casing with rubber isolators.
- Single point electrical connection.
- Discharge opening designed for flanged duct connection.
- Controls mounted as standard on RH side as shown. Fan Coil ordered with LH controls (optional) are inverted and discharge duct hanging location will change.
- 1" (25) throwaway fiberglass media filter.

WATER COIL SECTION:

- Installed on inlet as a draw through design.
- Coil (and header on multi-circuit units) is installed in insulated (fiber-free/foam) casing for increased thermal efficiency.
- 1/2" (13) copper tubes with aluminum ripple fins.
- Side and bottom access panels for inspection and coil cleaning.
- Right hand coil connection shown (looking in direction of airflow) is standard. Left hand is optional.

Coil Options:

- 2 Pipe system:
- 1 Row HW.
 - 2 Row HW.
 - 3 Row HW.



Dimensional Data

Unit Size	Nominal CFM (l/s)	W	B	E	F	Inlet IW x IH	Outlet Discharge DW x DH	Filter Size
8	800 (378)	23 (584)	8 1/2 (216)	26 (660)	12 (305)	19 x 15 (483 x 381)	9 1/4 x 10 1/8 (235 x 257)	20 x 16 (508 x 406)
16	1600 (755)	37 (940)	16 (406)	40 (1016)		33 x 15 (838 x 381)	13 1/4 x 11 1/4 (337 x 286)	35 x 16 (889 x 406)

Electrical Data

Unit Size	Motor HP	EPIC ECM Motor FLA			
		120V	208V	240V	277V
8	*	3.3	2.2	2.1	2.1
16	*	7.2	4.9	4.7	4.6

* The EPIC ECM is a variable horsepower motor. Refer to Selectworks schedule for actual power consumption. FLA = Full load amperage. All motors are single phase/60 Hz.

Coil O.D. Sweat Connections

Unit Size	Number of Rows	
	1 & 2	3
8	5/8	7/8
16	5/8	7/8



SCHEDULE TYPE:

PROJECT:

ENGINEER:

CONTRACTOR:

DATE

B SERIES

SUPERSEDES

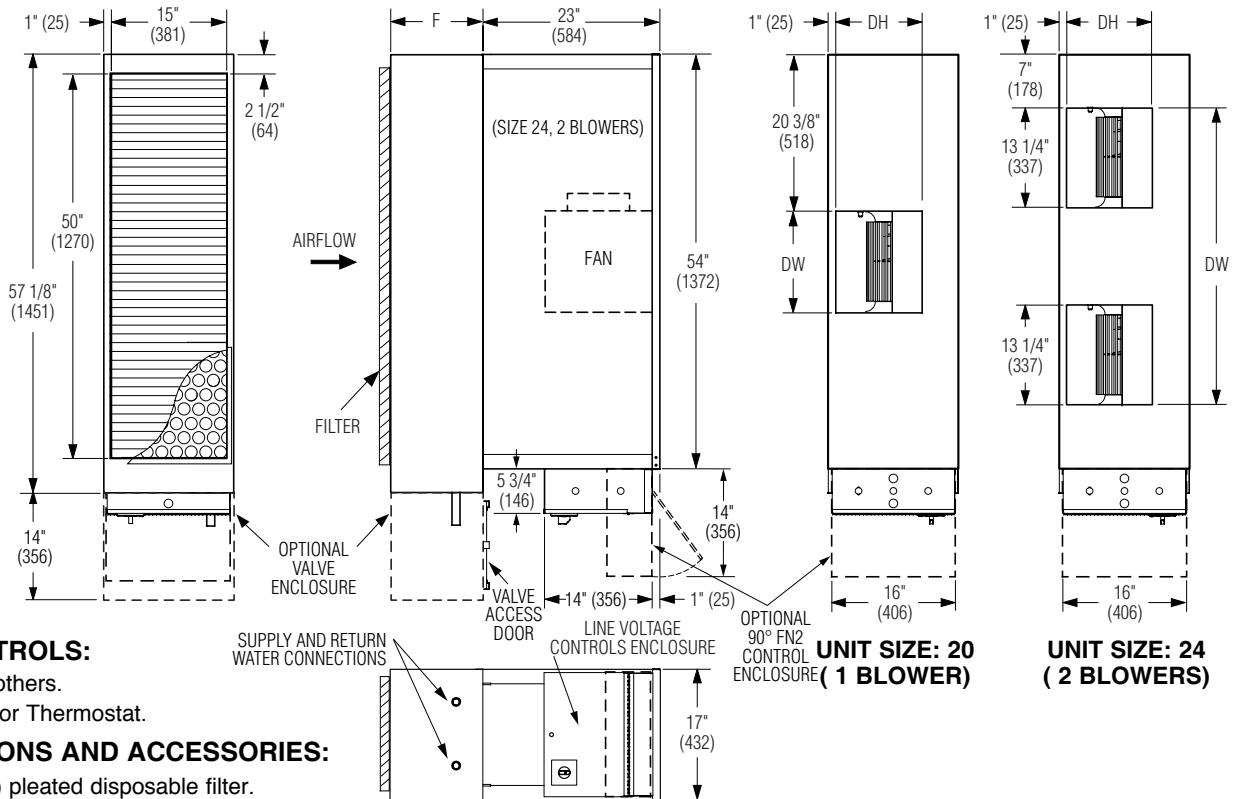
DRAWING NO.

8 - 9 - 22

35FH

4 - 11 - 22

35FH-8



CONTROLS:

- By others.
- Nailor Thermostat.

OPTIONS AND ACCESSORIES:

- 2" (51) pleated disposable filter.
 - MERV 8
 - MERV 13
- Factory assembled valve piping package.
 - components shipped loose
 - mounted in full protective enclosure
- Fiber-free liner.
- Perforated metal liner.
- Steri-liner.
- Steri-liner w/perf.
- 1" (25) fiberglass liner.
- Hanger brackets.
- LH controls location/configuration.
- Toggle disconnect switch.
- Ducted return filter rack connection (see separate submittal 35FH/37FH-FFR).
- Mixing Box (See separate submittal 35FH-MB).
- Outside Air Inlet (OAI) (see separate submittal 35FH-OAI).
- FN2 90° line voltage enclosure.
- FN3 Remote line voltage enclosure (see separate submittal FN3).
- Induced Air Silencer (see separate submittals 35FH-DSI and 35FH-DSIE).

Seismic Certification:

- SSI (Standard)
- OSHPD
- Special Features: _____

Dimensional Data

Unit Size	Nominal CFM (l/s)	F	Outlet Discharge DW x DH	Filter Size
20	2000 (944)	3, 4, 5 & 6 ROW COIL: 12 (305),	13 1/4 x 11 1/4 (337 x 286)	52 x 16 (1321 x 406)
24	2400 (1133)	7 & 8 ROW COIL: 14 (356)	39 1/4 x 11 1/4 (997 x 286)	

Electrical Data

Unit Size	Motor HP	EPIC ECM Motor FLA			
		120V	208V	240V	277V
20	*	9.6	6.3	6.1	6.0
24	*	11.8	7.9	7.8	7.5

* The EPIC ECM is a variable horsepower motor. Refer to Selectworks schedule for actual power consumption. FLA = Full load amperage. All motors are single phase/60 Hz.

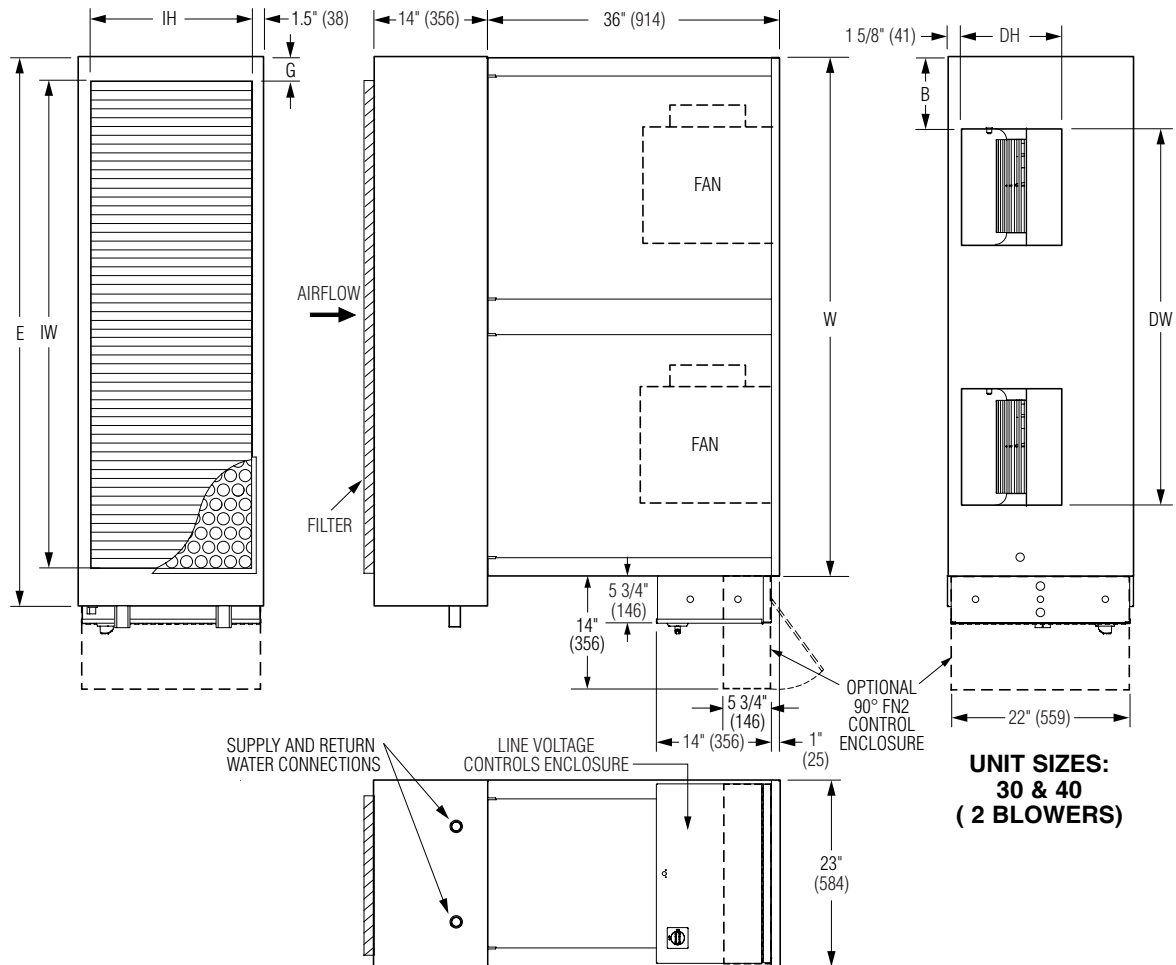
Coil O.D. Sweat Connections

Unit Size	Number of Rows	
	1 & 2	3
20 & 24	5/8	1 1/8



Intertek

SCHEDULE TYPE:				
PROJECT:				
ENGINEER:	DATE	B SERIES	SUPERSEDES	DRAWING NO.
CONTRACTOR:	8 - 9 - 22	35FH	4 - 11 - 22	35FH-8



**UNIT SIZES:
30 & 40
(2 BLOWERS)**

Dimensional Data

Unit Size	Nominal CFM (l/s)	W	E	G	B	Inlet IW x IH	Outlet Discharge DW x DH	Filter Size
30	3000 (1416)	54 (1372)	57 (1448)	2 3/8 (60)	7 (178)	50 x 20 (1270 x 508)	39 1/4 x 11 1/4 (997 x 286)	22 x 52 (559 x 1321)
40	4000 (1888)	64 (1626)	67 5/8 (1718)	2 7/8 (73)	8 5/16 (211)	60 x 20 (1524 x 508)	46 3/8 x 12 1/2 (1178 x 318)	22 x 62 (559 x 1575)

Electrical Data

Unit Size	Motor HP	EPIC ECM Motor FLA			
		120V	208V	240V	277V
30	*	12.6	8.7	8.4	8.0
40	*	19.4	12.5	11.9	11.6

Coil O.D. Sweat Connections

Unit Size	Number of Rows	
	1 & 2	3
30 & 40	7/8	1 3/8

* The EPIC ECM is a variable horsepower motor. Refer to Selectworks schedule for actual power consumption. FLA = Full load amperage. All motors are single phase/60 Hz.



SCHEDULE TYPE:		Page 3 of 3.			
PROJECT:		Dimensions are in inches (mm).			
ENGINEER:	DATE	B SERIES	SUPERSEDES	DRAWING NO.	
CONTRACTOR:	8 - 9 - 22	35FH	4 - 11 - 22	35FH-8	