

MODELS:

- 35FHZ**
Chilled/Hot Water (2-pipe).
- 35FHZW**
Chilled & Hot Water (4-pipe).
- 35FHW**
Hot Water Only (2-pipe).
- 35FHZE**
2 Pipe with Electric Heat.

NOTE:

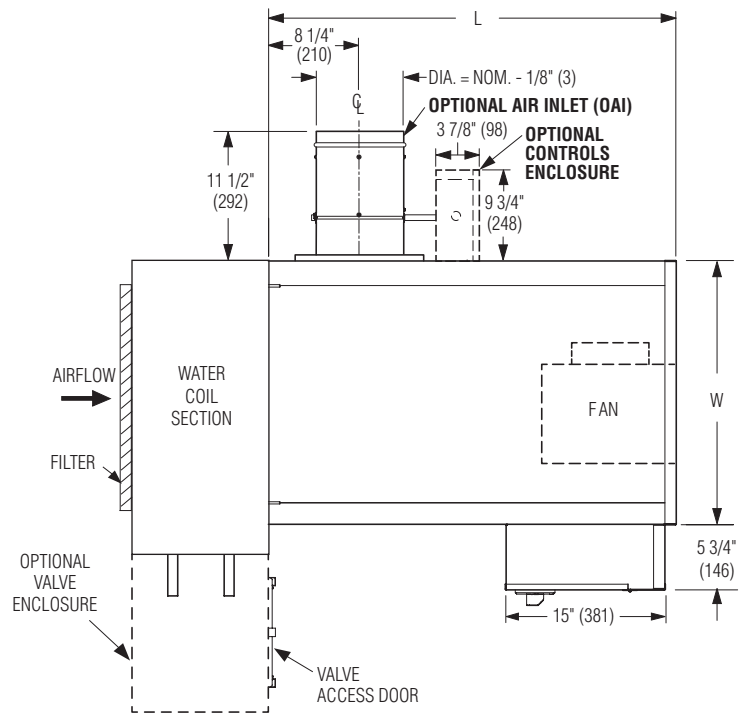
See appropriate submittal drawings 35FH-1 through 35FH-8 for full dimensional, electrical and construction details.

Standard Construction (OAI Inlet):

1. Casing: 20 ga. (1.0), corrosion-resistant steel with stiffening beads.
2. Blade: Two layers of 20 ga. (1.0), corrosion-resistant steel laminated together with a cross-linked polyethylene peripheral gasket for tight shut-off. 90° rotation, CW to close. Damper leakage is less than 1% of the terminal rated airflow at 3" w.g. (750 pa.) and less than 2% at 6" w.g. (1500 pa.) as tested in accordance with ANSI / ASHRAE Standard 130.
3. Bearings: Self-lubricating oilite bronze.
4. Drive Shaft/Axles: 1/2" (13) diameter plated steel, double-bolted to blades. Indicator mark on the end of the shaft to show damper position.
5. Multi-point averaging Diamond Flow Sensor: Aluminum construction. Supplied with brass balancing tees. See EC-IOM-FCK for associated K-factor(s).

OPTION:

- Full NEMA 1 type controls enclosure for field mounted controllers/actuators.
- Optional valve enclosure for unit sizes 4 – 24.



Dimensional Data

| Unit Size | Nominal CFM (l/s) | Available Outside Air Inlet (OAI) Dia. | W | L |
|-----------|-------------------|--|-----------|-------------|
| 4 | 400 (189) | 4, 5, 6 (102, 127, 152) | 23 (584) | 36 (914) |
| 6 | 600 (283) | | 23 (584) | |
| 8 | 800 (378) | | 23 (584) | |
| 10 | 1000 (472) | | 37 (940) | |
| 12 | 1200 (566) | 4, 5, 6, 8 (102, 127, 152, 203) | 37 (940) | |
| 14 | 1400 (661) | | 37 (940) | |
| 16 | 1600 (755) | | 37 (940) | |
| 18 | 1800 (849) | 4, 5, 6, 8, 10 (102, 127, 152, 203, 254) | 54 (1372) | |
| 20 | 2000 (944) | | 54 (1372) | |
| 24 | 2400 (1133) | | 54 (1372) | |
| 30 | 3000 (1416) | | 54 (1372) | |
| 40 | 4000 (1888) | 4, 5, 6, 8, 10, 12 (102, 127, 152, 203, 254, 305) | 64 (1626) | |



Intertek

SCHEDULE TYPE:

PROJECT:

ENGINEER:

CONTRACTOR:

Dimensions are in inches (mm).

| DATE | B SERIES | SUPERSEDES | DRAWING NO. |
|-------------|----------|-------------|-------------|
| 6 - 28 - 19 | 35FH | 8 - 10 - 18 | 35FH-OAI |