

- 20 ga. (1.00) galvanized steel construction.
- Round laminated 2 x 20 ga. (1.00) butterfly damper with peripheral gasket. 90° rotation. CCW to open.
- Backdraft damper mounted on fan discharge.
- Multi-point averaging Diamond Flow sensor. Supplied with balancing tees.
- Bottom access panels.
- Ultra-high efficiency ECM fan motor with overload protection. EPIC fan volume controller.
- Solid state fan speed controller with minimum voltage stop.
- 3/4" (19) dual density insulation, exposed edges coated to prevent air erosion, meets requirements of NFPA 90A and UL 181.
- Single point electrical and /or pneumatic main air connection.
- Discharge opening for flanged duct connection.
- Full primary air valve low voltage NEMA 1 type enclosure for factory mounted DDC and analog electronic controls.

**OPTIONS:**

### Digital Controls:

- ☐ Factory mounted (supplied by others)
- ☐ Field mounted (supplied by others)
- ☐ Nailor EZvav. See separate submittal.

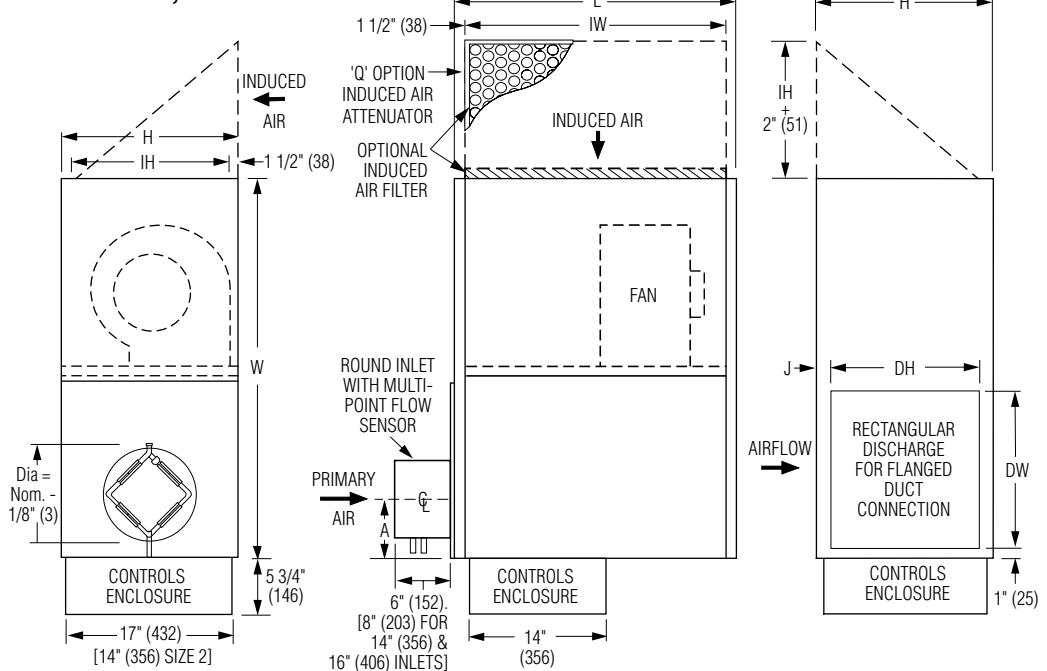
**Liner:**

- ☐ Steri-liner
- ☐ Steri-liner + Perforated metal
- ☐ Fiber-free
- ☐ Perforated metal
- ☐ Solid metal
- ☐ 1" (25) fiberglass

**Other:**

- ☐ Left-hand controls location
- ☐ Toggle disconnect switch
- ☐ Fan unit fusing
- ☐ 24/24V Isolation transformer
- ☐ Cross Flow Sensor
- ☐ 'Q' Option – Induced Air Inlet Attenuator (Top entry. Important: 6" (152) clearance required above unit).
- ☐ 1" (25) Throwaway filter
- ☐ 2" (51) MERV 8 filter
- ☐ Hanger brackets.

## Model 35N, Basic unit



## Dimensional Data

Unit Size	Inlet Size	W	H	L	J	Induced Air Inlet IW x IH	Outlet Discharge DW x DH	Filter Size
<b>2</b>	6, 8, 10, 12 (152, 203, 254, 305)	34 3/4 (883)	14 (356)	27 9/16 (700)	1 (25)	24 9/16 x 10 3/4 (624 x 273)	16 x 12 (406 x 305)	26 x 13 (660 x 330)
<b>3</b>	8, 10, 12, 14 (203, 254, 305, 356)	38 1/4 (972)	18 (457)	28 9/16 (725)	1 1/2 (38)	25 9/16 x 14 3/4 (649 x 375)	16 x 15 (406 x 381)	27 x 17 (686 x 432)
<b>5</b>	10, 12, 14 (254, 305, 356)	45 5/8 (1159)	18 (457)	34 1/2 (876)	1 1/2 (38)	31 1/2 x 14 3/4 (800 x 375)	24 x 15 (610 x 381)	33 x 17 (838 x 432)
<b>6</b>	12, 14, 16 (305, 356, 406)	50 3/4 (1289)	20 (508)	36 (914)	1 1/4 (32)	33 x 16 3/4 (838 x 426)	28 x 17 1/2 (711 x 445)	35 x 19 (889 x 483)

## Electrical Data

Unit Size	Motor H. P.	EPIC ECM Motor FLA <sup>†</sup>			
		120V	208V	240V	277V
2	*	3.9	2.2	2.2	1.8
3	*	6.9	3.9	3.9	3.5
5	*	11.9	6.8	6.8	6.1
6	*	13.7	7.9	7.9	6.7

\* The ECM is a variable horsepower motor. Refer to Selectworks Schedule.

FLA = Full load amperage

<sup>†</sup> EON motor series

- ☐ 1/4-turn fasteners (access panel)
- ☐ Duct tight enclosure seal
- ☐ Manual reset secondary outlet

Inlet Size	Dim. A
6	5 (127)
8	6 (152)
10	7 (178)
12	8 (203)
14	9 (229)
16	10 (254)

**Seismic Certification:**

- ☐ Seismic Source International (Standard)  
☐ HCAI (formerly OSHPD, California)  
☐ Special Features: \_\_\_\_\_.



**SCHEDULE TYPE:**

**PROJECT:**

**ENGINEER:**

**CONTRACTOR:**

DATE	B SERIES	SUPERSEDES	DRAWING NO.
- 25 - 25	3500	4 - 25 - 23	35N-3A



# FAN POWERED TERMINAL UNIT WITH ECM MOTOR PARALLEL FLOW • VARIABLE VOLUME HEAT ACCESSORIES MODELS: 35NW AND 35NE • UNIT SIZES 2 – 6

## ☐ Hot Water Coil Section Model 35NW

### Standard Features:

- Coil are mounted on unit discharge.
- 1/2" (13) copper tubes.
- Aluminum ripple fins.
- Sweat Connections: Size 2 and 3 one row, 1/2" (13) O.D. male solder. All others 7/8" (22) O.D. male solder.
- Bottom access panel for inspection and coil cleaning.
- Discharge opening for slip and drive connection.

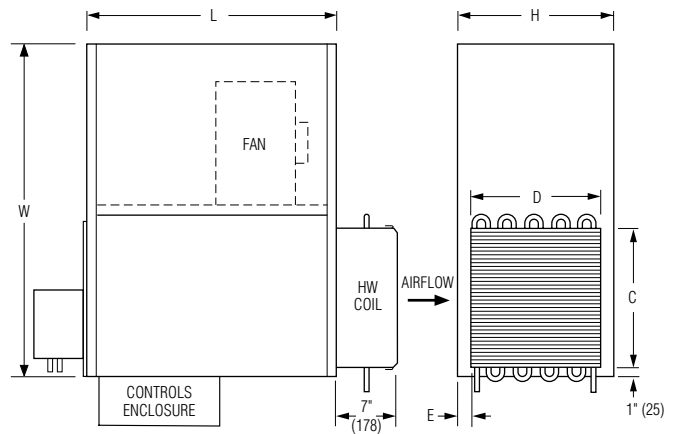
### Coil Rows:

- ☐ 1-Row ☐ 2-Row ☐ 3-Row

### Coil Hand Connections:

(Looking in direction of airflow).

- ☐ Right hand (illustrated). Standard.
- ☐ Left hand (terminals are inverted / built as mirror image). Optional. Connections must be selected same hand as controls enclosure location.



Unit Size	Outlet Duct Size C x D	W	H	L	E
2	16 x 12 1/2 (406 x 318)	34 3/4 (883)	14 (356)	27 9/16 (700)	3/4 (19)
3	16 x 15 (406 x 381)	38 1/4 (972)	18 (457)	28 9/16 (725)	1 1/2 (38)
5	24 x 15 (610 x 381)	45 5/8 (1159)	18 (457)	34 1/2 (876)	1 1/2 (38)
6	28 x 17 1/2 (711 x 445)	50 3/4 (1289)	20 (508)	36 (914)	1 1/4 (32)

## ☐ Electric Coil Section Model 35NE

### Standard Features:

- Coil installed on unit discharge.
- Insulated coil element wrapper.
- Automatic reset high limit cut-outs (one per element).
- Single point electrical connection for entire terminal unit.
- Positive pressure airflow switch.
- Flanged outlet duct connection.
- Class A 80/20 Ni/Cr wire.
- Terminal unit with coil is ETL Listed as an assembly.
- Controls mounted as standard on RH side as shown. Terminals ordered with LH controls (optional) are built as mirror image.

### Voltage:

Single phase, 60 Hz.

- ☐ 120V ☐ 208V ☐ 240V ☐ 277V

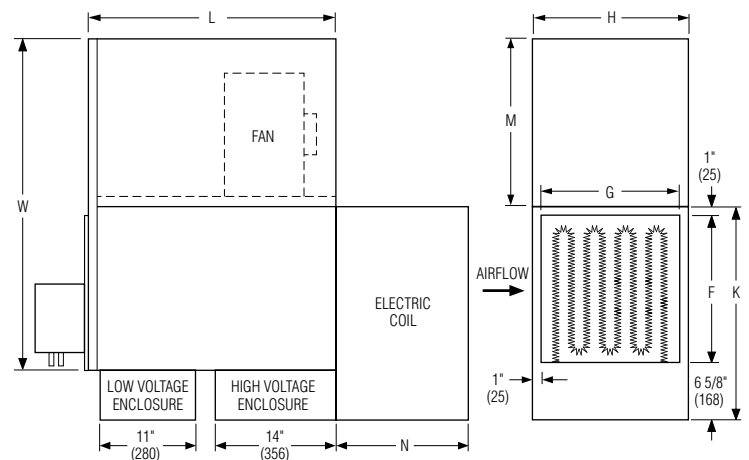
Three phase, 60 Hz.

- ☐ 208V ☐ 480V (4 wire wye).

- ☐ 600V (dual point connection). ☐ \_\_\_\_\_

### Options:

- ☐ Toggle disconnect switch (includes fan).
- ☐ Door interlock disconnect switch.
- ☐ SCR control.
- ☐ SCR control with discharge temperature control.
- ☐ Mercury contactors.
- ☐ Power circuit fusing.
- ☐ Dust tight construction.
- ☐ Manual reset secondary thermal cut out.



Unit Size	Outlet Duct Size F x G	K	H	M	N
2	17 x 12 (432 x 305)	24 5/8 (626)	14 (356)	15 7/8 (403)	12 1/2 (318)
3	17 x 16 (432 x 406)	24 5/8 (626)	18 (457)	19 3/8 (492)	15 1/4 (387)
5	25 x 16 (635 x 406)	32 5/8 (829)	18 (457)	18 3/4 (476)	15 1/4 (387)
6	29 x 18 (737 x 457)	36 5/8 (930)	20 (508)	19 7/8 (505)	15 1/4 (387)

Page 2 of 2.

Dimensions are in inches (mm).

SCHEDULE TYPE:

PROJECT:

ENGINEER:

CONTRACTOR:

DATE

B SERIES

SUPERSEDES

DRAWING NO.

9 - 25 - 25

3500

4 - 25 - 23

35N-3A