



**LOW PROFILE VERTICAL HI-RISE FAN COIL UNITS (SHORT CABINET) • 2 PIPE OR 4 PIPE WITH EPIC ECM, 3-SPEED ECM OR 3-SPEED PSC MOTOR • TYPE C CONCEALED (STAND-ALONE) MODEL SERIES: 39L • UNIT SIZES 3 – 21**

**MODELS:**

- 39LZ** Chilled/Hot Water (2-pipe).
- 39LZE** Chilled Water & Electric Heat (2-pipe).
- 39LZW** Chilled & Hot Water (4-pipe).
- 39LW** Hot Water (2-pipe).

**STANDARD FEATURES:**

- 20 ga. (1.0) galvanized steel casing.
- 1/2" (13), 2 lb/cu.ft. density water repellent fiberglass insulation.
- 1" (25) throwaway filter.
- Galvanized steel insulated drain pan.
- Factory installed P-Trap.
- Double deflection supply grille(s), see drawing 39VH/L-3.
- Front return panel (not shown, see drawing 39L-5) with AW Appliance White powder coat finish.
- Factory installed piping package(s).

**OPTIONS:**

- 1/2" (13) Fiber-Free liner.
- 1/2" (13) Steri-liner.
- 1" (25) MERV 8 pleated filter.
- Full riser chase.
- Factory mounted risers.
- Electric heat.
- Stainless steel drain pan.
- Drain pan float switch.
- Toggle disconnect switch.
- Outside air damper.
- Thermostat /Controls (by Engineered Comfort).
- Special features: \_\_\_\_\_

**WATER COIL:**

- 1/2" (13) Copper tubes with aluminum ripple fins.
- Manual air vents.
- Stainless steel flexible hose connections.

**Coil Options:**

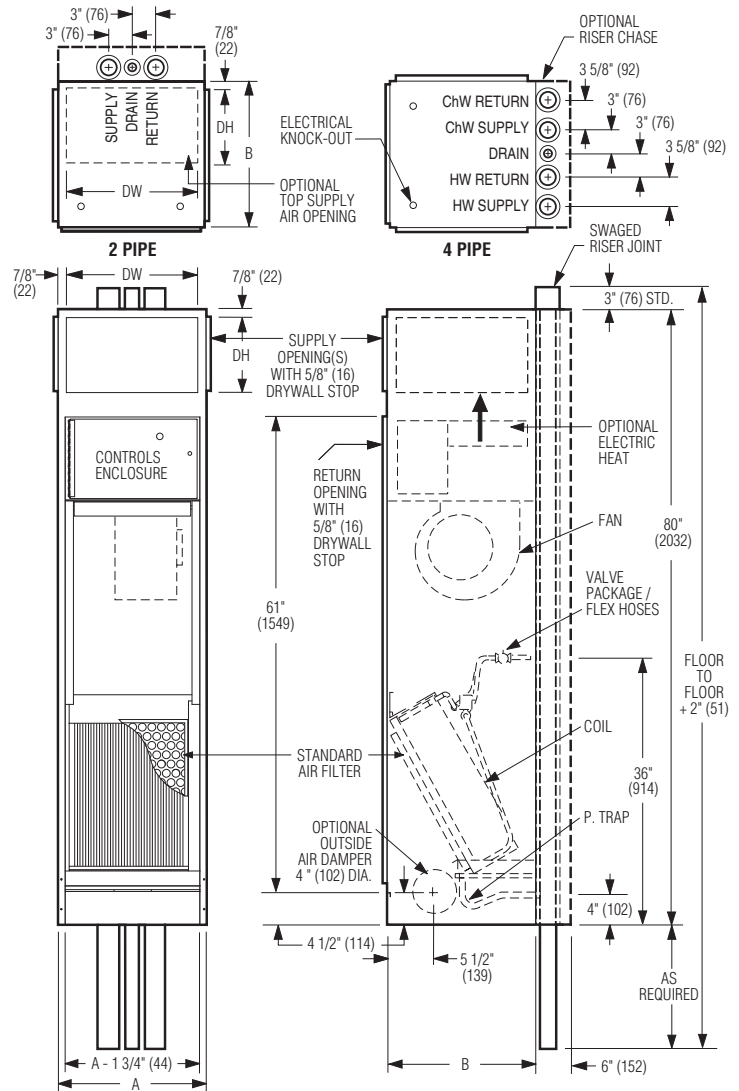
- 2 Pipe system:
- 3 Row C/HW.
  - 4 Row C/HW.
  - 1 Row HW Only.
  - 2 Row HW Only.
  - 3 Row HW Only.
- 4 Pipe system:
- 3/1 CW/HW Rows.
  - 3/2 CW/HW Rows.
  - 4/1 CW/HW Rows.

**Dimensional Data**

Unit Size	Footprint A x B	Supply Grille Nominal DW x DH	Filter Size
3, 5, 6	18 x 18 (457 x 457)	16 x 10 (406 x 254)	13 1/8 x 16 3/4 (333 x 425)
8, 10	20 x 20 (508 x 508)	18 x 10 (457 x 254)	15 1/2 x 24 (394 x 610)
12, 15	24 x 24 (610 x 610)	22 x 10 (559 x 254)	18 1/2 x 29 (470 x 737)
19, 21	30 x 24 (762 x 610)	28 x 10 (711 x 254)	24 1/2 x 29 (622 x 737)

**NOTES:**

1. Wiring from electrical entry knock-out to controls enclosure is furnished and field installed by others.
2. Risers available from 3/4" (19) to 3" (76) dia. with either 1/2" (13) or 3/4" (19) thick insulation.
3. Max. riser length is 112" (2845), 92" (2337) min.
4. Back riser location shown. See drawing 39VH/L-1 for available riser and discharge grille unit configurations.
5. Factory mounted risers shown. See drawing 39VH/L-2 for shipped loose riser details.



Intertek



**SCHEDULE TYPE:**

**PROJECT:**

**ENGINEER:**

**CONTRACTOR:**

**DATE**

**B SERIES**

**SUPERSEDES**

**DRAWING NO.**

8 - 5 - 16

39

11 - 15 - 11

39L-1



**LOW PROFILE VERTICAL HI-RISE FAN COIL UNITS**  
 (SHORT CABINET) • 2 PIPE OR 4 PIPE  
**WITH EPIC ECM, 3-SPEED ECM OR 3-SPEED PSC**  
**MOTOR • TYPE C CONCEALED (STAND-ALONE)**  
**MODEL SERIES: 39L • UNIT SIZES 3 – 21**

**Electrical Data**

Unit Size	EPIC ECM Motor FLA					3-Speed ECM FLA					3-Speed PSC Motor FLA				
	Motor HP	120V	208V	240V	277V	Motor HP	120V	208V	240V	277V	Motor HP	120V	208V	240V	277V
3	*	—	—	—	—	1/3	1.6	1.1	1.1	1.0	1/10	1.8	0.7	0.7	0.6
5	*	—	—	—	—	1/3	2.0	1.4	1.4	1.2	1/10	1.9	0.7	0.7	0.6
6	*	3.6	2.3	2.2	2.0	1/3	2.5	1.8	1.7	1.6	1/6	2.7	1.1	1.1	0.9
8	*	—	—	—	—	1/3	3.4	2.4	2.3	2.1	1/6	2.7	1.1	1.1	0.9
10	*	6.8	4.0	4.3	3.6	1/2	4.7	3.3	3.2	2.9	1/3	4.7	2.0	2.0	1.8
12	*	—	—	—	—	3/4	5.3	3.7	3.7	3.3	1/3	5.5	2.6	2.6	2.1
15	*	8.7	5.8	5.4	4.6	3/4	8.0	5.6	5.5	5.0	1/2	3.5	3.8	3.8	2.8
19	*	12.7	8.5	7.8	6.5	1	11.9	8.3	8.2	7.4	3/4	4.3	5.1	5.1	4.1
21	*	—	—	—	—	1	12.5	8.8	8.6	7.8	3/4	4.2	5.1	5.1	4.1

\* The EPIC ECM is a variable horsepower motor. Refer to Selectworks schedule for actual power consumption.  
 FLA = Full load amperage (high speed fan). All motors are single phase/60 Hz.

**MOTOR OPTIONS:**

- EPIC ECM. Ultra-high efficiency fan motor with overload protection. EPIC fan volume controller, 0–10 Vdc.
- 3-Speed ECM. Ultra-high efficiency fan motor with overload protection.
- 3-Speed PSC Motor. Energy efficient fan motor with overload protection.

**ELECTRIC HEAT:**

- Class 'A' 80/20 Ni./Cr. wire.
- Automatic reset high limit cut-outs (one per element).
- Magnetic contactors per stage.

**Voltage:**

Single phase, 60 Hz.

- 120V     208V     240V     277V

**Electric heat options:**

- Door interlocking disconnect switch.
- Main fusing.
- Quiet contactors.
- Manual reset secondary Hi-limit thermal cut out.
- UV light w/safety switch.

<b>SCHEDULE TYPE:</b>				
<b>PROJECT:</b>				
<b>ENGINEER:</b>	<b>DATE</b>	<b>B SERIES</b>	<b>SUPERSEDES</b>	<b>DRAWING NO.</b>
<b>CONTRACTOR:</b>	8 - 5 - 16	39	11 - 15 - 11	39L-1