

### MODELS:

- 39VHZ** Chilled/Hot Water (2-pipe).
- 39VHZE** Chilled Water & Electric Heat (2-pipe).
- 39VHZW** Chilled & Hot Water (4-pipe).
- 39VHW** Hot Water (2-pipe).

### STANDARD FEATURES:

- 20 ga. (1.0) galvanized steel casing.
- 1/2" (13), 2 lb/cu.ft. density water repellent fiberglass insulation.
- 1" (25) throwaway filter.
- Galvanized steel insulated drain pan.
- Factory installed P-Trap.
- Double deflection supply grille(s).
- Front return panel (not shown, see drawing 39VH-6) with AW Appliance White powder coat finish.
- Factory installed piping package(s).

### OPTIONS:

- 1/2" (13) Fiber-Free liner.
- 1/2" (13) Steri-liner.
- 1" (25) MERV 8 pleated filter.
- Full riser chase.
- Electric heat.
- Stainless steel drain pan.
- Drain pan float switch.
- Toggle disconnect switch.
- Outside air damper.
- Thermostat /Controls (by Engineered Comfort).
- Special features: \_\_\_\_\_

### WATER COIL:

- 1/2" (13) Copper tubes with aluminum ripple fins.
- Manual air vents.
- Stainless steel flexible hose connections.

### Coil Options:

2 Pipe system:

- 3 Row C/HW.
- 4 Row C/HW.
- 1 Row HW Only.
- 2 Row HW Only.
- 3 Row HW Only.

4 Pipe system:

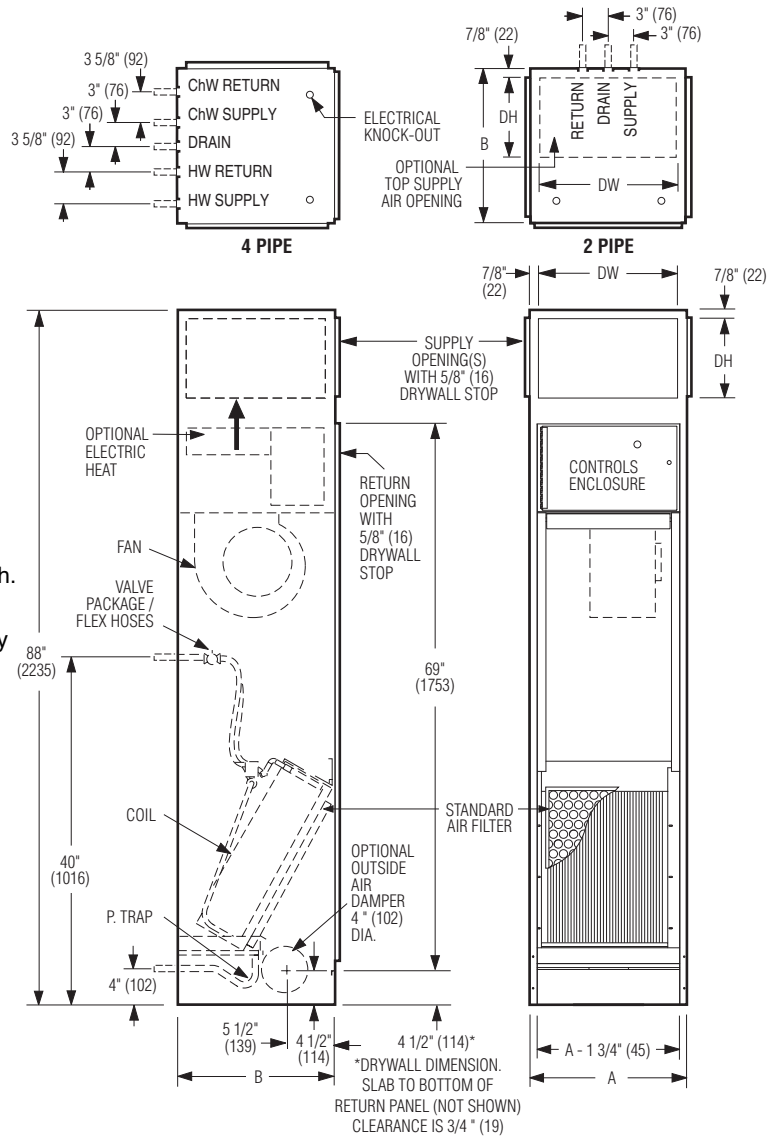
- 3/1 CW/HW Rows.
- 3/2 CW/HW Rows.
- 4/1 CW/HW Rows.

### Dimensional Data

Unit Size	Footprint A x B	Supply Grille Nominal DW x DH	Filter Size
3, 5, 6	18 x 18 (457 x 457)	16 x 10 (406 x 254)	13 1/8 x 16 3/4 (333 x 425)
8, 10	20 x 20 (508 x 508)	18 x 10 (457 x 254)	15 1/2 x 24 (394 x 610)
12, 15	24 x 24 (610 x 610)	22 x 10 (559 x 254)	18 1/2 x 29 (470 x 737)
19, 21	30 x 24 (762 x 610)	28 x 10 (711 x 254)	24 1/2 x 29 (622 x 737)

### NOTES:

1. Wiring from electrical entry knock-out to controls enclosure is furnished and field installed by others.
2. Risers available from 3/4" (19) to 3" (76) dia. with either 1/2" (13) or 3/4" (19) thick insulation.
3. Max. riser length is 120" (3048), 100" (2540) min.
4. Back riser connection location shown. See drawing 39VH/L-1 for available riser and discharge grille unit configurations.
5. All piping and insulation between slave unit and risers is furnished and field installed by others.
6. All coil and drain connections are retracted internally for shipping.
7. Coil connections are 5/8" (16) O.D. sweat. Drain P-Trap is designed to accept 7/8" (22) O.D. copper tube.
8. Slave unit riser connections are built "mirror image" to master unit.
9. Slave units are furnished with factory installed shut-off valves and field connection tubes, unless master unit risers are shipped loose. See drawing 39VH/L-2 for shipped loose riser details.



Intertek



### SCHEDULE TYPE:

### PROJECT:

### ENGINEER:

### CONTRACTOR:

Page 1 of 2.  
Dimensions are in inches (mm).

DATE	B SERIES	SUPERSEDES	DRAWING NO.
8 - 5 - 16	39	11 - 15 - 11	39VH-5



**VERTICAL HI-RISE FAN COIL UNITS WITH  
EPIC ECM, 3-SPEED ECM OR 3-SPEED PSC MOTOR  
TYPE S CONCEALED SLAVE  
2 PIPE OR 4 PIPE  
MODEL SERIES: 39VH • UNIT SIZES 3 – 21**

**Electrical Data**

Unit Size	EPIC ECM Motor FLA					3-Speed ECM FLA					3-Speed PSC Motor FLA				
	Motor HP	120V	208V	240V	277V	Motor HP	120V	208V	240V	277V	Motor HP	120V	208V	240V	277V
3	*	—	—	—	—	1/3	1.6	1.1	1.1	1.0	1/10	1.8	0.7	0.7	0.6
5	*	—	—	—	—	1/3	2.0	1.4	1.4	1.2	1/10	1.9	0.7	0.7	0.6
6	*	3.6	2.3	2.2	2.0	1/3	2.5	1.8	1.7	1.6	1/6	2.7	1.1	1.1	0.9
8	*	—	—	—	—	1/3	3.4	2.4	2.3	2.1	1/6	2.7	1.1	1.1	0.9
10	*	6.8	4.0	4.3	3.6	1/2	4.7	3.3	3.2	2.9	1/3	4.7	2.0	2.0	1.8
12	*	—	—	—	—	3/4	5.3	3.7	3.7	3.3	1/3	5.5	2.6	2.6	2.1
15	*	8.7	5.8	5.4	4.6	3/4	8.0	5.6	5.5	5.0	1/2	3.5	3.8	3.8	2.8
19	*	12.7	8.5	7.8	6.5	1	11.9	8.3	8.2	7.4	3/4	4.3	5.1	5.1	4.1
21	*	—	—	—	—	1	12.5	8.8	8.6	7.8	3/4	4.2	5.1	5.1	4.1

\* The EPIC ECM is a variable horsepower motor. Refer to Selectworks schedule for actual power consumption.  
FLA = Full load amperage (high speed fan). All motors are single phase/60 Hz.

**MOTOR OPTIONS:**

- EPIC ECM. Ultra-high efficiency fan motor with overload protection. EPIC fan volume controller, 0–10 Vdc.
- 3-Speed ECM. Ultra-high efficiency fan motor with overload protection.
- 3-Speed PSC Motor. Energy efficient fan motor with overload protection.

**ELECTRIC HEAT:**

- Class 'A' 80/20 Ni./Cr. wire.
- Automatic reset high limit cut-outs (one per element).
- Magnetic contactors per stage.

**Voltage:**

Single phase, 60 Hz.

- 120V     208V     240V     277V

**Electric heat options:**

- Door interlocking disconnect switch.
- Main fusing.
- Quiet contactors.
- Manual reset secondary Hi-limit thermal cut out.
- UV light w/safety switch.

<b>SCHEDULE TYPE:</b>		Page 2 of 2.			
<b>PROJECT:</b>		Dimensions are in inches (mm).			
<b>ENGINEER:</b>	<b>DATE</b>	<b>B SERIES</b>	<b>SUPERSEDES</b>	<b>DRAWING NO.</b>	
<b>CONTRACTOR:</b>	8 - 5 - 16	39	11 - 15 - 11	39VH-5	