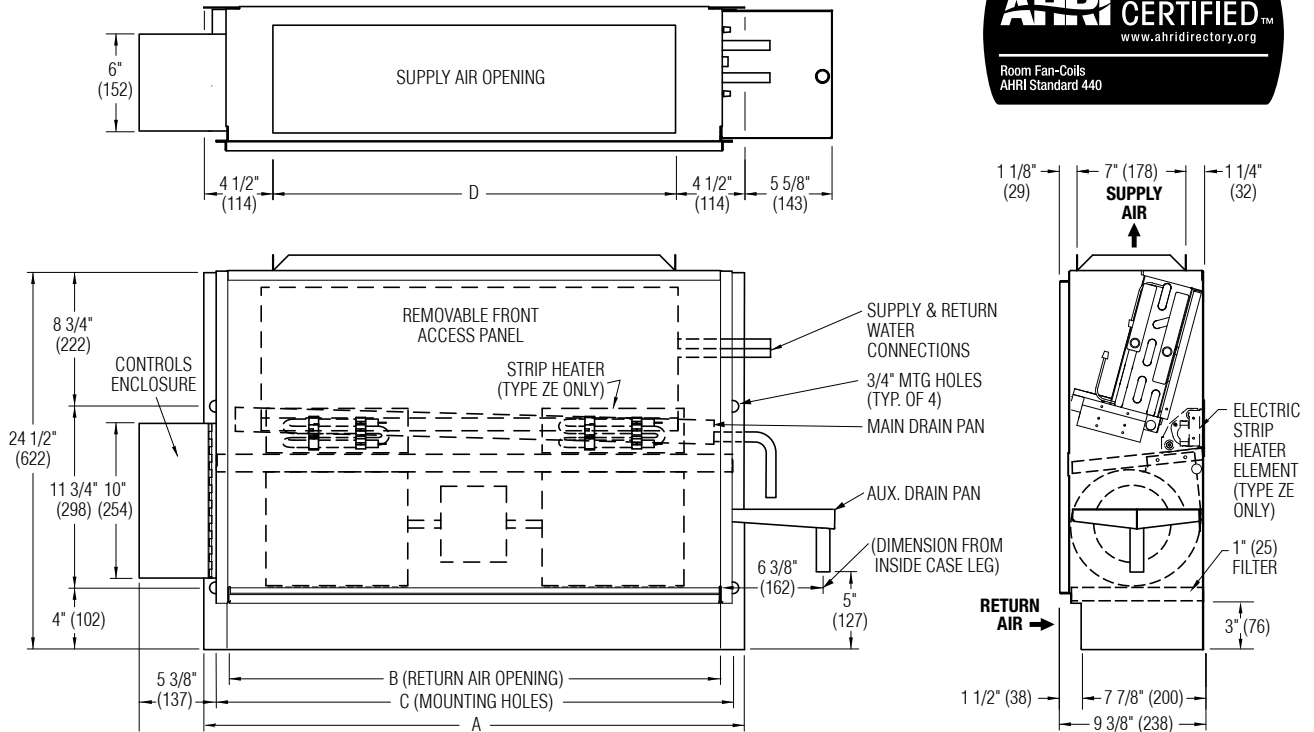




**VERTICAL FLOOR FAN COIL UNITS
 CONCEALED UNIT • TOP SUPPLY
 PROPORTIONAL ECM, 3-SPEED ECM OR PSC MOTOR
 2 & 4 PIPE COOLING / HEATING
 MODEL: 41VC TYPE Z, ZW AND ZE**



Dimensional Data

| Unit Size | Nominal CFM (l/s) | A | B | C | D | Filter Size |
|-----------|-------------------|-----------|---------------|---------------|-----------|-------------------------|
| 3 | 300 (142) | 29 (737) | 25 7/8 (657) | 27 1/2 (699) | 20 (508) | 7 1/2 x 26 (191 x 660) |
| 4 | 400 (189) | 35 (889) | 31 7/8 (810) | 33 1/2 (851) | 26 (660) | 7 1/2 x 32 (191 x 813) |
| 6 | 600 (283) | 45 (1143) | 41 7/8 (1064) | 43 1/2 (1105) | 36 (914) | 7 1/2 x 42 (191 x 1067) |
| 8 | 800 (378) | 47 (1194) | 43 7/8 (1114) | 45 1/2 (1156) | 38 (965) | 7 1/2 x 44 (191 x 1118) |
| 10 | 1000 (472) | 61 (1549) | 57 7/8 (1470) | 59 1/2 (1511) | 52 (1321) | 7 1/2 x 58 (191 x 1473) |
| 12 | 1200 (566) | 69 (1753) | 65 7/8 (1673) | 67 1/2 (1715) | 60 (1524) | 7 1/2 x 66 (191 x 1676) |



Electrical Data

| Unit Size | Fan Qty. | Proportional ECM Motor FLA | | | | | 3-Speed ECM Motor FLA | | | | | 3-Speed PSC Motor FLA | | | | |
|-----------|----------|----------------------------|------|------|------|------|-----------------------|------|------|------|------|-----------------------|------|------|------|------|
| | | Motor HP | 120V | 208V | 240V | 277V | Motor HP | 120V | 208V | 240V | 277V | Motor HP | 120V | 208V | 240V | 277V |
| 3 | 1 | 1/4 | 1.1 | 0.7 | 0.7 | 0.7 | 1/8 | 1.1 | 0.7 | 0.7 | 0.7 | 1/15 | 1.0 | 0.5 | 0.5 | 0.5 |
| 4 | 2 | 1/4 | 1.0 | 0.7 | 0.7 | 0.7 | 1/8 | 1.0 | 0.7 | 0.7 | 0.7 | 1/15 | 1.1 | 0.8 | 0.5 | 0.9 |
| 6 | 2 | 1/4 | 1.8 | 1.3 | 1.3 | 1.3 | 1/4 | 1.8 | 1.3 | 1.3 | 1.3 | 1/6 | 1.9 | 1.0 | 1.0 | 1.0 |
| 8 | 2 | 1/4 | 2.2 | 1.5 | 1.4 | 1.3 | 1/4 | 2.2 | 1.5 | 1.4 | 1.3 | 1/6 | 2.0 | 1.0 | 1.1 | 1.1 |
| 10 | 3 | 2 @ 1/4 | 2.6 | 1.8 | 1.7 | 1.7 | 2 - 1/8, 1/4 | 2.6 | 1.8 | 1.7 | 1.7 | 2 - 1/6, 1/15 | 3.2 | 1.9 | 2.0 | 1.7 |
| 12 | 4 | 2 @ 1/4 | 3.0 | 2.2 | 2.0 | 2.1 | 2 @ 1/4 | 3.0 | 2.2 | 2.0 | 2.1 | 2 @ 1/6 | 3.5 | 1.8 | 1.9 | 1.8 |

FLA = Full load amperage (High Fan Speed). All motors are single phase/60 Hz.

| | | | | | |
|-----------------------|-------------|--|-------------------|--------------------|--|
| SCHEDULE TYPE: | | Page 1 of 2. Dimensions are in inches (mm). | | | |
| PROJECT: | | | | | |
| ENGINEER: | DATE | B SERIES | SUPERSEDES | DRAWING NO. | |
| CONTRACTOR: | 1 - 20 - 20 | 41 | 11 - 2 - 15 | 41VC | |



**VERTICAL FLOOR FAN COIL UNITS
 CONCEALED UNIT • TOP SUPPLY
 PROPORTIONAL ECM, 3-SPEED ECM OR PSC MOTOR
 2 & 4 PIPE COOLING / HEATING
 MODEL: 41VC TYPE Z, ZW AND ZE**

TYPE:

- Z** Chilled/Hot Water (2-pipe system)
Coil Options:
 - 2 Row C/HW
 - 3 Row C/HW
 - 4 Row C/HW

- ZW** Chilled & Hot Water (4-pipe system)
Coil Options:
 - 2/1 CW/HW Rows
 - 3/1 CW/HW Rows
 - 4/1 CW/HW Rows
 - 2/2 CW/HW Rows
 - 3/2 CW/HW Rows

- ZE** Chilled/Hot Water & Electric Heat (2-pipe system)
Coil Options:
 - 2 Row C/HW
 - 3 Row C/HW
 - 4 Row C/HW

STANDARD FEATURES:

- Galvanized steel casing.
- Top supply with 1" (25) duct collar.
- 1/2" (13) dual density insulation, exposed edges coated to prevent air erosion. Meets the requirements of NFPA 90A and UL 181.
- Single point electrical connection.
- 1" (25) throwaway filter.
- Standard controls enclosure is mounted on side opposite coil connections.

MOTOR OPTIONS:

- Ultra-energy efficient proportional ECM fan motor(s) with thermal overload protection.
- Energy efficient 3-speed ECM fan motor(s) with thermal overload protection.
- 3-speed PSC fan motor(s) with thermal overload protection.

WATER COIL SECTION:

- 1/2" (12.7) copper tubes with aluminum ripple fins.
- Cooling coils include a foam insulated, galvanized steel sloped main and aux. drain pan with 7/8" (22.2) O.D. drain connection.
- Right hand unit / coil connection as shown is standard. Left hand is opposite.
- Manual air vents.
- Sweat Connections: All 5/8" (15.9) O.D. male solder.

ELECTRIC HEAT:

- High grade resistance elements mounted directly in front of fan outlets.
- Automatic reset high limit cut-outs (one per element).
- Single point power connection Voltage (single phase, 60 Hz):
 - 120V 208V
 - 240V 277V

OPTIONS AND ACCESSORIES:

- Foil face fiberglass liner.
- Closed cell foam liner.
- 1" (25) MERV 8 pleated filter.
- Left hand unit/coil connection.
- Toggle disconnect switch.
- Drain pan float switch.
- Factory assembled valve piping package (ships loose).
- Stainless steel drain pan.
- Double deflection supply grille.
- Linear bar supply grille.

| | | | | | |
|-----------------------|-------------|--------------------------------|-------------------|--------------------|--|
| SCHEDULE TYPE: | | Page 2 of 2. | | | |
| PROJECT: | | Dimensions are in inches (mm). | | | |
| ENGINEER: | DATE | B SERIES | SUPERSEDES | DRAWING NO. | |
| CONTRACTOR: | 1 - 20 - 20 | 41 | 11 - 2 - 15 | 41VC | |