



**LIGHT TROFFER DIFFUSER**  
**SUPPLY • DOUBLE SIDE (SADDLE)**  
**MODEL SERIES: 5420**

**DESCRIPTION:**

- Standard design is for use with flush slot type light troffers and fits most models.
- Custom fabrication available to suit individual light troffer designs.
- Adjustable piano-type hinge pattern controllers.
- Top inlet or low profile side inlet models.
- Option available for regressed slot light troffers.
- Inlet collars are sized for nominal duct connection.
- Available with adjustable telescopic cross-over for field sizing to suit light troffer (low profile models only).
- Units are shipped knocked-down for field assembly.

**STANDARD CONSTRUCTION:**

**MATERIAL:** 22 ga. corrosion-resistant steel. Gasketed cross-over (saddle) secured by four #8 self-tapping sheet metal screws per side.

**FINISH:** BK Black on exposed surfaces.

**INLET SELECTION:**

- |  |  |
|--|--|
| Side Inlet                                 | Top Inlet                                  |
| <input type="checkbox"/> S4 4" (102) Round | <input type="checkbox"/> T4 4" (102) Round |
| <input type="checkbox"/> S5 5" (127) Oval  | <input type="checkbox"/> T5 5" (127) Round |
| <input type="checkbox"/> S6 6" (152) Oval  | <input type="checkbox"/> T6 6" (152) Round |
| <input type="checkbox"/> S8 8" (203) Oval  | <input type="checkbox"/> T7 7" (178) Round |
|  | <input type="checkbox"/> T8 8" (203) Round |

**SPECIFY:**

'B' dimension (always required unless TE option specified) \_\_\_\_\_.

'A' dimension (if non-standard) \_\_\_\_\_.

**OPTIONS:**

- IN Internal insulation
- EX External foil back insulation
- HC High clearance model
- RS Regressed slot light fixture
- TE Telescopic adjustable cross-over (side only)
- ID Inlet damper (side only)

**SPECIAL FEATURES:**

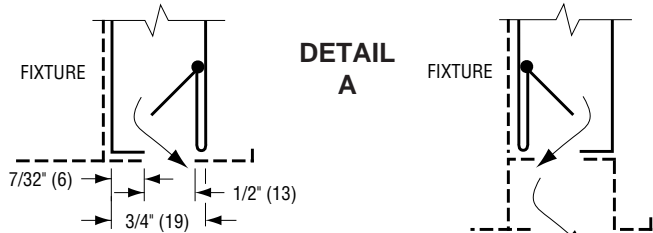
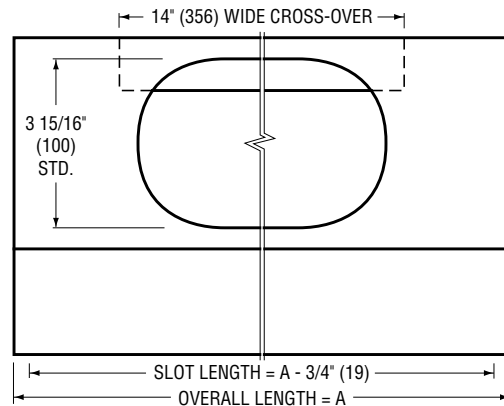
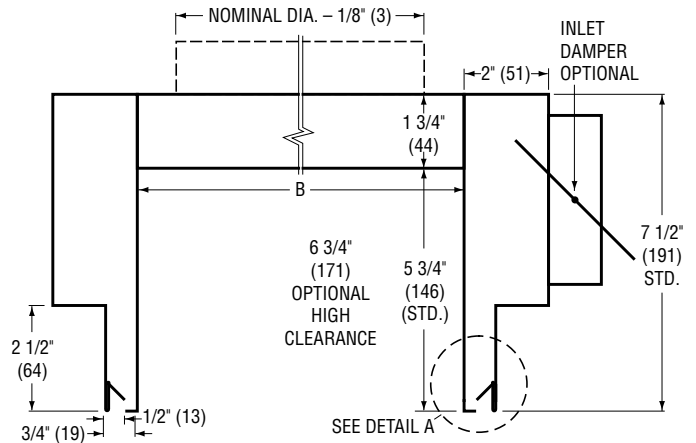
Specify \_\_\_\_\_.

**NOTE:**

The light troffer manufacturer should provide an approved fully dimensioned drawing to ensure compatibility. In some cases, a sample light fixture will be required to be sent to the factory.

**TE TELESCOPIC OPTION:**

UNIT WIDTH	'B' DIM. ADJUSTMENT
20" (500)	15" - 18" (381 - 457)
24" (600)	19" - 22" (483 - 559)
30" (750)	25" - 28" (635 - 711)
36" (900)	31" - 34" (787 - 864)



**STANDARD MODEL**

**REGRESSED SLOT OPTION**  
 (Pattern controller and horizontal lip reversed)

**STANDARD DIMENSIONAL DATA:**

TROFFER SIZE (CEILING MODULE)			
IMPERIAL MODULES (INCHES)		METRIC MODULES (MM)	
FIXTURE SIZE W x L	A	FIXTURE SIZE W x L	A
12 x 48	41 1/2	300 x 1200	1054
20 x 60	41 1/2	500 x 1500	1054
24 x 24	17 1/2	600 x 600	445
24 x 48	41 1/2	600 x 1200	1054
30 x 30	23 1/2	750 x 750	597
36 x 36	25 3/4	900 x 900	654

**SCHEDULE TYPE:**

**PROJECT:**

**ENGINEER:**

**CONTRACTOR:**

Dimensions are in inches (mm).

**DATE**

**B SERIES**

**SUPERSEDES**

**DRAWING NO.**

2 - 26 - 13

5400

22 - 6 - 01R

5400-2