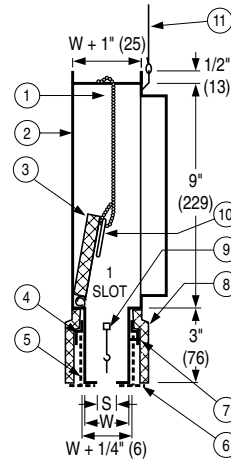
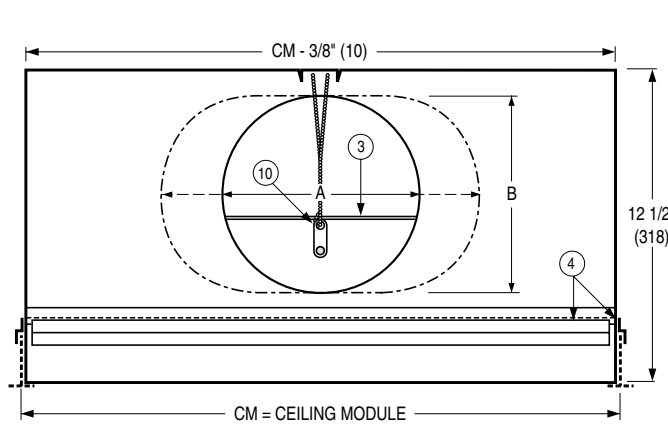




**FIRE RATED PLENUM SLOT DIFFUSER  
ADJUSTABLE 'WIPER BLADE' PATTERN  
CONTROLLERS • 3 HR. RATING  
MODELS: 5550WB, 5575WB, 5510WB, 5515WB**



- ☐ **MODEL 5550WB**  
1/2" (13) Slot width
- ☐ **MODEL 5575WB**  
3/4" (19) Slot width
- ☐ **MODEL 5510WB**  
1" (25) Slot width
- ☐ **MODEL 5515WB**  
1 1/2" (38) Slot width

**DESCRIPTION:**

- The 5500 Series is a UL Classified fire rated Air Terminal Unit listed in Underwriters Laboratories Fire Resistance Directory. All diffusers are classified for use in UL/ULC restrained or unrestrained floor/ceiling and or roof/ceiling assemblies which incorporate an exposed grid suspended ceiling (lay-in T-bar) with up to a 3 hour rating. For details of fire rated assemblies, see the current UL or ULC Fire Resistance Directory.
- Construction: Corrosion resistant steel. U.L. Listed fusible link. 165°F (74°C) is standard.
- Finish: Black pattern controllers and exposed surfaces. AW Appliance White on center T-Bars.
- Extruded aluminum pattern controllers provide a tight horizontal ceiling pattern. An excellent choice for VAV systems.
- Standard nominal lengths: 20", 24", 36", 48" and 60" (500, 600, 900, 1200 and 1500). Standard inlet sizes: 5", 6", 7", 8" (127, 152, 178, 203) are round. Oval sizes are 9", 10" and 12" (229, 254 and 305).
- Pattern controller is split mid-way on units 36" (914) long and over. This allows a 2-way opposite blow pattern from a single slot.

\* For installation instructions, see IOM-FRPINST.

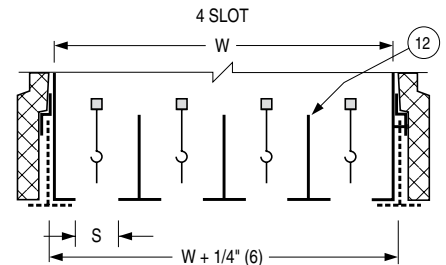
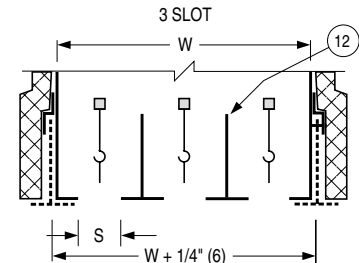
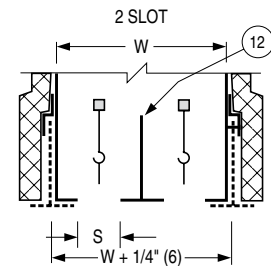
**ITEMS:**

- Fusible link damper support chain.
- Diffuser casing.
- Insulated, hinged damper blade.
- Clip for ceiling grid member – 4 sides.
- Existing grid member.
- Supplementary ceiling grid member. UL Listed (optional or by others).
- #8 screws for grid member attachment.
- Thermal shroud.
- Adjustable pattern controller. The position can be as shown or rotated 180° to opposite position.
- U.L. Listed fusible link. 165°F (74°C) is standard.

- Hanger wire at casing mid-point.
- Intermediate grid bars supplied and installed by factory.

**OPTIONS:**

- ☐ ID Inlet Damper
- ☐ EX External Foil Back Insulation.
- Supplementary ceiling grid (T-Bar) member (UL Listed).
  - ☐ T1 One (inlet side).
  - ☐ T0 One (opposite inlet side).



		S (Slot Width)			
		1/2" (13)	3/4" (19)	1" (25)	1 1/2" (38)
W (Width)	1 slot	1 1/2" (38)	1 3/4" (44)	2" (51)	2 1/2" (64)
	2 slot	3" (76)	3 1/2" (89)	4" (102)	5" (127)
	3 slot	4 1/2" (114)	5 1/4" (133)	6" (152)	7 1/2" (191)
	4 slot	6" (152)	7" (178)	8" (203)	N/A

		Nominal Inlet Size			
		6" (152) Round	8" (203) Round	10" (254) Oval	12" (305) Oval
A		5 7/8" (149)	7 7/8" (200)	11" (279)	14 1/8" (359)
B		—	—	7 7/8" (200)	7 7/8" (200)

**SCHEDULE TYPE:**

**PROJECT:**

**ENGINEER:**

**CONTRACTOR:**

Dimensions are in inches (mm).

DATE	B SERIES	SUPERSEDES	DRAWING NO.
3 - 13 - 25	5500	1 - 16 - 17	5500-2