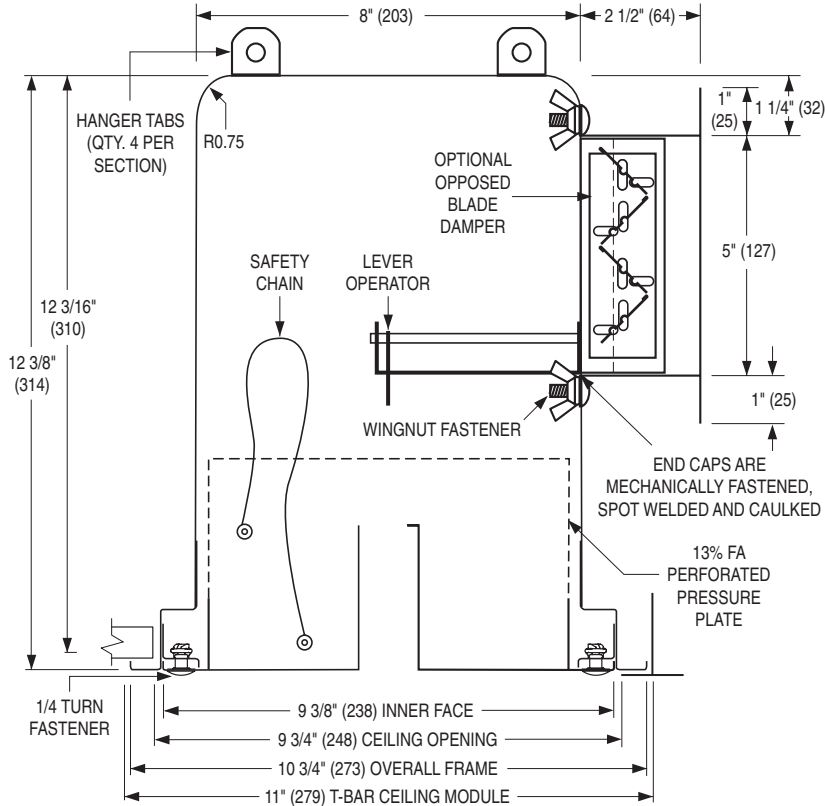




**STERI-SYSTEM LINEAR SLOT DIFFUSER
OPERATING ROOM AIR CURTAIN
MODELS: 92LS-AL (-O) ALUMINUM AND
92LS-SS(-O) STAINLESS STEEL**



TYPE S
SURFACE MOUNT

TYPE L
LAY-IN T-BAR

* Compatible with T-Bars up to 1 1/2" (38) wide.

DESCRIPTION:

The Model Series 92LS Steri-System Linear Slot Diffuser is specially designed to provide an air curtain for operating rooms. The unique slot design creates a continuous curtain of air, angled outwards 5 – 15 degrees, that encloses the operating area and minimizes the possibility of contaminated air entering the surgical area. The plenum is seamless construction along the length with radiused corners to facilitate cleaning.

An optional stainless steel opposed blade damper is available for balancing. The damper is held in place by wing nuts and can be easily removed for cleaning. A lever operator is standard for accurate adjustment from the face of the diffuser.

STANDARD FEATURES:

1. Type 304 Stainless Steel face and distribution plenum. Minimum 22 ga. End caps are mechanically fastened, spot welded and caulked.
2. Stainless Steel or aluminum pressure plate dependent on model.
3. Standard safety cables prevent accidental dropping of the removable face.
4. All face panels attached with stainless steel 1/4 turn fasteners.

CONSTRUCTION:

- 92LS-SS Stainless Steel
- 92LS-AL Aluminum

OPTIONS:

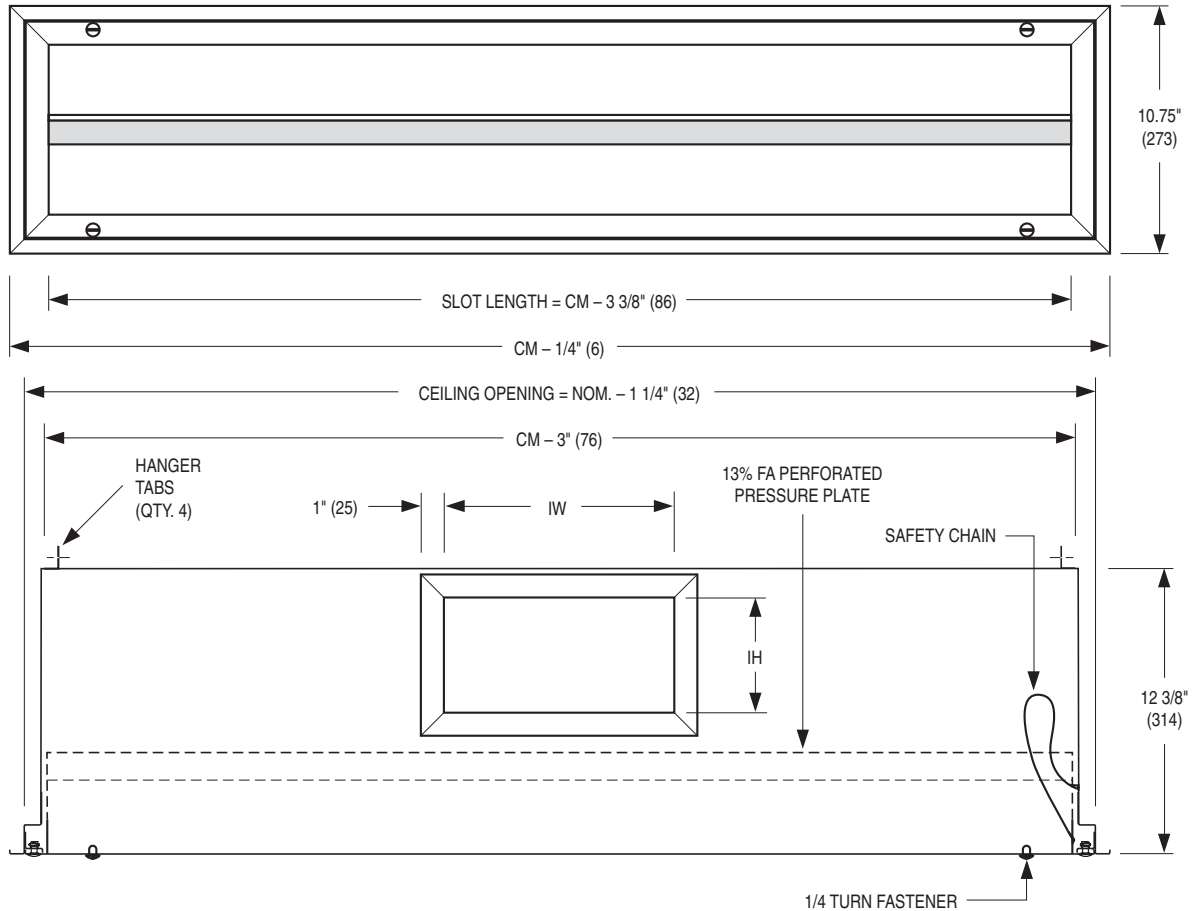
- 316 Type 316 Stainless Steel construction (-SS models only).
- Opposed Blade Damper Model Suffix -O.
- #4 Brushed Satin Polished (-SS models only).
- AW Appliance White (standard on -AL models, optional on -SS models).
- FWP 18 ga. (1.219) stainless steel fully welded plenum construction.

SCHEDULE TYPE:				
PROJECT:				
ENGINEER:				
CONTRACTOR:				
DATE	B SERIES	SUPERSEDES	DRAWING NO.	
3 - 10 - 20	92LS-SS	9 - 2 - 16	92LS-1	



STERI-SYSTEM LINEAR SLOT DIFFUSER
OPERATING ROOM AIR CURTAIN
MODELS: 92LS-AL (-O) ALUMINUM AND
92LS-SS(-O) STAINLESS STEEL

2 FT. – 6 FT. MODULES (24" – 72")



STANDARD SIZES:

CM Ceiling Module	No. of Sections	IW X IH	Inlet Qty.
4 ft./48" (1219)	1	10" x 5" (254 x 127)	1
6 ft./72" (1829)	1	16" x 5" (406 x 127)	1

OPTIONS:

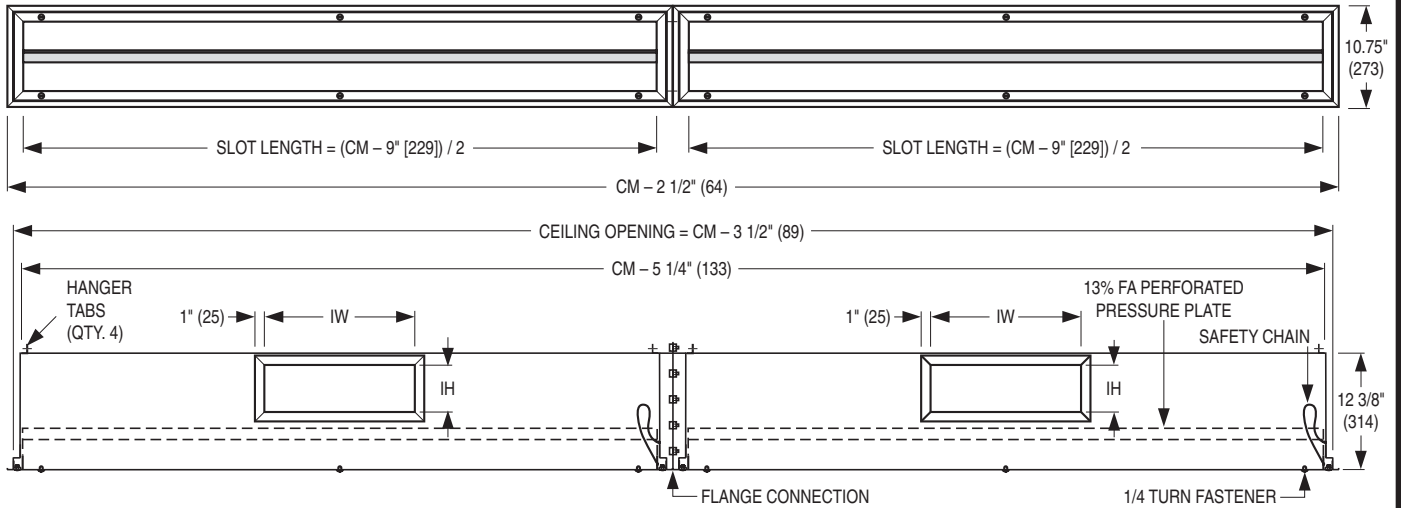
- CTMI Custom Inlet Size
Specify ____ IW x ____ IH
(available IH height is 4", 5" or 6" [102, 127 or 152]).
- CTML Custom Length
Specify ____ L

SCHEDULE TYPE:		Page 2 of 4			
PROJECT:		Dimensions are in inches (mm).			
ENGINEER:	DATE	B SERIES	SUPERSEDES	DRAWING NO.	
CONTRACTOR:	3 - 10 - 20	92LS-SS	9 - 2 - 16	92LS-1	



**STERI-SYSTEM LINEAR SLOT DIFFUSER
OPERATING ROOM AIR CURTAIN
MODELS: 92LS-AL (-O) ALUMINUM AND
92LS-SS(-O) STAINLESS STEEL**

8 FT. – 14 FT. MODULES (96" – 168")



STANDARD SIZES:

CM Ceiling Module	No. of Sections	IW X IH	Inlet Qty.
8 ft./96" (2438)	2	10" x 5" (254 x 127)	2
10 ft./120" (3048)	2	12" x 5" (305 x 127)	2
12 ft./144" (3658)	2	16" x 5" (406 x 127)	2
14 ft./168" (4267)	2	18" x 5" (457 x 127)	2

OPTIONS:

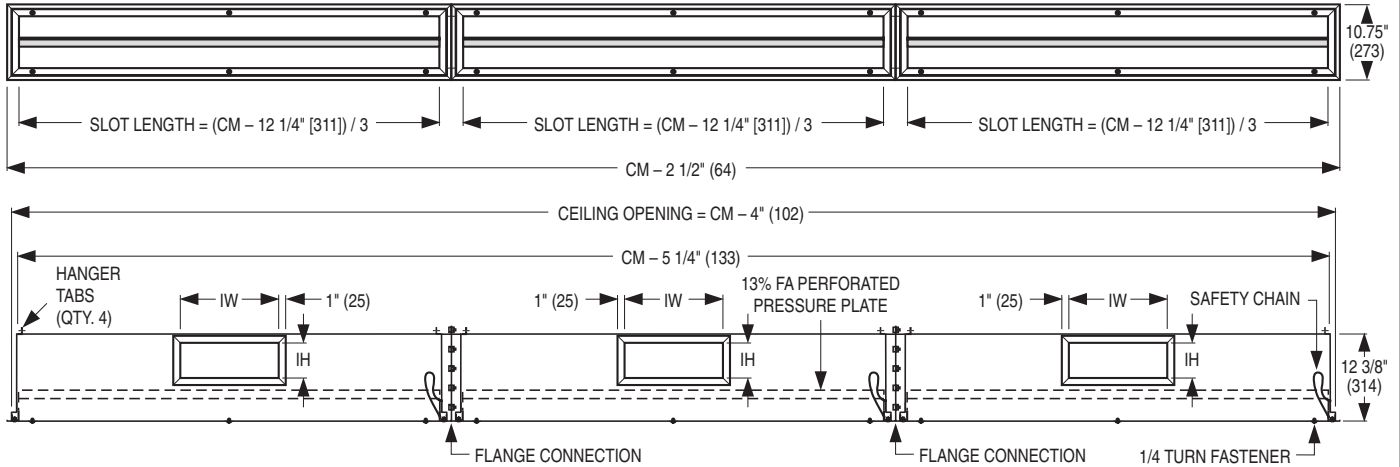
- CTMI Custom Inlet Size
Specify ____ IW x ____ IH
(available IH height is 4", 5" or 6" [102, 127 or 152]).
- CTML Custom Length
Specify ____ L

SCHEDULE TYPE:		Page 3 of 4			
PROJECT:		Dimensions are in inches (mm).			
ENGINEER:	DATE	B SERIES	SUPERSEDES	DRAWING NO.	
CONTRACTOR:	3 - 10 - 20	92LS-SS	9 - 2 - 16	92LS-1	



STERI-SYSTEM LINEAR SLOT DIFFUSER
OPERATING ROOM AIR CURTAIN
MODELS: 92LS-AL (-O) ALUMINUM AND
92LS-SS(-O) STAINLESS STEEL

16 FT. – 18 FT. MODULES (192" – 216")



STANDARD SIZES:

CM Ceiling Module	No. of Sections	IW X IH	Inlet Qty.
16 ft./192" (4877)	3	14" x 5" (356 x 127)	3
18 ft./216" (5486)	3	16" x 5" (406 x 127)	3

OPTIONS:

- CTMI Custom Inlet Size
Specify ____ IW x ____ IH
(available IH height is 4", 5" or 6" [102, 127 or 152]).
- CTML Custom Length
Specify ____ L

SCHEDULE TYPE:
PROJECT:
ENGINEER:
CONTRACTOR:

Page 4 of 4
 Dimensions are in inches (mm).

DATE	B SERIES	SUPERSEDES	DRAWING NO.
3 - 10 - 20	92LS-SS	9 - 2 - 16	92LS-1