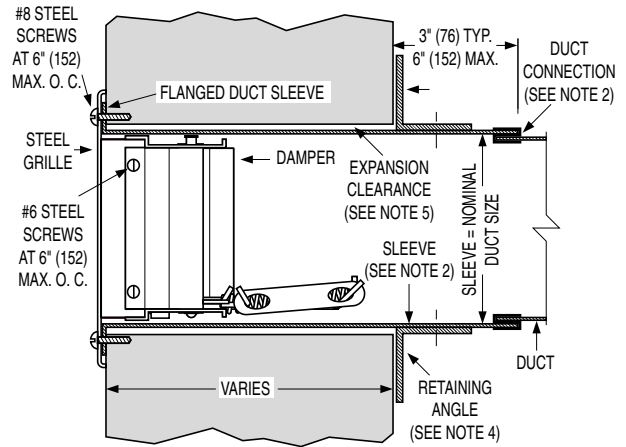
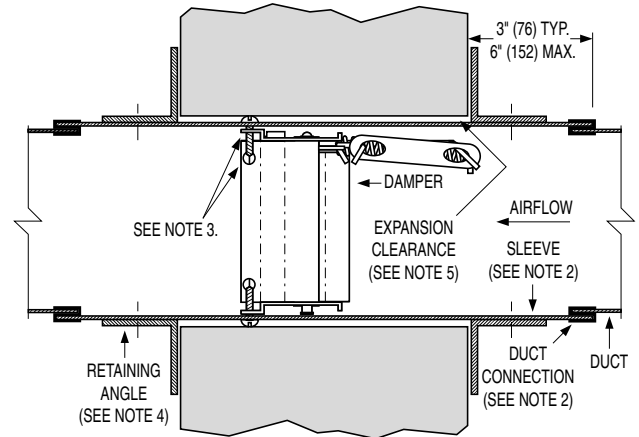


NOTES:

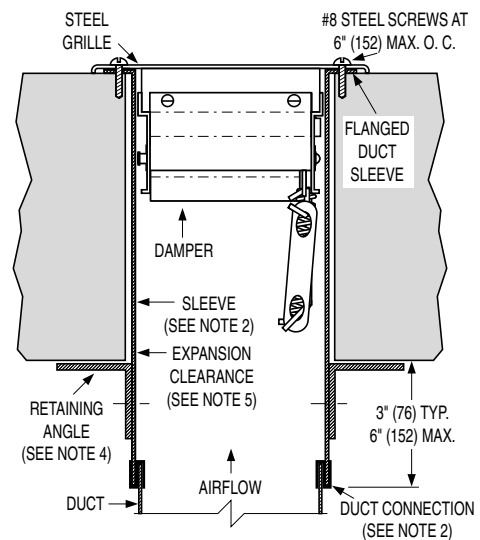
- Installation shall be in accordance with the appropriate requirements of the local building code having jurisdiction.
- Sleeve:** Gauge shall conform to SMACNA or ASHRAE standards and shall not be less than the gauge of the duct to which it is attached when one of the following duct-sleeve connections (break-away joint) is used; plain 'S' slip, hemmed 'S' slip, double 'S' slip, inside slip joint, standing S and reinforced standing S. Drive slip may be used on sides only on dampers up to 20" (508) in height. If any other duct connection is used, sleeve thickness shall be a minimum of 0.054" (16 ga.) (1.4) for dampers up to 36" (914) in width and 24" (610) in height and 0.068" (14 ga.) (1.73) for larger dampers.
- Secure damper to sleeve** with #6 min. (M3-5) steel screws, 1/4" (M6) nuts and bolts, 1/2" (13) long welds or 3/16" (5) steel rivets at max. 6" (152) o.c. and 2" (51) max. from the corner of the damper on all four sides. Alternatively, directly attach damper to steel grille with #6 (M3-5) steel screws at 6" (152) max. o.c.
- Retaining angles** shall be a minimum of 1 1/2" x 1 1/2" x 0.059" (16 ga.) (38 x 38 x 1.5) and must overlap opening by a minimum of 1" (25) on all four sides and cover corners of opening. Attach to sleeve with #10 (M5) steel screws, 1/4" (M6) bolts and nuts, 1/2" (13) long welds or 3/16" (5) steel rivets at 8" (203) max. o.c.
- Expansion clearance** between the sleeve and wall or floor shall be a minimum of 1/8" (3) per foot of width and height of the sleeve. The maximum size of the opening shall be 1/2" (13) larger in either dimension than the allowable minimum.
- Minimum size:** 6" x 4" (152 x 102).
Maximum size: 24" x 12" (610 x 305) single section; 24" x 24" (610 x 610) or 48" x 12" (1219 x 305) as a factory assembled multiple section.




SIDEWALL INSTALLATION WITH GRILLE



SIDEWALL OR FLOOR INSTALLATION DUCT MOUNTED



FLOOR INSTALLATION WITH GRILLE

 <p>Warnock Hersey</p>	<p>LISTED FIRE DAMPER - 1 1/2 HR. RATING</p> <p>TESTED IN ACCORDANCE WITH ULC S112/UL555</p>	<p>NAILOR INDUSTRIES INC.</p> <p>TORONTO, ONTARIO HOUSTON, TEXAS</p>
	<p>WH-</p> <p>DO NOT REMOVE OR COVER LABEL NE PAS ENLEVER OU COUVRIR LETIQUETTE</p>	
<p>FOR INSTALLATION IN VERTICAL OR HORIZONTAL POSITION, WITH OR WITHOUT STEEL REGISTER.</p>		

SCHEDULE TYPE:

PROJECT:

ENGINEER:

CONTRACTOR:

Dimensions are in inches (mm).

DATE	C SERIES	SUPERSEDES	DRAWING NO.
17 - 8 - 99R	ACC. GR.	2 - 95	ACC.907FL-2