



ALUMINUM FLOOR "SWIRL" DIFFUSER
 ROUND • SIZE 8 & 10
 UNDERFLOOR AIR DISTRIBUTION SYSTEMS
 MODEL: ANFD

DESCRIPTION:

The Nailor ANFD aluminum floor diffuser is designed for use in raised access floor air distribution systems, where the floor cavity is used as a pressurized supply air plenum. The NFD core design produces a low velocity helical "swirl" discharge air pattern. This design achieves high induction rates of room air which optimizes mixing for maximum comfort conditions.

FEATURES:

- **Meets all the requirements of NFPA 90A.**
- Complete assembly is UL tested and classified in accordance with UL standard 2043.
- Cast aluminum construction.
- Available in 8" (203) and 10" (254) dia. nominal sizes. Low profile design.
- Dust/dirt collection basket catches anything that might fall through diffuser face. Removable for cleaning.
- Optional flow regulator damper adjustable without removing the diffuser core, features visual open/closed indication and includes an adjustable minimum volume stop.
- Low pressure drop core/damper assembly design.
- Core lies flush with trim ring flange, with or without damper.
- Rugged trim ring design secures carpet and prevents edges from fraying.
- Unique adjustable mounting clamp design adapts to any floor panel thickness and provides simple and secure installation. Permits installation from above the floor without removal of the floor panel or carpet.
- A PVC ribbed Press Fit Gasket is also available as a "labor saving" mounting option.
- Standard finish is GRT Gray or BKT Black Textured baked enamel.

SELECTION:

1. TR Trim Ring (std.) None
2. Dirt Basket/Damper
 - BDA Attached to Core (std.) BDL Loose
 - BOO Basket Only None
3. Mounting (requires trim ring):
 - MC Mounting Clamps (std.)
 - PFG Press Fit Gasket (opt.)
4. Finish:
 - GRT Gray BKT Black
 - SPT Special (custom color by architect)
Specify _____
5. Accessories:
 - CLC Core Locking Clips
 - BDEX Basket/Damper Extension
(see submittal NFD-BDEX)

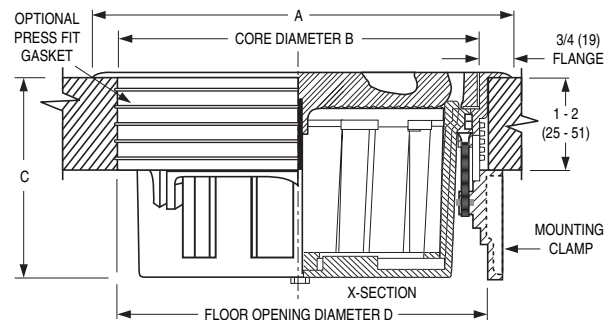
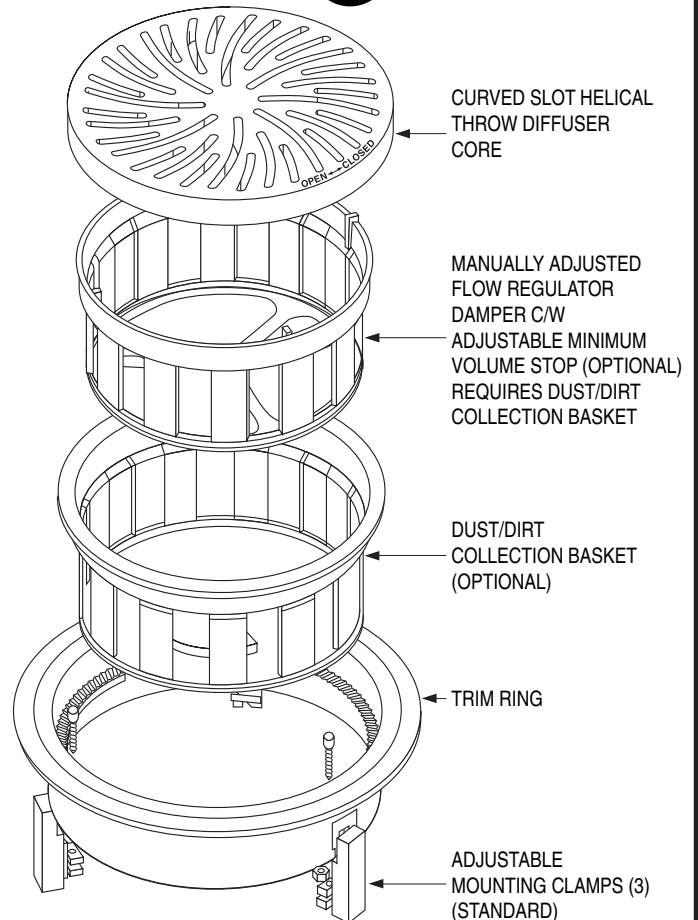
Precision Floor Opening Diameter

Nominal Size	Mounting	D
8 (203)	MC	8 1/4 (210)
	PFG	8 3/8 (213)
10 (254)	MC	10 7/16 (265)
	PFG	10 9/16 (268)

Tolerance: +/- 1/32 (0.8).



**NAILOR INDUSTRIES INC.
 FLOOR DIFFUSER**
*AS TO HEAT RELEASE RATE AND
 SMOKE OPTICAL DENSITY ONLY*
 R21545 25KU



Dimensional Data

Nominal Size	A	B	C
8 (203)	9 5/16 (237)	7 3/4 (197)	4 1/4 (108)
10 (254)	11 1/2 (292)	9 15/16 (252)	5 1/2 (140)

Dimensions are in inches (mm).

SCHEDULE TYPE:

PROJECT:

ENGINEER:

CONTRACTOR:

DATE	B SERIES	SUPERSEDES	DRAWING NO.
11 - 26 - 15	NFD	2 - 28 - 11	ANFD-1