



**DYNAMIC OUT OF WALL CURTAIN TYPE FIRE DAMPER  
FOR THROUGH PENETRATIONS  
FOR DYNAMIC OR STATIC SYSTEMS  
MODEL: D0110DOW (TYPE A)**



**QUALIFICATIONS:**

- UL 555 & CAN/ULC-S112 CLASSIFIED DYNAMIC FIRE DAMPER. 1 1/2 hr. label (File # R9492).
- Meets all the requirements of UL and NFPA 80, 90A and 101 for fire dampers in dynamic HVAC systems, as well as IBC and NBC (Canada) Building Code requirements.
- City of New York Board of Standards and Appeals. Cal. No. 460-88-SA.
- California State Fire Marshal: Fire Damper Listing No. 3225-0935:0113.
- Maximum velocity: 4000 fpm @ 4" w.g. (20 m/s @ 1 kPa).

Model D0110DOW is an "out of wall or floor" integral sleeve dynamic curtain type fire damper, specifically designed for through penetrations (ductwork connected to both sides) where the damper cannot be installed within the plane of the wall. For use where local building codes require the protection of HVAC ductwork penetrations in walls, partitions or floors that have a fire resistance rating of up to two hours.

**FEATURES:**

- Shipped complete with integral insulated sleeve. No field assembly required.
- UL Classified for vertical or horizontal installation.
- Qualified for use in both Dynamic and Static Systems.

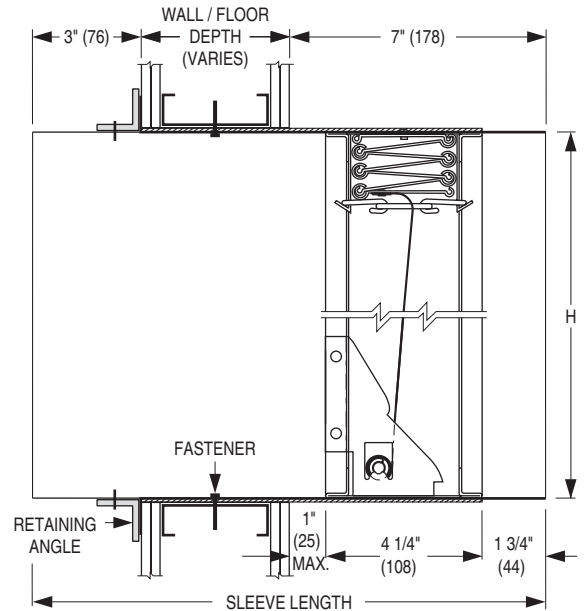
**STANDARD CONSTRUCTION:**

- Frame:** One piece, 22 ga. (0.85) roll-formed galvanized steel.  
**Blades:** Curtain type interlocking blades, 22 ga. (0.85) roll-formed galvanized steel.  
**Fusible Link:** 165°F (74°C) standard. UL Listed. 212°F (100°C) available.  
**Sleeve:** 16 ga. (1.61) galvanized steel. Length varies to suit wall/floor depth.  
**Blade Closure:** Stainless steel closure springs & galv. steel locking ramps.  
**Insulation:** Intumescent thermal insulation on four sides.

**Sizes (Duct W x H):**

Velocity/ Pressure Rating	Single Section				Multiple Section	
	Minimum		Maximum		Maximum	
	Vertical	Horizontal	Vertical	Horizontal	Vertical	Horizontal
24	6" x 6" (152 x 152)	6" x 6" (152 x 152)	24" x 24" (610 x 610)	24" x 24" (610 x 610)	36 x 24" (914 x 610)	—
34, 44	6" x 6" (152 x 152)	—	24" x 24" (610 x 610)	—	—	—

**STANDARD DAMPER/SLEEVE:**



**NOTES:**

Sleeve Length Formula:  
 Wall or Floor Depth + 10" (254)  
 Example: Wall Depth 4" (102) + 10" (254) = 14" (356)

**DYNAMIC VELOCITY/PRESSURE RATING:**

- 24 2000 fpm @ 4" w.g. (Standard)
- 34 3000 fpm @ 4" w.g. } (Optional)
- 44 4000 fpm @ 4" w.g. }

**OPTIONS:**

- QS1 Quick-set single side retaining angles

**SCHEDULE TYPE:**

**PROJECT:**

**ENGINEER:**

**CONTRACTOR:**

For installation instructions, see IOM-FDDOWINST.  
 Dimensions are in inches (mm).

DATE	B SERIES	SUPERSEDES	DRAWING NO.
9 - 1 - 23	FD	1 - 11 - 23	D0100-8