



**DYNAMIC OUT OF WALL CURTAIN TYPE FIRE DAMPER
FOR GRILLES AND REGISTERS
FOR DYNAMIC OR STATIC SYSTEMS
MODEL: D0120GOW (TYPE B)**



QUALIFICATIONS:

- **UL 555 & CAN/ULC-S112 CLASSIFIED DYNAMIC FIRE DAMPER. 1 1/2 hr. label (File # R9492).**
- **Meets all the requirements of UL and NFPA 80, 90A and 101 for fire dampers in dynamic HVAC systems, as well as IBC and NBC (Canada) Building Code requirements.**
- **City of New York Board of Standards and Appeals. Cal. No. 460-88-SA.**
- **California State Fire Marshal: Fire Damper Listing No. 3225-0935:0113.**
- **Maximum velocity: 4000 fpm @ 4" w.g. (20 m/s @ 1 kPa).**

Model D0120GOW is an "out of wall or floor" integral sleeve dynamic curtain type fire damper, specifically designed for supply or return ducts that terminate at a grille or register. For use where local building codes require the protection of HVAC ductwork penetrations in walls, partitions or floors that have a fire resistance rating of up to two hours.

The D0120GOW design provides sufficient damper off-set to accommodate most commercial grille/register designs while providing maximum free area without having to oversize the grille/register. This model is particularly suited for use in common steel stud drywall partition designs, as narrow as 3 1/2" (89) where a traditional "within the plane of the wall" fire damper installation is not possible.

FEATURES:

- 3/4" (19) mounting flange installation (field supplied), is hidden by grille frame and eliminates the requirement for unsightly mounting angles.
- Qualified for use with steel or aluminum grilles and registers (by Nailor or others).
- Shipped complete with integral insulated sleeve.
- UL Classified for vertical or horizontal installation.
- Qualified for use in both Dynamic and Static Systems.

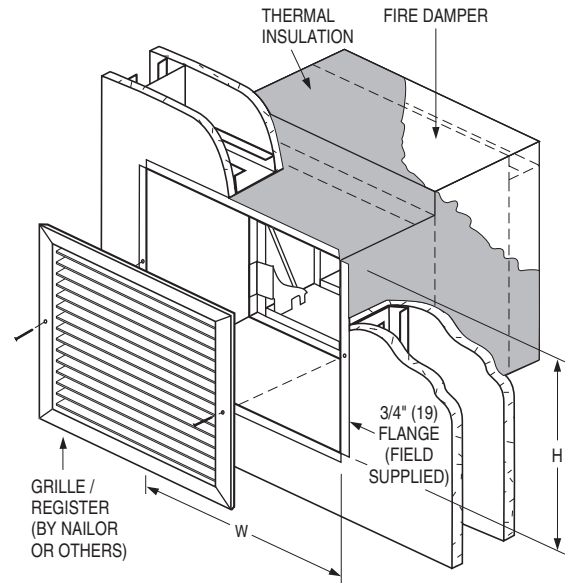
STANDARD CONSTRUCTION:

- Frame:** One piece, 22 ga. (0.85) roll-formed galvanized steel.
Blades: Curtain type interlocking blades, 22 ga. (0.85) roll-formed galvanized steel.
Fusible Link: 165°F (74°C) standard. UL Listed. 212°F (100°C) available.
Sleeve: 16 ga. (1.61) galvanized steel. Length varies to suit wall/floor depth.
Blade Closure: Stainless steel closure springs & galv. steel locking ramps.
Insulation: Intumescent thermal insulation on four sides.
Sizes (Duct W x H):

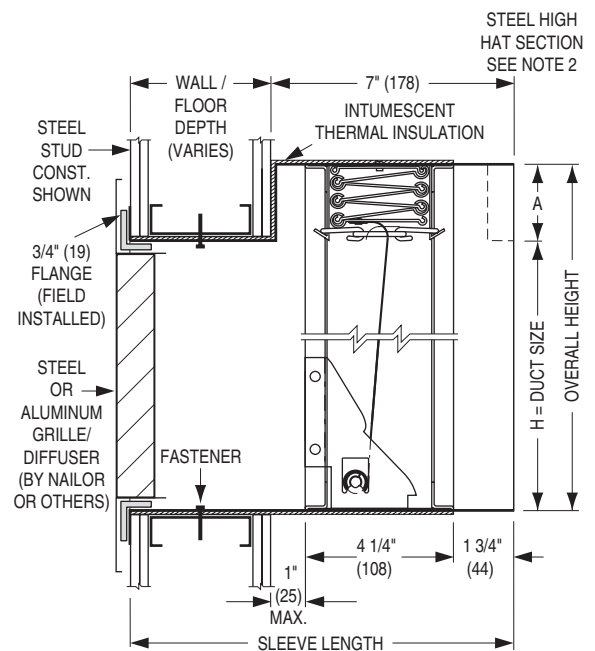
Velocity/ Pressure Rating	Single Section				Multiple Section	
	Minimum		Maximum		Maximum	
	Vertical	Horizontal	Vertical	Horizontal	Vertical	Horizontal
24	6" x 4" (152 x 102)	6" x 4" (152 x 102)	24" x 21" (610 x 533)	24" x 21" (610 x 533)	36" x 21" (914 x 533)	—
34, 44	6" x 4" (152 x 102)	—	24" x 21" (610 x 533)	—	—	—

NOTES:

1. Sleeve Length Formula:
Wall or Floor Depth + 7" (178).
Example: Wall Depth 4" (102) + 7" (178) = 11" (279) sleeve.



STANDARD DAMPER/SLEEVE:



2.

Duct Height (H)	Dim. 'A'
4" - 17" (102 - 432)	2" (51)
18" - 21" (457 - 533)	3" (76)

DYNAMIC VELOCITY/PRESSURE RATING:

- 24** 2000 fpm @ 4" w.g. (Standard)
- 34** 3000 fpm @ 4" w.g. } (Optional)
- 44** 4000 fpm @ 4" w.g. }

For installation instructions, see IOM-FDGOWBINST.
Dimensions are in inches (mm).

SCHEDULE TYPE:				
PROJECT:				
ENGINEER:	DATE	B SERIES	SUPERSEDES	DRAWING NO.
CONTRACTOR:	9 - 1 - 23	FD	1 - 11 - 23	D0100-9