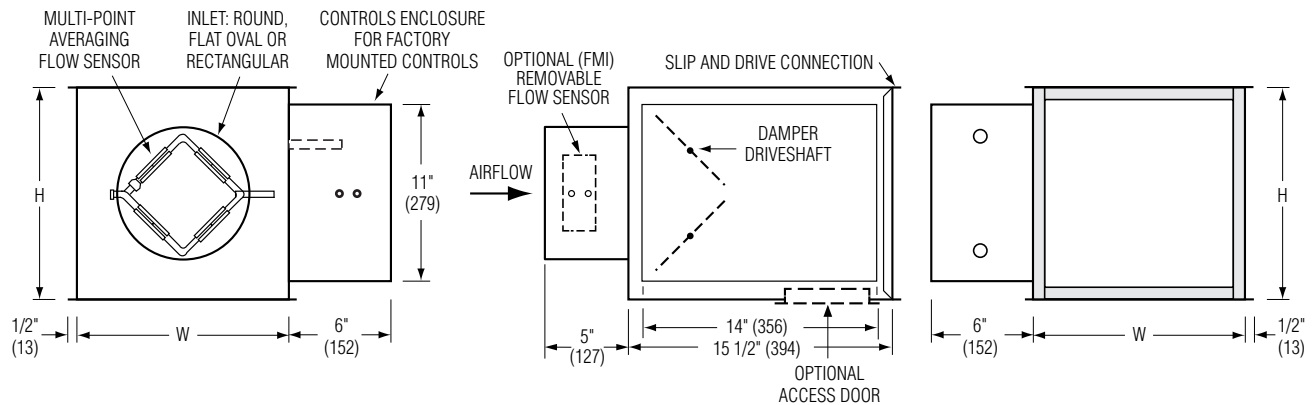




SINGLE DUCT TERMINAL UNIT

DIGITAL CONTROLS • PRESSURE INDEPENDENT
CONSTANT OR VARIABLE VOLUME
MODEL: D3001



Dimensional Data

Unit Size	Airflow Range* cfm (l/s)	W	H	Inlet Size
4	0 – 225 (0 – 106)	10 (254)	10 (254)	3 7/8 (98) Round
5	0 – 400 (0 – 189)	10 (254)	10 (254)	4 7/8 (124) Round
6	0 – 550 (0 – 260)	10 (254)	10 (254)	5 7/8 (149) Round
7	0 – 800 (0 – 378)	12 (305)	12 1/2 (318)	6 7/8 (175) Round
8	0 – 1100 (0 – 519)	12 (305)	12 1/2 (318)	7 7/8 (200) Round
9	0 – 1400 (0 – 661)	14 (356)	12 1/2 (318)	8 7/8 (225) Round
10	0 – 1840 (0 – 868)	14 (356)	12 1/2 (318)	9 7/8 (251) Round
12	0 – 2500 (0 – 1180)	18 (457)	12 1/2 (318)	12 15/16 x 9 13/16 (329 x 249) Oval
14	0 – 3125 (0 – 1475)	24 (610)	12 1/2 (318)	16 1/16 x 9 13/16 (408 x 249) Oval
16	0 – 3725 (0 – 1758)	28 (711)	12 1/2 (318)	19 3/16 x 9 13/16 (487 x 249) Oval
24 x 16	0 – 8330 (0 – 3931)	38 (965)	18 (457)	23 7/8 x 15 7/8 (606 x 403) Rect.

* Maximum airflow limit is based upon 1.5" w.g. (373 Pa) max. differential pressure signal from Diamond Flow Sensor.

Standard Features:

- 22 ga. (0.86) galvanized steel casing, mechanically sealed, low leakage construction.
- 16 ga. (1.63) corrosion-resistant steel inclined opposed blade damper with extruded PVC seals (single blade on size 4, 5, 6). 45° rotation, CW to close. Tight close-off. Damper leakage is less than 2% of the terminal rated airflow at 3" w.g. (750 Pa).
- 1/2" (13) dia. plated steel drive shaft. An indicator mark on the end of the shaft shows damper position.
- Multi-point averaging Diamond Flow Sensor. Aluminum construction. Supplied with balancing tees.
- Rectangular discharge with slip and drive cleat duct connection.
- Full NEMA 1 type controls enclosure for factory mounted controls.

- 3/4" (19), dual density fiberglass insulation, exposed edges coated to prevent air erosion. Meets the requirements of NFPA 90A and UL 181.
- Right-hand controls location is standard (shown) when looking in direction of airflow. Optional left hand controls mounting is available.
- Model D3001 can be installed horizontally, vertical or at any angle. Operation is not affected by position.

Digital Controls:

- ☐ Factory mounted (supplied by others)
 - ☐ Field mounted (supplied by others)
 - ☐ Nailor EZvav
- See separate submittal.

Options and Accessories:

- ☐ FG 13/16" (21) Steri-liner
- ☐ FG1 1" (25) Steri-liner
- ☐ FGJ 13/16" (21) Steri-liner w/perf.

- ☐ FG2 3/4" (19) Fiber-free liner
 - ☐ FG3 1" (25) Fiber-free liner
 - ☐ FJ 3/4" (19) Perforated metal liner/F. Glass
 - ☐ FL 3/4" (19) Solid metal liner/F. Glass
 - ☐ FT1 1" (25) D. D. Fiberglass liner
 - ☐ FTL Low temperature construction
 - ☐ FW No Liner
 - ☐ 20 ga. (1.00) casing
 - ☐ 24 VAC control transformer
 - ☐ FMI Removable insert type Flow Sensor
 - ☐ Bottom access door
 - ☐ Toggle disconnect switch
 - ☐ Controls enclosure for field mounted controls
 - ☐ Hanger brackets
 - ☐ Dust tight enclosure seal
 - ☐ Ultra low leakage casing
- Seismic Certification:
- ☐ Seismic Source International (Standard)
 - ☐ HCAI (formerly OSHPD, California)
 - ☐ Special features: _____.



Intertek



SCHEDULE TYPE:

PROJECT:

ENGINEER:

CONTRACTOR:

DATE

B SERIES

SUPERSEDES

DRAWING NO.

7 - 11 - 25

3000

1 - 10 - 25

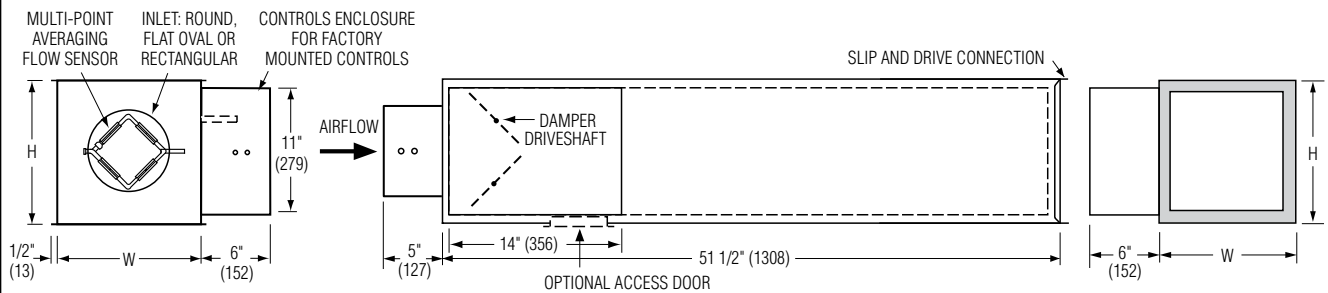
D3001-1

Page 1 of 2.

Dimensions are in inches (mm).

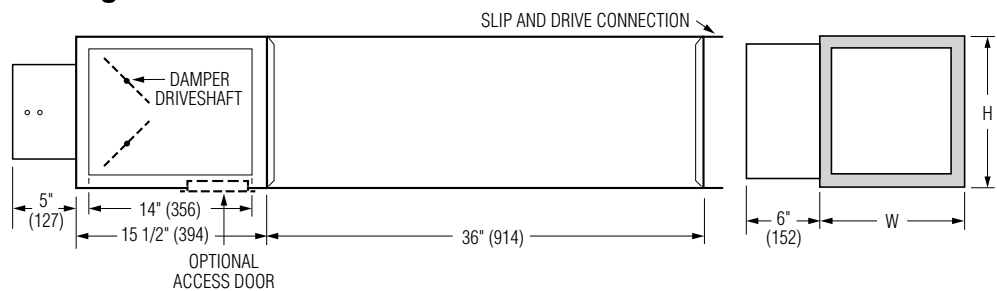
□ AT3I 3' Integral Sound Attenuator

- Single continuous length terminal construction minimizes casing leakage.
- Continuous internal insulation reduces insulation seams
- and minimizes airflow disturbance.
- Supplied with same liner as basic unit.

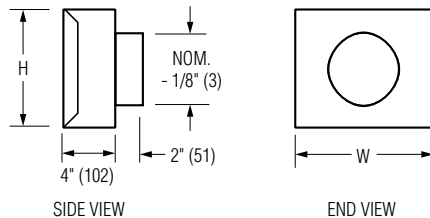


□ AT3S 3' Separate Discharge Sound Attenuator

- 22 ga. (0.86) galvanized steel construction.
- Slip and drive connection.
- Supplied with same liner as basic unit.
- Factory installed.



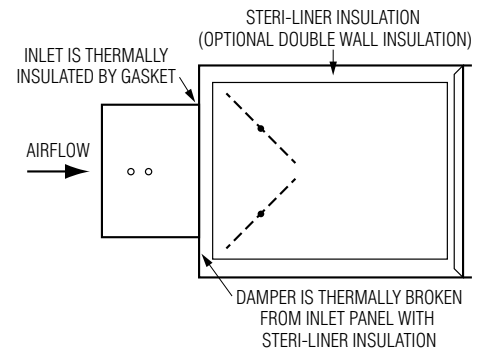
□ FF Round Discharge Collar



Dimensional Data

Unit Size	W	H	Access Door	FF Nominal Outlet Size
4, 5, 6	10 (254)	10 (254)	8 x 5 (203 x 127) Flat Oval	4, 5, 6 (102, 127, 152)
7, 8	12 (305)	12 1/2 (318)		7, 8 (178, 203)
9, 10	14 (356)	12 1/2 (318)		9, 10 (229, 254)
12	18 (457)	12 1/2 (318)		12 (305)
14	24 (610)	12 1/2 (318)	12 x 6 (305 x 152) Flat Oval	14 (356)
16	28 (711)	12 1/2 (318)		16 (406)
24 x 16	38 (965)	18 (457)		—

□ FTL Low Temperature Construction



SCHEDULE TYPE:

PROJECT:

ENGINEER:

CONTRACTOR:

Page 2 of 2.
Dimensions are in inches (mm).

DATE	B SERIES	SUPERSEDES	DRAWING NO.
7 - 11 - 25	3000	1 - 10 - 25	D3001-1