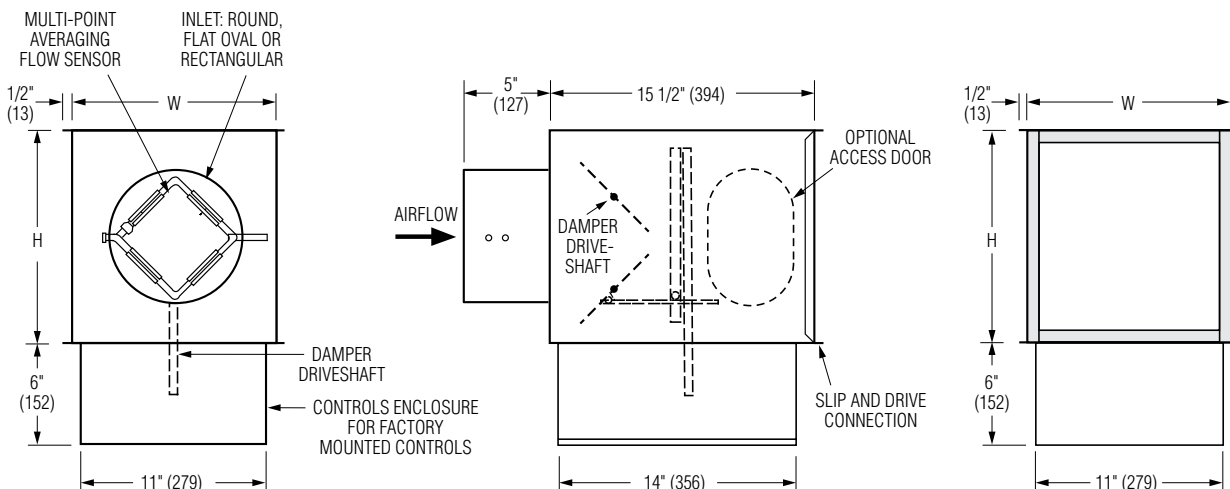




SINGLE DUCT TERMINAL UNIT
DIGITAL CONTROLS • PRESSURE INDEPENDENT
CONSTANT OR VARIABLE VOLUME
MODELS: D3001 WITH BOTTOM MOUNT CONTROLS
LOCATION (OPTION OB)



Dimensional Data

Unit Size	Airflow Range* cfm (l/s)	W	H	Inlet Size
4	0 – 225 (0 – 106)	10 (254)	10 (254)	3 7/8 (98) Round
5	0 – 400 (0 – 189)	10 (254)	10 (254)	4 7/8 (124) Round
6	0 – 550 (0 – 260)	10 (254)	10 (254)	5 7/8 (149) Round
7	0 – 800 (0 – 378)	12 (305)	12 1/2 (318)	6 7/8 (175) Round
8	0 – 1100 (0 – 519)	12 (305)	12 1/2 (318)	7 7/8 (200) Round
9	0 – 1400 (0 – 661)	14 (356)	12 1/2 (318)	8 7/8 (225) Round
10	0 – 1840 (0 – 868)	14 (356)	12 1/2 (318)	9 7/8 (251) Round
12	0 – 2500 (0 – 1180)	18 (457)	12 1/2 (318)	12 15/16 x 9 13/16 (329 x 249) Oval
14	0 – 3125 (0 – 1475)	24 (610)	12 1/2 (318)	16 1/16 x 9 13/16 (408 x 249) Oval
16	0 – 3725 (0 – 1758)	28 (711)	12 1/2 (318)	19 3/16 x 9 13/16 (487 x 249) Oval
24 x 16	0 – 8330 (0 – 3931)	38 (965)	18 (457)	23 7/8 x 15 7/8 (606 x 403) Rect.



* Maximum airflow limit is based upon 1.5" w.g. (373 Pa) max. differential pressure signal from Diamond Flow Sensor.

Standard Features:

- Bottom mount controls location with vertical drive shaft (option code OB).
- 22 ga. (0.86) zinc coated steel casing, mechanically sealed, low leakage construction. Leakage is less than 1% of nominal flow at 1" w.g. (250 Pa).
- 16 ga. (1.61) corrosion-resistant steel inclined single blade damper with extruded PVC seals (single blade on size 4, 5, 6). 45° rotation, CW to close. Tight close-off. Damper leakage is less than 2% of the terminal rated airflow at 3" w.g. (750 Pa).
- 1/2" (13) dia. plated steel drive shaft. An indicator mark on the end of the shaft shows damper position.

- Multi-point averaging Diamond Flow Sensor. Aluminum construction. Supplied with balancing tees.
- Rectangular discharge with slip and drive cleat duct connection.
- Full NEMA 1 type controls enclosure for factory mounted controls.
- 3/4" (19), dual density insulation, exposed edges coated to prevent air erosion. Meets the requirements of NFPA 90A and UL 181.

Digital Controls:

- Factory mounted (supplied by others)
 - Field mounted (supplied by others)
 - Nailor EZvav
- See separate submittal.

Options and Accessories:

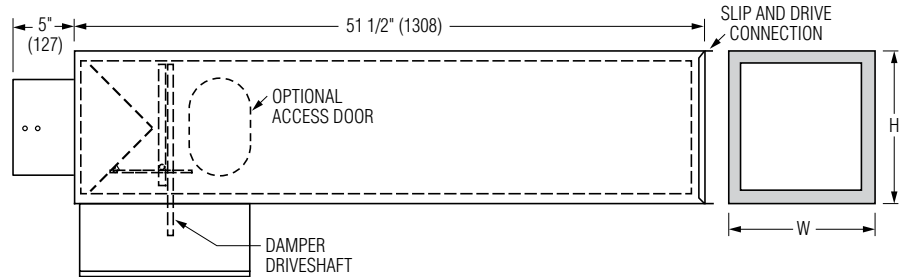
- Fiber-free liner.
- Perforated metal liner.
- Solid metal liner.
- Steri-liner.
- Steri-liner + Perforated metal liner.
- 1" (25) liner.
- FMI Removable insert type flow sensor.
- Side access door.
- 24 VAC Control transformer.
- Toggle disconnect switch.
- Hanger brackets.
- Controls enclosure for field mounted controls.
- Dust tight enclosure seal.
- Ultra low leakage casing.
- Special Features: _____

SCHEDULE TYPE:
PROJECT:
ENGINEER:
CONTRACTOR:

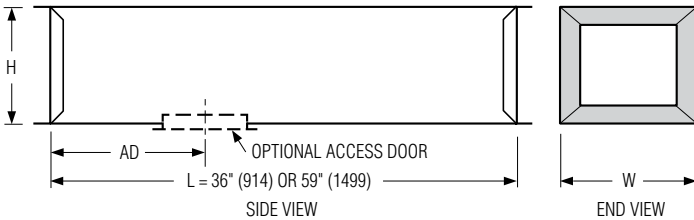
Page 1 of 2.			
Dimensions are in inches (mm).			
DATE	B SERIES	SUPERSEDES	DRAWING NO.
2 - 27 - 24	3000	3 - 30 - 17	D3001-2

Integral Sound Attenuator

- Single continuous length terminal construction minimizes casing leakage.
- Continuous internal insulation reduces insulation seams and minimizes airflow disturbance.
- Supplied with same liner as basic unit.



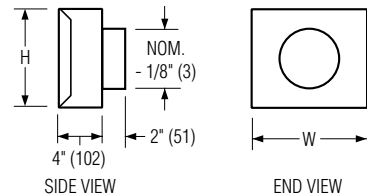
AT Discharge Sound Attenuator (loose)



- 22 ga. (0.86) galvanized steel construction.
- Shipped loose for field attachment.
- Slip and drive connection.
- 3/4" (14) dual density fiberglass insulation, exposed edges coated to prevent erosion as standard.

- AT313 3' (916) Long - Standard.**
- AT315 5' (1524) Long - Optional.**
- Special Features:** _____

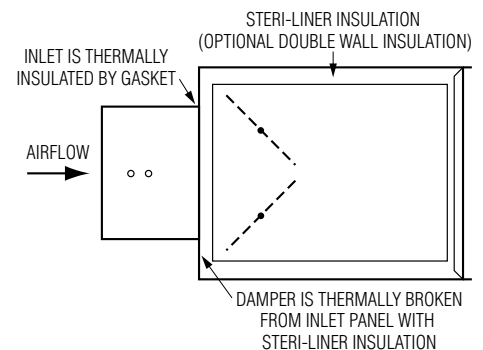
FF Round Discharge Collar



Dimensional Data

Unit Size	W	H	AD	FF Outlet Size
4, 5, 6	10 (254)	10 (254)	12 (305)	4, 5, 6 (102, 127, 152)
7, 8	12 (305)	12 1/2 (318)	12 (305)	7, 8 (178, 203)
9, 10	14 (356)	12 1/2 (318)	12 (305)	9, 10 (229, 254)
12	18 (457)	12 1/2 (318)	12 (305)	12 (305)
14	24 (610)	12 1/2 (318)	12 (305)	14 (356)
16	28 (711)	12 1/2 (318)	12 (305)	16 (406)
24 x 16	38 (965)	18 (457)	12 (305)	-

FTL Low Temperature Construction



SCHEDULE TYPE:

PROJECT:

ENGINEER:

CONTRACTOR:

Page 2 of 2.
 Dimensions are in inches (mm).

DATE

B SERIES

SUPERSEDES

DRAWING NO.

2 - 27 - 24

3000

3 - 30 - 17

D3001-2