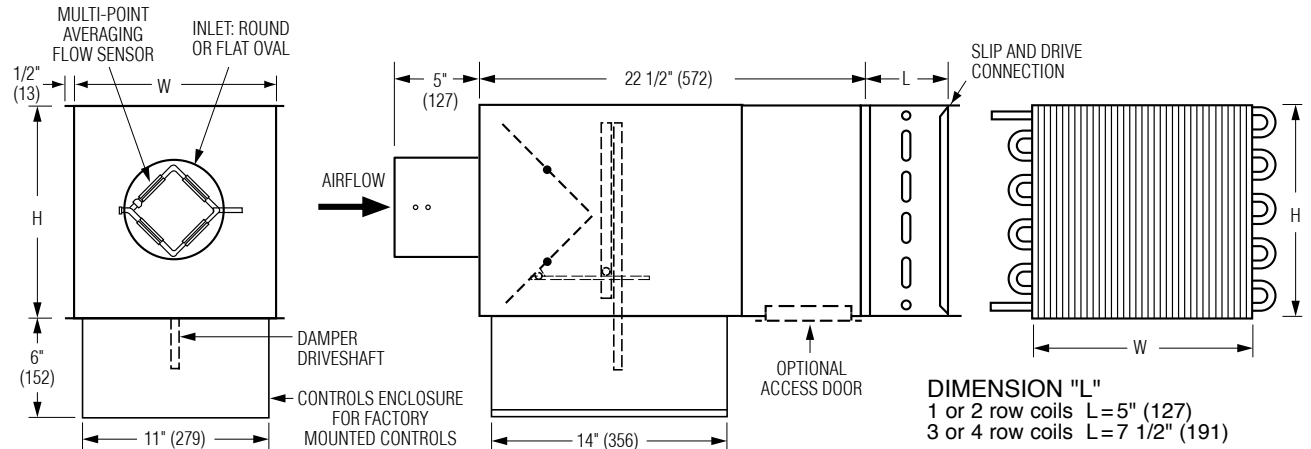




SINGLE DUCT TERMINAL UNIT W/HOT WATER REHEAT
OVERSIZED CASING (LARGER WATER COIL)
DIGITAL CONTROLS • PRESSURE INDEPENDENT
CONSTANT OR VARIABLE VOLUME
MODEL: D30RW WITH BOTTOM MOUNT CONTROLS
LOCATION (OPTION OB)



Dimensional Data

Unit Size	Inlet Size	Airflow Range* cfm (l/s)	W	H	Inlet Size (Nominal)	Coil Connections			
						1 Row	2 Row	3 Row	4 Row
8	4	0 – 225 (0 – 106)	12 (305)	12 1/2 (318)	3 7/8 (98) Round	1/2 (13)	7/8 (22)	7/8 (22)	7/8 (22)
	5	0 – 400 (0 – 189)			4 7/8 (124) Round	1/2 (13)	7/8 (22)	7/8 (22)	7/8 (22)
	6	0 – 550 (0 – 260)			5 7/8 (149) Round	1/2 (13)	7/8 (22)	7/8 (22)	7/8 (22)
10	7	0 – 800 (0 – 378)	14 (356)	12 1/2 (318)	6 7/8 (175) Round	1/2 (13)	7/8 (22)	7/8 (22)	7/8 (22)
	8	0 – 1100 (0 – 519)			7 7/8 (200) Round	1/2 (13)	7/8 (22)	7/8 (22)	7/8 (22)
12	9	0 – 1400 (0 – 661)	18 (457)	12 1/2 (318)	8 7/8 (225) Round	1/2 (13)	7/8 (22)	7/8 (22)	7/8 (22)
	10	0 – 1840 (0 – 868)			9 7/8 (251) Round	1/2 (13)	7/8 (22)	7/8 (22)	7/8 (22)
14	12	0 – 2500 (0 – 1180)	24 (610)	12 1/2 (318)	12 15/16 x 9 13/16 (329 x 249) Oval	1/2 (13)	7/8 (22)	7/8 (22)	7/8 (22)
16	14	0 – 3125 (0 – 1475)	28 (711)	12 1/2 (318)	16 1/16 x 9 13/16 (408 x 249) Oval	7/8 (22)	7/8 (22)	7/8 (22)	7/8 (22)
24	16	0 – 3725 (0 – 1758)	38 (965)	18 (457)	19 3/16 x 9 13/16 (487 x 249) Oval	7/8 (22)	7/8 (22)	1 3/8 (35)	1 3/8 (35)

* Maximum airflow limit is based upon 1.5" w.g. (373 Pa) max. differential pressure signal from Diamond Flow Sensor.

Standard Features:

- Bottom mount controls location with vertical drive shaft (option code OB).
- 22 ga. (0.86) zinc coated steel casing, mechanically sealed, low leakage construction.
- 16 ga. (1.61) corrosion-resistant steel inclined opposed blade damper with extruded PVC seals (single blade on size 4, 5, 6). 45° rotation, CW to close. Tight close-off. Damper leakage is less than 2% of the terminal rated airflow at 3" w.g. (750 Pa).
- 1/2" (13) dia. plated steel drive shaft. An indicator mark on the end of the shaft shows damper position.
- Multi-point averaging Flow Sensor. Aluminum construction. Supplied with balancing tees.
- Rectangular discharge with slip and drive cleat duct connection.
- Full NEMA type-1 controls enclosure for factory mounted controls.
- 3/4" (19), dual density fiberglass insulation, exposed edges coated to prevent air erosion. Meets the requirements of NFPA

90A and UL 181.

Hot Water Coil Section:

- 1/2" (13) Copper tubes and aluminum ripple fins, 10 per inch.
- 1, 2, 3 or 4 row.
- Left or right hand connection. Determined by looking in direction of airflow (RH illustrated).
- 1/2" (13), 7/8" (22) or 1 3/8" (35) O.D. male solder sweat connections.

Digital Controls:

- ☐ Factory mounted (supplied by others)
 - ☐ Field mounted (supplied by others)
 - ☐ Nailor EZvav
- See separate submittal.

Options and Accessories:

- ☐ FG 13/16" (21) Steri-liner
- ☐ FG1 1" (25) Steri-liner
- ☐ FGJ 13/16" (21) Steri-liner w/perf.
- ☐ FG2 3/4" (19) Fiber-free liner

- ☐ FG3 1" (25) Fiber-free liner
- ☐ FJ 3/4" (19) Perforated metal liner/F. Glass
- ☐ FL 3/4" (19) Solid metal liner/F. Glass
- ☐ FT1 1" (25) D. D. Fiberglass liner
- ☐ FTL Low temperature construction
- ☐ FW No Liner
- ☐ FMI Removable insert type Flow Sensor
- ☐ Bottom access door
- ☐ 24 VAC Control transformer
- ☐ Toggle disconnect switch
- ☐ Hanger brackets
- ☐ Controls enclosure for field mounted controls
- ☐ Dust tight enclosure seal
- ☐ Ultra low leakage casing
- ☐ Special Features: _____



Intertek

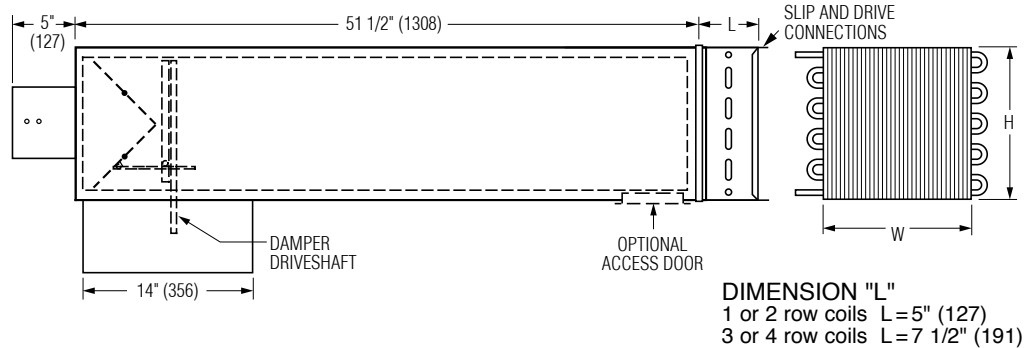
Page 1 of 2.

Dimensions are in inches (mm).

SCHEDULE TYPE:	
PROJECT:	
ENGINEER:	DATE
CONTRACTOR:	B SERIES
	SUPERSEDES
	DRAWING NO.
	7 - 11 - 25
	3000
	1 - 10 - 25
	D30RW-OC-2

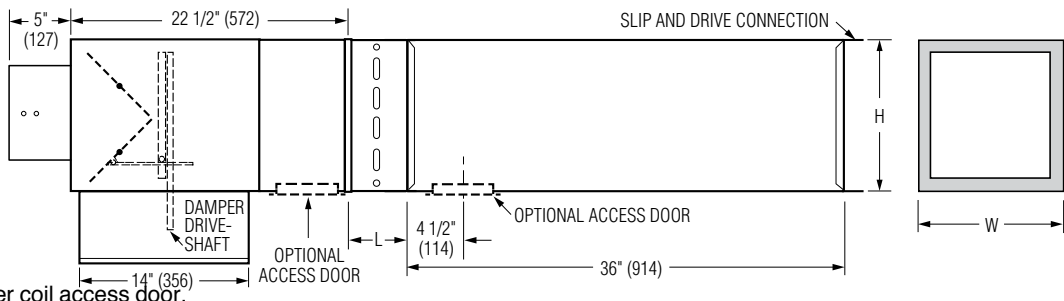
□ AT3I 3' Integral Sound Attenuator plus Hot Water Coil

- Single continuous length terminal construction minimizes casing leakage.
- Continuous internal insulation reduces insulation seams and minimizes airflow disturbance.
- Supplied with same liner as basic unit.



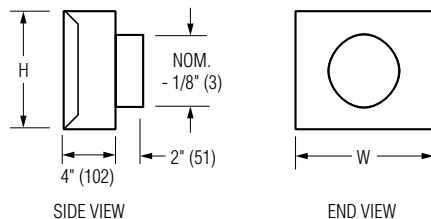
□ AT3S 3' Separate Discharge Sound Attenuator

- 22 ga. (0.86) galvanized steel construction.
- Slip and drive connection.
- Supplied with same liner as basic unit.
- Factory installed.

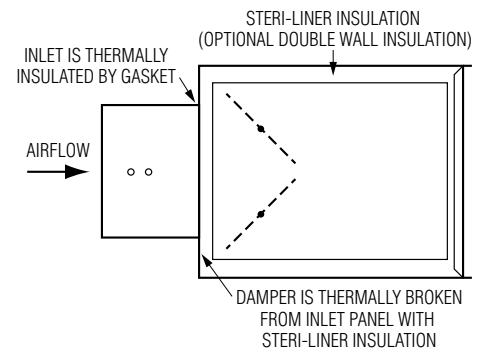


□ Downstream water coil access door.

□ FF Round Discharge Collar



□ FTL Low Temperature Construction



Dimensional Data

Unit Size	W	H	Access Door	FF Nominal Outlet Size
8	12 (305)	12 1/2 (318)	8 x 5	8 (203)
10	14 (356)	12 1/2 (318)	(203 x 127)	10 (254)
12	18 (457)	12 1/2 (318)	Flat Oval	12 (305)
14	24 (610)	12 1/2 (318)	12 x 6	14 (356)
16	28 (711)	12 1/2 (318)	(305 x 152)	16 (406)
24	38 (965)	18 (457)	Flat Oval	—

For Factory Mounted Valve/Piping Package Orientation, See drawing D30RWVP-1.

Page 2 of 2.

Dimensions are in inches (mm).

SCHEDULE TYPE:

PROJECT:

ENGINEER:

CONTRACTOR:

DATE

B SERIES

SUPERSEDES

DRAWING NO.

7 - 11 - 25

3000

1 - 10 - 25

D30RW-OC-2