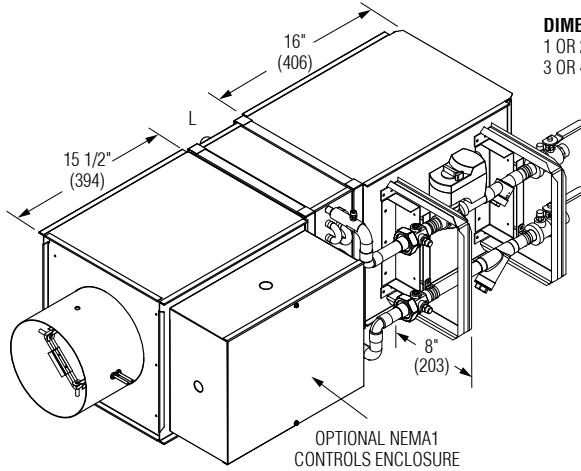


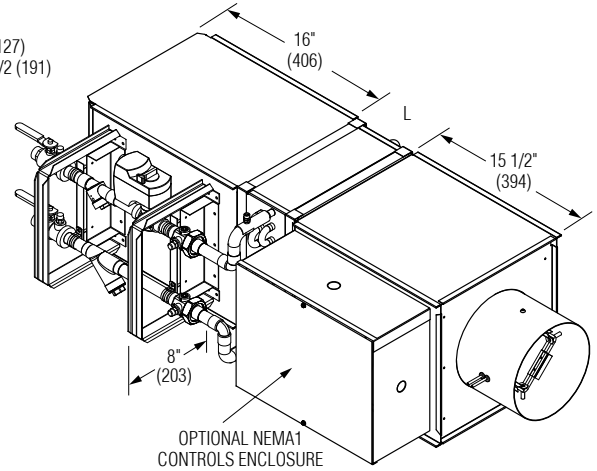


**SINGLE DUCT TERMINAL UNIT WITH  
HOT WATER REHEAT  
FACTORY MOUNTED VALVE / PIPING PACKAGE  
ORIENTATION  
MODELS: D30RW AND D31RW**

**OR - WR - VPNA**  
RIGHT HAND CONTROLS LOCATION &  
RIGHT HAND PIPING PACKAGE (TOWARDS DISCHARGE)

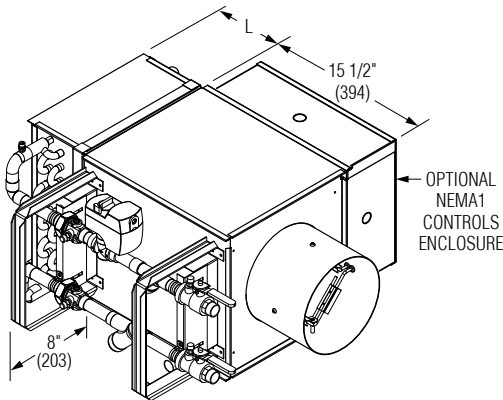


**OL - WL - VPNA**  
LEFT HAND CONTROLS LOCATION &  
LEFT HAND PIPING PACKAGE (TOWARDS DISCHARGE)

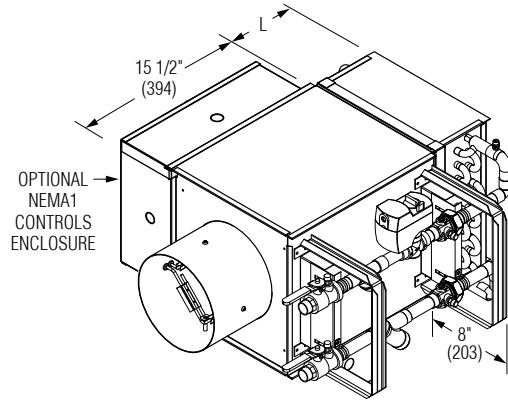


**DIMENSION L:**  
1 OR 2 ROW COILS, L = 5" (127)  
3 OR 4 ROW COILS, L = 7" 1/2 (191)

**OR - WL - VPNI**  
RIGHT HAND CONTROLS LOCATION &  
LEFT HAND PIPING PACKAGE (TOWARDS INLET)



**OL - WR - VPNI**  
LEFT HAND CONTROLS LOCATION &  
RIGHT HAND PIPING PACKAGE (TOWARDS INLET)



**NOTES:**

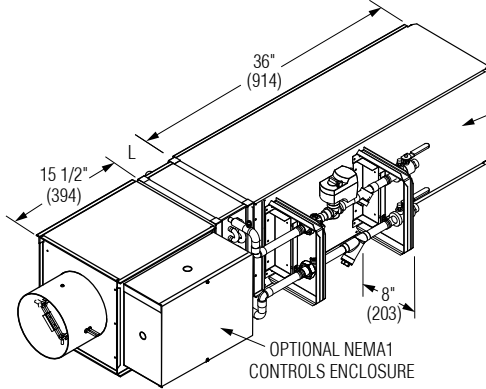
1. Valve/Piping packages are factory assembled, leakage tested and shipped as shown.
2. Factory mounted valve/piping package features robust mounting hardware with integrated carrying handles.
3. Refer to terminal unit submittal for unit size dimensions.
4. 16" (406) extension provided when controls enclosure and coil handing are on the same side. Extension is internally insulated to match terminal unit liner.

<b>SCHEDULE TYPE:</b>	Page 1 of 4.			
<b>PROJECT:</b>	Dimensions are in inches (mm).			
<b>ENGINEER:</b>	<b>DATE</b>	<b>B SERIES</b>	<b>SUPERSEDES</b>	<b>DRAWING NO.</b>
<b>CONTRACTOR:</b>	1 - 9 - 25	3000	12 - 6 - 24	D30RWVP-1

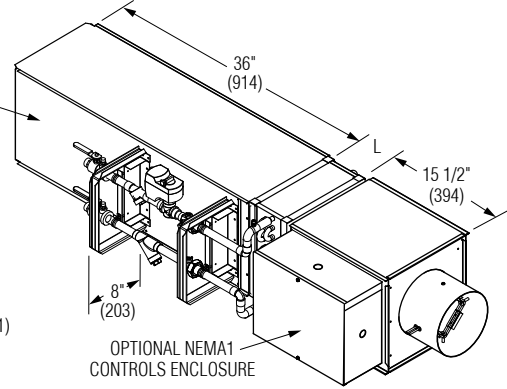


**SINGLE DUCT TERMINAL UNIT WITH  
HOT WATER REHEAT AND 3' ATTENUATOR  
FACTORY MOUNTED VALVE /PIPING PACKAGE  
ORIENTATION  
MODELS: D30RW AND D31RW**

**OR - AT3S - WR - VPND**  
RIGHT HAND CONTROLS LOCATION &  
RIGHT HAND PIPING PACKAGE (TOWARDS DISCHARGE)

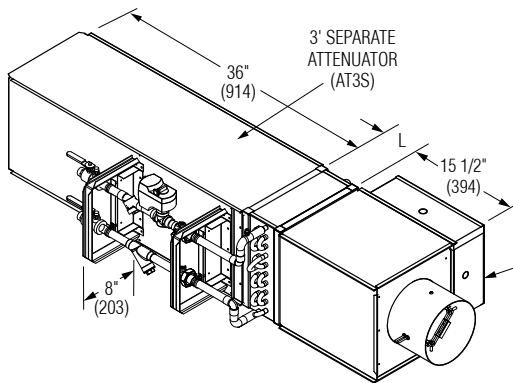


**OL - AT3S - WL - VPND**  
LEFT HAND CONTROLS LOCATION &  
LEFT HAND PIPING PACKAGE (TOWARDS DISCHARGE)

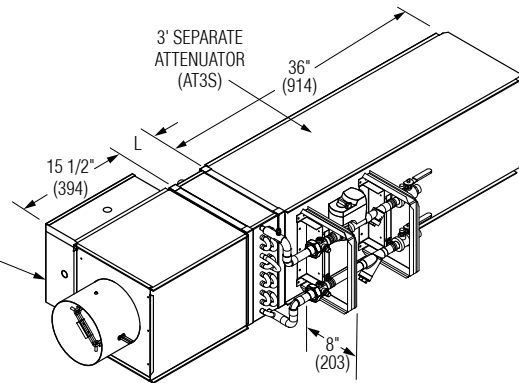


**DIMENSION L:**  
1 OR 2 ROW COILS, L = 5" (127)  
3 OR 4 ROW COILS, L = 7" 1/2 (191)

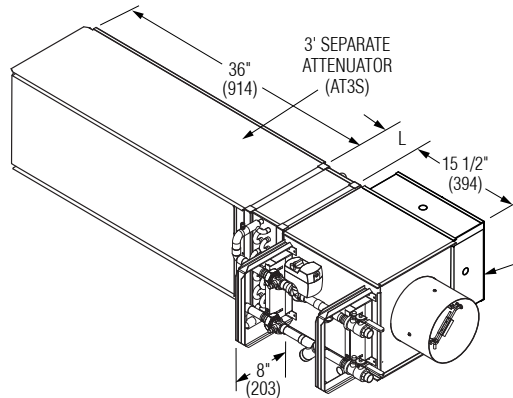
**OR - AT3S - WL - VPND**  
RIGHT HAND CONTROLS LOCATION &  
LEFT HAND PIPING PACKAGE (TOWARDS DISCHARGE)



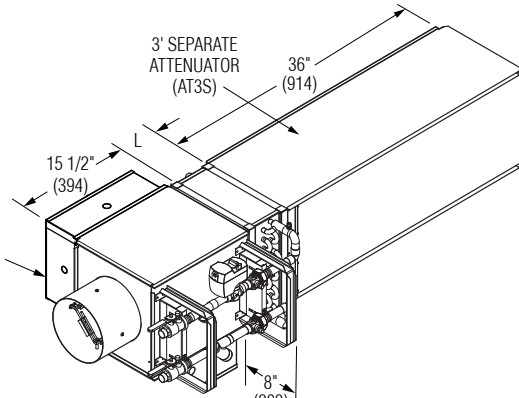
**OL - AT3S - WR - VPND**  
LEFT HAND CONTROLS LOCATION &  
RIGHT HAND PIPING PACKAGE (TOWARDS DISCHARGE)



**OR - AT3S - WL - VPNI**  
RIGHT HAND CONTROLS LOCATION &  
LEFT HAND PIPING PACKAGE (TOWARDS INLET)



**OL - AT3S - WR - VPNI**  
LEFT HAND CONTROLS LOCATION &  
RIGHT HAND PIPING PACKAGE (TOWARDS INLET)



**SCHEDULE TYPE:**

**PROJECT:**

**ENGINEER:**

**CONTRACTOR:**

Page 2 of 4.

Dimensions are in inches (mm).

**DATE**

**B SERIES**

**SUPERSEDES**

**DRAWING NO.**

1 - 9 - 25

3000

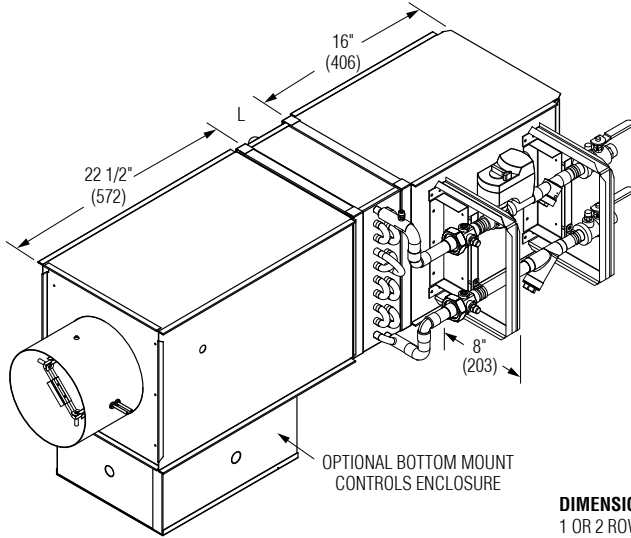
12 - 6 - 24

D30RWVP-1

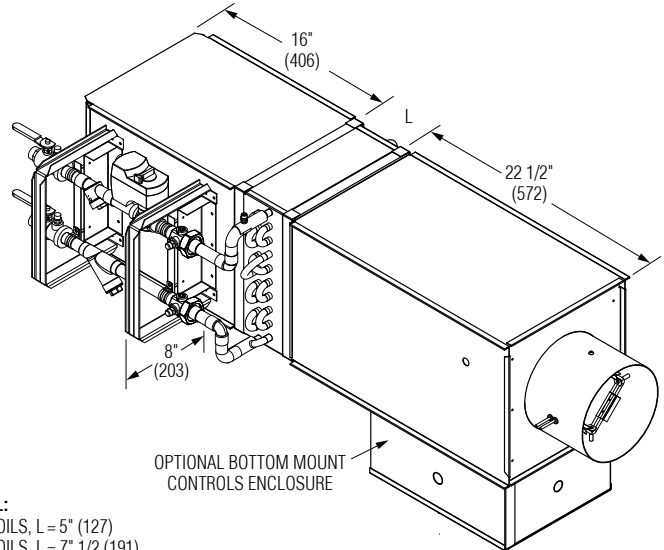


**SINGLE DUCT TERMINAL UNIT WITH  
HOT WATER REHEAT  
FACTORY MOUNTED VALVE / PIPING PACKAGE  
ORIENTATION  
MODELS: D30RW AND D31RW**

**OB - WR - VPNA**  
BOTTOM MOUNT CONTROLS LOCATION &  
RIGHT HAND PIPING PACKAGE (TOWARDS DISCHARGE)

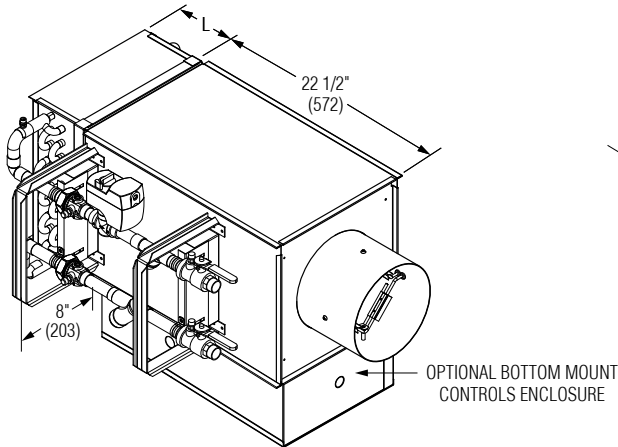


**OB - WL - VPNA**  
BOTTOM MOUNT CONTROLS LOCATION &  
LEFT HAND PIPING PACKAGE (TOWARDS DISCHARGE)

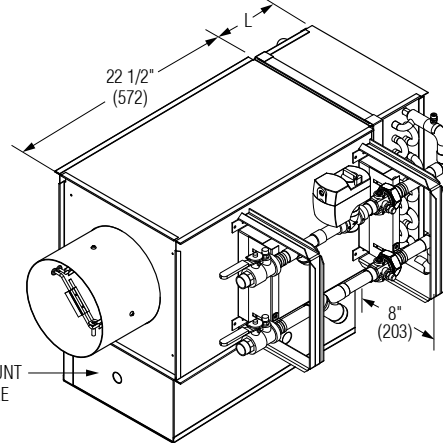


**DIMENSION L:**  
1 OR 2 ROW COILS, L = 5" (127)  
3 OR 4 ROW COILS, L = 7" 1/2 (191)

**OB - WL - VPNI**  
BOTTOM MOUNT CONTROLS LOCATION &  
LEFT HAND PIPING PACKAGE (TOWARDS INLET)



**OB - WR - VPNI**  
BOTTOM MOUNT CONTROLS LOCATION &  
RIGHT HAND PIPING PACKAGE (TOWARDS INLET)



**NOTES:**

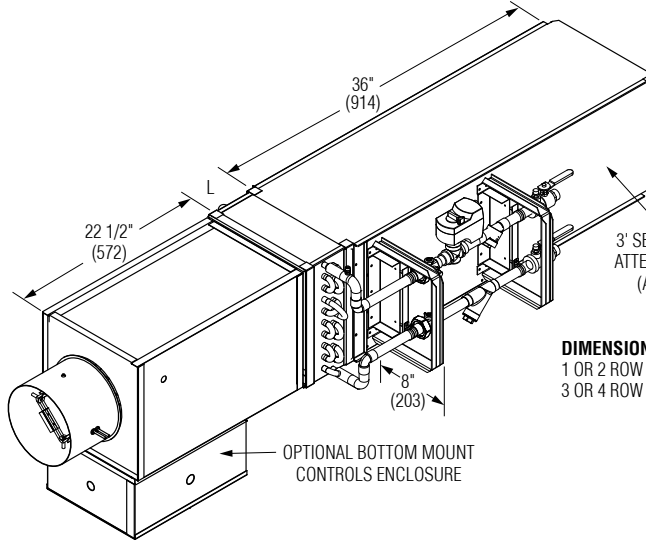
1. Valve/Piping packages are factory assembled, leakage tested and shipped as shown.
2. Factory mounted valve/piping package features robust mounting hardware with integrated carrying handles.
3. Refer to terminal unit submittal for unit size dimensions.
4. 16" (406) extension provided when controls enclosure and coil handing are on the same side. Extension is internally insulated to match terminal unit liner.

<b>SCHEDULE TYPE:</b>	Page 3 of 4.			
<b>PROJECT:</b>	Dimensions are in inches (mm).			
<b>ENGINEER:</b>	<b>DATE</b>	<b>B SERIES</b>	<b>SUPERSEDES</b>	<b>DRAWING NO.</b>
<b>CONTRACTOR:</b>	1 - 9 - 25	3000	12 - 6 - 24	D30RWVP-1

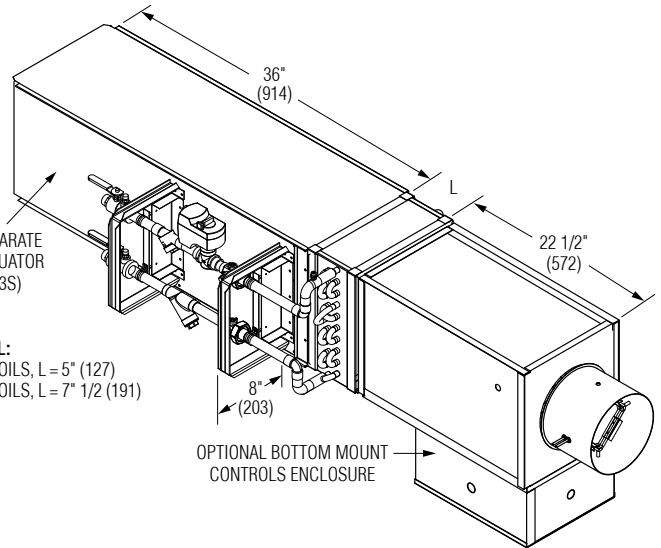


**SINGLE DUCT TERMINAL UNIT WITH  
HOT WATER REHEAT AND 3' ATTENUATOR  
FACTORY MOUNTED VALVE /PIPING PACKAGE  
ORIENTATION  
MODELS: D30RW AND D31RW**

**OB - AT3S - WR - VPND**  
BOTTOM MOUNT CONTROLS LOCATION &  
RIGHT HAND PIPING PACKAGE (TOWARDS DISCHARGE)

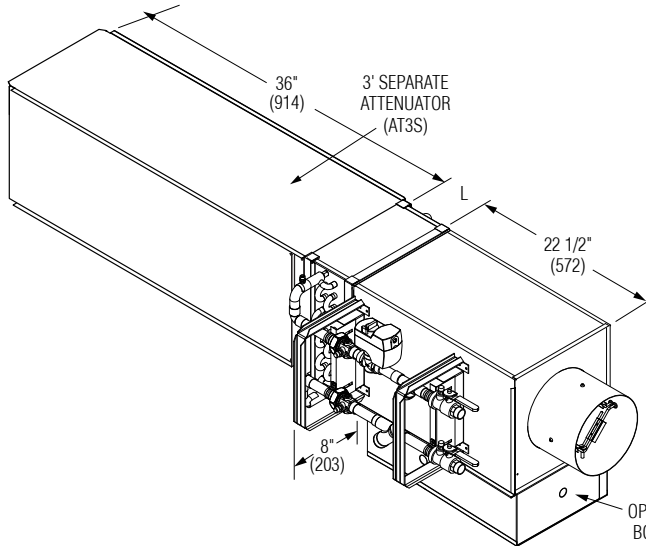


**OB - AT3S - WL - VPND**  
BOTTOM MOUNT CONTROLS LOCATION &  
LEFT HAND PIPING PACKAGE (TOWARDS DISCHARGE)

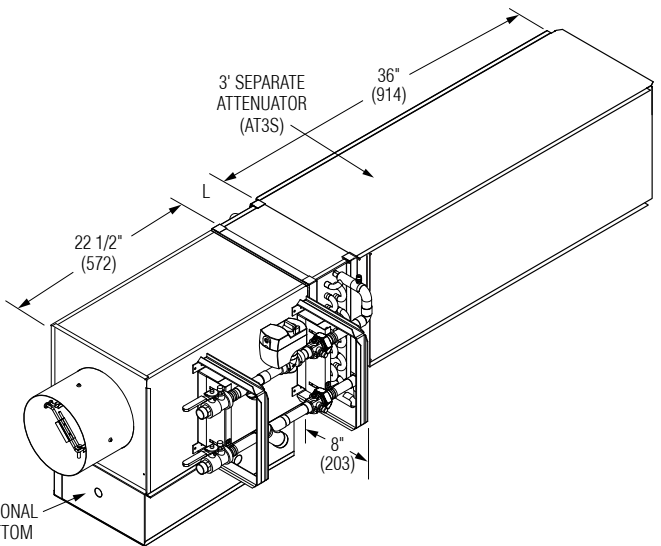


**DIMENSION L:**  
1 OR 2 ROW COILS, L = 5" (127)  
3 OR 4 ROW COILS, L = 7" 1/2 (191)

**OB - AT3S - WL - VPNI**  
BOTTOM MOUNT CONTROLS LOCATION &  
LEFT HAND PIPING PACKAGE (TOWARDS INLET)



**OB - AT3S - WR - VPNI**  
BOTTOM MOUNT CONTROLS LOCATION &  
RIGHT HAND PIPING PACKAGE (TOWARDS INLET)



**NOTES:**

1. Valve/Piping packages are factory assembled, leakage tested and shipped as shown.
2. Factory mounted valve/piping package features robust mounting hardware with integrated carrying handles.
3. Refer to terminal unit submittal for unit size dimensions.

<b>SCHEDULE TYPE:</b>	
<b>PROJECT:</b>	
<b>ENGINEER:</b>	
<b>CONTRACTOR:</b>	

Page 4 of 4.  
Dimensions are in inches (mm).

DATE	B SERIES	SUPERSEDES	DRAWING NO.
1 - 9 - 25	3000	12 - 6 - 24	D30RWVP-1