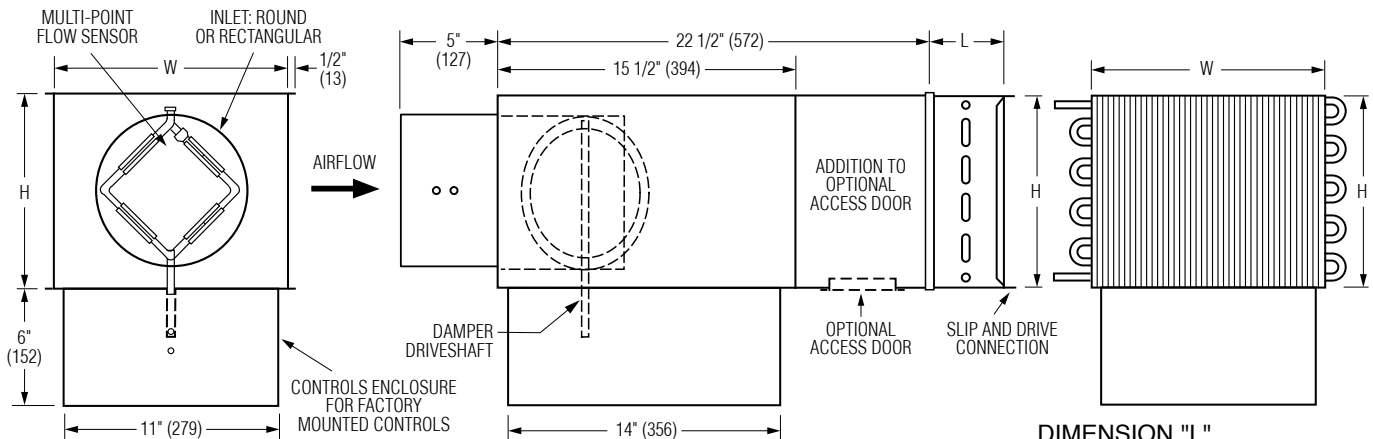




SINGLE DUCT TERMINAL UNIT WITH HOT WATER REHEAT DIGITAL CONTROL • PRESSURE INDEPENDENT VARIABLE OR CONSTANT VOLUME MODEL: D31RW WITH BOTTOM MOUNT CONTROLS LOCATION (OPTION OB)



Dimensional Data

Unit Size	Airflow Range* cfm (l/s)	W	H	Inlet Size	Coil Connections			
					1 Row	2 Row	3 Row	4 Row
4	0 – 225 (0 – 106)	12 (305)	8 (203)	3 7/8 (98) Round	1/2 (13)	7/8 (22)	7/8 (22)	7/8 (22)
5	0 – 400 (0 – 189)	12 (305)	8 (203)	4 7/8 (124) Round	1/2 (13)	7/8 (22)	7/8 (22)	7/8 (22)
6	0 – 550 (0 – 260)	12 (305)	8 (203)	5 7/8 (149) Round	1/2 (13)	7/8 (22)	7/8 (22)	7/8 (22)
7	0 – 800 (0 – 378)	12 (305)	10 (254)	6 7/8 (175) Round	1/2 (13)	7/8 (22)	7/8 (22)	7/8 (22)
8	0 – 1100 (0 – 519)	12 (305)	10 (254)	7 7/8 (200) Round	1/2 (13)	7/8 (22)	7/8 (22)	7/8 (22)
9	0 – 1400 (0 – 661)	14 (356)	12 1/2 (318)	8 7/8 (225) Round	1/2 (13)	7/8 (22)	7/8 (22)	7/8 (22)
10	0 – 1840 (0 – 868)	14 (356)	12 1/2 (318)	9 7/8 (251) Round	1/2 (13)	7/8 (22)	7/8 (22)	7/8 (22)
12	0 – 2500 (0 – 1180)	16 (406)	15 (381)	11 7/8 (302) Round	7/8 (22)	7/8 (22)	7/8 (22)	7/8 (22)
14	0 – 3370 (0 – 1590)	20 (508)	17 1/2 (508)	13 7/8 (352) Round	7/8 (22)	7/8 (22)	7/8 (22)	7/8 (22)
16	0 – 4525 (0 – 2135)	24 (610)	18 (457)	15 7/8 (403) Round	7/8 (22)	7/8 (22)	7/8 (22)	7/8 (22)
24 x 16	0 – 8330 (0 – 3931)	38 (965)	18 (457)	23 7/8 x 15 7/8 (606 x 403) Rect.	7/8 (22)	7/8 (22)	1 3/8 (35)	1 3/8 (35)

* Maximum airflow limit is based upon 1.5" w.g. (373 Pa) max. differential pressure signal from Flow Sensor.

Standard Features:

- Bottom mount controls location with vertical drive shaft (option code OB).
- 22 ga. (0.86) galvanized steel casing, mechanically sealed, low leakage construction. Leakage is less than 1% of the terminal rated airflow at 1" w.g. (250 Pa).
- 2 x 20 ga. (0.86) round laminated butterfly damper with a polyurethane peripheral gasket. 90° rotation, CW to close. Tight shut-off. Damper leakage is less the 1% of the terminal rated airflow at 3" w.g. (750 pa.) and less than 2% at 6" w.g. (1500 pa.) as tested in accordance with ANSI / ASHRAE Standard 130.
- 1/2" (13) dia. plated steel drive shaft. An indicator mark on the end of the shaft shows damper position.
- Unit sizes 4–16 feature round inlet collars.
- Multi-point averaging Diamond Flow Sensor. Supplied with balancing tees (4 and 5 are Annubar).
- Rectangular discharge with slip and drive cleat duct connection.

- Full NEMA 1 type controls enclosure for factory mounted controls.

- 3/4" (19), dual density fiberglass insulation, exposed edges coated to prevent air erosion. Meets the requirements of NFPA 90A and UL 181.

Hot Water Coil Section:

- 1/2" (13) Copper tubes and aluminum ripple fins, 10 per inch.
- 1, 2, 3 or 4 row.
- Left or right hand connection. Determined by looking in direction of airflow (RH illustrated).
- 1/2" (13), 7/8" (22) or 1 3/8" (35) O.D. male solder sweat connections.

Digital Controls:

- ☐ Factory mounted (supplied by others)
- ☐ Field mounted (supplied by others)
- ☐ Nailor EZvav. See separate submittal.

Options and Accessories:

- ☐ FG 13/16" (21) Steri-liner
- ☐ FG1 1" (25) Steri-liner
- ☐ FGJ 13/16" (21) Steri-liner w/perf.
- ☐ FG2 3/4" (19) Fiber-free liner



Intertek

- ☐ FG3 1" (25) Fiber-free liner
- ☐ FJ 3/4" (19) Perforated metal liner/F. Glass
- ☐ FL 3/4" (19) Solid metal liner/F. Glass
- ☐ FT1 1" (25) D. D. Fiberglass liner
- ☐ FTL Low temperature construction
- ☐ FW No Liner
- ☐ 20 ga. (1.00) casing
- ☐ 24 VAC control transformer
- ☐ Toggle disconnect switch
- ☐ Dust tight enclosure seal
- ☐ Bottom access door
- ☐ Hanger brackets
- ☐ Ultra low leakage casing
- ☐ Controls enclosure for field mounted controls

Flow Sensor:

- ☐ Diamond Flow Sensor, removable
- ☐ Cross Flow Sensor
- ☐ Cross Flow Sensor, removable
- ☐ Special features: _____

Page 1 of 2.

Dimensions are in inches (mm).

SCHEDULE TYPE:

PROJECT:

ENGINEER:

CONTRACTOR:

DATE

B SERIES

SUPERSEDES

DRAWING NO.

7 - 11 - 25

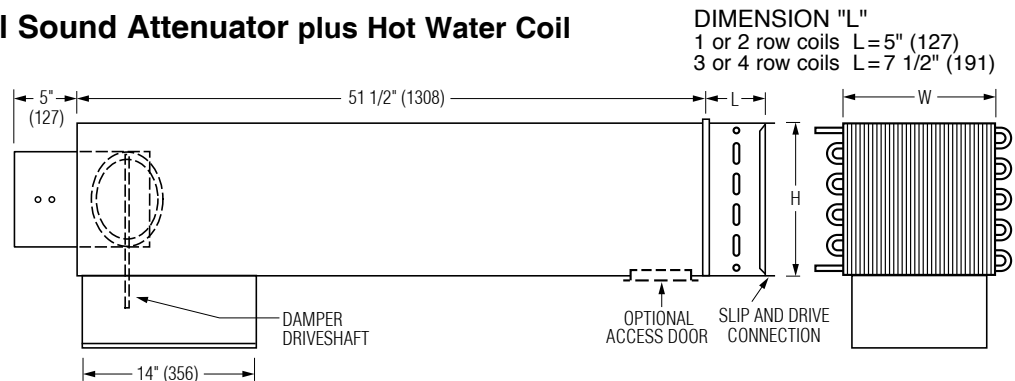
3100

1 - 10 - 25

D31RW-2

☐ **AT3I 3' Integral Sound Attenuator plus Hot Water Coil**

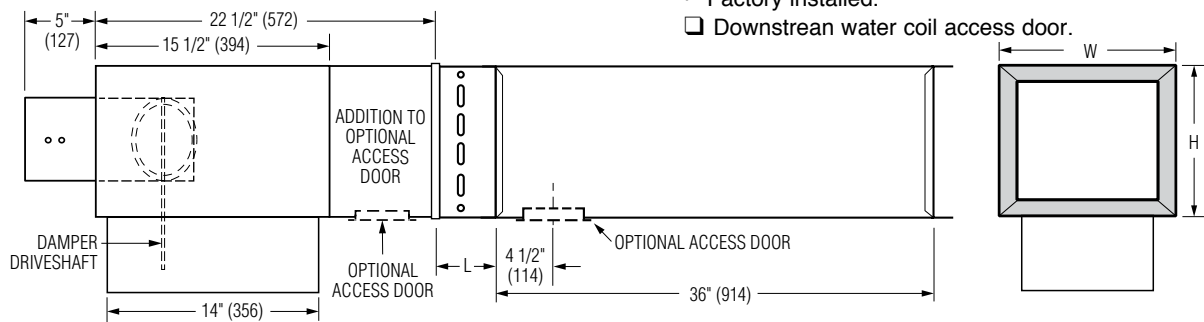
- Single continuous length terminal construction minimizes casing leakage.
- Continuous internal insulation reduces insulation seams and minimizes airflow disturbance.
- Supplied with same liner as basic unit.



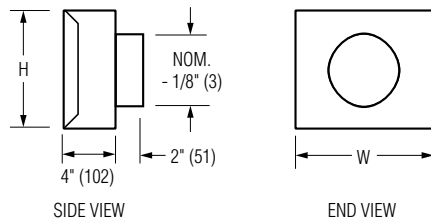
☐ **AT3S 3' Separate Discharge Sound Attenuator**

- 22 ga. (0.86) galvanized steel construction.
- Slip and drive connection.
- Supplied with same liner as basic unit.
- Factory installed.

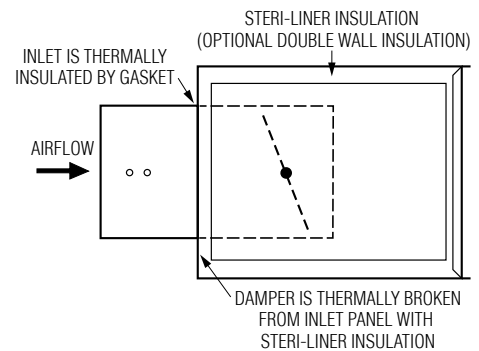
☐ Downstream water coil access door.



☐ **FF Round Discharge Collar**



☐ **FTL Low Temperature Construction**



Dimensional Data

Unit Size	W	H	Access Door	FF Nominal Outlet Size
4, 5, 6	12 (305)	8 (203)	8 x 5 (203 x 127) Flat Oval	4, 5, 6 (102, 127, 152)
7, 8	12 (305)	10 (254)		7, 8 (178, 203)
9, 10	14 (356)	12 1/2 (318)		9, 10 (229, 254)
12	16 (406)	15 (381)	12 x 6 (305 x 152) Flat Oval	12 (305)
14	20 (508)	17 1/2 (445)		14 (356)
16	24 (610)	18 (457)		16 (406)
24 x 16	38 (965)	18 (457)		—

For Factory Mounted Valve/Piping Package Orientation, See drawing D30RWVP-1.

SCHEDULE TYPE:

PROJECT:

ENGINEER:

CONTRACTOR:

Page 2 of 2.
 Dimensions are in inches (mm).

DATE	B SERIES	SUPERSEDES	DRAWING NO.
7 - 11 - 25	3100	1 - 10 - 25	D31RW-2