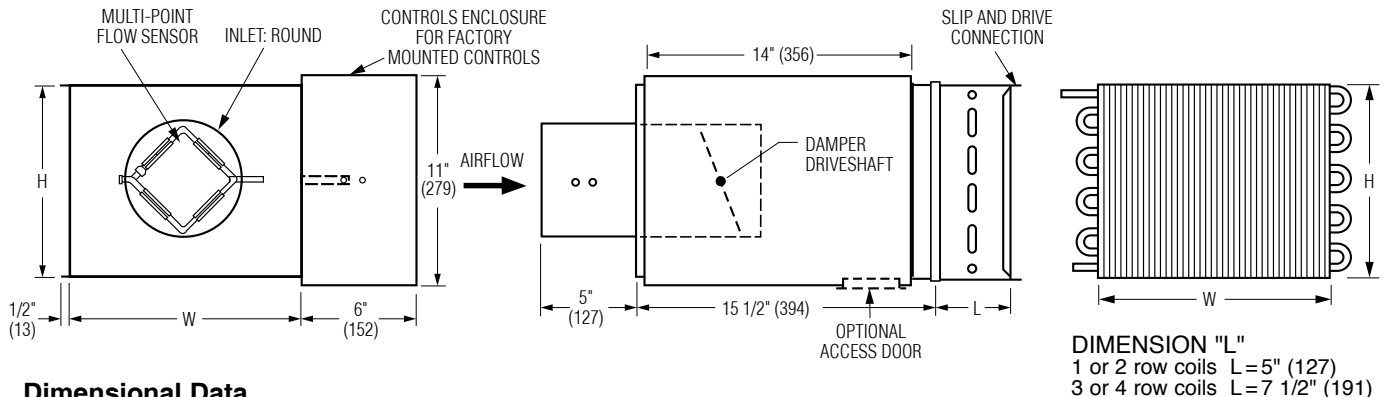




**SINGLE DUCT TERMINAL UNIT WITH
HOT WATER REHEAT**
OVERSIZED CASING (LARGER WATER COIL)
DIGITAL CONTROLS • PRESSURE INDEPENDENT
CONSTANT OR VARIABLE VOLUME
MODEL: D31RW



Dimensional Data

Unit Size	Inlet Size	Airflow Range* cfm (l/s)	W	H	Inlet Size	Coil Connections			
						1 Row	2 Row	3 Row	4 Row
8	4	0 – 225 (0 – 106)	12 (305)	10 (254)	3 7/8 (98) Round	1/2 (13)	7/8 (22)	7/8 (22)	7/8 (22)
	5	0 – 400 (0 – 189)			4 7/8 (124) Round	1/2 (13)	7/8 (22)	7/8 (22)	7/8 (22)
	6	0 – 550 (0 – 260)			5 7/8 (149) Round	1/2 (13)	7/8 (22)	7/8 (22)	7/8 (22)
10	7	0 – 800 (0 – 378)	14 (356)	12 1/2 (318)	6 7/8 (175) Round	1/2 (13)	7/8 (22)	7/8 (22)	7/8 (22)
	8	0 – 1100 (0 – 519)			7 7/8 (200) Round	1/2 (13)	7/8 (22)	7/8 (22)	7/8 (22)
12	9	0 – 1400 (0 – 661)	16 (406)	15 (381)	8 7/8 (225) Round	1/2 (13)	7/8 (22)	7/8 (22)	7/8 (22)
	10	0 – 1840 (0 – 868)			9 7/8 (251) Round	1/2 (13)	7/8 (22)	7/8 (22)	7/8 (22)
14	12	0 – 2500 (0 – 1180)	20 (508)	17 1/2 (508)	11 7/8 (302) Round	1/2 (13)	7/8 (22)	7/8 (22)	7/8 (22)
16	14	0 – 3370 (0 – 1590)	24 (610)	18 (457)	13 7/8 (352) Round	7/8 (22)	7/8 (22)	7/8 (22)	7/8 (22)
24	16	0 – 4525 (0 – 2135)	38 (965)	18 (457)	15 7/8 (403) Round	7/8 (22)	7/8 (22)	1 3/8 (35)	1 3/8 (35)



* Maximum airflow limit is based upon 1.5" w.g. (373 Pa) max. differential pressure signal from Flow Sensor.

Standard Features:

- 22 ga. (0.86) galvanized steel casing, mechanically sealed, low leakage construction. Leakage is less than 1% of the terminal rated airflow at 1" w.g. (250 Pa).
- 2 x 20 ga. (0.86) round laminated butterfly damper with a polyurethane peripheral gasket. 90° rotation, CW to close. Tight shut-off. Damper leakage is less the 1% of the terminal rated airflow at 3" w.g. (750 pa.) and less than 2% at 6" w.g. (1500 pa.) as tested in accordance with ANSI / ASHRAE Standard 130.
- 1/2" (13) dia. plated steel drive shaft. An indicator mark on the end of the shaft shows damper position.
- Unit sizes 4–16 feature round inlet collars.
- Multi-point averaging Diamond Flow Sensor. Supplied with balancing tees (4 and 5 are Annubar).
- Rectangular discharge with slip and drive cleat duct connection.
- Full NEMA 1 type controls enclosure for factory mounted controls.
- 3/4" (19), dual density fiberglass insulation, exposed edges coated to prevent air erosion. Meets the requirements of NFPA 90A and UL 181.

- Right-hand controls location is standard (shown) when looking in direction of airflow. Optional left hand controls mounting is available.
- Model D31RW can be installed horizontally, vertical or at any angle. Operation is not affected by position.

Hot Water Coil Section:

- 1/2" (13) Copper tubes and aluminum ripple fins, 10 per inch.
- 1, 2, 3 or 4 row.
- Left or right hand connection. Determined by looking in direction of airflow (RH illustrated).
- 1/2" (13), 7/8" (22) or 1 3/8" (35) O.D. male solder sweat connections.

Digital Controls:

- ☐ Factory mounted (supplied by others)
 - ☐ Field mounted (supplied by others)
 - ☐ Nailor EZvav
- See separate submittal.



Options and Accessories:

- ☐ FG 13/16" (21) Steri-liner
 - ☐ FG1 1" (25) Steri-liner
 - ☐ FGJ 13/16" (21) Steri-liner w/perf.
 - ☐ FG2 3/4" (19) Fiber-free liner
 - ☐ FG3 1" (25) Fiber-free liner
 - ☐ FJ 3/4" (19) Perforated metal liner/F. Glass
 - ☐ FL 3/4" (19) Solid metal liner/F. Glass
 - ☐ FT1 1" (25) D. D. Fiberglass liner
 - ☐ FTL Low temperature construction
 - ☐ FW No Liner
 - ☐ 20 ga. (1.00) casing
 - ☐ 24 VAC control transformer
 - ☐ Toggle disconnect switch
 - ☐ Dust tight enclosure seal
 - ☐ Bottom access door
 - ☐ Hanger brackets
 - ☐ Ultra low leakage casing
 - ☐ Controls enclosure for field mounted controls
- Flow Sensor:**
- ☐ Diamond Flow Sensor, removable
 - ☐ Cross Flow Sensor
 - ☐ Cross Flow Sensor, removable
- Seismic Certification:**
- ☐ Seismic Source International (Standard)
 - ☐ HCAI (formerly OSHPD, California)
 - ☐ Special features: _____

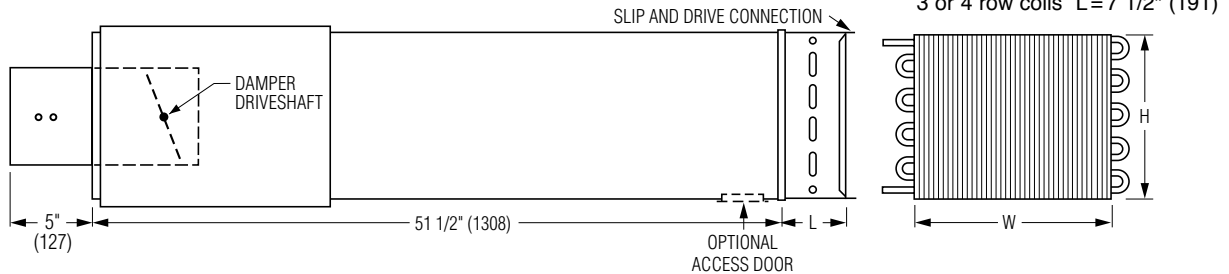
Page 1 of 2.

Dimensions are in inches (mm).

SCHEDULE TYPE:				
PROJECT:				
ENGINEER:	DATE	B SERIES	SUPERSEDES	DRAWING NO.
CONTRACTOR:	7 - 11 - 25	3100	1 - 10 - 25	D31RW-OC

☐ **AT3I 3' Integral Sound Attenuator plus Hot Water Coil**

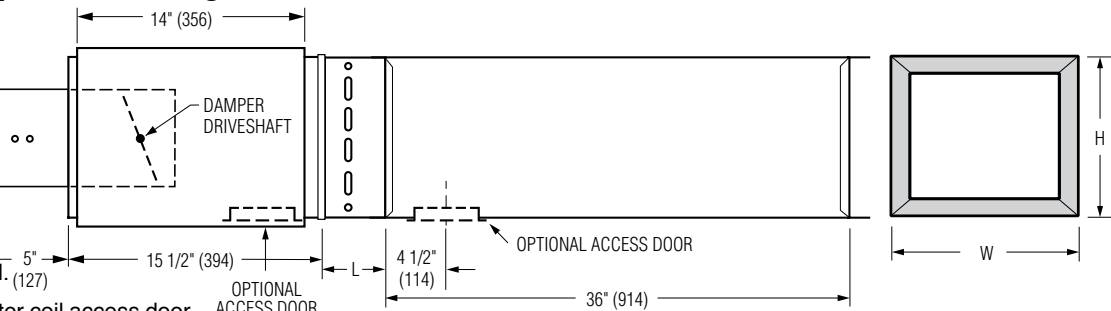
- Single continuous length terminal construction minimizes casing leakage.
- Continuous internal insulation reduces insulation seams and minimizes airflow disturbance.



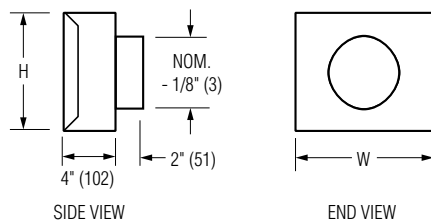
☐ **AT3S 3' Separate Discharge Sound Attenuator**

- 22 ga. (0.86) galvanized steel construction.
- Slip and drive connection.
- Supplied with same liner as basic unit.
- Factory installed.

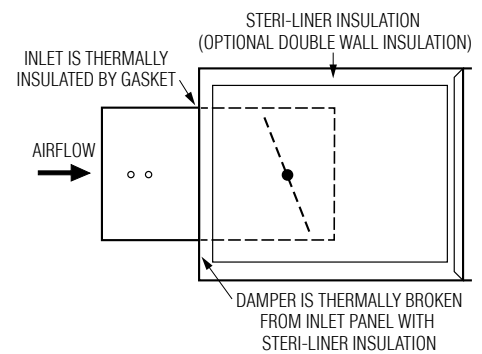
☐ Downstream water coil access door.



☐ **FF Round Discharge Collar**



☐ **FTL Low Temperature Construction**



Dimensional Data

Unit Size	W	H	Access Door	FF Nominal Outlet Size
8	12 (305)	12 1/2 (318)	8 x 5 (203 x 127) Flat Oval	8 (203)
10	14 (356)	12 1/2 (318)		10 (254)
12	18 (457)	12 1/2 (318)		12 (305)
14	24 (610)	12 1/2 (318)		14 (356)
16	28 (711)	12 1/2 (318)	12 x 6 (305 x 152) Flat Oval	16 (406)
24	38 (965)	18 (457)		—
24 x 16	38 (965)	18 (457)		—

For Factory Mounted Valve/Piping Package Orientation, See drawing D30RWVP-1.

SCHEDULE TYPE:

PROJECT:

ENGINEER:

CONTRACTOR:

Page 2 of 2.

Dimensions are in inches (mm).

DATE	B SERIES	SUPERSEDES	DRAWING NO.
7 - 11 - 25	3100	1 - 10 - 25	D31RW-OC