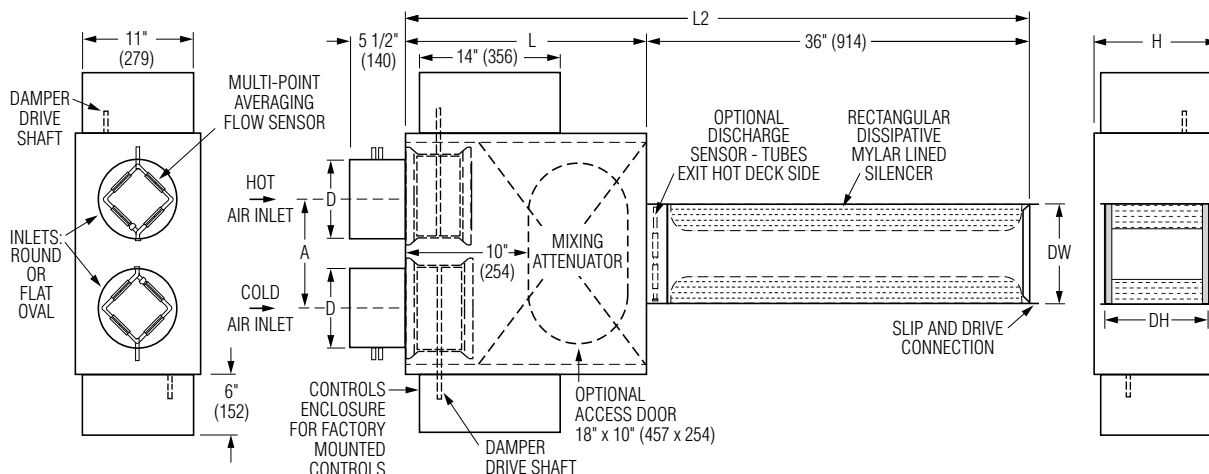




DUAL DUCT TERMINAL UNIT WITH COMPACT MIXING ATTENUATOR AND DISSIPATIVE SILENCER
HOSPITAL GRADE • SUPER QUIET
DIGITAL CONTROL
MODEL: D3230HQ



Intertek

Dimensional Data

Unit Size	Total Airflow Range, CFM (l/s) Digital Controls	W	H	L	L2	A	Inlet Dia. D	Outlet DW x DH
4	0 – 225 (0 – 106)	24 (610)	10 (254)	24 (610)	60 (1524)	11 (279)	3 7/8 (98)	
5	0 – 400 (0 – 189)	24 (610)	10 (254)	24 (610)	60 (1524)	11 (279)	4 7/8 (124)	12 x 8 (305 x 203)
6	0 – 550 (0 – 260)	24 (610)	10 (254)	24 (610)	60 (1524)	11 (279)	5 7/8 (149)	
7	0 – 800 (0 – 378)	24 (610)	12 1/2 (318)	24 (610)	60 (1524)	11 (279)	6 7/8 (175)	14 x 10 (356 x 254)
8	0 – 1100 (0 – 519)	24 (610)	12 1/2 (318)	24 (610)	60 (1524)	11 (279)	7 7/8 (200)	
9	0 – 1400 (0 – 661)	34 (864)	14 (356)	34 (864)	70 (1778)	16 1/8 (410)	8 7/8 (225)	18 x 12 (457 x 305)
10	0 – 1840 (0 – 868)	34 (864)	14 (356)	34 (864)	70 (1778)	16 1/8 (410)	9 7/8 (251)	
12	0 – 2500 (0 – 1180)	34 (864)	16 (406)	34 (864)	70 (1778)	16 1/8 (410)	11 7/8 (302)	22 x 14 (559 x 356)
14	0 – 3370 (0 – 1590)	42 (1067)	18 (457)	38 (965)	71 (1880)	20 1/8 (511)	13 7/8 (353)	26 x 16 (660 x 406)
16	0 – 4525 (0 – 2135)	42 (1067)	18 (457)	38 (965)	71 (1880)	20 1/8 (511)	15 7/8 (403)	30 x 16 (762 x 406)

Standard Features:

- 22 ga. (0.86) zinc coated steel casing, mechanically sealed, low leakage construction.
- Low leakage opposed blade dampers with blade and jamb seals (single blade on size 4, 5, 6). 90° rotation, CW to close. Damper leakage is less than 1% of the terminal rated airflow at 6" w.g. (1.5 kPa).
- 1/2" (13) dia. plated steel drive shaft. An indicator mark on the end of the shaft shows damper position.
- Integral mixing attenuator with baffles. 1:12 minimum mixing efficiency.
- Rectangular discharge.
- Full NEMA1 type enclosure for factory mounted controls.
- VAV section is lined with 13/16" (21), thick, 4 lb. density Steri-Liner insulation. Fiberglass with a reinforced aluminum FSK facing. Meets the requirements of NFPA

- 90A, UL 181 and ASTM C655.
- Two multi-point averaging Diamond Flow Sensors. Aluminum construction. Supplied with balancing tees. Location must be specified based upon control sequence. Choice of location:
 - Cold and hot duct inlet.
 - Hot duct inlet and downstream total discharge.
 - Cold duct inlet and downstream total discharge.
- Choice of right or left-hand cold duct location. Unit is flippable. Hand of unit is determined by location of cold duct looking in direction of airflow. Right-hand unit illustrated.
- Unequal inlet sizes are available. Casing is governed by the larger inlet size.
- Silencer Section:**
 - Designed to mate with VAV section for optimum performance

- and super quiet operation.
- Optimized internal baffle geometry reduces self-generated noise, minimizes pressure drop and maximizes acoustic attenuation.
- 22 ga. (0.86) coated steel perforated baffles encapsulate fiberglass acoustic media. Mylar lining with acoustical spacer isolates material from airstream.
- Integral Steri-Liner insulation on top and bottom optimize sound reduction and eliminate the need for external field applied duct wrap.
- OPTIONS:**
- Digital Controls:**
 - Factory mounted (supplied by others)
 - Field mounted (supplied by others)
 - Nailor EZvav. See separate submittal.

- Liner:**
 - Steri-liner
 - Fiber-free
 - Perforated metal
 - Solid metal
 - 1" (25) fiberglass
- Other:**
 - Cross flow sensors.
 - Removable flow sensors.
 - Three flow sensors (hot, cold, and discharge) for DDC controls contractor flexibility.
 - 24 VAC control transformer.
 - 20 ga. (1.00) construction.
 - Toggle disconnect switch.
 - Bottom access door (Model 0800-M1).
 - Controls enclosure for field mounted controls.
 - Hanger brackets.
 - Dust tight enclosure seal.
 - Factory wrapped inlets and outlet.
 - Hanger brackets.
 - Special Features:

Dimensions are in inches (mm).

SCHEDULE TYPE:				
PROJECT:				
ENGINEER:	DATE	B SERIES	SUPERSEDES	DRAWING NO.
CONTRACTOR:	2 - 6 - 23	3200	1 - 26 - 22	D3230HQ