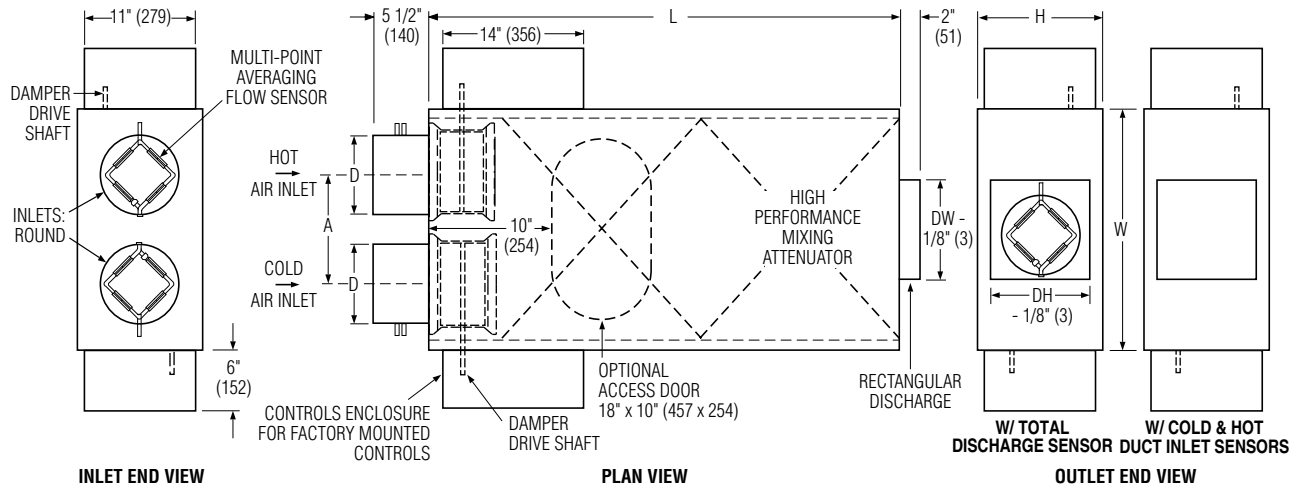




**DUAL DUCT TERMINAL UNIT WITH
HIGH EFFICIENCY MIXING ATTENUATOR
DIGITAL CONTROL
MODEL: D3240 "BLENDMASTER™"**



Dimensional Data

Unit Size	Airflow Range, cfm (l/s) Digital/Analog Controls	W	H	L	A	Inlet Dia. D	Outlet DW x DH
4	0 – 225/180 (0 – 106/85)	24 (610)	10 (254)	47 (1194)	11 (279)	3 7/8 (98)	
5	0 – 400/325 (0 – 189/153)	24 (610)	10 (254)	47 (1194)	11 (279)	4 7/8 (124)	8 x 8 (203 x 203)
6	0 – 550/450 (0 – 260/212)	24 (610)	10 (254)	47 (1194)	11 (279)	5 7/8 (149)	
7	0 – 800/650 (0 – 378/307)	24 (610)	12 1/2 (318)	47 (1194)	11 (279)	6 7/8 (175)	10 x 10 (254 x 254)
8	0 – 1100/900 (0 – 519/425)	24 (610)	12 1/2 (318)	47 (1194)	11 (279)	7 7/8 (200)	
9	0 – 1400/1150 (0 – 661/543)	34 (864)	14 (356)	60 (1524)	16 1/8 (410)	8 7/8 (225)	14 x 12 (356 x 305)
10	0 – 1840/1500 (0 – 868/708)	34 (864)	14 (356)	60 (1524)	16 1/8 (410)	9 7/8 (251)	
12	0 – 2500/2050 (0 – 1180/967)	34 (864)	16 (406)	60 (1524)	16 1/8 (410)	11 7/8 (302)	18 x 14 (457 x 356)
14	0 – 3370/2750 (0 – 1590/1298)	42 (1067)	18 (457)	72 (1829)	20 1/8 (511)	13 7/8 (353)	22 x 16 (559 x 406)



Intertek

Standard Features:

- 22 ga. (0.86) zinc coated steel casing, mechanically sealed, low leakage construction.
- Low leakage opposed blade dampers with blade and jamb seals (single blade on size 4, 5, 6). 90° rotation, CW to close. Damper leakage is less than 1% of the terminal rated airflow at 6" w.g. (1.5 kPa).
- 1/2" (13) dia. plated steel drive shaft. An indicator mark on the end of the shaft shows damper position.
- Integral mixing attenuator with baffles. 1:30 minimum mixing efficiency.
- Rectangular discharge.
- Full NEMA1 type enclosure for factory mounted controls.
- 3/4" (19), dual density insulation, exposed edges

- coated to prevent air erosion. Meets the requirements of NFPA 90A and UL 181.
- Two multi-point averaging Diamond Flow Sensors. Aluminum construction. Supplied with balancing tees. Location must be specified based upon control sequence. Choice of location:
 - Cold and hot duct inlet.
 - Hot duct inlet and downstream total discharge.
 - Cold duct inlet and downstream total discharge.
- Choice of right or left-hand cold duct location. Unit is flippable. Hand of unit is determined by location of cold duct looking in direction of airflow. Right-hand unit illustrated.
- Unequal inlet sizes are

available. Casing is governed by the larger inlet size.

OPTIONS:

Digital Controls:

- Factory mounted (supplied by others)
- Field mounted (supplied by others)
- Nailor EZvav. See separate submittal.

Liner:

- Steri-liner
- Fiber-free
- Perforated metal
- Solid metal
- 1" (25) fiberglass

Other:

- Cross flow sensors.
- Removable flow sensors.
- 24 VAC control transformer.

- 20 ga. (1.00) construction.
 - Toggle disconnect switch.
 - Bottom access door (Model 0800-M1).
 - Controls enclosure for field mounted controls.
 - Hanger brackets.
 - Dust tight enclosure seal.
 - Factory wrapped inlets and outlet.
 - Hanger brackets.
- Seismic Certification:**
- Seismic Source International (Standard)
 - HCAI (formerly OSHPD, California)
 - Special Features: _____



SCHEDULE TYPE:
PROJECT:
ENGINEER:
CONTRACTOR:

Page 1 of 1. Dimensions are in inches (mm)

DATE	B SERIES	SUPERSEDES	DRAWING NO.
2 - 6 - 23	3200	3 - 9 - 18	D3240