



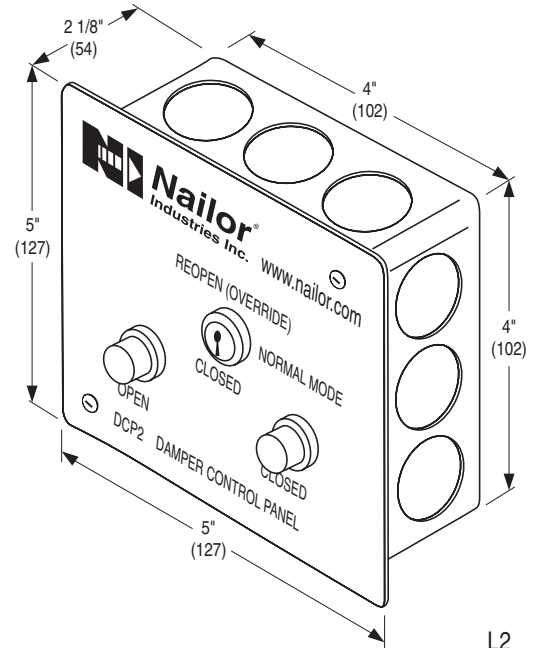
DAMPER CONTROL PANEL

FOR USE WITH COMBINATION FIRE/SMOKE DAMPERS WITH DTO DUAL TEMPERATURE OVERRIDE (MLS-400)
MODEL: DCP2 KEY SWITCH WITH LIGHTS

The DCP2 is a key switch operated control panel with position indicator lights for use with Nailor Combination Fire/Smoke Dampers equipped with the DTO Dual Temperature Override Option (formerly MLS-400). The DCP2 provides the ability to open or close the damper in a dynamic smoke management system or to test the damper. Indicator lights on the DCP2 panel provide visual confirmation of the damper position.

The key switch is a 3 position control switch with the following options:
NORMAL: Damper remains open until closed by the primary heat sensor or smoke detector signal.
CLOSED: Damper closes and remains closed regardless of any sensor signal.
REOPEN: The damper opens and remains open (override position) until the secondary hi-limit sensor signals the damper to close and lock.

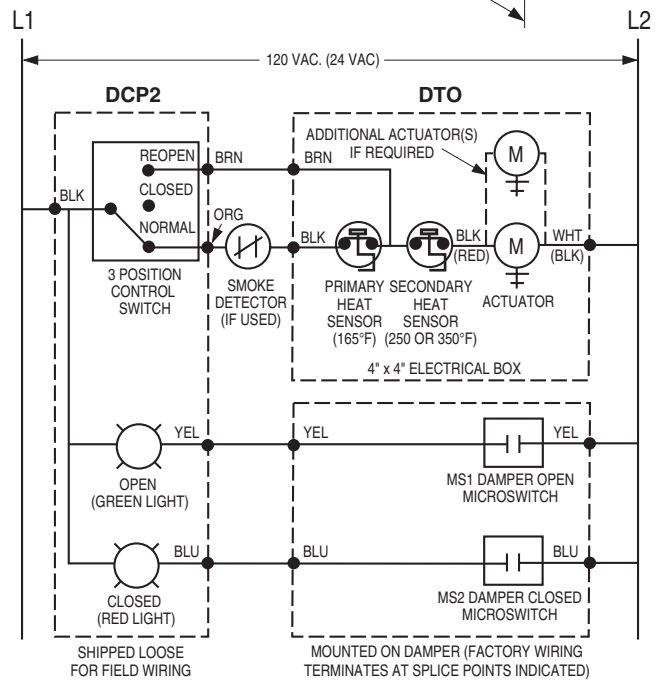
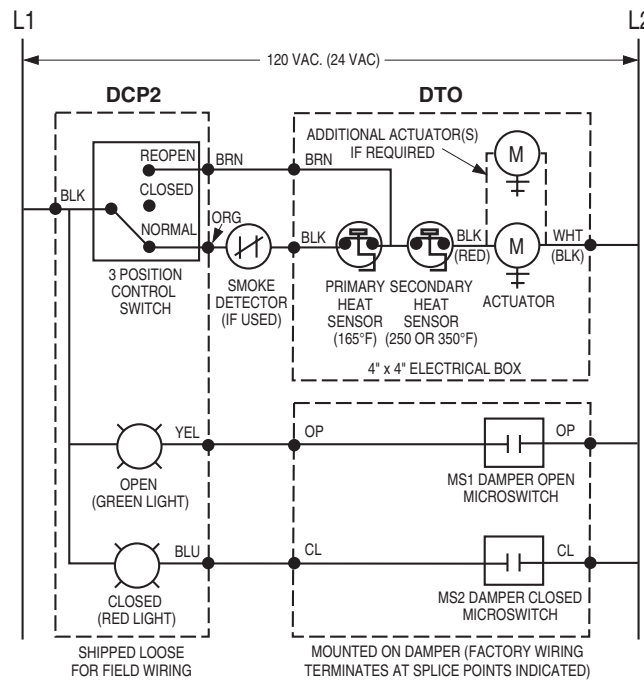
The DCP2 is shipped loose for field mounting and wiring either near the damper or in a remote location.



VOLTAGE:

- 120 120 VAC
- 24 24 VAC/DC
- 230 230 VAC

WIRING DIAGRAMS:



DCP2/DTO with Belimo built-in (auxiliary switches) position indicator package

Belimo Actuator Aux. Switch Wiring Connections

Model Series	Open (OP)	Closed (CL)
FSTF	Orange / Gray	Violet / Red
FSLF / FSAF	Gray / Gray	Violet / Violet
FSNF / FSAFB	White S4 / S6	White S1 / S2

DCP2/DTO with Nailor or Honeywell built-in (actuator auxiliary switches) position indicator package

SCHEDULE TYPE:

PROJECT:

ENGINEER:

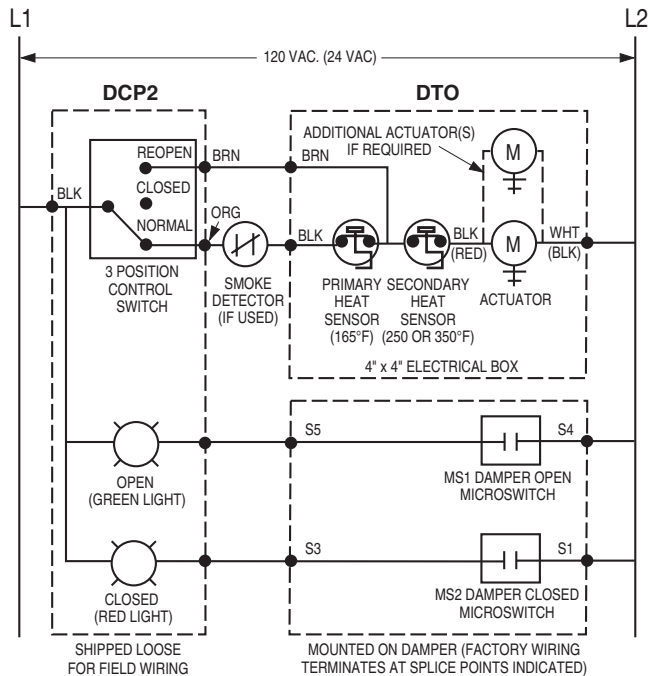
CONTRACTOR:

Page 1 of 2
 Dimensions are in inches (mm).

DATE	B SERIES	SUPERSEDES	DRAWING NO.
9 - 3 - 20	FD-ACC	8 - 8 - 17	DCP2

DAMPER CONTROL PANEL

FOR USE WITH COMBINATION FIRE/SMOKE DAMPERS
 WITH DTO DUAL TEMPERATURE OVERRIDE (MLS-400)
MODEL: DCP2 KEY SWITCH WITH LIGHTS

WIRING DIAGRAMS:


DCP2/DTO with Siemens GJD Series built-in (actuator auxiliary switches) position indicator package

SCHEDULE TYPE:				
PROJECT:				
ENGINEER:	DATE	B SERIES	SUPERSEDES	DRAWING NO.
CONTRACTOR:	9 - 3 - 20	FD-ACC	8 - 8 - 17	DCP2