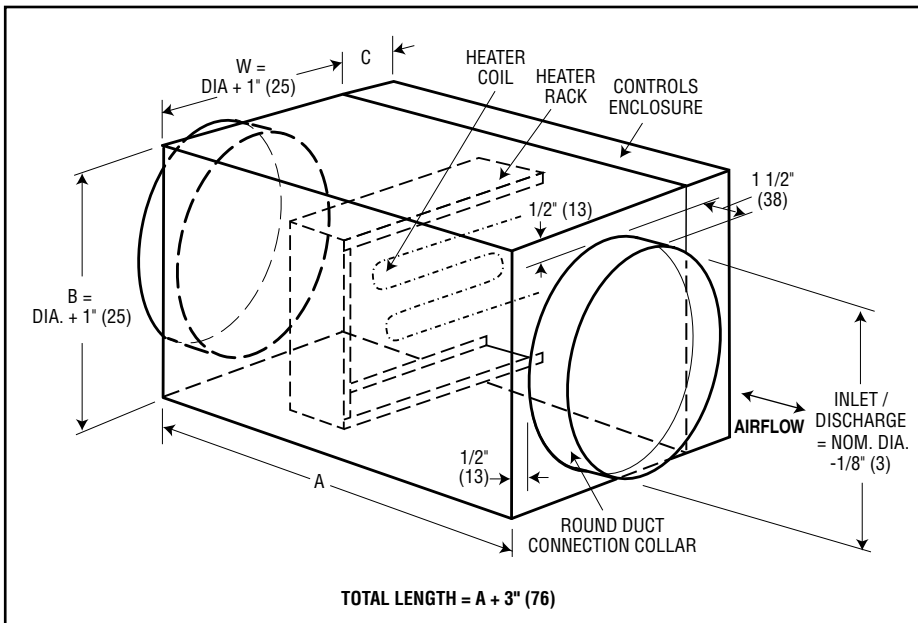




ELECTRIC DUCT HEATERS ROUND DUCT CONNECTIONS CONSTRUCTION AND DIMENSIONAL DATA MODEL: DHRR

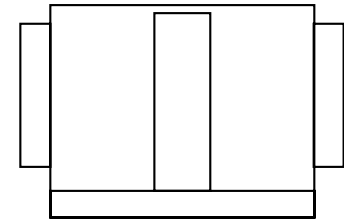


Standard Construction:

- 1" (25) dual density insulation exposed edges coated to prevent air erosion. Meets the requirements of NFPA 90A and UL 181.
- 20 ga. (1.00) zinc coated steel casing.
- High quality 80/20 nickel-chrome alloy heating element.
- High performance ceramic insulators.

Nom. Duct Diameter	
Min.	Max.
6" (152)	24" (610)

NOTE: Inlet and Discharge collars are equal in diameter.



Centered Panel, Top View

Dimensions A, B and C vary dependent upon controls. **If there is a critical dimension that the control panel may not exceed due to clearance restrictions, please note this information on the order, otherwise the computer designed AIRFLOW panel will be supplied.**

SELECT:

	Voltage/Phase
1201	120V/1 ph.
2081	208V/1 ph.
2401	240V/1 ph.
2771	277V/1 ph.
3471	347V/1 ph.
4801	480V/1 ph.
2083	208V/3 ph.
2403	240V/3 ph.
4803	480V/3 ph.
6003	600V/3 ph.

No. Stages			
1ST	1 Stage	9ST	9 Stages
2ST	2 Stages	10ST	10 Stages
3ST	3 Stages	11ST	11 Stages
4ST	4 Stages	12ST	12 Stages
5ST	5 Stages	13ST	13 Stages
6ST	6 Stages	14ST	14 Stages
7ST	7 Stages	15ST	15 Stages
8ST	8 Stages	16ST	16 Stages

Air Proving Means	
A1	Airflow Switch (default)
A224	Fan Interlock Relay 24V
A212	Fan Interlock Relay 120V
A220	Fan Interlock Relay 208V
A240	Fan Interlock Relay 240V
A277	Fan Interlock Relay 277V
A3	Fan Control Relay
A4	Fan Connection Terminal Block
A524	A/F Switch + Fan I.L. Relay 24V
A512	A/F Switch + Fan I.L. Relay 120V
A520	A/F Switch + Fan I.L. Relay 208V
A540	A/F Switch + Fan I.L. Relay 240V
A577	A/F Switch + Fan I.L. Relay 277V

Control Voltage	
24V	24 Volts (default)
120V	120 Volts
N/A	Not applicable

PE Switch	
P1N0	Load carrying Norm. Open (default)
P1NC	Load carrying Norm. Closed
P2N0	Pilot duty Norm. Open (default)
P2NC	Pilot duty Norm. Closed

Control Contactors	
C2	Magnetic Disconnecting
C4	Quiet Disconnecting
C6	Mercury Disconnecting
N/A	Not applicable

Safety Contactors	
SC2	Magnetic Disconnecting (default on SSR/SCR)

Transformer	
T1	Class II, 1-3 stages (default)
T2	Class II, 4 stages +
T3	Class II, Resettable
T4	Primary Fused, 1-3 stages
T5	Primary Fused, 4 stages +
00	None

Fusing	
F1	Min. per NEC/UL(48A+) (default)
F2	One fuse block per heater
F3	One fuse block per stage

Disconnect Switch	
D1	Door Interlocking (default)
D2	Toggle Type
00	None

Options & Accessories:

Step Controller	
JA4	1 - 4 Stage
JA8	5 - 8 Stage
JA12	9 - 12 Stage
JA16	13 - 16 Stage

Vernier Controller	
JB4	1 - 4 Stage
JB8	5 - 8 Stage
JB12	9 - 12 Stage
JB16	13 - 16 Stage

Derated Coils	
G45	45 Watts/sq. in.
G35	35 Watts/sq. in.
G25	25 Watts/sq. in.

Remote Control Panel	
DRP	Remote Control Panel
G2	S/S element connections
G3	Insulated panel
G5	Dust tight (Chicago code)
PET	P. E. Transducer

Pilot Lights	
P1	Heater (control circuit) on
P2	Each stage on
P3	Airflow switch open

Thermostat Option:

SCHEDULE TYPE:

PROJECT:

ENGINEER:

CONTRACTOR:

Dimensions are in inches (mm).

DATE	B SERIES	SUPERSEDES	DRAWING NO.
9 - 1 - 21	DH	1 - 9 - 19	DHRR