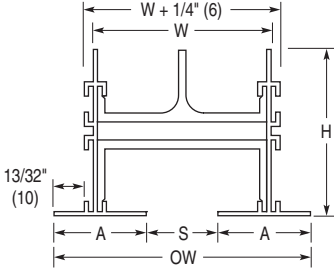




**FLOWLINE™ LINEAR SLOT DIFFUSERS**  
**ARCHITECTURAL • ALUMINUM**  
**RETURN (NO PATTERN CONTROLLERS)**  
**MODEL SERIES: FLR TYPES AA & AAC**

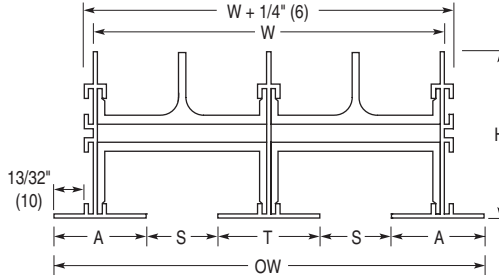
**One Slot**

- Type AA Exposed Flange Frame**
- Drywall (ceiling, wall), T-Bar



**Two Slot**

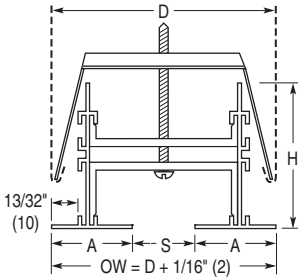
- Type AA Exposed Flange Frame**
- Drywall (ceiling, wall), T-Bar



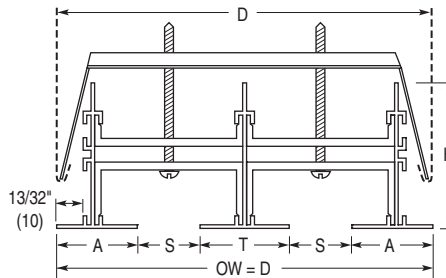
**Dimensional Data - Imperial (Metric) Units**

Model	S Slot Width	1 Slot		2 Slot		A Border Width	H Height	T 2 Slot
		W	OW	W	OW			
FLR10	1 (25)	2 1/2 (64)	3 9/16 (90)	4 15/16 (125)	6 (152)	1 9/32 (33)	2 3/8 (60)	1 7/16 (37)
FLR15	1 1/2 (38)	3 1/2 (89)	4 9/16 (116)	6 15/16 (176)	8 (203)	1 17/32 (39)	2 5/8 (67)	1 15/16 (49)
FLR20	2 (51)	4 1/2 (114)	5 9/16 (141)	8 15/16 (227)	10 (254)	1 25/32 (45)	2 7/8 (73)	2 7/16 (62)
FLR25	2 1/2 (64)	5 1/2 (140)	6 9/16 (167)	10 15/16 (278)	12 (305)	2 1/32 (52)	3 1/8 (79)	2 15/16 (75)
FLR30	3 (76)	6 1/2 (165)	7 9/16 (192)	12 15/16 (329)	14 (356)	2 9/32 (58)	3 3/8 (86)	3 7/16 (87)

- Type AAC Exposed Flange Frame**
- Drywall (ceiling)



- Type AAC Exposed Flange Frame**
- Drywall (ceiling)



**Dimensional Data - Imperial (Metric) Units**

Model	S Slot Width	D Duct Width		Ceiling Opening Width		A Border Width	H Height	T 2 Slot
		1 Slot	2 Slot	1 Slot	2 Slot			
FLR10	1 (25)	3 1/2 (89)	6 (152)	3 (76)	5 1/2 (140)	1 9/32 (33)	2 3/8 (60)	1 7/16 (37)
FLR15	1 1/2 (38)	4 1/2 (114)	8 (203)	4 (102)	7 1/2 (191)	1 17/32 (39)	2 5/8 (67)	1 15/16 (49)
FLR20	2 (51)	5 1/2 (140)	10 (254)	5 (127)	9 1/2 (241)	1 25/32 (45)	2 7/8 (73)	2 7/16 (62)
FLR25	2 1/2 (64)	6 1/2 (165)	12 (305)	6 (152)	11 1/2 (292)	2 1/32 (52)	3 1/8 (79)	2 15/16 (75)
FLR30	3 (76)	7 1/2 (191)	14 (356)	7 (178)	13 1/2 (343)	2 9/32 (58)	3 3/8 (86)	3 7/16 (87)

**Notes:**

- Material: Heavy duty extruded aluminum frame and spacers.
- Maximum section length is 72" (1823) by default. 96" (2438) and 120" (3048) are available as options. Lengths longer than the maximum section length are furnished in multiple sections with alignment strips, the number and size determined by the factory.
- AW Appliance White finish with black interior surfaces is standard on frame/borders AA and AAC. Optional finishes are available.
- Frame/Border Type AA is supplied w/integral hanger brackets on 24" (610) centers. Frame/Border Type AAC is supplied with concealed mounting brackets and levelling screws on 24" (610) centers. See separate submittal for optional mounting hardware and accessories.

**Option:**

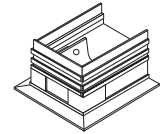
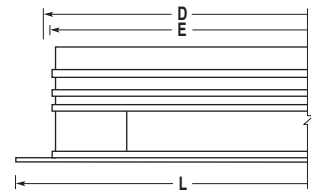
- SP Special Finish \_\_\_\_\_.

**Overall Length & End Cap Position**

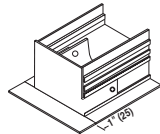
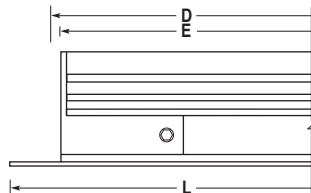
	E	L
<input type="checkbox"/> MM	D - 1/4 (6)	D + 9/16 (14)
<input type="checkbox"/> MO	D - 1/8 (3)	D + 9/32 (7)
<input type="checkbox"/> MC	D - 1/16 (2)	D + 11/32 (9)
<input type="checkbox"/> OO	D	D
<input type="checkbox"/> OC	D - 1/16 (2)	D - 1/16 (2)
<input type="checkbox"/> CC	D - 1/8 (3)	D - 1/8 (3)
<input type="checkbox"/> FF	D - 1/4 (6)	D + 1 5/8 (41)
<input type="checkbox"/> FO	D - 1/8 (3)	D + 13/16 (21)
<input type="checkbox"/> FC	D - 1/16 (2)	D + 7/8 (22)

**End Condition**

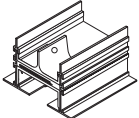
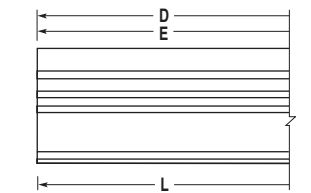
- M Mitered End Border**



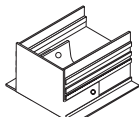
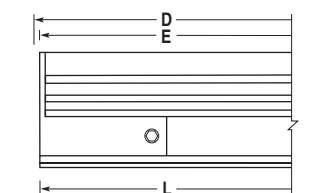
- F Flanged End Cap**  
Type AA Border Only



- O Open End**



- C Flat End Cap**



Dimensions are in inches (mm).

**SCHEDULE TYPE**

**PROJECT**

**ENGINEER**

**CONTRACTOR**

**DATE**

**B SERIES**

**SUPERSEDES**

**DRAWING NO.**

3 - 3 - 22

FL

2 - 25 - 21

FLR-1