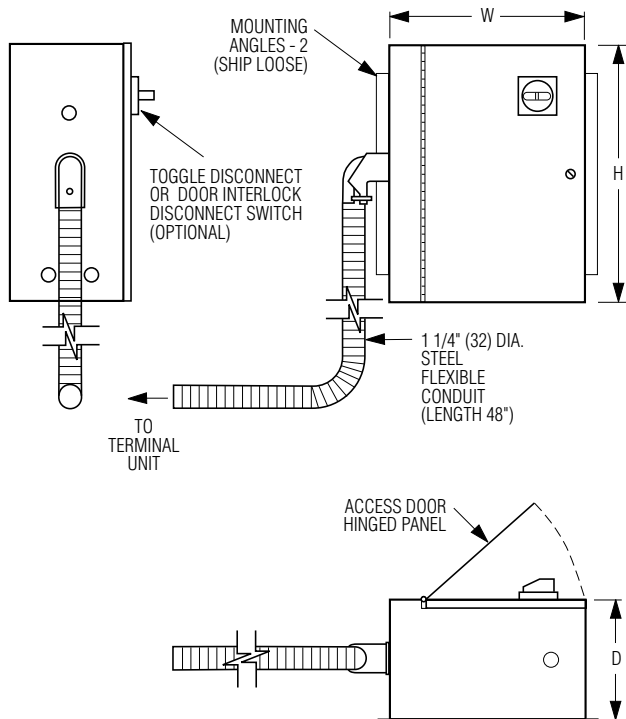
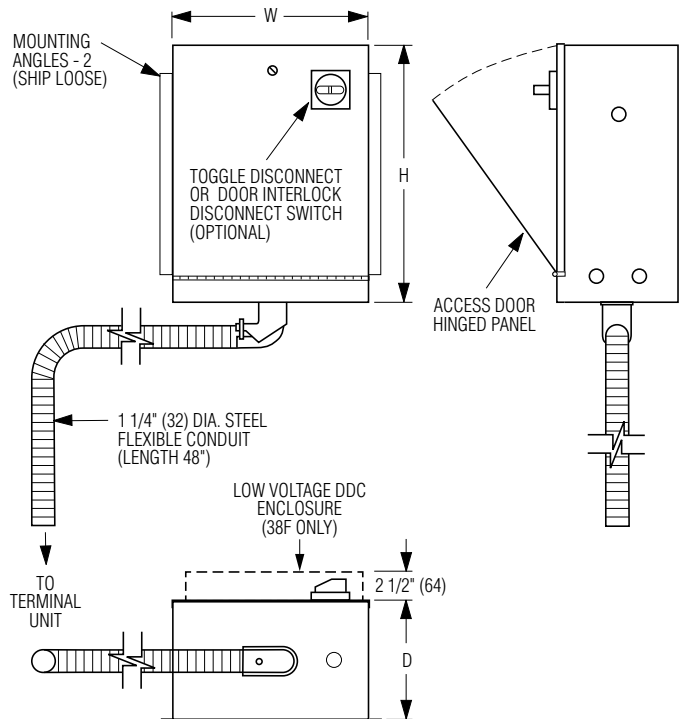




FN3 REMOTE LINE VOLTAGE CONTROLS ENCLOSURE
FAN POWERED TERMINAL UNIT OPTION
MODEL SERIES: 33SZ, 35S(ST), 37S(ST), 38F AND 38S



33SZ / 35S(ST) / 37S(ST) DESIGN
(Ceiling Mounted Terminal Unit)



38F / 38S DESIGN
(Underfloor Terminal Unit)

Dimensional Data

Model Series	Unit Size	W	H	D
33SZ	10	15 (381)	8 1/2 (216)	6 3/4 (171)
	30, 35	15 (406)	11 (279)	6 3/4 (171)
	40, 50, 55	17 (432)	14 (356)	5 3/4 (146)
35S(ST)	1, 2	14 (356)	13 (330)	5 3/4 (146)
	3, 4, 5, 6, 7	14 (356)	17 (432)	5 3/4 (146)
37S(ST)	1, 2, 3, 4	15 (381)	11 (279)	6 3/4 (171)
38F	1, 3, 5, 6, 33, 3S, 3H, 6H, 33H	15 (381)	11 (279)	6 3/4 (171)
38S	1, 3, 5	15 (381)	11 (279)	6 3/4 (171)



NOTES:

- The FN3 line voltage enclosure is an ETL listed option. The FN3 was developed for Nailor fan powered terminal units in order to help meet NEC clearance requirements. Standard enclosures are mounted on the side of the unit and effectively add 42" (1067) to the terminals width footprint. Very often there is insufficient clearance in the ceiling plenum due to physical obstructions to accommodate this. The FN3 provides flexibility in that it may be field positioned in any orientation that provides the NEC clearance requirement.
- The FN3 Line voltage enclosure ships loose with a 48" (1219) flexible conduit connection to the terminal unit. The enclosure should be field mounted either on or remote from the terminal unit in a position that meets (NEC) clearance requirements.
 The controls enclosure is supplied with mounting angles, which ship loose for field attachment.

SCHEDULE TYPE:		Dimensions are in inches (mm)			
PROJECT:					
ENGINEER:	DATE	B SERIES	SUPERSEDES	DRAWING NO.	
CONTRACTOR:	1 - 12 - 22	FN	8 - 3 - 21	FN3	