



DEPARTMENT OF REGULATORY AND ECONOMIC RESOURCES (RER)
BOARD AND CODE ADMINISTRATION DIVISION

NOTICE OF ACCEPTANCE (NOA)

MIAMI-DADE COUNTY
PRODUCT CONTROL SECTION

11805 SW 26 Street, Room 208
Miami, Florida 33175-2474
T (786) 315-2590 F (786) 315-2599

www.miamidade.gov/building

Nailor Industries Inc.
4714 Winfield Road
Houston, TX 77039

SCOPE: This NOA is being issued under the applicable rules and regulations governing the use of construction materials. The documentation submitted has been reviewed and accepted by Miami-Dade County RER-Product Control Section to be used in Miami Dade County and other areas where allowed by the Authority Having Jurisdiction (AHJ).

This NOA shall not be valid after the expiration date stated below. The Miami-Dade County Product Control Section (In Miami Dade County) and/or the AHJ (in areas other than Miami Dade County) reserve the right to have this product or material tested for quality assurance purposes. If this product or material fails to perform in the accepted manner, the manufacturer will incur the expense of such testing and the AHJ may immediately revoke, modify, or suspend the use of such product or material within their jurisdiction. RER reserves the right to revoke this acceptance if it is determined by Miami-Dade County Product Control Section that this product or material fails to meet the requirements of the applicable building code.

This product is approved as described herein and has been designed to comply with the Florida Building Code, including the High Velocity Hurricane Zone.

DESCRIPTION: Model 1675WDVM Aluminum Louver – L.M.I.

APPROVAL DOCUMENT: Drawing No. **1675WDVM**, titled "1675WDVM Louver", sheets 1 through 12 of 12, prepared by manufacturer, dated 09/25/2017, with revision C dated 05/10/2024, signed and sealed by Wayne K. Helmila, P.E., bearing the Miami-Dade County Product Control Revision stamp with the Notice of Acceptance number and expiration date by the Miami-Dade County Product Control Section.

MISSILE IMPACT RATING: Large and Small Missile Impact Resistant

LABELING: Each unit shall bear a permanent label with the manufacturer's name or logo, Houston, TX, model/series, and following statement: "Miami-Dade County Product Control Approved", unless otherwise noted herein.

LIMITATION: This system is to be installed in a location where the room behind the louver is designed to drain water penetrating into the room, and the room will house water resistant/waterproof equipment, components, or supplies.

RENEWAL of this NOA shall be considered after a renewal application has been filed and there has been no change in the applicable building code negatively affecting the performance of this product.

TERMINATION of this NOA will occur after the expiration date or if there has been a revision or change in the materials, use, and/or manufacture of the product or process. Misuse of this NOA as an endorsement of any product, for sales, advertising or any other purposes shall automatically terminate this NOA. Failure to comply with any section of this NOA shall be cause for termination and removal of NOA.

ADVERTISEMENT: The NOA number preceded by the words Miami-Dade County, Florida, and followed by the expiration date may be displayed in advertising literature. If any portion of the NOA is displayed, then it shall be done in its entirety.

INSPECTION: A copy of this entire NOA shall be provided to the user by the manufacturer or its distributors and shall be available for inspection at the job site at the request of the Building Official. This NOA **revises NOA No. 23-0724.22** and consists of this page 1 and evidence pages E-1 and E-2, as well as approval document mentioned above.

The submitted documentation was reviewed by **Carlos M. Utrera, P.E.**



07/08/24

NOA No. 24-0516.03
Expiration Date: August 30, 2028
Approval Date: July 18, 2024
Page 1

NOTICE OF ACCEPTANCE: EVIDENCE SUBMITTED

1. EVIDENCE SUBMITTED UNDER PREVIOUS NOA # 18-0117.11

A. DRAWINGS

1. Drawing No. **1675WDVM**, titled “1675WDVM Louver”, sheets 1 through 11 of 11, dated 09/25/17, prepared by the manufacturer, signed and sealed by Wayne K. Helmila, P.E.

B. TESTS “Submitted under NOA No. 18-0117.11”

1. Test reports on: 1) Uniform Static Air Pressure Test, Loading per FBC, TAS 202-94
2) Large Missile Impact Test per FBC, TAS 201-94
3) Cyclic Wind Pressure Loading per FBC, TAS 203-94
along with installation diagram of Model 1675 WDVM Louver System, prepared by Intertek, Test Report No. **H4890.01-801-18-R3**, dated 09/27/17 and revised on 05/18/18, signed and sealed by Tyler Westerling, P.E.
2. Test Report on Wind Driven Rain Resistance per TAS 100(A)-95 on a Model 1675WDVM Vertical Aluminum Louver, prepared by Intertek, Test Report No. **H0051.02-801-18 R1**, dated 09/28/17, revised on 11/21/17, signed and sealed by Tyler Westerling, P.E.
3. Test Report on High Velocity Wind Driven Rain Resistance per AMCA 550-15 on a Model 1675WDVM Vertical Aluminum Louver, prepared by Intertek/ATI, Test Report No. **H0051.01-801-18-R3**, dated 04/20/2017, revised on 11/21/2017, signed and sealed by Tyler Westerling, P.E.

C. CALCULATIONS

1. Louver structural calculations dated 10/26/17, prepared by Rice Engineering, signed and sealed by Wayne K. Helmila, P.E.

D. QUALITY ASSURANCE

1. Miami-Dade Department of Regulatory and Economic Resources (RER)

E. MATERIAL CERTIFICATIONS

1. None.

F. STATEMENTS

1. Statement letter of code conformance to the **FBC 6th Edition (2017)** issued by Rice Engineering, dated 04/16/18, signed and sealed by Wayne K. Helmila, P.E.
2. Statement letter of no financial interest issued by Rice Engineering, dated 04/16/18, signed and sealed by Wayne K. Helmila, P.E.



Carlos M. Utrera, P.E.
Product Control Examiner
NOA No. 24-0516.03
Expiration Date: August 30, 2028
Approval Date: July 18, 2024

NOTICE OF ACCEPTANCE: EVIDENCE SUBMITTED

2. EVIDENCE SUBMITTED UNDER NOA # 21-0630.09 AND NEW

A. DRAWINGS

1. Drawing No. **1675WDVM**, titled “1675WDVM Louver”, sheets 1 through 12 of 12, prepared by manufacturer, dated 09/25/2017, with revision C dated 05/10/2024, signed and sealed by Wayne K. Helmila, P.E.

B. TESTS

1. None.

C. CALCULATIONS

1. Louver calculations, prepared by Rice Engineering, dated 05/10/2024, signed and sealed by Wayne K. Helmila, P.E.

D. QUALITY ASSURANCE

1. Miami-Dade Department of Regulatory and Economic Resources (RER).

E. MATERIAL CERTIFICATIONS

1. None.

F. STATEMENTS


1. Statement letter of code conformance to the 8th edition (2023) of the FBC, issued by Rice Engineering, dated 05/10/2024, signed and sealed by Wayne K. Helmila, P.E.

“Submitted under NOA # 21-0630.09”

2. Statement letter of code conformance to the **7th edition (2020) FBC**, issued by Rice Engineering, dated 08/16/21, signed and sealed by Wayne K. Helmila, P.E.

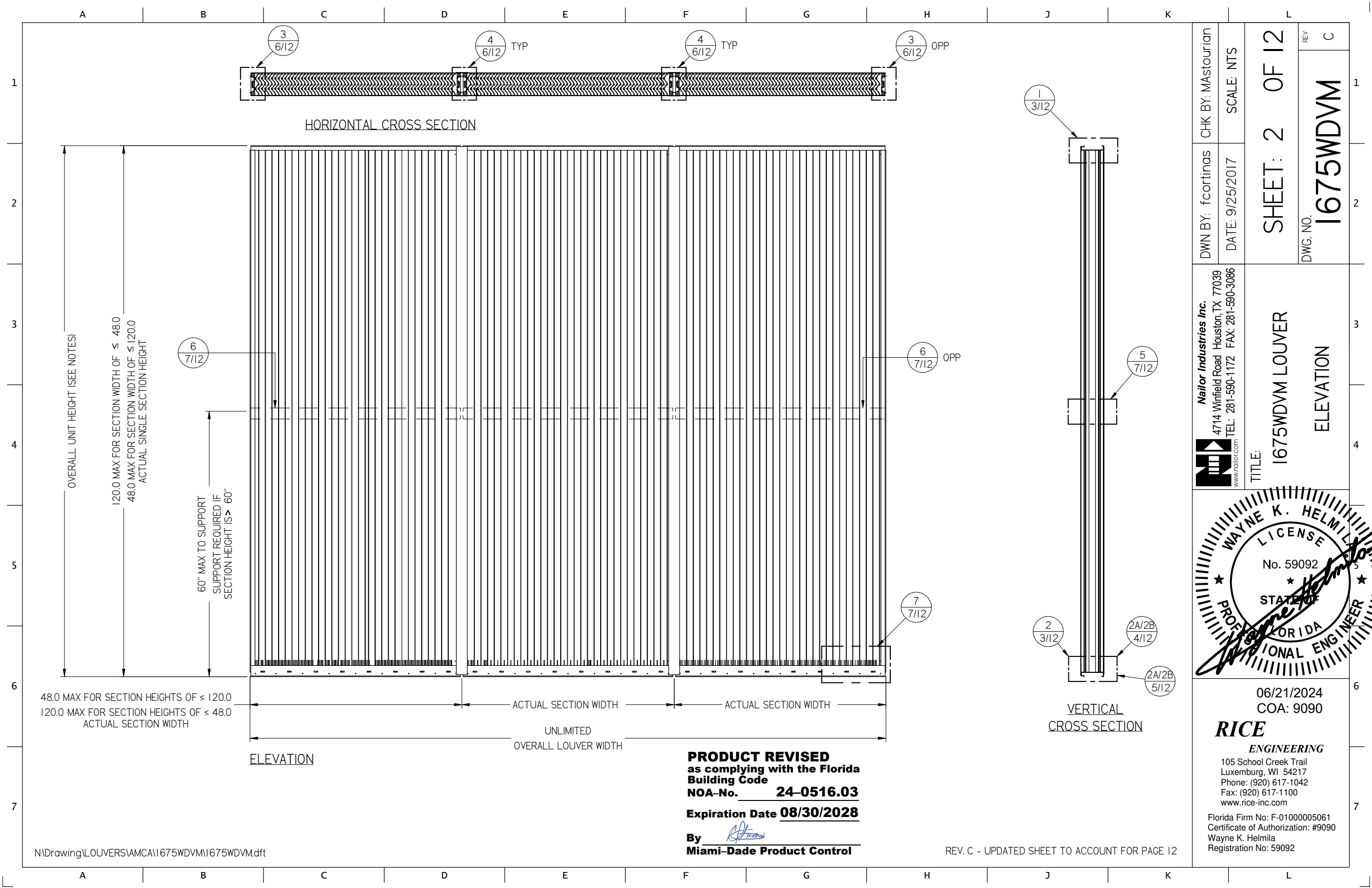


Carlos M. Utrera, P.E.
Product Control Examiner
NOA No. 24-0516.03
Expiration Date: August 30, 2028
Approval Date: July 18, 2024


	A	B	C	D	E	F	G	H	J	K	L	I		
1	<div>DRAWING INDEX</div> <div>1. INDEX TO DRAWINGS AND NOTES</div> <div>2. I675WDVM LOUVER - ELAVATION</div> <div>3. I675WDVM LOUVER- HEAD AND SILL DETAIL</div> <div>4. I675WDVM LOUVER- SKINNY WALL APPLICATION HEAD AND SILL DETAIL.</div> <div>5. I675WDVM LOUVER- SKINNY WALL APPLICATION HEAD AND SILL DETAIL CONT.</div> <div>6. I675WDVM LOUVER - JAMB AND MULLION DETAIL</div> <div>7. I675WDVM LOUVER - BLADE STRAP DETAIL</div> <div>8. I675WDVM LOUVER - BAFFLE/ WEEP DETAIL</div> <div>9. I675WDVM LOUVER - SEALANT DETAIL</div> <div>10. I675WDVM LOUVER - PART PROFILES</div> <div>11. I675WDVM LOUVER - BILL OF MATERIAL AND GENERAL NOTES</div> <div>12. I675WDVM LOUVER - FASTENER SCHEDULE</div>										CHK BY: Mastourian	SCALE: NTS	SHEET: 1 OF 12	REV C
2											DWN BY: fcortinas	DATE: 9/25/2017		DWG. NO. I675WDVM
3	<div>TESTS PREFORMED:</div> <div>TAS-100 (A) WIND DRIVEN RAIN RESISTANCE</div> <div>TAS-201 LARGE MISSILE IMPACT</div> <div>TAS-202 UNIFORM STATIC AIR PRESSURE TEST</div> <div>TAS-203 CYCLIC WIND PRESUSRE TEST</div> <div>DESIGN PRESSURE RATING 150 PSF</div>										<div>Nailor Industries Inc.</div> <div>4714 Winfield Road Houston, TX 77039</div> <div>TEL: 281-590-1172 FAX: 281-590-3086</div> <div>www.nailor.com</div>	TITLE: I675WDVM LOUVER INDEX	3	
4													4	
5	<div>NOTES:</div> <div>1. THE I675WDVM HAS BEEN TESTED IN ACCORDANCE WITH THE MIAMI-DADE COUNTY PROTOCOLS: TAS-100 A, TAS-201, TAS-202, & TAS-203 FOR WIND DRIVEN RAIN, LARGE MISSILE IMPACE, UNIFORM PRESSURE, AND CYCLIC WIND PRESSURE.</div> <div>2. THIS LOUVER SYSTEM IS APPROVED FOR APPLICATIONS WITH DESIGN PRESSURES OF +/- 150 PSF OR LESS.</div> <div>3. THIS LOUVER SYSTEM IS NON-BEARING AND IS NOT DESIGNED TO WITHSTAND BUILDING DEAD LOADS.</div> <div>4. LOUVER ANCHORS ARE REVIEWED FOR ATTACHMENT INTO STEEL, CONCRETE, MASONRY, OR TIMBER STRUCTURE. MINIMUM EDGE DISTANCE AND EMBEDMENT REQUIREMENTS ARE SHOWN. NAILOR IND. DOES NOT DETERMINE THE STRUCTURE INTERGRITY OF THE SUBSTRUCTURE.</div> <div>5. MAXIMUM SINGLE SECTION SIZE: 48" WIDE X 120" HIGH OR 120" WIDE X 48" HIGH.</div> <div>6. MAXIMUM ASSEMBLED LOUVER SIZE UNLIMITED WIDE X 120" HIGH MAX. MULLION SPACING IS 48".</div> <div>7. SECTIONS OR ASSEMBLIES MAY BE STACKED VERTICALLY PROVIDED A SUITIBLE STRUCTURE STRUCTURAL SUPPORT IS DESIGNED AND INSTALLED BY OTHERS TO SUPPORT ALL LOADS TRANSFERRED FOR THE LOUVER.</div>										<div>Wayne K. Helmila</div> <div>PROFESSIONAL ENGINEER</div> <div>STATE OF FLORIDA</div> <div>No. 59092</div>	5		
6												6		
7	<div>PRODUCT REVISED</div> <div>as complying with the Florida Building Code</div> <div>NOA-No. 24-0516.03</div> <div>Expiration Date 08/30/2028</div> <div>By </div> <div>Miami-Dade Product Control</div>										<div>06/21/2024</div> <div>COA: 9090</div> <div>RICE ENGINEERING</div> <div>105 School Creek Trail</div> <div>Luxemburg, WI 54217</div> <div>Phone: (920) 617-1042</div> <div>Fax: (920) 617-1100</div> <div>www.rice-inc.com</div> <div>Florida Firm No: F-01000005061</div> <div>Certificate of Authorization: #9090</div> <div>Wayne K. Helmila</div> <div>Registration No: 59092</div>	7		
	A	B	C	D	E	F	G	H	J	K	L			

N:\Drawing\LOUVERS\AMCA\I675WDVM\I675WDVM.dft

REVISIONS:
REV C: ADDED PAGE 5 AND RENUMBERED PAGES 6-12
- ADDED PAGE 5 SKINNY WALL APPLICATION HEAD AND SILL DETAIL CONT.
- UPDATED ALL PAGES.



DWN BY: f.cortinas	CHK BY: Mastourian
DATE: 9/25/2017	SCALE: NTS
SHEET: 2 OF 12	
DWG. NO. 1675WDVM	REV C



Nailor Industries Inc.
4714 Winfield Road Houston, TX 77039
TEL: 281-590-1172 FAX: 281-590-3086
www.nailor.com

TITLE: 1675WDVM LOUVER

ELEVATION




06/21/2024
COA: 9090

RICE
ENGINEERING

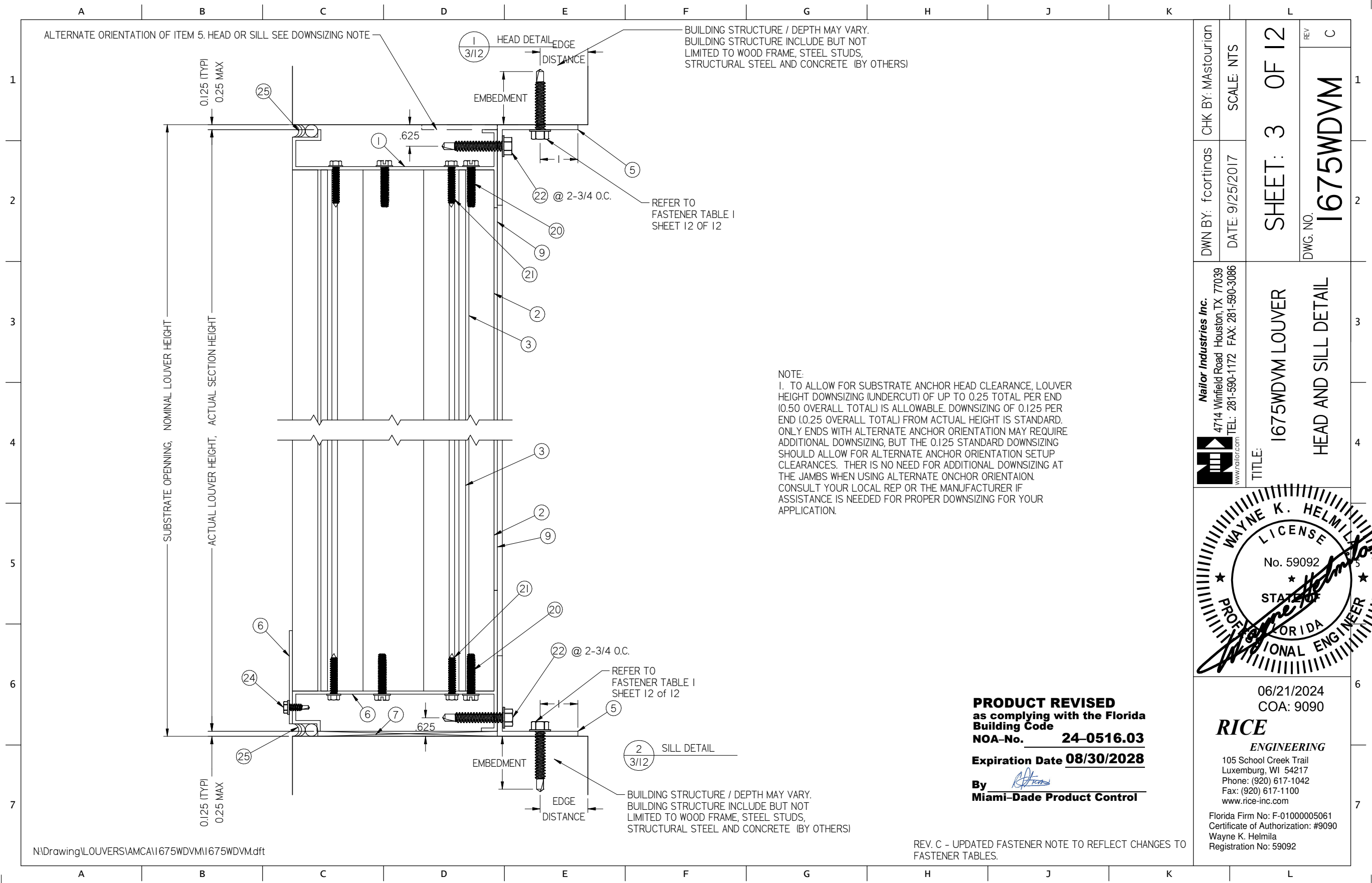
105 School Creek Trail
Luxemburg, WI 54217
Phone: (920) 617-1042
Fax: (920) 617-1100
www.rice-inc.com

Florida Firm No: F-01000005061
Certificate of Authorization: #9090
Wayne K. Helmila
Registration No: 59092


N:\Drawing\LOUVERS\AMCA\1675WDVM\1675WDVM.dft

PRODUCT REVISED
as complying with the Florida
Building Code
NOA-No. **24-0516.03**
Expiration Date **08/30/2028**
By 
Miami-Dade Product Control

REV. C - UPDATED SHEET TO ACCOUNT FOR PAGE 12



DWN BY: f.cortinas	CHK BY: Mastourian
DATE: 9/25/2017	SCALE: NTS
SHEET: 3 OF 12	
DWG. NO. 1675WDVM	REV C



Nailor Industries Inc.
4714 Winfield Road Houston, TX 77039
TEL: 281-590-1172 FAX: 281-590-3086
www.nailor.com

TITLE:

1675WDVM LOUVER

HEAD AND SILL DETAIL

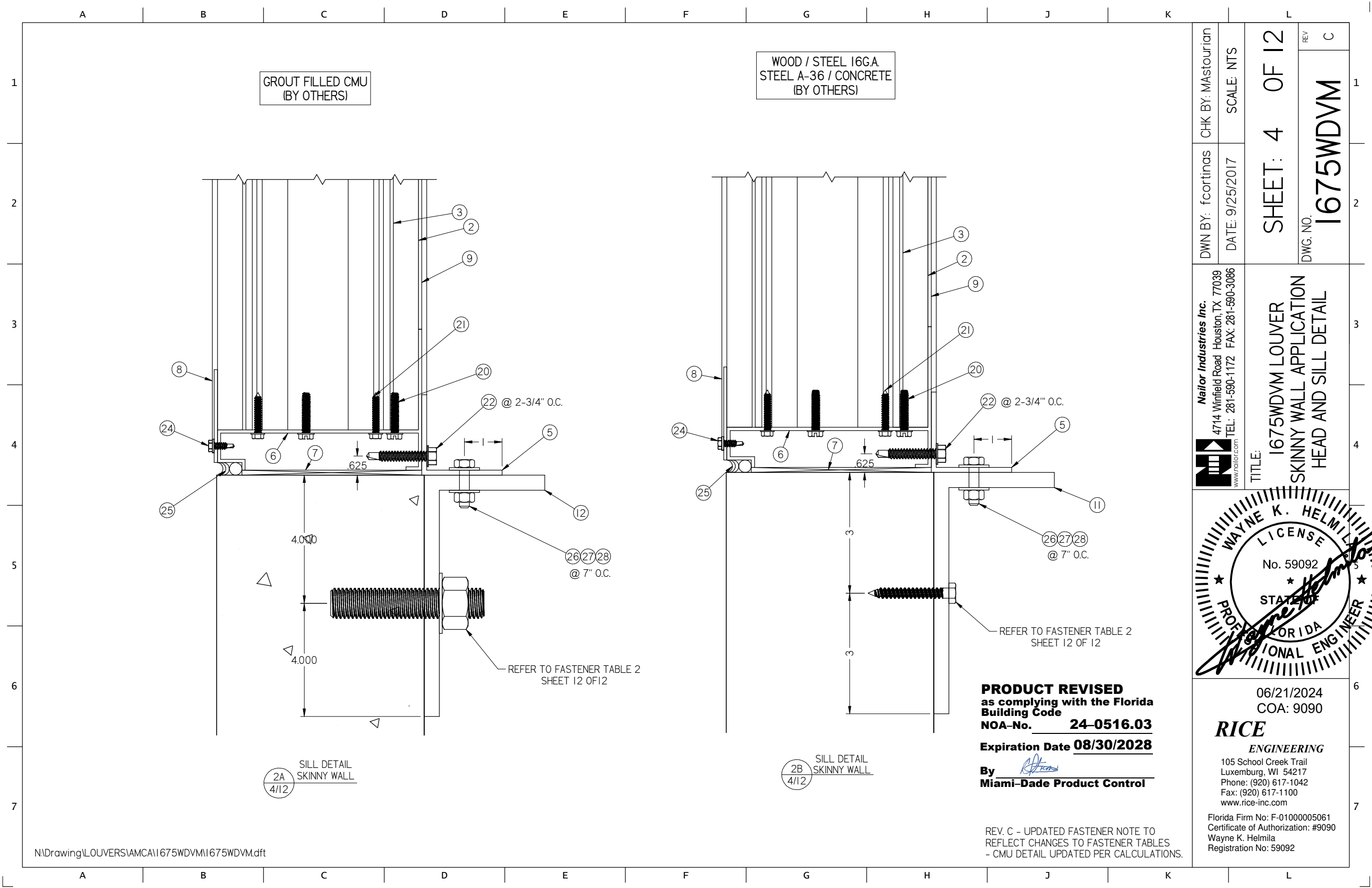


06/21/2024
COA: 9090

RICE
ENGINEERING

105 School Creek Trail
Luxemburg, WI 54217
Phone: (920) 617-1042
Fax: (920) 617-1100
www.rice-inc.com

Florida Firm No: F-01000005061
Certificate of Authorization: #9090
Wayne K. Helmila
Registration No: 59092



DWN BY: fcortinas	CHK BY: Mastourian
DATE: 9/25/2017	SCALE: NTS
SHEET: 4 OF 12	
DWG. NO. 1675WDVM	REV C



Nailor Industries Inc.
4714 Winfield Road Houston, TX 77039
TEL: 281-590-1172 FAX: 281-590-3086
www.nailor.com

TITLE:
1675WDVM LOUVER
SKINNY WALL APPLICATION
HEAD AND SILL DETAIL




06/21/2024
COA: 9090

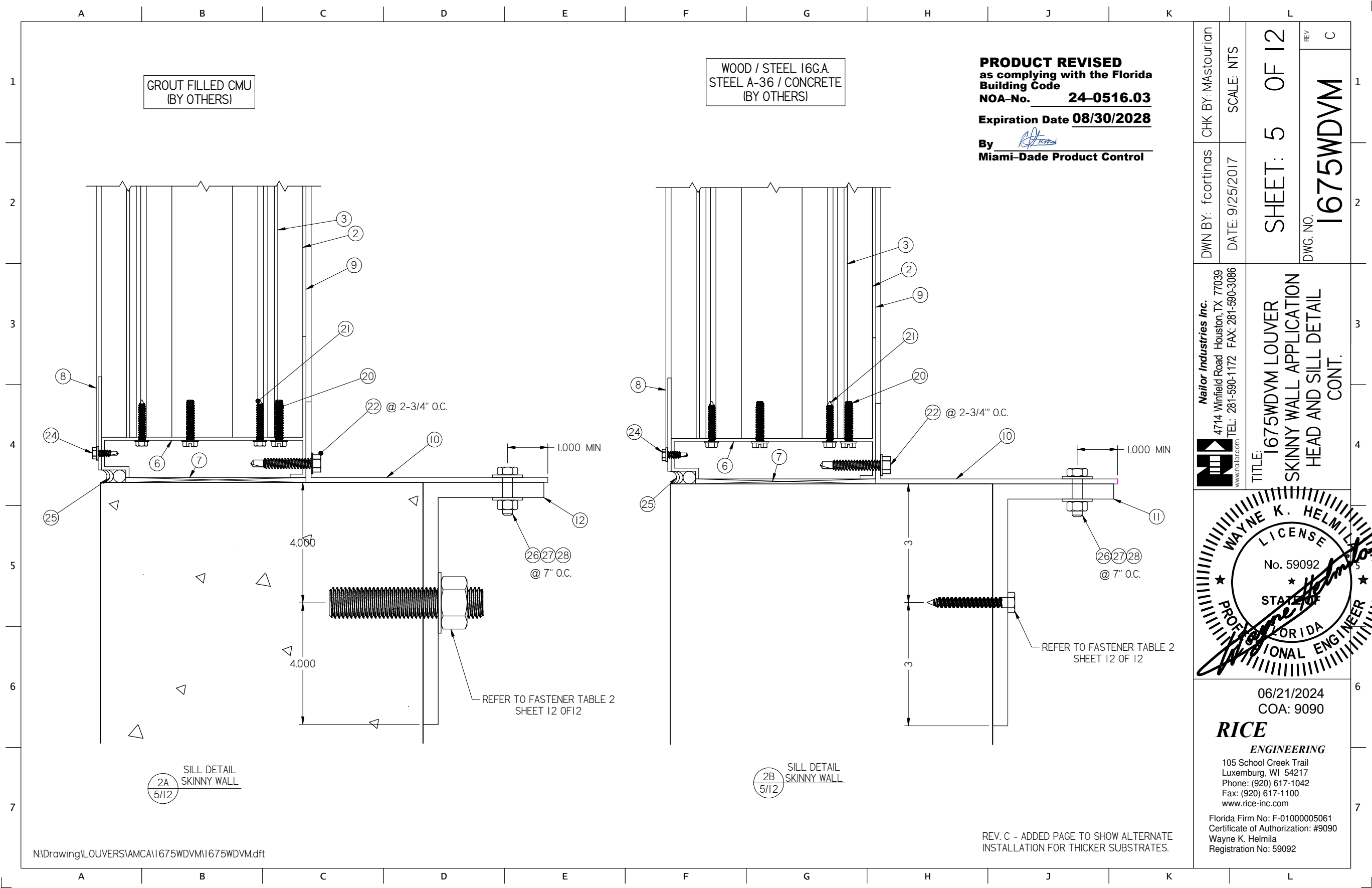
RICE
ENGINEERING

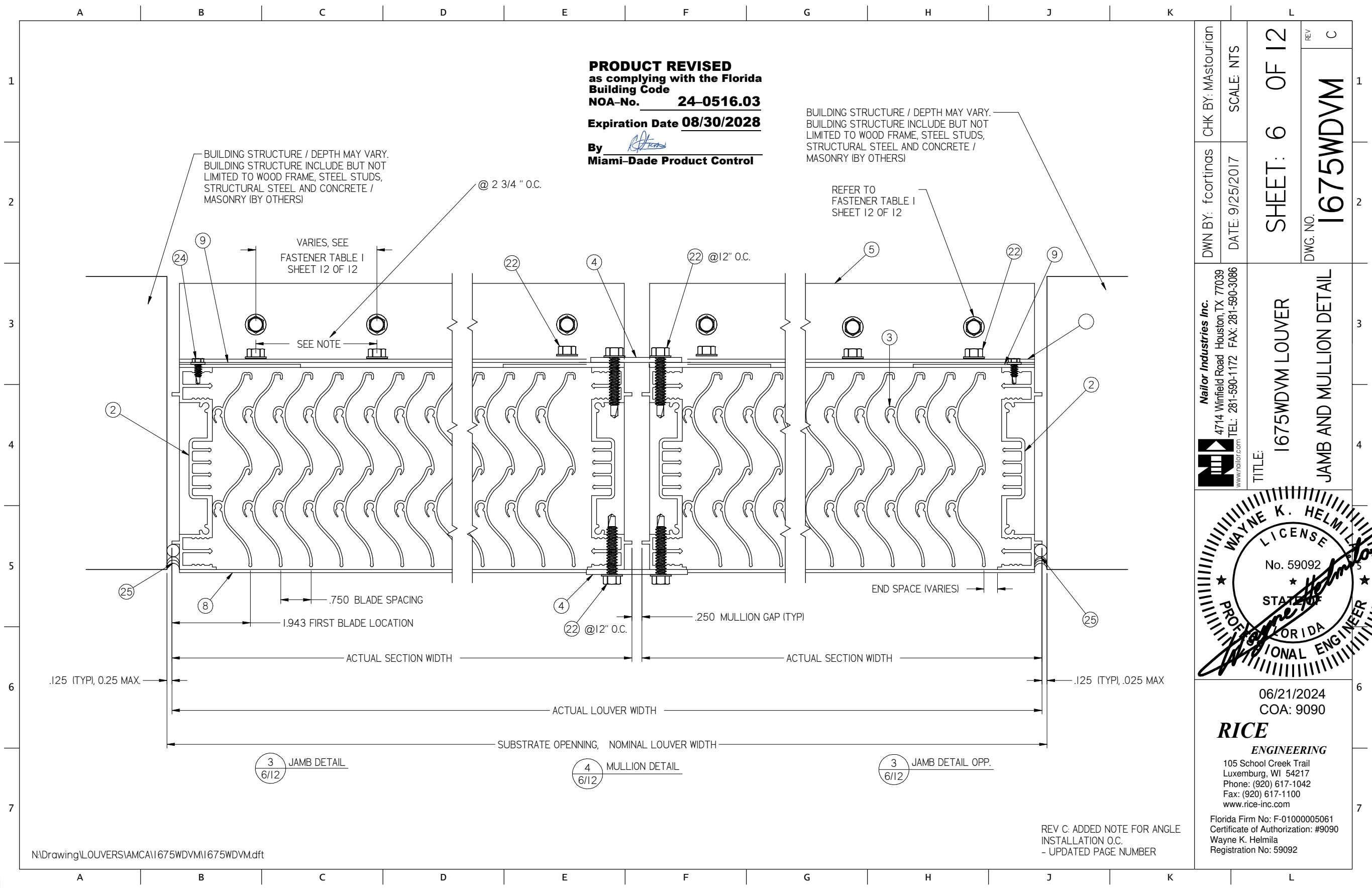
105 School Creek Trail
Luxemburg, WI 54217
Phone: (920) 617-1042
Fax: (920) 617-1100
www.rice-inc.com

Florida Firm No: F-01000005061
Certificate of Authorization: #9090
Wayne K. Helmila
Registration No: 59092

PRODUCT REVISED
as complying with the Florida
Building Code
NOA-No. **24-0516.03**
Expiration Date **08/30/2028**
By 
Miami-Dade Product Control

REV. C - UPDATED FASTENER NOTE TO
REFLECT CHANGES TO FASTENER TABLES
- CMU DETAIL UPDATED PER CALCULATIONS.





DWN BY: f.cortinas	CHK BY: Mastourian
DATE: 9/25/2017	SCALE: NTS
SHEET: 6 OF 12	
DWG. NO. 1675WDVM	REV C



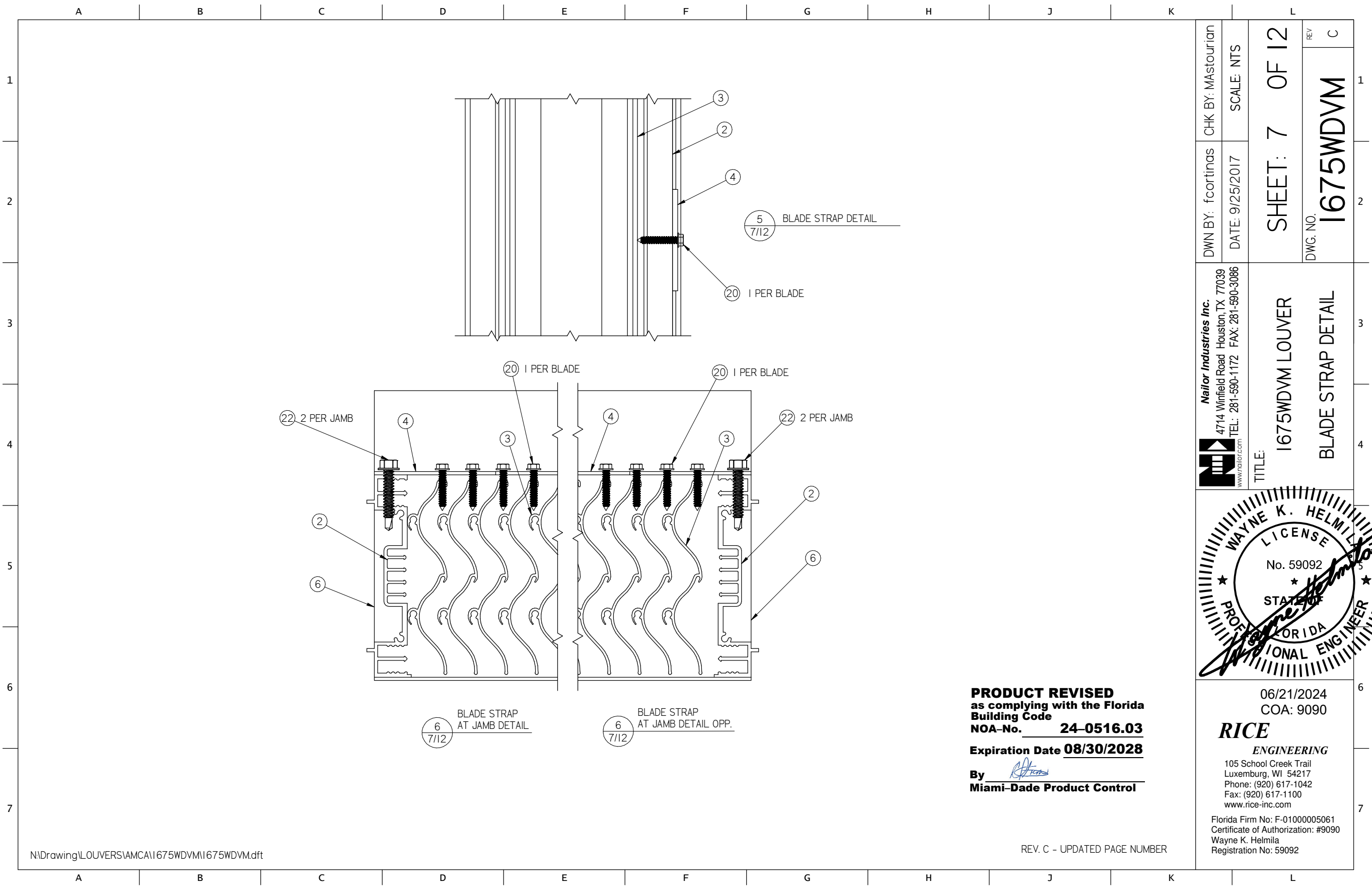
Nailor Industries Inc.
4714 Winfield Road Houston, TX 77039
TEL: 281-590-1172 FAX: 281-590-3086
www.nailor.com

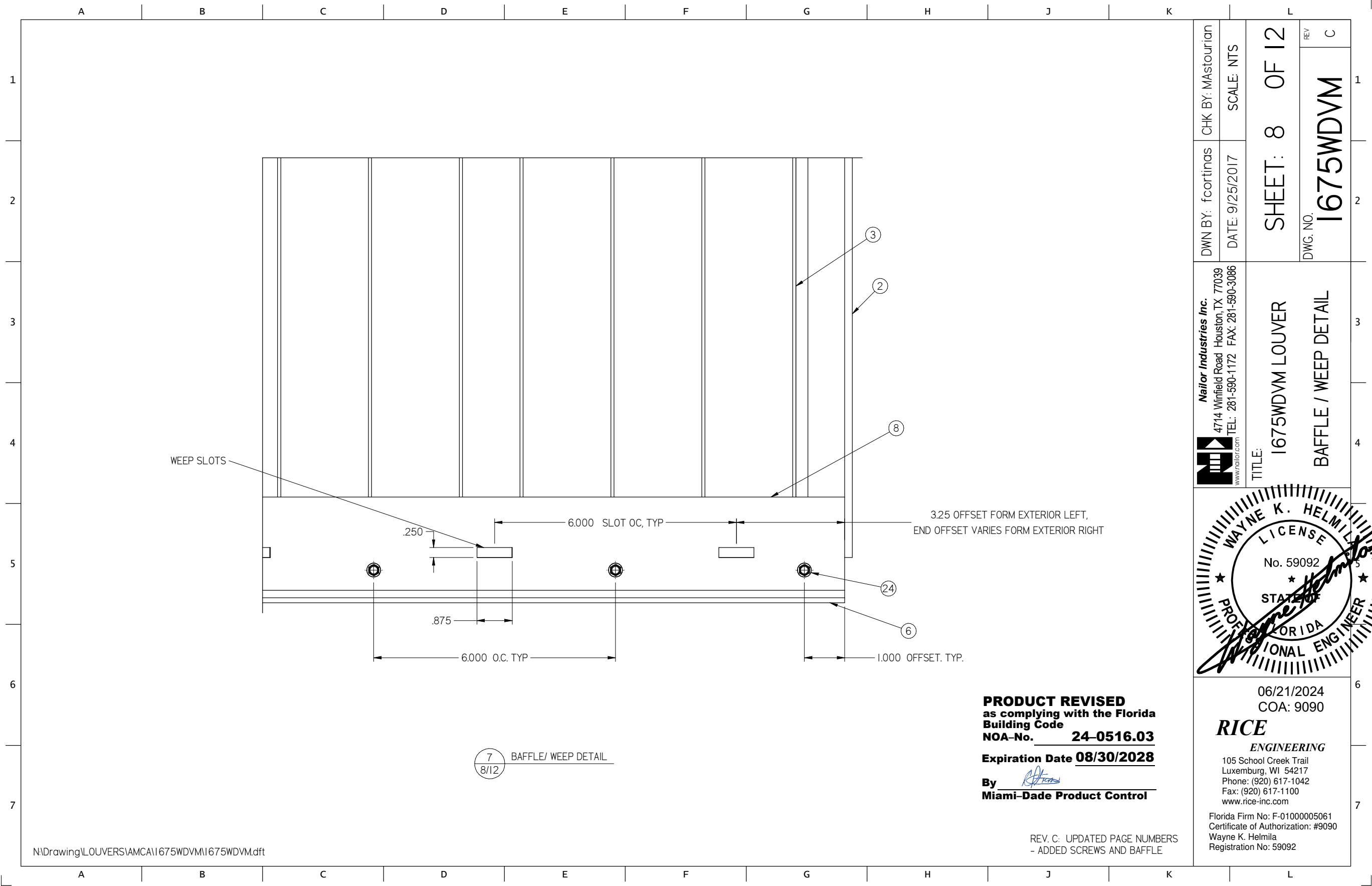
TITLE:
1675WDVM LOUVER
JAMB AND MULLION DETAIL



06/21/2024
COA: 9090
RICE
ENGINEERING
105 School Creek Trail
Luxemburg, WI 54217
Phone: (920) 617-1042
Fax: (920) 617-1100
www.rice-inc.com
Florida Firm No: F-01000005061
Certificate of Authorization: #9090
Wayne K. Helmila
Registration No: 59092

REV C: ADDED NOTE FOR ANGLE
INSTALLATION O.C.
- UPDATED PAGE NUMBER





DWN BY: fcortinas	CHK BY: Mastourian
DATE: 9/25/2017	SCALE: NTS
SHEET: 8 OF 12	
DWG. NO. 1675WDVM	REV C



Nailor Industries Inc.
4714 Winfield Road Houston, TX 77039
TEL: 281-590-1172 FAX: 281-590-3086
www.nailor.com

TITLE:

1675WDVM LOUVER

BAFFLE / WEEP DETAIL

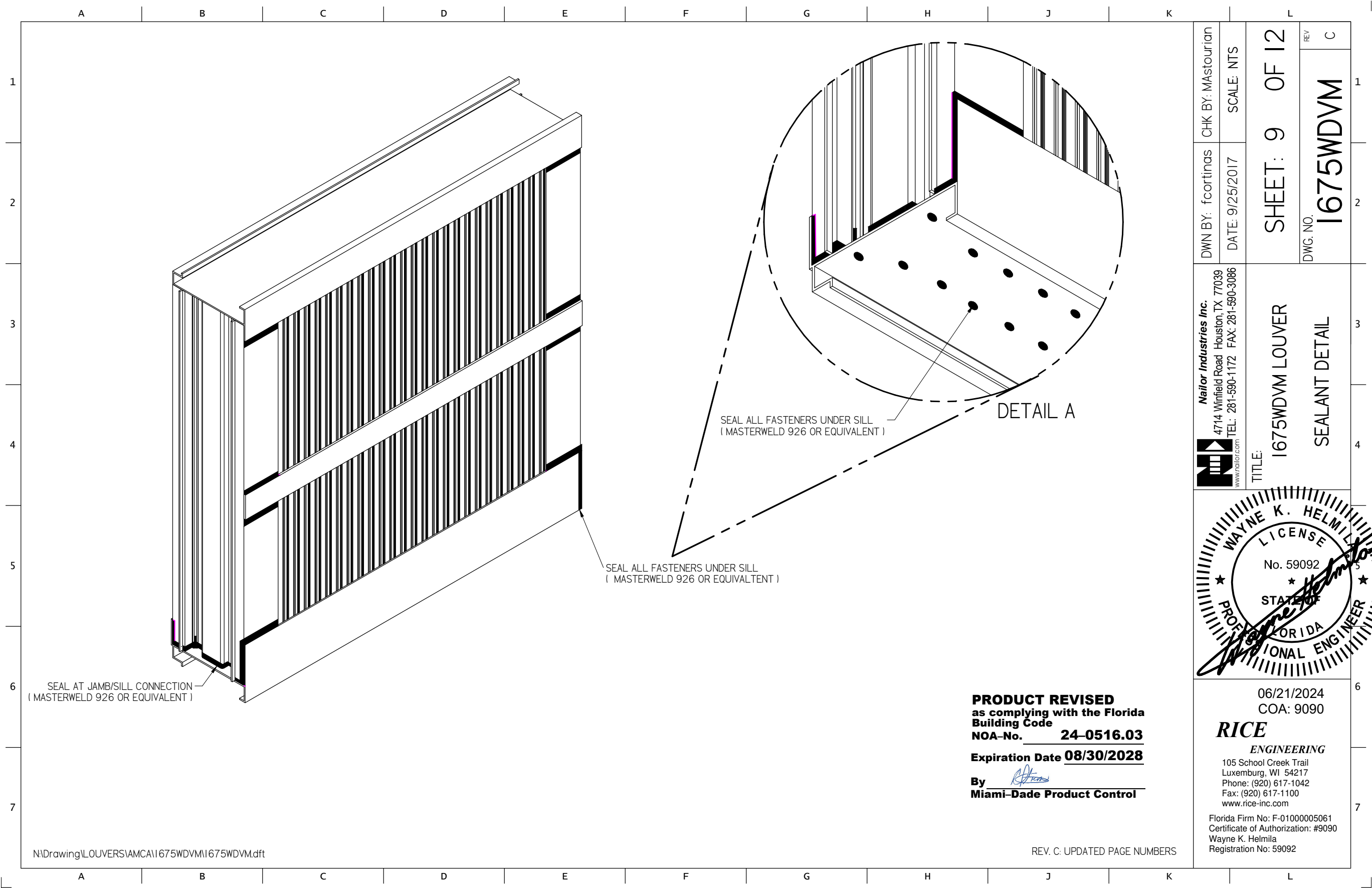


06/21/2024
COA: 9090

RICE
ENGINEERING

105 School Creek Trail
Luxemburg, WI 54217
Phone: (920) 617-1042
Fax: (920) 617-1100
www.rice-inc.com

Florida Firm No: F-01000005061
Certificate of Authorization: #9090
Wayne K. Helmila
Registration No: 59092



DWN BY: f.cortinas	CHK BY: Mastourian
DATE: 9/25/2017	SCALE: NTS
SHEET: 9 OF 12	
DWG. NO.	REV
1675WDVM	C

 4714 Winfield Road Houston, TX 77039 TEL: 281-590-1172 FAX: 281-590-3086 www.nailor.com	TITLE:	
	I675WDVM LOUVER	SEALANT DETAIL

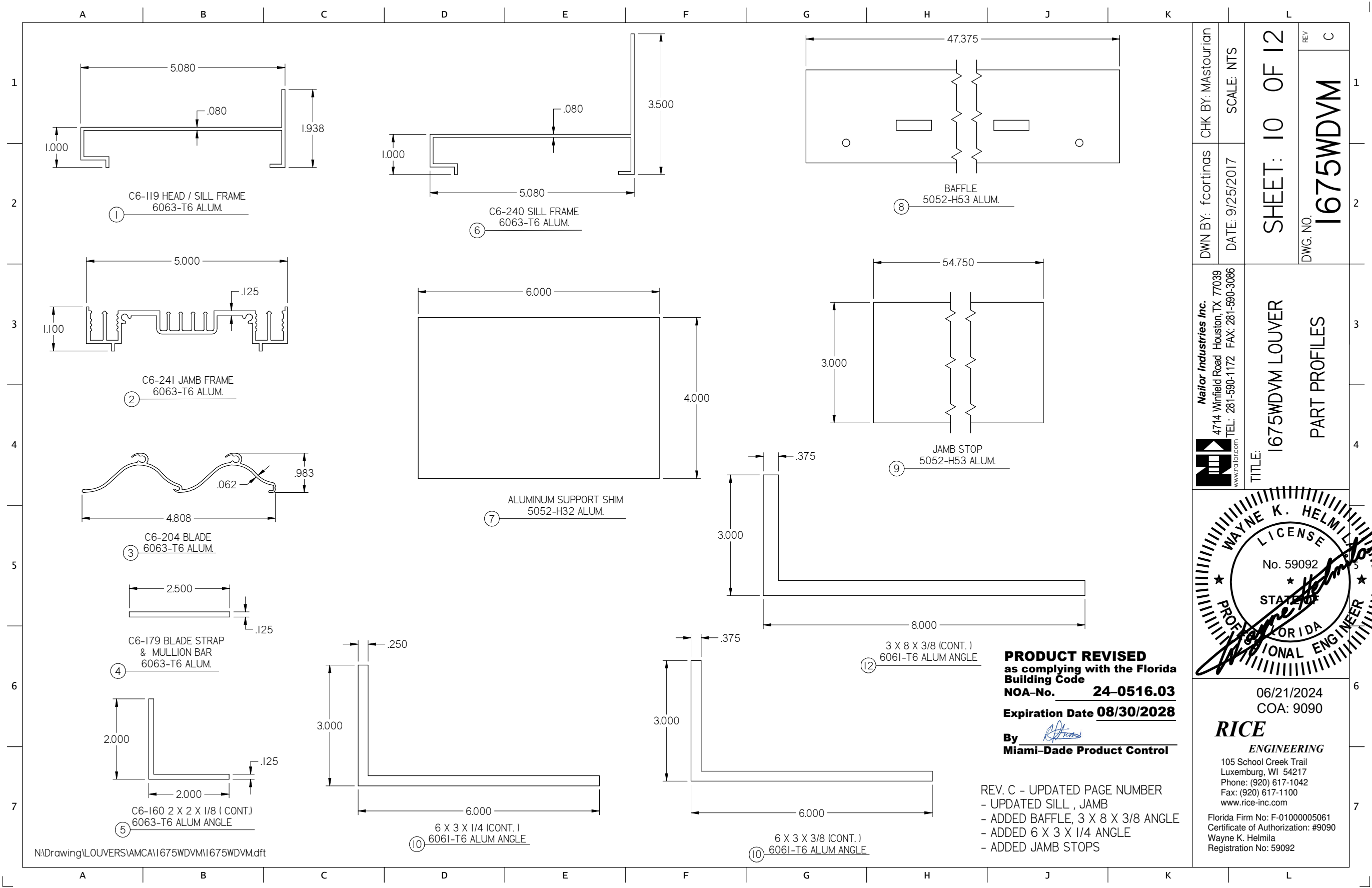


06/21/2024 COA: 9090
RICE ENGINEERING
105 School Creek Trail Luxemburg, WI 54217 Phone: (920) 617-1042 Fax: (920) 617-1100 www.rice-inc.com
Florida Firm No: F-01000005061 Certificate of Authorization: #9090 Wayne K. Helmila Registration No: 59092

PRODUCT REVISED
as complying with the Florida
Building Code
NOA-No. **24-0516.03**
Expiration Date **08/30/2028**
By 
Miami-Dade Product Control

REV. C: UPDATED PAGE NUMBERS

N:\Drawing\LOUVERS\AMCA\I675WDVM\I675WDVM.dft



DWN BY: f.cortinas	CHK BY: Mastourian
DATE: 9/25/2017	SCALE: NTS
SHEET: 10 OF 12	
DWG. NO. 1675WDVM	REV C



Nailor Industries Inc.
4714 Winfield Road Houston, TX 77039
TEL: 281-590-1172 FAX: 281-590-3086
www.nailor.com

TITLE: 1675WDVM LOUVER PART PROFILES



06/21/2024
COA: 9090

RICE
ENGINEERING

105 School Creek Trail
Luxemburg, WI 54217
Phone: (920) 617-1042
Fax: (920) 617-1100
www.rice-inc.com

Florida Firm No: F-01000005061
Certificate of Authorization: #9090
Wayne K. Helmila
Registration No: 59092

