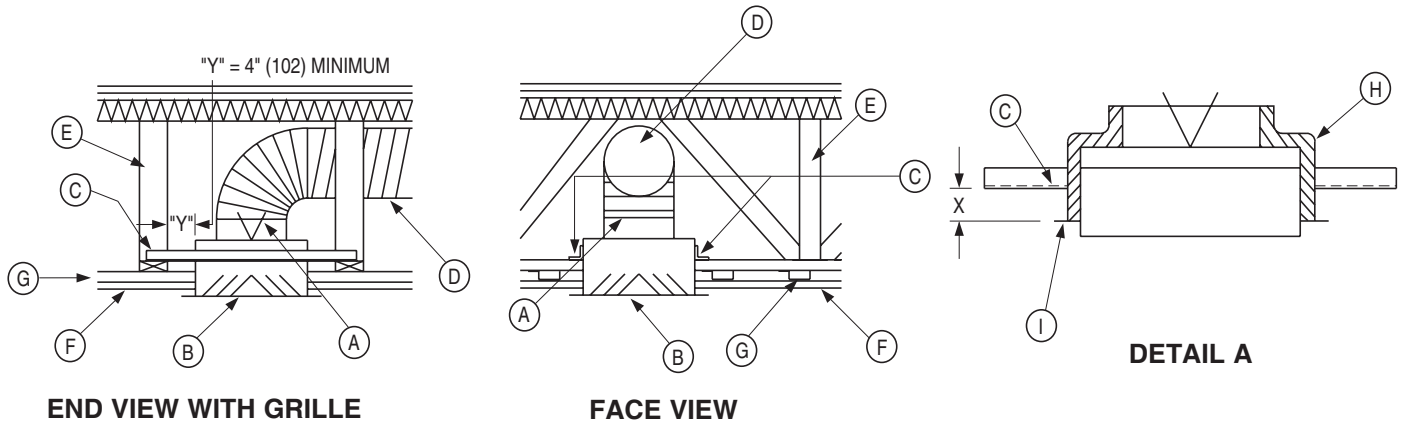


INSTALLATION INSTRUCTIONS

CEILING RADIATION DAMPER • FOR USE IN WOOD TRUSS ASSEMBLIES
 UL DESIGN NO'S L528, L546, L550, L558, L562, L574, L576, L579, L581,
 L583, L585, L592, M501, M503, M526, P531, P533, P538, P545, P547, P549,
 P552, P570, P580

MODELS: 0755 AND 0755A



- | | |
|--|---|
| <ul style="list-style-type: none"> (A) Damper Assembly (B) Steel frame Grille/Diffuser (24 gauge (0.70) min.) (C) 3/4" x 3/4" x 16 gauge (19 x 19 x 1.61) or 1 1/2" x 1 1/2" x 22 gauge (38 x 38 x 0.85) support angle (2 sides) (D) Flex Duct UL Classified Air Duct (Class 0 or 1) (E) Wood Truss (Refer to Specific UL Design No.) | <ul style="list-style-type: none"> (F) 5/8" (16) Gypsum Wallboard (Refer to Specific UL Design No.) (G) RC Channel (H) Ceramic Fiber Thermal Blanket (I) Plaster flange |
|--|---|

NOTES:

1. Before installing Model 0755, open damper blades and install fusible link between spring loaded wire clips. Do not bend or deform clips after assembly. If dampers are provided with link tabs instead of wire clips, install link and bend tabs to secure link in position.
2. Place fiber blanket over assembly as shown in "Detail A". Corners of blanket may be stapled to facilitate installation.
3. Attach 3/4" x 3/4" x 16 ga. (19 x 19 x 1.61) or 1 1/2" x 1 1/2" x 22 ga. (38 x 38 x 0.85) support angles to assembly with a minimum of two #8 screws or 3/16" (5) dia. steel pop rivets each side. Distance from bottom of angle to bottom of plaster flange (X) should be the combined thickness of the wood truss member and the RC channel, usually 1 7/8" (48).
4. Install assembly between trusses as shown in End View and attach support angles to bottom cord of truss using 1 1/4" (32) long type S steel screws or similar. Minimum clearance (Dimension "Y") between damper assembly and wood truss is 4" (102).
5. Ceiling penetrations should be located between adjacent trusses and RC channels. If required, a maximum of one RC channel may be cut or notched to enable proper damper location. The clearance between the damper assembly and the cutout in the ceiling material shall be a maximum of 1/8" (3) on any side.
6. Flex duct shall be UL Classified Air Duct Class 0 or Class 1. Fold back neck flaps of blanket and slip flexible duct over neck of damper. Replace neck flaps of blanket over duct and fasten duct to neck over blanket using steel clamp, plastic strap, or minimum 18 gauge (1.2) steel wire in accordance with duct manufacturers' installation instructions.
7. The grille/diffuser frame shall be 24 gauge (0.61) minimum steel and shall be attached with a minimum of two #8 x 1 1/4" (32) min. screws through the ceiling material and into the steel plaster flange surrounding the damper assembly.

Note: Make sure that any fasteners or the flex duct does not interfere with damper operation. Refer to UL Fire Resistance Directory Vol. I for details on UL Floor/Ceiling Design No.'s L528, L546, L550, L558, L562, L574, L576, L579, L581, L583, L585, L592, M501, M503, M526 and Roof/Ceiling Design No.'s P531, P533, P538, P545, P547, P549, P552, P570 and P580. 1 Hour Fire Rated Assemblies.

Max. Opening Size: 12" x 12" (305 x 305).

Underwriters Laboratories file #R9660 and #R1319.



Dimensions are in inches (mm).



Houston, Texas
Tel: 281-590-1172
Fax: 281-590-3086

Las Vegas, Nevada
Tel: 702-648-5400
Fax: 702-638-0400

Toronto, Canada
Tel: 416-744-3300
Fax: 416-744-3360

Calgary, Canada
Tel: 403-279-8619
Fax: 403-279-5035