

Receiving, Storage, Preparation:

Upon delivery, inspect shipping containers and contents closely. Note any damages on freight carrier's delivery receipt. Store dampers in a cool, dry and safe location in an orderly manner away from construction site, warehouse traffic, other materials, etc. Cover with plastic sheeting to protect from excessive moisture, dirt, and debris. Inspect dampers prior to installation. Dampers must be cleaned per procedures outlined in this document prior to installation if dirt, rust, or corrosion is observed.

Installation:

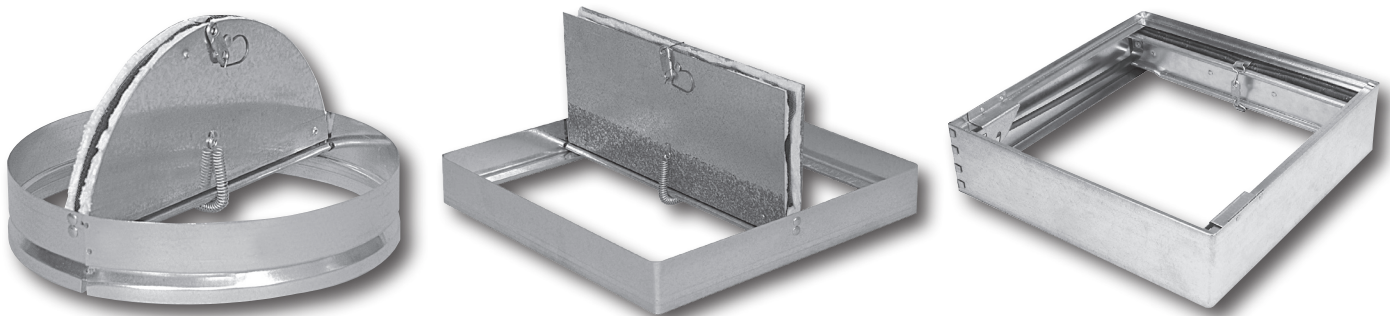
Life Safety Dampers are an essential part of the fire protection system in a building. Dampers must be installed per all applicable UL approved installation instructions. Fasteners must not interfere with the operation of the damper. Dampers must be held and supported by the frame. Holding or supporting dampers by the blades, blade hinges, or springs may result in damage. All CRD models are shipped from the factory with the blades closed. The fusible link must be installed at time of installation such that the blades are held open.

Maintenance:

Dampers do not typically require maintenance provided they are kept clean and dry. Additional lubrication is not required for all moving parts. If additional lubrication of blades is desired, use a silicone or dry graphite lubricant. Do not use petroleum-based lubricants or other lubricants that attract contaminants and collect dust. Use protective eyewear or safety glasses. Keep hands out of the blade path, as this can cause injury. Keep any hard objects or tools out of the blade path as they can damage the blades when closing.

Operations:

Remove any obstructions, dirt, rust, corrosion, or other observed conditions that could impede proper damper operation. Check closure springs (if applicable). If damaged or defective, repair or replace. Use hand tools to adjust dampers supplied with the volume control option, applying a maximum of 10 in.-lb. of torque to operate the controller. The function of the volume control option is for airflow adjustment and balancing at a grille/diffuser only, not intended for cycling the damper open and closed. Over adjustment of the volume control mechanism may cause damage to the damper assembly. When the fusible link separates the damper blades will close. Turning the volume control mechanism will no longer have an effect on the blades. If the fusible link has separated, it will need to be replaced.



Dimensions are in inches (mm).



Houston, Texas
Tel: 281-590-1172
Fax: 281-590-3086

Las Vegas, Nevada
Tel: 702-648-5400
Fax: 702-638-0400

Toronto, Canada
Tel: 416-744-3300
Fax: 416-744-3360

Calgary, Canada
Tel: 403-279-8619
Fax: 403-279-5035