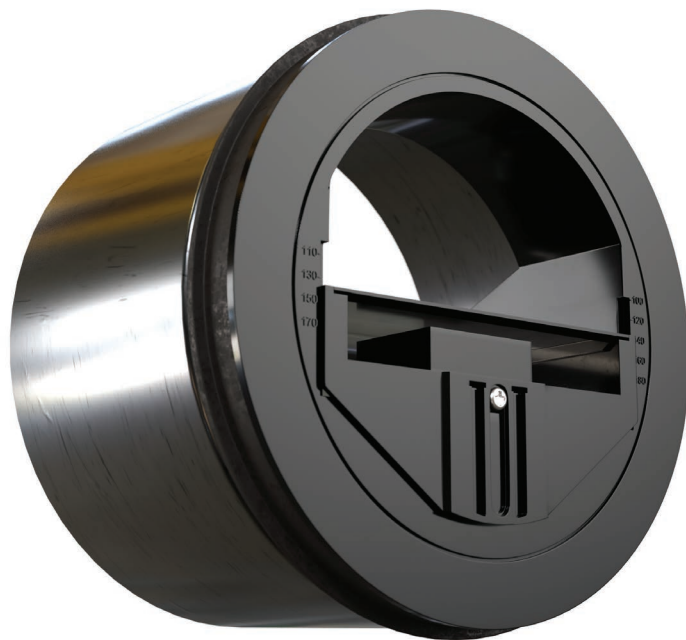


# INSTALLATION, OPERATION & MAINTENANCE

# M A N U A L

## Constant Volume Regulators Model Series: CVR



Read completely and save these instructions  
for future reference.

 **Nailor**<sup>®</sup>  
Industries Inc.

---

# TABLE OF CONTENTS

	Page No.
1. Installation	2
2. Maintenance	2
3. Adjustments	2
4. CVR-T Transition Installation	3
5. CVR-GM Grille Mount Installation	3

## CONSTANT VOLUME REGULATORS - MODEL SERIES CVR

### QUALIFICATIONS:

**UL-2043 Listing: UL File #R38307**

**UL555 Listing: UL File #R9492**

The CVD constant volume regulating damper is an extremely cost-effective way to precisely control the airflow of the HVAC systems – especially high rise buildings - without the need for on-site electric or pneumatic controls or sensors. After manual adjustment to a desired airflow range with a bit Torx T10, a self-regulating blade and spring piston adjust automatically to maintain a constant set airflow volume. These dampers are designed to be operated in pressure ranges of 0.2" w.g. to 1.0" w.g. They adjust automatically for variable duct pressures caused by building pressure, thermal stack effect, dust buildup and other variable adverse conditions.

### INSTALLATION:

1. The CVR can be installed in either a horizontal or vertical round duct. Make sure the "BAS" marking is facing down when installed in a horizontal duct.
2. The CVR is installed using the friction caused by the rubber seal around the edge. There is no need to use fasteners when installing just the CVR to boxes, duct or duct collars.
3. Install where there is access for future inspections.
4. Avoid contact between the CVR and gypsum board.
5. Install in accordance with required building and mechanical codes.
6. Make sure the CVR is installed in the correct direction for desired airflow (exhaust supply).

### MAINTENANCE:

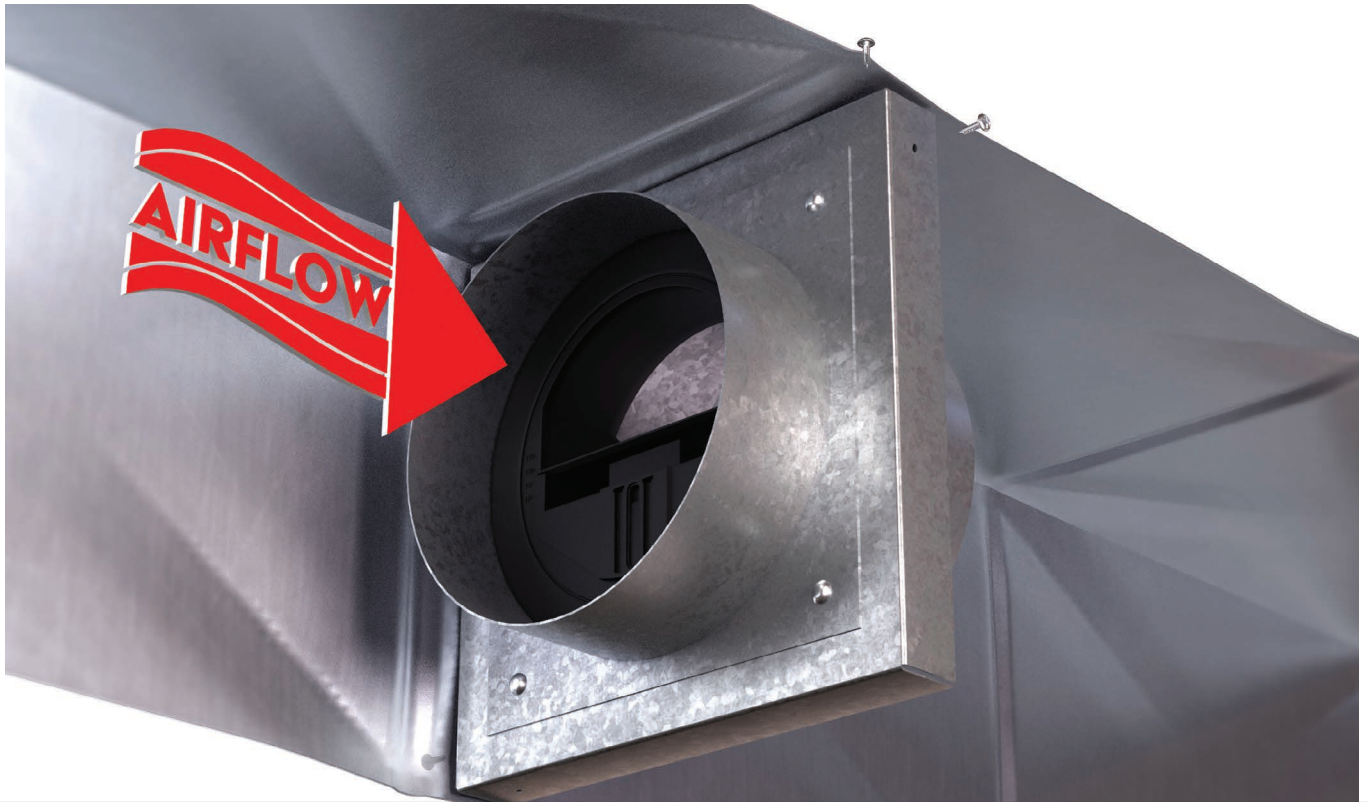
The CVR does not normally require maintenance under standard conditions. However, we recommend installing with access for cleanings and inspections to be safe.

### ADJUSTMENTS:

The CVR can be adjusted to the desired airflow range using a bit Torx T10. Simply unscrew the set screw and move it up (to decrease airflow) or down (to increase airflow), then re-screw set screw into place.

### **CVR-T TRANSITION INSTALLATION:**

The CVR-T is designed for installation in a square duct. With the use of a square-to-round transition collar, the CVR-T can be placed in any square duct or plenum box. Sheet metal screws are used to hold the CVR-T in place.



### **CVR-GM GRILLE MOUNT INSTALLATION:**

The CVR-GM is designed with a flanged box for a grille (factory supplied or by others). Factory supplied grilles are shipped loose. Use screws to secure the grille onto the grille mount box. Connect the either steel collar of the CVR, or the factory installed round collar transition into the round duct using screws.



---

## **CVR-FD FIRE DAMPER INSTALLATION:**

Note: For CVR-FD installation; please refer to IOM-CVR-FD.



**Houston, Texas**  
Tel: 281-590-1172  
Fax: 281-590-3086

**Las Vegas, Nevada**  
Tel: 702-648-5400  
Fax: 702-638-0400

**Toronto, Canada**  
Tel: 416-744-3300  
Fax: 416-744-3360

**Calgary, Canada**  
Tel: 403-279-8619  
Fax: 403-279-5035