

Figure 1: Mounting orientation of smoke detector on dampers with a height greater than or equal to 20" (508).

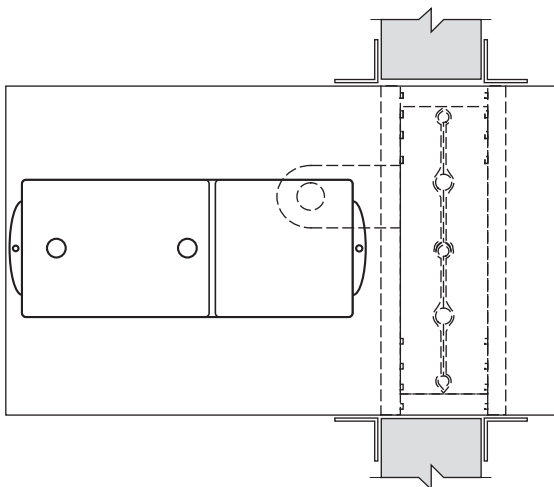


Figure 2: Mounting orientation of smoke detector on dampers with a height less than 20" (508).

UL CLASSIFIED (see complete marking on product)
***UL CLASSIFIED to Canadian safety standards**
(see complete marking on product)*
Standard 555 (Listing R9492)
Standard 555S (Listing R9492)

Smoke detector requires 100 fpm minimum air velocity in duct. For damper activation requirements when system velocity is less than 100 fpm, the local authority having jurisdiction should be consulted.

Refer to smoke detector manufacturer and Nailor's installation instruction supplement for dampers with factory mounted smoke detectors.

Label 1: Label applied to dampers with factory mounted smoke detectors.

NOTES:

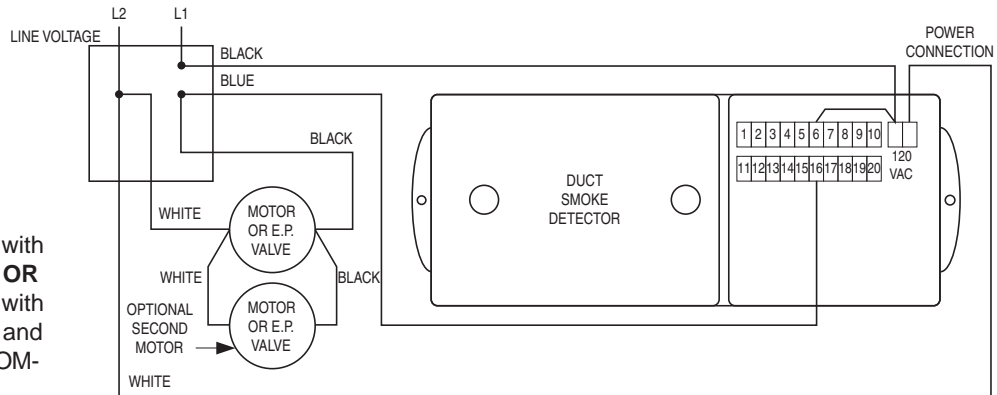
1. Minimum airflow rating for the smoke detector is 100 fpm. Maximum is 4000 fpm.
2. For further information, refer to System Sensor Model D4120 Installation and Maintenance Instructions.
3. Since the smoke detector is not rated for use at velocities below 100 fpm, local code may require an alternate means of damper closure such as zone detection or automated damper closure when the system fan is shut down.
 The local authority having jurisdiction should be consulted prior to the installation of the damper and smoke detector.
4. Correct orientation of holes on detector sampling tube is facing airstream.
5. See following pages for wiring diagrams.
6. Perform all maintenance and field tests recommended or required in System Sensor Model D4120 Installation and Maintenance Instructions.

WARNING: Duct smoke detectors have specific limitations. DUCT DETECTORS ARE:
NOT a substitute for an open area smoke detector,
NOT a substitute for early warning detection, and
NOT a replacement for a building's regular fire detection system.

Refer to NFPA 72 and 90A for additional duct smoke detector application information.

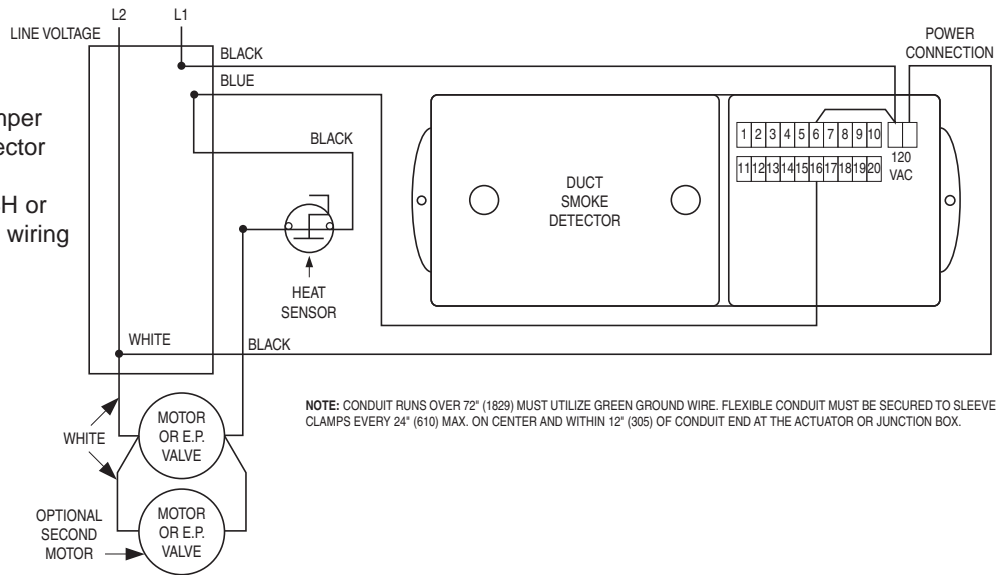
120 VAC DSD-LF WIRING SCHEMATICS

Figure 3: Smoke damper with smoke detector **OR** Smoke damper with smoke detector and MLS-300 (see IOM-MLS3H or IOM-MLS3N for wiring detail).



NOTE: CONDUIT RUNS OVER 72" (1829) MUST UTILIZE GREEN GROUND WIRE. FLEXIBLE CONDUIT MUST BE SECURED TO SLEEVE WITH CLAMPS EVERY 24" (610) MAX. ON CENTER AND WITHIN 12" (305) OF CONDUIT END AT THE ACTUATOR OR JUNCTION BOX.

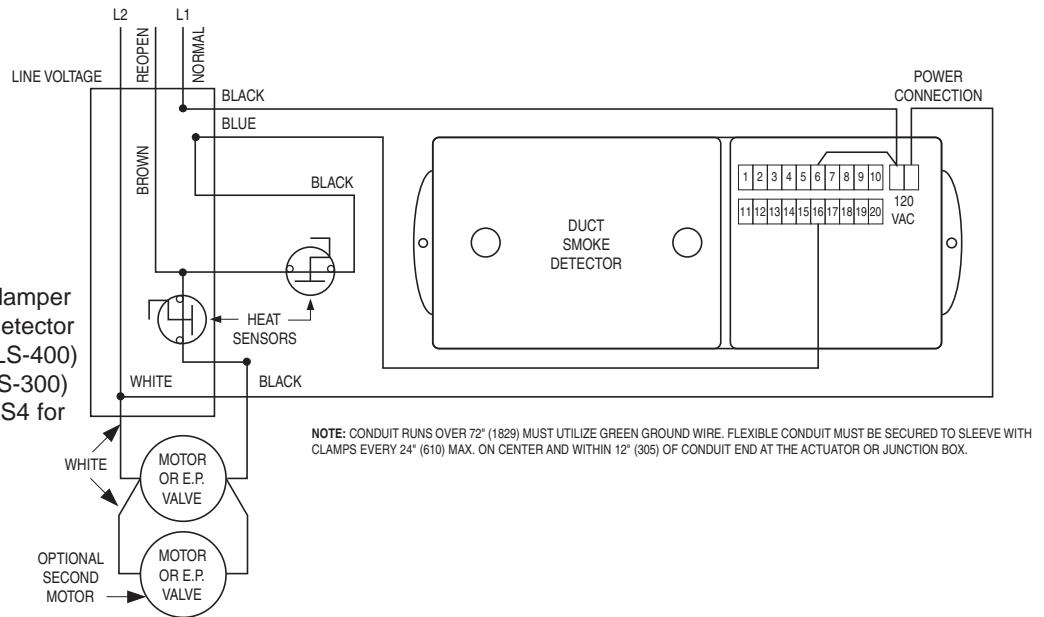
Figure 4: Combination Fire/Smoke damper with smoke detector and MLS-300 (see IOM-MLS3H or IOM-MLS3N for wiring detail).



NOTE: CONDUIT RUNS OVER 72" (1829) MUST UTILIZE GREEN GROUND WIRE. FLEXIBLE CONDUIT MUST BE SECURED TO SLEEVE WITH CLAMPS EVERY 24" (610) MAX. ON CENTER AND WITHIN 12" (305) OF CONDUIT END AT THE ACTUATOR OR JUNCTION BOX.

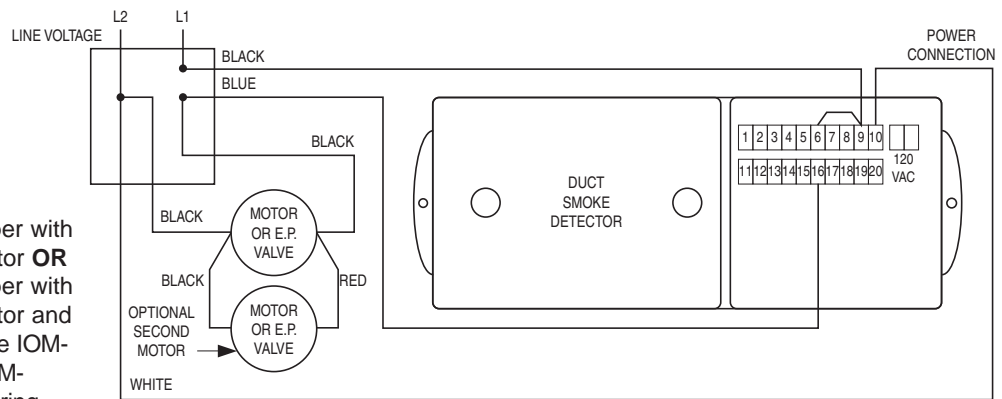
120 VAC DSD-LF WIRING SCHEMATICS (continued)

Figure 5: Combination Fire/Smoke damper with smoke detector and DTO (MLS-400) (includes MLS-300) (see IOM-MLS4 for wiring detail).



24 VAC DSD-LF WIRING SCHEMATICS

Figure 6: Smoke damper with smoke detector **OR** Smoke damper with smoke detector and MLS-300 (see IOM-MLS3H or IOM-MLS3N for wiring detail).



24 VAC DSD-LF WIRING SCHEMATICS (continued)

Figure 7: Combination Fire/Smoke damper with smoke detector and MLS-300 (see IOM-MLS3H or IOM-MLS3N for wiring detail).

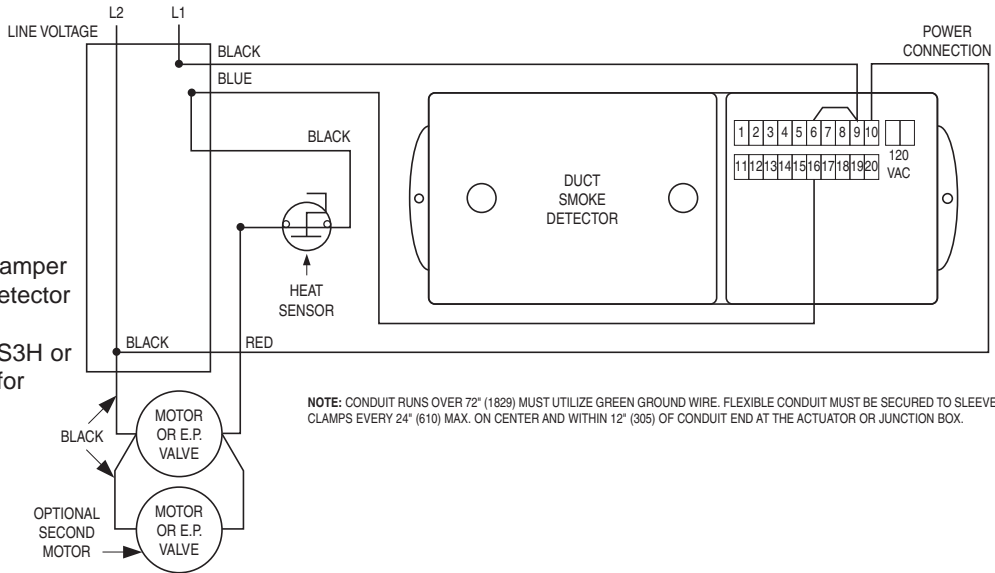


Figure 8: Combination Fire/Smoke damper with smoke detector and DTO (MLS-400) (includes MLS-300) (see IOM-MLS4 for wiring detail).

