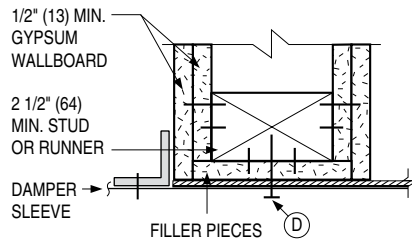
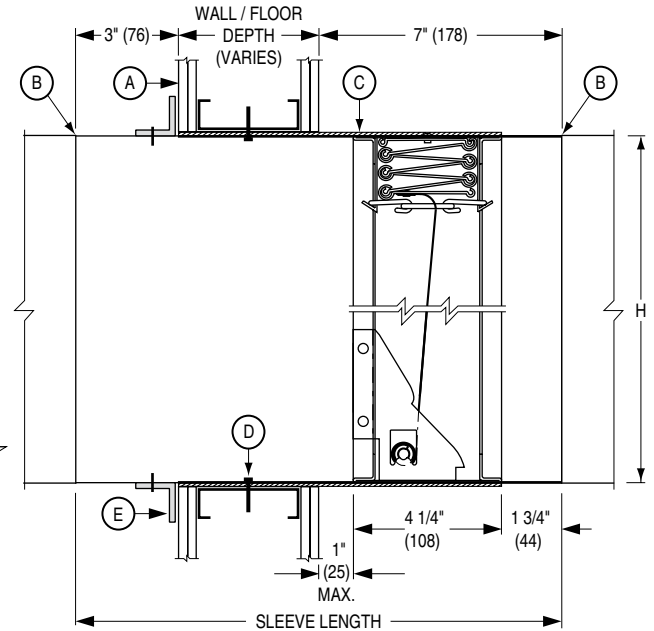


**QUALIFICATIONS:**

- Meets all the requirements of UL 555 and CAN/ULC-S112.
- Meets the requirements for NFPA 80, 90A and 101 as well as IBC and NBC (Canada) building codes.
- California State Fire Marshal Listing No. 3225-0935:0113/0100.
- Vertical or Horizontal installation.



**F: Wood Stud Detail**



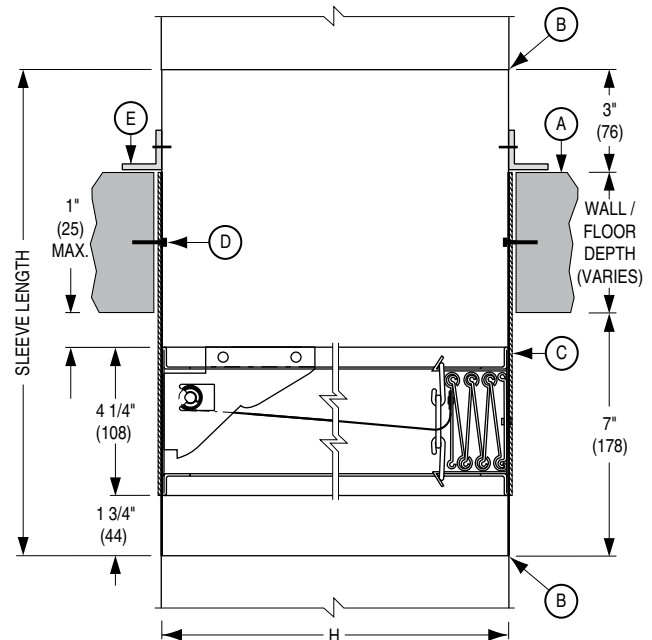
**VERTICAL MOUNT**

**ITEMS:**

- A. Typical 2 hour rated vertical steel stud or masonry construction or horizontal concrete fire partition.
- B. Duct connection (see Note 2).
- C. Intumescent thermal insulation.
- D. Fasteners (see note 4):
  - a. In metal stud/drywall walls and partitions and cavity shaft wall partitions, use #10 sheet metal screws.
  - b. In masonry wall or floor/ceiling construction, use #10 self-tapping concrete anchors.
  - c. In Wood Stud, use minimum #10 steel screws.
- E. Single sided retaining angles.
- F. Typical 2 Hour Rated Vertical Wood Stud Construction.

**APPLICATION:**

(D)0110DOW are "out of wall" or floor integral sleeve curtain type fire dampers, specifically designed for through penetrations (ductwork connected to both sides). This model is particularly suited for use in common steel stud drywall partition designs, as narrow as 3 1/2" (89) where a traditional "within the plane of the wall" fire damper installation is not possible.



**HORIZONTAL MOUNT**

**NOTES:**

**IMPORTANT: DAMPER IS FURNISHED FULL-SIZE (See Note 3)**

1. Installation shall be in accordance with the appropriate requirements of the National Fire Protection Association Standard NFPA 90A latest edition.
2. **Damper Sleeve:** These dampers are supplied with a factory furnished sleeve which shall not be less than 16 gauge (1.16) coated steel. Sleeve thickness must be equal to or thicker than the duct connected to it. Sleeve may be attached to the duct with cleats, screws or other types of mechanical fasteners. The maximum sleeve thickness for such rigid joints is 10 gauge (3.51) for coated steel.
3. **Expansion Clearance and Opening Preparation.** To accommodate the damper sleeve thickness and insulation, frame and finish the opening so that it is 1/2" (13) larger in width and height than the duct size. Dampers are furnished with an inside sleeve dimension full ordered size to facilitate grille installation.

4. **Fasteners and Retaining Angles.** For installation in a masonry wall or floor/ceiling and metal stud drywall partitions, single side retaining angles are required. Retaining angle shall be a minimum of 1 1/2" x 1 1/2" x 16 gauge (38 x 38 x 1.61). Secure the retaining angle to the sleeve with 1/2" (12.7) long welds, 1/4" (6.35) dia. bolts and nuts, 3/16" (4.76) steel rivets or #8 sheet metal screws 8" (203) on center and 2" (51) maximum from corner of sleeve on all sides. The retaining angle must lap the structural opening by 1" (25.4) minimum. Insert damper/sleeve combination into opening so that the damper is 1" (25.4) max. outside the plane of the wall/floor. Secure the damper in the wall opening from inside the sleeve as shown above by use of the following:

- a. In metal stud/drywall walls, partitions and cavity shaft wall partitions, use minimum #10 sheet metal screws.
- b. In masonry walls or floor/ceilings use minimum #10 self-tapping concrete wall anchors. Anchors must penetrate wall or floor a minimum of 1 1/2" (38).
- c. In wood stud, use minimum #10 steel screws, 2 1/2" (64) long with minimum 1 1/2" (38) penetration into framing.

Fasteners shall be spaced a maximum of 6" (152) on center and 2" (51) maximum from corners, a minimum of two per side is required.

Alternatively, a second set of retaining angles on the opposite side may be used in lieu of fastening from inside the sleeve to the wall/stud. The second set of angles are installed as for the first set.

5. **Maximum Size Limitations:**

Model	System	Mounting	Single Section	Multiple Section
0110DOW	Static	Vertical or Horizontal	36" x 24" (914 x 610)	—
D0110DOW	Dynamic	Vertical	24" x 24" (610 x 610)	36" x 24" (914 x 610)*
		Horizontal	24" x 24" (610 x 610)	—

\* Maximum individual sections not to exceed 18" x 24" (457 x 610)

**IMPORTANT**

DO NOT CAST DAMPER IN PLACE.

DO NOT INSTALL DAMPER OUT OF SQUARE OR OUT OF FLAT.

**REFER TO THE APPROPRIATE NAILOR INSTALLATION INSTRUCTION SUPPLEMENTS FOR ADDITIONAL INFORMATION OR SPECIAL REQUIREMENTS:**

STEEL AND WOOD STUD FRAMING	FDSWSFINST
CAVITY SHAFT WALL PARTITIONS	FDCSWINST
FLANGED TYPE ALTERNATIVE BREAKAWAY CONNECTIONS	FDFABC
QUICK-SET RETAINING ANGLES	FDQSRA



Houston, Texas  
Tel: 281-590-1172  
Fax: 281-590-3086

Las Vegas, Nevada  
Tel: 702-648-5400  
Fax: 702-638-0400

Toronto, Canada  
Tel: 416-744-3300  
Fax: 416-744-3360

Calgary, Canada  
Tel: 403-279-8619  
Fax: 403-279-5035