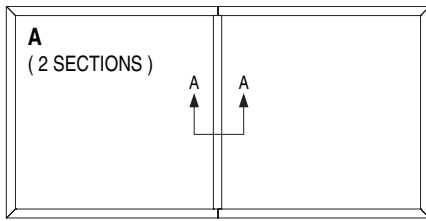
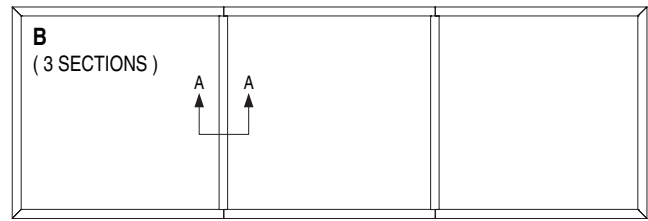




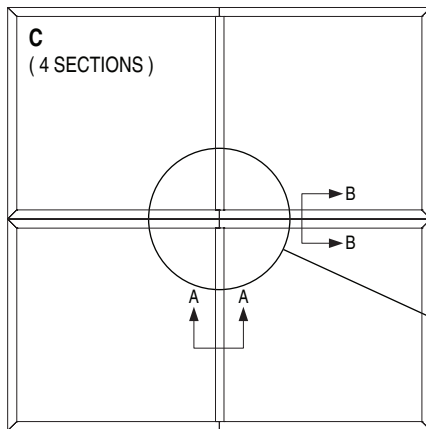
OVERSIZED GRILLE CONSTRUCTION
ALUMINUM SUPPLY AND RETURN GRILLES
FOR DUCTS OR OPENINGS LARGER THAN 48" (1219)
MODEL SERIES: 5100 AND 7100



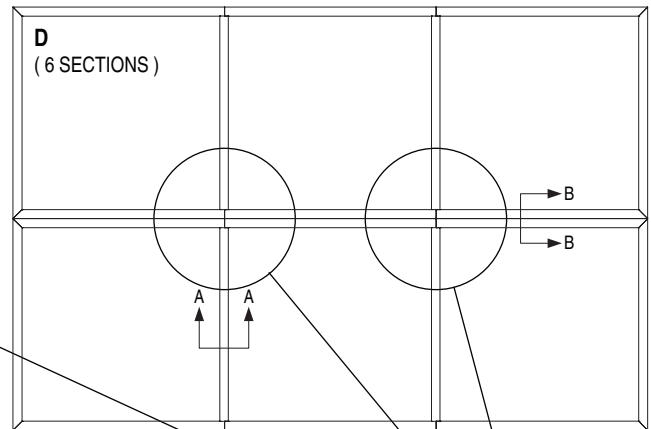
OVER 48" (1219) IN WIDTH UP TO 96" x 48" (2438 x 1219)



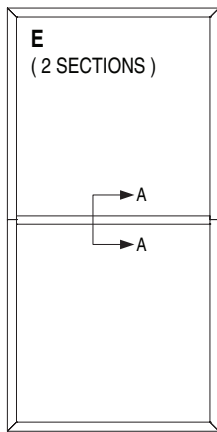
OVER 96" (2438) IN WIDTH UP TO 144" x 48" (3658 x 1219)



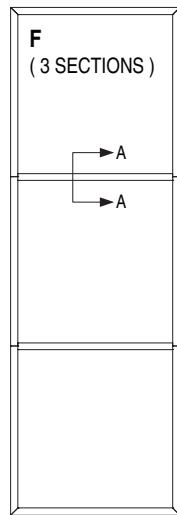
OVER 48" (1219) IN WIDTH AND HEIGHT UP TO 96" x 96" (2438 x 2438)



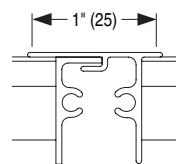
OVER 96" x 48" (2438 x 1219) UP TO 144" x 96" (3658 x 2438)



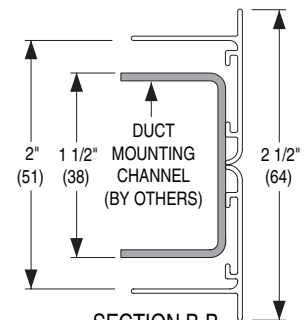
UP TO 48" (1219) IN WIDTH AND UP TO 96" (2438) IN HEIGHT



UP TO 48" (1219) IN WIDTH AND UP TO 144" (3658) IN HEIGHT



SECTION A-A
FACE MULLION WITH ALIGNMENT TAB OVERLAP DETAIL



SECTION B-B
DOUBLE FRAME / BORDER DETAIL

NOTES:

- Maximum single section size is 48" x 48" (1219 x 1219).
- Detail A-A frame joints are sheared and butted together. Alignment tabs interlock and keep the face surfaces parallel.
- Detail B-B shows two separate grille frames butted together.
- Mounting countersunk screw holes are located per the standard screw hole chart on grille frames, but not on face mullion.
- Sections ship loose for field installation.
- Additional structural support (Duct mounting support channels by others) is required for diagrams C and D.
- This detail applies to Type S Surface Mount Frame/Border only.

SCHEDULE TYPE:				
PROJECT:				
ENGINEER:	DATE	B SERIES	SUPERSEDES	DRAWING NO.
CONTRACTOR:	4 - 27 - 20	GR	NEW	OG-1-A

Dimensions are in inches (mm)