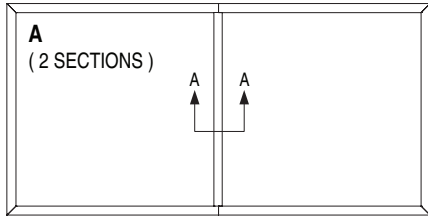
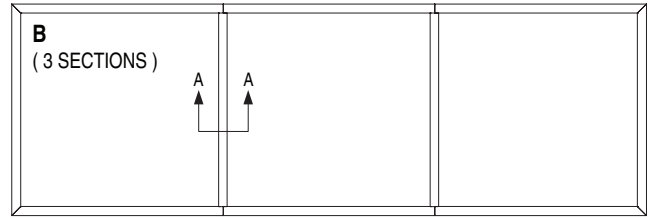




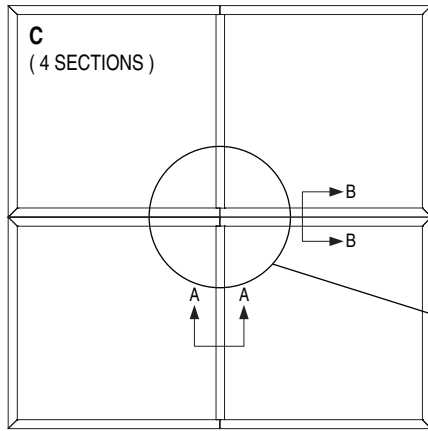
**OVERSIZED GRILLE CONSTRUCTION
STEEL HEAVY DUTY RETURN GRILLES
FOR DUCTS OR OPENINGS LARGER THAN 48" (1219)
MODEL: 6100-HD**



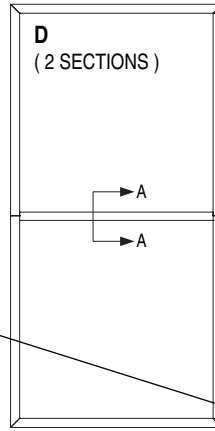
OVER 48" (1219) IN WIDTH UP TO 96" x 48" (2438 x 1219)



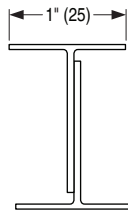
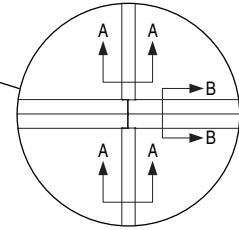
OVER 96" (2438) IN WIDTH UP TO 144" x 48" (3658 x 1219)



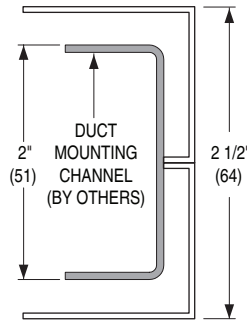
OVER 48" (1219) IN WIDTH AND
HEIGHT UP TO 96" x 96" (2438 x 2438)



UP TO 48" (1219) IN WIDTH AND
UP TO 96" (2438) IN HEIGHT



SECTION A-A
FACE MULLION WITH
ALIGNMENT TAB
OVERLAP DETAIL



SECTION B-B
DOUBLE FRAME / BORDER DETAIL

NOTES:

- Maximum single section size is 48" x 48" (1219 x 1219).
- Detail A-A frame joints are sheared and butted together. Alignment tabs interlock and keep the face surfaces parallel.
- Detail B-B shows two separate grille frames butted together.
- Mounting countersunk screw holes are located per the standard screw hole chart on grille frames, but not on face mullion.
- Sections ship loose for field installation.
- Additional structural support (Duct mounting support channels by others) is required for diagram C.
- This detail applies to Type S Surface Mount Frame/Border only.

SCHEDULE TYPE:		Dimensions are in inches (mm)			
PROJECT:					
ENGINEER:	DATE	B SERIES	SUPERSEDES	DRAWING NO.	
CONTRACTOR:	11 - 24 - 20	GR	NEW	OG-6100HD	