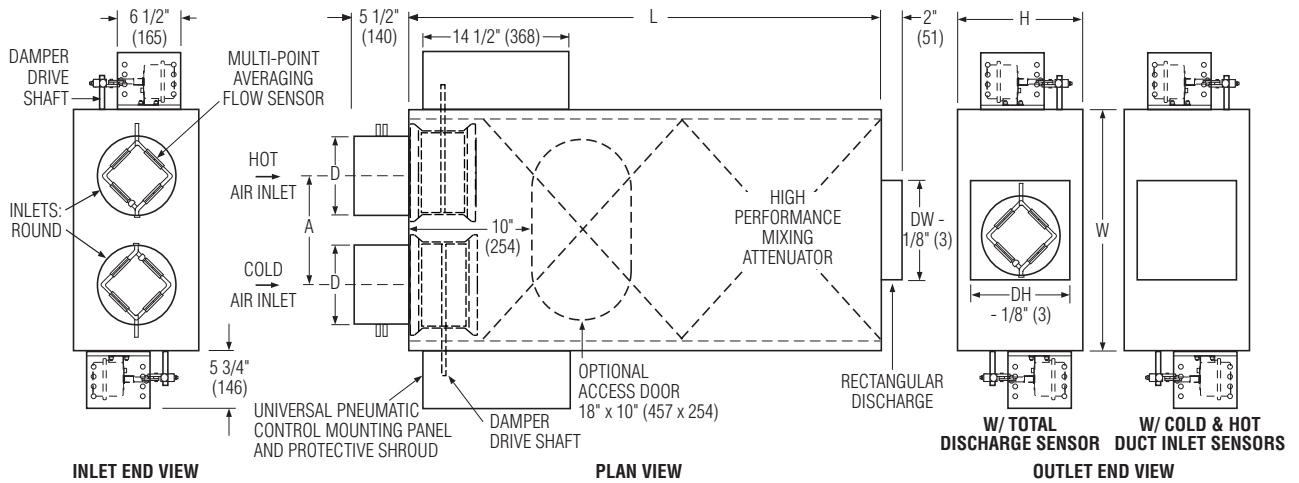




**DUAL DUCT TERMINAL UNIT
WITH HIGH EFFICIENCY MIXING ATTENUATOR
PNEUMATIC CONTROL • PRESSURE INDEPENDENT
MODEL: P3240 "BLENDMASTER™"**



Dimensional Data

Unit Size	Airflow Range cfm (l/s)	W	H	L	A	Inlet Dia. D	Outlet DW x DH
4	0 – 180 (0 – 85)	24 (610)	10 (254)	47 (1194)	11 (279)	3 7/8 (98)	8 x 8 (203 x 203)
5	0 – 325 (0 – 153)	24 (610)	10 (254)	47 (1194)	11 (279)	4 7/8 (124)	
6	0 – 450 (0 – 212)	24 (610)	10 (254)	47 (1194)	11 (279)	5 7/8 (149)	
7	0 – 650 (0 – 307)	24 (610)	12 1/2 (318)	47 (1194)	11 (279)	6 7/8 (175)	10 x 10 (254 x 254)
8	0 – 900 (0 – 425)	24 (610)	12 1/2 (318)	47 (1194)	11 (279)	7 7/8 (200)	
9	0 – 1150 (0 – 543)	34 (864)	14 (356)	60 (1524)	16 1/8 (410)	8 7/8 (225)	14 x 12 (356 x 305)
10	0 – 1500 (0 – 708)	34 (864)	14 (356)	60 (1524)	16 1/8 (410)	9 7/8 (251)	
12	0 – 2050 (0 – 967)	34 (864)	16 (406)	60 (1524)	16 1/8 (410)	11 7/8 (302)	18 x 14 (457 x 356)
14	0 – 2750 (0 – 1298)	42 (1067)	18 (457)	72 (1829)	20 1/8 (511)	13 7/8 (353)	



Standard Features:

- 22 ga. (0.86) zinc coated steel casing, mechanically sealed, low leakage construction.
- Low leakage opposed blade dampers with blade and jamb seals (single blade on size 4, 5, 6). 90° rotation, CW to close. Damper leakage is less than 1% of the terminal rated airflow at 6" w.g. (1.5 kPa).
- 1/2" (13) dia. plated steel drive shaft. An indicator mark on the end of the shaft shows damper position.
- Integral mixing attenuator with baffles. 1:30 minimum mixing efficiency.
- Rectangular discharge.
- Universal control mounting panel with double wall stand-off construction.
- 3/4" (19), dual density insulation, exposed edges coated to prevent air erosion. Meets the requirements of NFPA 90A and UL 181.

- Two multi-point averaging Diamond Flow Sensors. Aluminum construction. Supplied with balancing tees. Location must be specified based upon control sequence. Choice of location:
 - Cold and hot duct inlet.
 - Hot duct inlet and downstream total discharge.
 - Cold duct inlet and downstream total discharge (Nailor standard).
- Choice of right or left-hand cold duct location. Unit is flippable. Hand of unit is determined by location of cold duct looking in direction of airflow. Right-hand unit illustrated.
- Unequal inlet sizes are available. Casing is governed by the larger inlet size.

Controls:

- By Nailor.
- By others.

Options and Accessories:

- Steri-liner.
 - Fiber-free liner.
 - Solid metal liner.
 - 1" (25) liner.
 - Perforated metal liner.
 - Bottom access door (Model 0800-M1).
 - Hanger brackets.
 - Factory wrapped inlets and outlet.
 - Protective controls shroud cover.
 - Removable flow sensors.
- Seismic Certification:
- SSI (Standard)
 - OSHPD
 - Special Features: _____

SCHEDULE TYPE:	
PROJECT:	
ENGINEER:	
CONTRACTOR:	

Page 1 of 1.
Dimensions are in inches (mm).

DATE	B SERIES	SUPERSEDES	DRAWING NO.
3 - 9 - 18	3200	3 - 8 - 17	P3240